



PARADISE
FALLS

LUTHERAN
ASSOCIATION

75TH ANNIVERSARY
1922-1997

Contents

Dedication/Credits Anniversary Committee.....	1
A Look Ahead Message From the President	2
A Look Back.....	3
Sameness & Change Deeper Meaning of Paradise.....	4
Administration of P.F. Women's Auxiliary	5
Photos Personal Memories	6-8
Cottage Pictures.....	9-62
A Tribute to Paradise Falls	63
Index	64

Credits

Editor Brenda Lange
Photography & Design ... Fred Shultz
Research Catharine Shultz
Additional photos provided by Diane Snear

75th Anniversary Committee:

Anna Mary Ammon, Maxine Christ, Irene Danga, Shirley Dierolf, Ruth Ditmars, Wilma Kuhnle, Brenda Lange, Ruth Larison, Dorothy Miller, Sonia Naus, Evelyn Neilssen, Bob Neilssen, Carolyn Pohl, Elton P. Richards, Arthur Segraves, Fred Shultz, Barbara Snear, Diane Ardell Snear, chairman, Ginny Warburton

Printing donated in part by Intelligencer Printing Co., Lancaster, PA



Dedication

Anyone who has experienced the beauty and serenity of Paradise Falls knows the name is truly an apt reflection of its nature. The 75 years of its existence have been blessed by God. Although we've seen changes, still Paradise remains a tranquil oasis.

We dedicate this book in honor of our Christian community with a prayer of thanks for all who have gone before; to all who currently enjoy the blessings of this Paradise; and to all who will come after us.

Brenda Lange, Fred Shultz

Message from the President

Paradise is the garden in which we were placed by God the Creator.
Paradise is a secluded place set apart for rest and renewal.
Paradise is a place lost to us but we have the promise of its restoration in the Kingdom of God.

Our place, Paradise Falls Lutheran Association, is in part described by each of the images of Paradise. It is our good fortune to celebrate a past as we enjoy a present and look forward to a greater future. "Thy Kingdom Come."

The trust you give your board is that we work together to hold and preserve but also to grow and change. The mere sense of time fails as a guide unless we see these images of Paradise as God's promise and our hope for the future. There is a presence and promise of God.

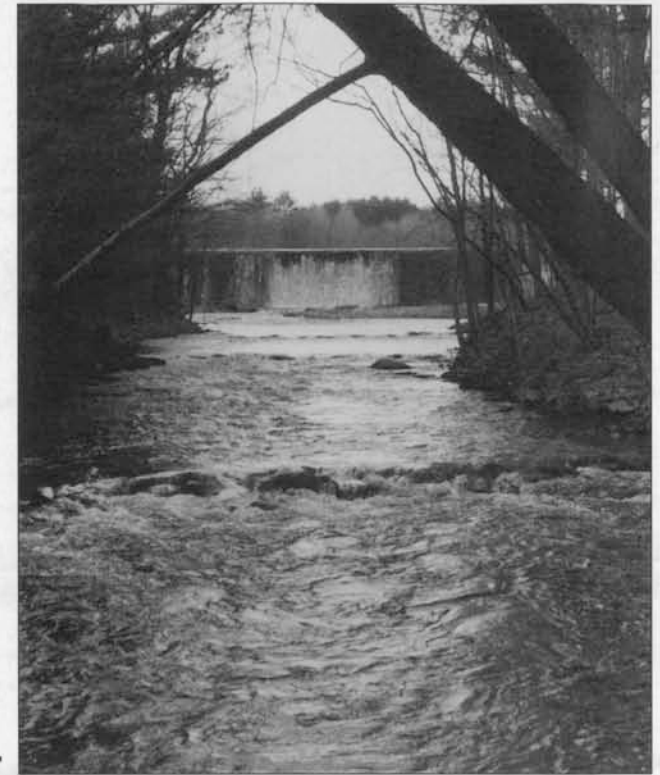
Rev. LeRoy Ness
President 1994 - 97

Looking to the future

Look ahead! That vibrant command propels us to action. Over the years, the Long Range Planning Committee has struggled to maintain a forward vision. Board meeting minutes will reveal that many key issues have come under close scrutiny over the years. Topics that were subjected to much research and philosophical debate included Social Hall's future, our road system, community water versus cottage wells, border and internal security, general insurability, financing ideas for members to market their cottages, coping with silt build-up in Lake Crawford, fostering a sense of community through our Lutheran values, maintaining the PF traditions and rustic appearance many have grown to cherish, and recently the quarry expansion issue.

Frequently, the committee found itself caught between providing facts upon which the Board could examine and possibly take action, and actually considering that its recommendations were a foregone conclusion to being policy. The cascading effect of this has resulted in a see-saw performance by the LRPC. Through no fault of its own, it has, over the years, been directed to accomplish one of society's most daunting tasks ... plan for the future and hope the implementation turns out to be appropriate for the next generation.

Fortunately for the Association, many members have come forward to serve on this committee, and the future looks bright as many keen, thoughtful, creative, loving minds plan for the coming years at PFLA.



A look back

Paradise Falls Lutheran Association began as a loose grouping of several tracts of land named Abend Ruhe Farm by its owner, A. Raymond Raff of Philadelphia. A Lutheran in poor health when he first came to the Poconos, Mr. Raff was healed by the invigorating atmosphere of the Paradise Valley. He decided to offer his farm for the establishment of a Lutheran resort in gratitude to God for restoring his health.

The Paradise Valley Lutheran Association was subsequently formed in October 1922 by a group of Lutherans from New York and Pennsylvania. Four additional tracts were purchased, bringing the association's holdings to 300 acres along the Henryville State Highway, bisected by the Cranberry Creek.

In 1925, additional land, including more than a half mile of Paradise Creek and the renowned Paradise Falls, was purchased; the name of the association was changed to the Paradise Falls Lutheran Association; and it was incorporated under Pennsylvania law. A barn on the grounds was remodeled into a community house for association members to use while their cottages were being constructed. It was named Nestledown. During that first summer, about 35 guests utilized its rustic accommodations. Most meals were served in the adjoining farmhouse.

The first decades were ambitious years devoted to organization and construction of cottages, water lines, roads, and bridges. Within the first several years a great deal of cleaning up, repairing, and remodeling went on at P.F. Indoor plumbing and electricity were installed, two tennis courts were constructed, and a picnic pavilion was built at the Falls. Fishermen soon discovered the abundant waters of the Paradise Creek and hikers enjoyed the many paths and wooded trails.

Some dreams, including the hotel on the hill and golf course were abandoned. But through devotion and hard work, other dreams were realized. A girls' camp was built in the woods above the Falls, and functioned for about twenty years, leaving scores of girls with fond memories of summers in the woods. A store was built that operated into the mid-1960s and offered a variety of Pocono Mountains souvenirs for sale as well as bread and milk. A dam was completed across Paradise Creek that provided cottagers with a natural swimming pool, named Lake Crawford after Alfred Crawford, whose widow Bertha donated the balance of the funds necessary to complete the project. A newsletter called "The Spray" was published each summer beginning in 1927. Social directors were hired beginning in 1934 to arrange social and recreational activities for all ages such as hikes, hay rides, and square dances.

In August of 1955, Hurricane Diane caused a disastrous flood at Paradise

Falls which leveled the disbanded Girls' Camp and did extensive damage to the picnic area at the Falls, the dam, the docks, and the grounds in general. The walking bridge above the falls was destroyed, as was the main bridge, which was quickly re-built.

Room and board facilities at Nestledown and Social Hall were phased out during the 1950s and it wasn't long before P.F. became a true "cottage colony." Social activities reached their peak during the '50s and '60s with the start of the memorable tradition of the annual men's fashion show, road rallies, weekly movies in the Social Hall, and the ever-popular hay rides and dances.

In 1968, the store/gift shop was razed to provide space for a new adult lounge which was paid for in part and furnished by the Women's Auxiliary. Its management has been the responsibility of that group ever since.

By the beginning of the 1970s, a handful of cottagers had drilled their own wells and winterized their cottages, allowing them to make Paradise Falls their permanent homes. Today, out of 87 cottages, more than twenty are occupied year-round.

During the 1980s, a decline in the number of families with children was noticed as present members aged, and their children grew up and moved on to other areas and activities. But in recent years, children's voices and activities have returned to Paradise, evidenced by the return of regular weekly arts and crafts programs; evening games in the Tea Room; Sunday School classes; and a resurgence of organized social activities. And so Paradise Falls continues on its path in the circle of life.

• • •

Paradise Falls was started in the spirit of developing physical, social, and spiritual well-being for its members and guests. A Christian fellowship and unity was the ideal which was strived for and accomplished.

After a study was made of similar resorts, the Association adopted two principles which are still held today: to hold the tract intact as a possession of the Association and to sell memberships therein which granted the perpetual use of a lot to each member, and to restrict the sale of memberships to members of the Lutheran Church (of any synod) in order to keep the resort loyal to Lutheran life and practice.

Membership, then as now, entitles the holder to enjoy all that Paradise Falls has to offer - its many wooded trails; the beach and Lake Crawford; the tennis, basketball, and shuffleboard courts; fun, games, dances, movies and other activities; and, of course, the worship with and fellowship of other Lutherans.



Sameness and change

Adapted from an article by Dr. Samuel E. Kidd, 1972

Sameness and change are the peculiar marks of Paradise Falls. The hills are the same and many of the trees but the fields are gone and so is the moss from the rocks in the stream. Swimmers in the lake

paddle across the shaded lane that once was the haunt of lovers. Generations of bridges with their carefully carved hearts and letters have yielded their standing place to high waters and new bridges. Roads have grown wider and noisier and oilier. Huckleberries and the wildest of the wildflowers have disappeared from the roadside. Nature has had its glory reassembled.

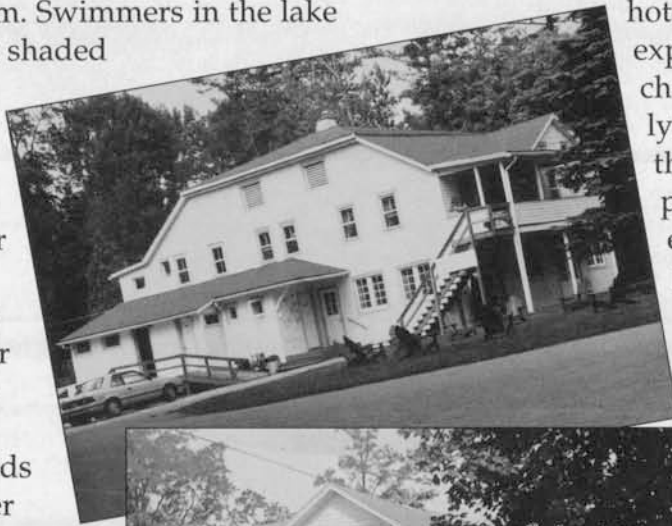
The reassembly of nature is paralleled by a reassembly of people. There was a day that schools and conferences had their spot in Paradise, and there was a continuing debate about what they gave to Paradise or took from it. There has always been a compilation of lives and 4 lifestyles here.

From its earliest experimentation in communal living to the initial success, but ultimate closure of Nestledown, to the failed dream of a major hotel, Paradise Falls has experienced myriad changes, while its underlying tenets remained the same. Through a process of addition and elimination, Paradise Falls became the cottage colony it is today.

I miss the wild strawberries and the bobwhites; the quietness of lonely roads and the early pioneers whose visions and sacrifice granted us our heritage without requiring that we honor them. But what I miss is

quickly forgotten with the first step on the soft ground in the spring.

Paradise continues to be a place where nature and people meet. And while both continue to change, there is a remarkable sameness that we hope will never be destroyed.



The deeper meaning of Paradise

Adapted from "What Paradise Falls means to me" by Edgar R. Trexler, Jr., 1972

Why do so many return to Paradise Falls year after year? For many, Paradise Falls is a place to renew sanity through its slower pace, quietness, and great natural beauty. But to sentimentalize is to trivialize. Its mystique runs deep, allowing a religious fulfillment to underlay all that is done here.

Paradise Falls provides refreshment. Nothing pretentious, nothing glamorous. Just a contentment and familiarity that comes from a quiet recognition of God's hand in daily life; a current of faith that runs silently and deeply through our lives. From summer to summer, this recognition becomes a reflex action, as automatic as breathing. It's simply a part of all that is Paradise Falls.

Paradise will change, perhaps in ways not even imagined. But as long as it retains its underlying character and strength, it will endure as a distinctive retreat.

**"Let us go off by ourselves
to someplace where
we will be alone
and you can rest awhile ... "**

Mark 6:31

The administration of Paradise Falls Lutheran Association

Paradise Falls has operated according to a charter and under the laws of the Commonwealth of Pennsylvania since its incorporation in 1925.

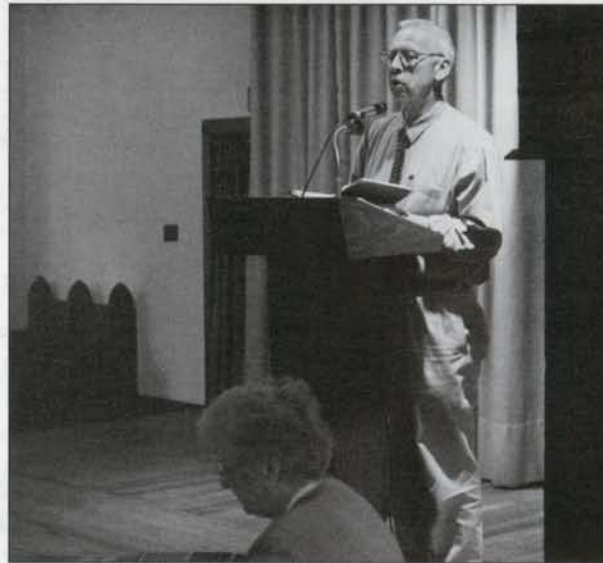
Its purpose is to provide healthful retreat and recreation for members and their friends and guests of the Association.

Members must be members in good standing of an Evangelical Lutheran Church. Membership benefits include: ownership of the whole tract and all the buildings except those erected by individual members; perpetual use of a lot and access to all of PFLA's facilities; one vote in all decisions of the Association.

The Board of Directors has the power to make rules and regulations for the operation, maintenance, management and control of the Association's property, equipment and all affairs.

The following have served as presidents of the Board since 1972:

Al Long	1973-74
John Segraves	1975-76
Max Pohl	1977-78
Herman Mariano	1979
Al Gaupp	1980
Robert DePaul	1981
Wendell Ehinger	1982-85
Ann Richards	1986-87
Arvids Ziedonis	1988-90
Henry Gally	1991
Cathy Shultz	1992
Diane Snear	1993
LeRoy Ness	1994-97



Rev. LeRoy Ness leads an annual meeting.



Over the years, the Adult Lounge has been the site of a variety of activities.

The Women's Auxiliary

Since its inception in 1929, the Women's Auxiliary has funded a variety of projects within Paradise Falls Lutheran Association and provided many opportunities for fellowship activities.

Nestledown was one of the earliest recipients of the auxiliary's efforts with the repainting and refurnishing of its lobby in 1932. Throughout the 1930s and into the '50s, additional projects were accomplished including: a soda fountain in Gate Lodge; Ecclesiastical furniture; improvements to the old swimming pool; purchase of a filmstrip projector and record player for the recreation program; playground equipment; and improvements to the tennis courts.

Some of the money necessary for the completion of Lake Crawford was raised by the auxiliary, and after the flood of 1955, the group aided in making repairs to the dam, the stairs to the Falls and draining and cleaning of the lake. The retaining wall at the beach was built by the auxiliary in 1960 and the adult lounge was furnished by the group, which also provided a large portion of the building costs.

In recent years, the auxiliary's mandate has been to support the ongoing projects of the association through various fundraising efforts including one of the most popular - the annual breakfast.

The Women's Auxiliary would like to thank all those who have contributed their time and efforts over the years to provide a continued fellowship for all PFLA members.

Memories ...



Social Hall-where we come together for worship, meetings, and fellowship.

... Paradise Falls means many happy memories. It has been a place for vacations, rest, relaxation - a welcome change from our busy life - a place to call our own when we lived in parsonages. Our children growing up, learning to swim, playing capture the flag, family and friends coming to visit ... soft, starlit summer nights; the beach on warm, sunny days. The always beautiful stream and falls. The friendly Tea Room ... picnics and pot-lucks ... the shared faith of Sunday worship ... the candles floating on the lake on Labor Day Sunday.

Now retired, we have the great pleasure of spending late spring to early fall in this place we have always thought of as "home" and now the laughter of grandchildren also fills the house.

Our hope is that Paradise Falls will continue to be what it has been for us and for future generations.

-- Jim and Maxine Christ

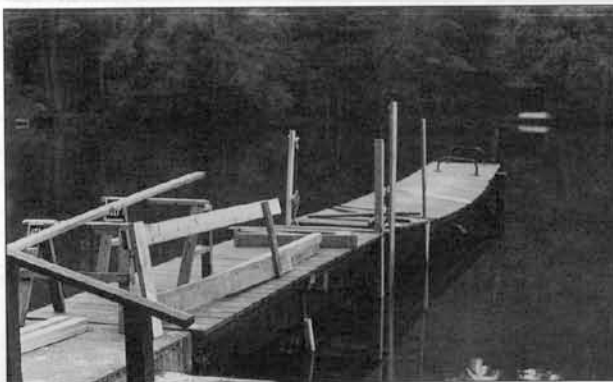
...When we first purchased our cottage in 1960, there were Sunday School classes for all ages; a P.F. baseball team; and many activities for children. Swimming was the main afternoon event for most people. The store still sold milk and bread and the gift shop was still maintained.

Our cottage was our 'paradise' - a retreat. Over the years, we've seen a community develop. And recently, with the growth of families and return of the generations, we see the future.

-- Marie Long

... Disconnected words flood my mind remembering the past 23 years ... acceptance, caring, belonging, family values, unspoiled nature, and peacefulness. There is a sense of continuity here as season follows season with subtle changes in the tapestry of P.F. as we lose some members and gain new ones. Mostly, I feel grateful to God that such a place and such a community exists for me and my family.

-- Betty Swartz Collins



The dock at the beach undergoes repairs.



The Pavilion at the Falls has been the scene of many a picnic.

...There are many paths of Paradise that intertwine in my mind. When I can retrieve them, I get the lift I need to go on and face life. I have been blessed to share these paths with many.

The paths may change slightly over the years, but I have memorized every moss-covered rock, climbing tree, shift in forest, and all are dear to my mind; across the lake, up the hill and beyond. There are many covered paths with a rich tapestry of overlapping leaves. Look up and you will see. Some paths are dark, some light, but all beautiful.

I feel richly blessed to have these paths, my family, friends, and memories, and my Lord to help add strength and vision to my daily walk. When I need a special lift or a sense of grounding in my life, on any given day I pick a path of Paradise in my mind and walk it in my heart. Thank you Paradise for helping to make me what I am today.

-- Sarah Schaffner Berry

Memories ...



Art Segraves wins the coveted P.F. Men's Fashion Show title in 1993



... Some of my fondest memories were made at P.F. I remember with a smile the many activities I participated in each year: the hayrides; the square dance in August; scavenger hunts; hikes to the old cemetery; "capture the flag" games at the Falls; and the always popular algae fights at the lake.

The Fourth of July Beach Olympics with penny hunts and greased water-mellon contest; talent show, magic shows and the hilarious all male beauty contest with the guys in drag.

... the amazing beauty of our natural surroundings. Sitting on the lifeguard stand late at night, it seems you can see a zillion stars. Whenever you visit the Falls, you can't help but be in awe of the eternal nature of water and rock. Other assorted memories ... the haunted house in the old Rec Hall before it was torn down; arts and crafts on the Social Hall porch; the bell used to bring all ages together for many events.

-- Julie Warburton



Barbara Snear displays a quilt made by the 'quilt-in-a-day' group in 1992.



Decorating bicycles and heading off into the sunset on a crowded "hay" ride -- what better way to while away the Summer?



... My memories are many and full ... sunny days at Lake Crawford; rainy days on the porch; ice cream cones for a dime; gray clay gathered at the beach and fun on the raft; picnics at the Falls; crafts in Rec Hall; and Social Hall movies; plays, fashion and talent shows, dances and more!

My jobs held at P.F. were many - delivering newspapers; dipping ice cream; editing "The Spray"; acting as Social Director; serving on various committees; and acting as President of the Association. My many friends and my memories made at Paradise will always live fondly in my heart.

-- Diane Ardell Snear



Many look forward to the bonfire each year.

Memories ...

... When our three children were very young, we found a way to buy the long-vacant Mahler cottage. As we scrubbed, painted, mowed, and hacked at weeds, we laughed and sang, and our cottage became our home. Eventually our children grew and left us, but Arthur and I stayed on.

As I prepare to leave now that I am all alone, my mind's eye sees Arthur on the porch lounge looking out at the pines in the twilight and saying, "God is good to us."

After sharing 40 summers with you, my dearest wish for you all is: May you sit back and enjoy the peace, the love of your families, and the knowledge that God is good to you too.

-- Mildred Hergenhan



The Spring Dinner is a social event that brings us together as a community.

... Although we've been part of the community here for about eight years, we still often need to tell people who the previ-



Walt Sollberger helps out during annual clean-up day in the spring.

ous owners of our cottage were before they can place us.

Many years ago, Walt's Boy Scout troop camped out in our present cottage, and when the cottage was for sale many years later, the old scout said, "I remember that place." So we arrived at Paradise Falls.

The cottage has come to mean a place of endless projects, a place where life sometimes seems simpler, a place of refreshing beauty. We leave in the Fall looking forward to moving back into our routines and commitments. Inevitably, Spring brings with it a longing to see how the cottage survived the Winter.

The comings and goings somehow make us aware that time is passing so quickly. We've put down new roots and found many happy times in this community. The loveliness which surrounds us is a wonder. The opportunity to worship as a community is a blessed tie.

-- Barbara Sollberger

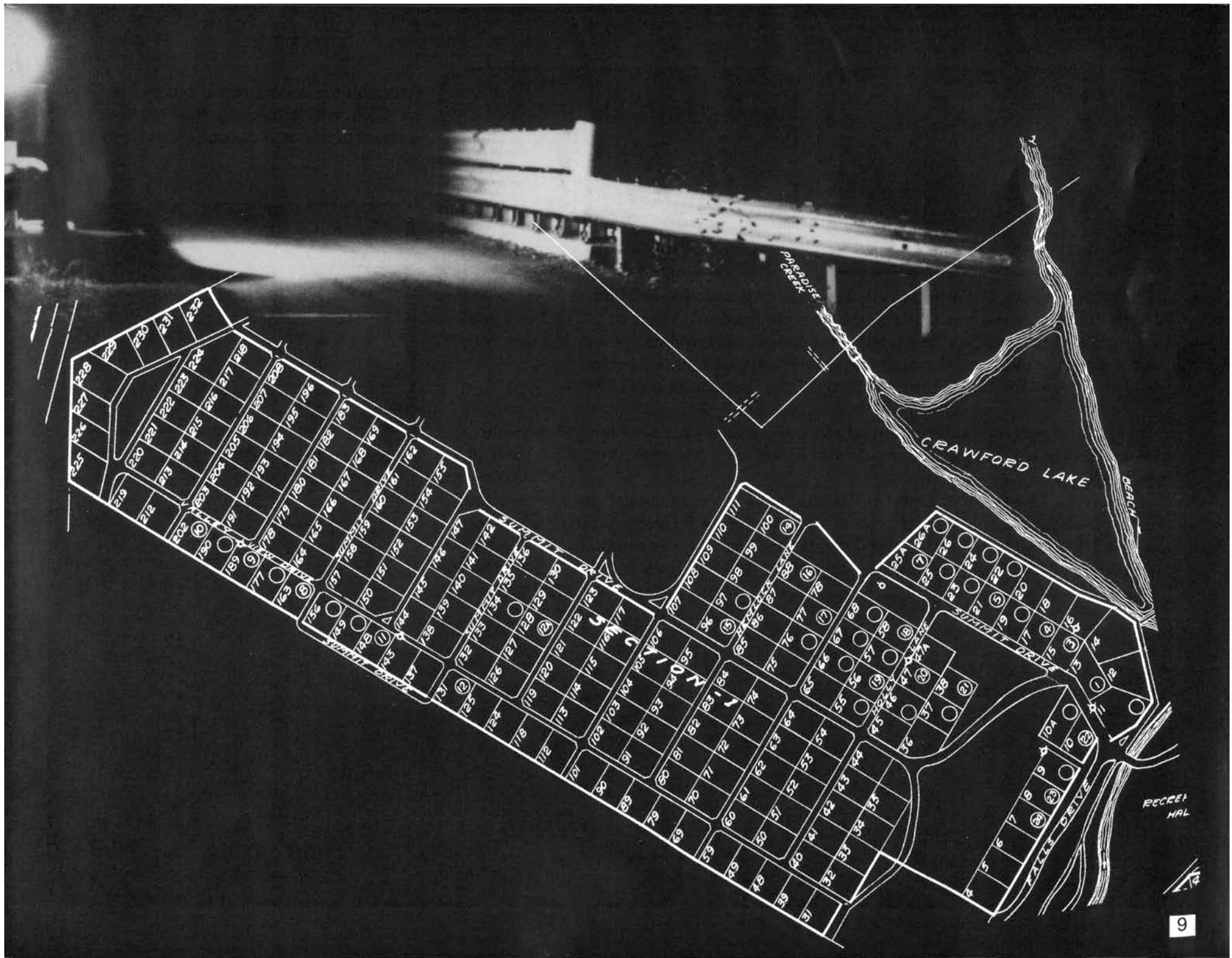
... After several years of visiting P.F. on weekend visits, we fell in love with the beautiful spot between Summit Road and the lake where we built our cottage. We moved into "The Hemlocks" on May 31st of 1963. It was built on the crest of the hill overlooking the lake, where the trees and surroundings were so beautiful. We looked forward to our weekends there where we could relax after a hectic week.

Our daughters and their husbands became frequent visitors. Soon our grandchildren also enjoyed our spot in the woods. Sunday church services at Social Hall, the beach, boating, fishing, hunting, walking through the dark to the Tea Room to buy ice cream cones and penny candy, and picnics by the stream were all favorites of our family. We have beautiful memories from a beautiful place.

-- Cora and Albert Niebaum



The Opening Day Picnic is another one of our traditions.



PARADISE CREEK

CRAWFORD LAKE

RECREAT MAL



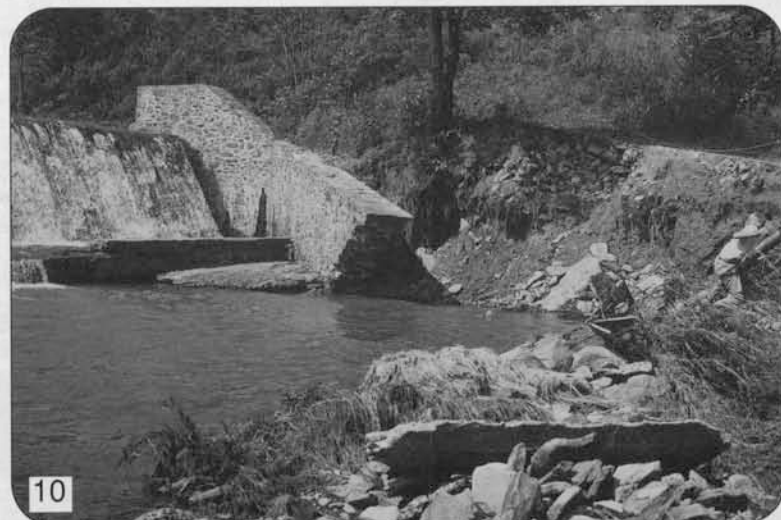
Although the waters raged during the flood of 1996, (left) fortunately, they didn't do the amount of damage caused by the "Flood of '55."

The natural beauty of Paradise Falls has been challenged several times over the past seventy-five years. The most notable disaster occurred in August of 1955 when Hurricane Diane plowed into the Northeast, wreaking havoc and reminding everyone how fragile were their surroundings. Although this event took place more than forty years ago, when people mention "the flood" they're talking about that fateful day in 1955.



... My oldest was only fifteen months old, and I pushed her stroller to Henryville to look at the damage. We got our water from Kidds' well and cooked on a gas stove at Speckler's. -- Barbara Snear

... It was our first summer rental at Paradise Falls. I was in the cottage with our four young sons listening to the radio reports and wondering if George would be able to make it. He did, but not until the next day because his car was caught in the flood and he had to scramble for higher ground because of the downed lines and trees. -- Irma Teter





AMMON

Anna Mary
Carole Depue
Freda Miltner
Virginia Warburton

"Lanco Pines"

Rev. George & Anna Mary Ammon
Gertrude Messner

Built by the Messners in 1931

COLLINS

Claude C. & Elisabeth A.

Elisabeth Swartz
Russell & Elisabeth Swartz
Rev. Bernard & Jeanne Thorpe
Rev. Erich Voehringer

Built by Rev. Voehringer and friends in 1957





DEACONESS

Sister Nora Frost

Sister Anna Melville
Frieda Brezinski
Rev. & Mrs. Frederick Brezinski

Built by Earl Tygert in 1930

FLOTHMEIER

Rev. Ernest
Rosemary Flothmeier
Frederick E. Flothmeier

“Winifried”

Rev. Ernest & Alwine Flothmeier
Rev. and Mrs. F. Flothmeier

Built by William Vernoy in 1931





KUHNLE

Louis F. & Wilma B.

"Edelweis"

Built by Harold Smith in 1966

LARISON

Douglas A. & Ruth S.
Brenda Lange
Michael Lange

Edward R. & Lydia P. Stielau
John Hoyt

Built by Floyd Cortright in 1932





MACKSOUD

Robert J., Sr. & Phyllis

William E. & Judith Ruhe Diehl
Rev. Edgar & Dorothy D. Ziegler
Miles Keasey

Built by Mr. Keasey
(foundation by Harold Heydt in 1935)

MacLEAN

Mildred L.

Wyeth & Mildred L. MacLean

Built by Harold Smith in 1963





MATTHY

Edward C. & Roberta K.
Christian P. Matthy

Built by Harold Smith in 1967

MIKLAU

Hildegard

"Hildewood"

Annette D. Bates
Harold O. & Annette D. Bates
Laura Miller Blithe

Built by William Shiffer in 1929





MOYER

Eleanor R.
Marilyn M. Block
Peter R. Moyer

Henry C. & Eleanor
Mr. & Mrs. Clinton Moyer

Built by William Vernoy in 1937

NESS

Rev. LeRoy T. & Evelyn D.
Elizabeth Ness Tobey

Eskild & Christa Hauglund
Max & Lidy Pohl
William Angerman
Dr. Emil E. Fischer

Built by Harry Hulbert in 1929





NIEBAUM/FRITZ

Mary N. & Eugene E. Fritz, Jr.
Dr. Albert H. & Cora K. Niebaum

“The Hemlocks”

Built by Harold Heydt in 1963

POHL

Carolyn H.
JoAnne Fisher
David H. Pohl

“Lasata”

Max E. & Carolyn H. Pohl
Harold E. & Hilda D. Heydt

Built by Harold Heydt in 1964





RICHARDS

Rev. Elton Jr. & Anne S.
E. Russell Richards
David R. Richards

George & Irma Teter
John K. & Edith Johnson
Charles Roswell

Built by Harold Heydt in 1937

SCHOLL

Rev. Paul M.
Ann Kidd Scholl Noonan

Rev. Paul M. & Dr. Violet Kidd Scholl
Rev. Paul Hoh
Herbert H. Faber
Charles P. Faber

Built by Harry Hulbert in 1928





SEGRAVES

Arthur W. & Susan

Richard W. & Olga Haag
Richard W. & Edna S. Haag
Mr. & Mrs. George W. Haag

Built by William Vernoy in 1937

SNEAR

George W. Sr. & Barbara A.
Dayle A. Malantonio
Donna A. Myers
Deborah A. Rodenbaugh
Diane Ardell Snear
George W. Snear, Jr.

Built by Ray Cortright in 1974





SOLLBERGER

Walter K.

"Fallscrest"

Margaret Jacobs & Grace J. Spielberger

Charles Jacobs

Louis Walters

Fred & Anna J. Fischer

Built by Quakertown area builder in 1926

TREISBACH

Frances M.

George & Frances M. Treisbach
Rev. Charles & Ruth C. Kerschmar
Rudolph & Catherine Burnett

Built by Harold Heydt in 1936





WERKHEISER

Dr. Linford A. & Pauline E.

Irene E. Kuntz

Built by Harry Hulbert in 1926

WESLEY

Joseph

"Roads End"

David Robert Zimmerman
George E. & Dorothy H.Fink
Dr. Erich Voehringer
Mrs. Paul C. Whipp & daughter

Built by Harry Hulbert in 1928





YOUNG

Donald & Jeanne

Leonard & Carol DePue

Nora Ehrig

Dr. & Mrs. Philip Ehrig

Robert Peterson

Elizabeth Swing Taylor

Amy Strode

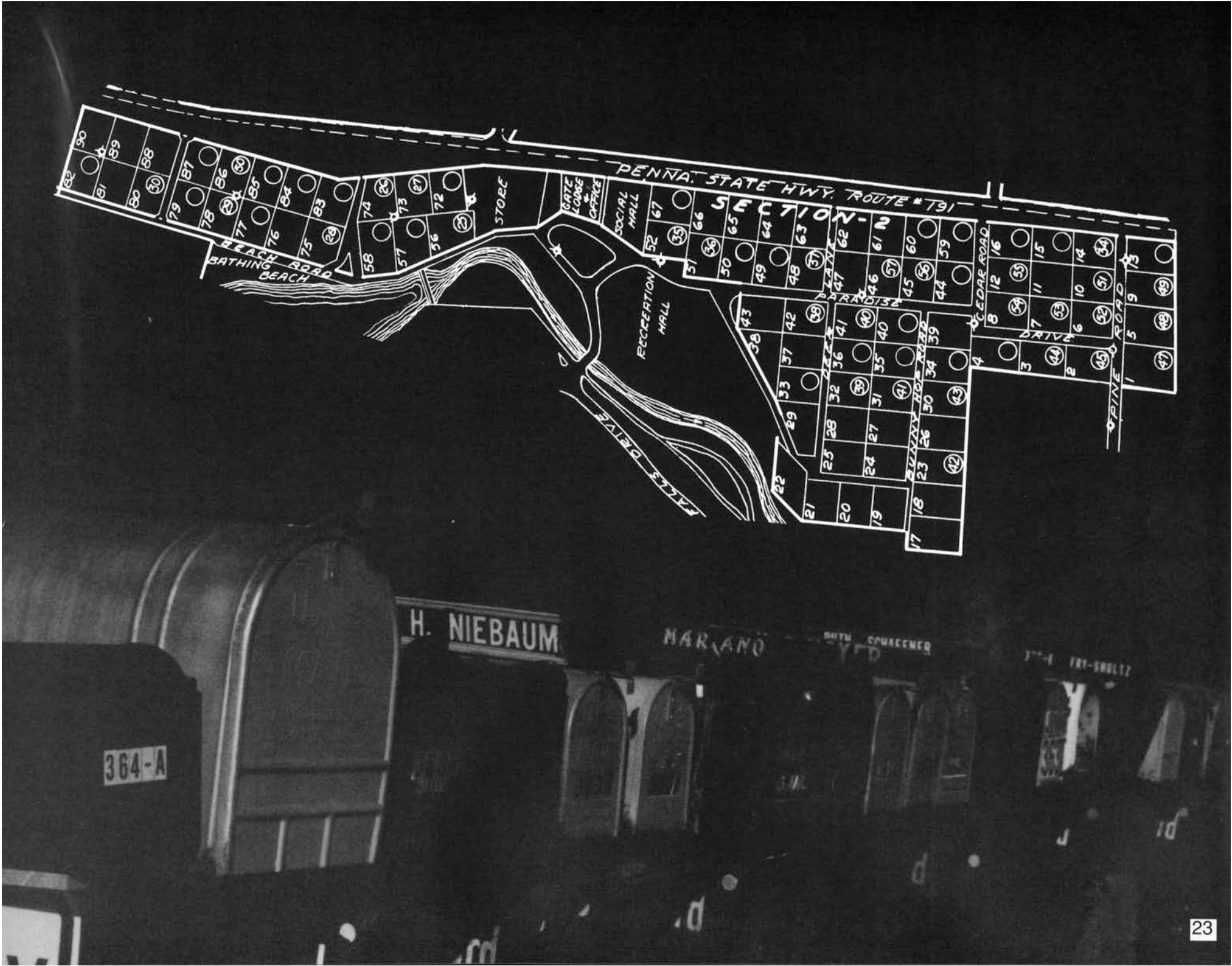
Built by Harry Hulbert in 1929



The beach is always busy on a sunny afternoon.



Canoes stand their lonely watch on a late Summer evening at Lake Crawford.





ACKER

Rev. Martin Luther & Irene E.

"Deer Woods"

Harold Heydt
Paul F. Holloway
Magda & Frieda Kretschmar
William H. Jenkins

Built by Harry Hulbert in 1927-28

BOND

David A. & Ellen W.
Arthur E. & Jacqueline Bond

John V. & Ann L. Lindholm
Anna F. Kidd
Rev. & Mrs. Harvey S. Kidd
Lasher Farmhouse

Remodeled in 1925 - Builder unknown





CARMICHAEL

Samuel N. & Nancy A.

Elizabeth Gehman Kidd
Samuel E. & Elizabeth Kidd
Dr. Frederick W. Meng

Built by William Shiffer in 1928

CHRIST

Rev. John E. & Freda F.
Rebecca Christ Goodell
John E. Christ, III
Paul M. Christ
Peter J. Christ

Albert K. & Johanna F. Gaupp
Marie A. Musgrove
W. Paul Elson
Delma Elson
Dr. Henry W. Elson





DIEHL

William E. & Judith Ruhe

"The Birches"

Dr. H. Grant & Carolyn W. Eisenberg
Dr. & Mrs. George Fisher

Built by Reading area builder in 1926

DIEROLF

Shirley H.
Steve Dierolf

"Berrybush"

Mrs. Frank Schmidt
Milton Tallardy
Maud S. Feldman
Rev. W. H. Stutts

Barn - remodeled by William Vernoy in 1932

(Due to a last-minute printing problem, the Dierolf cottage could not be placed in its proper location - Section 7.)





DITTMER

Joyce C. & Elizabeth M. Wartluft,
Deborah J. Stack
Rebecca J. Wartluft

"Schajawonge"
Anna L. Schuler

Built by Earl Tygert in 1928

EHRIG

Robert N.

John P. & Ida Ehrig
Oscar Bernd

Built by Floyd Cortright in 1932





FISHER

Richard D. & JoAnne

"Hill Eden"

Richard D. & Marion M. Taylor, Jr.

Helen Seemiller

Walter & Helen Seemiller

William G. & Helen F. Voit

Harrison & Mary Taylor

Mrs. L. & Miss D. Hampfler

Oscar & Margaret Heyen

Built by Harry Hulbert in 1929

GIBNEY

Rev. Herbert N. & Joan A.

"Schlupfwinkel"

Rev. Herbert & Dorothy T. Gibney

Rev. David G. Jaxheimer

Built by Harry Hulbert in 1927





HENDRICKS

Helen B. & Blair
E. Ester Greig
Nicole K. Greig

"Lakeview"

Edith B. Hertz & Helen B. Hendricks
Daniel Moyer
Erwin M. Moyer

Built by Harold Heydt in 1939

HORN

Dr. Edward T. & Eleanor W.
Jenny Wunder Galunic

"Hummingbird Way"

Eleanor Z. Wunder
Dwight L. & Florence M. Johnson

Built by Harold Heydt in 1961





JACOBSEN/NAUS

Mrs. John E. Jacobsen
Allison Naus Savercool

Alvin & Elizabeth Pederson
Rev. Ernst & Marguerite Schmidt

Built by John Mutz in 1950

KIRK

John & Helen

Helen Kirk
John M. & Eva K. Phillips
Rev. John Miller
William C. Buckner

Built by Harry Hulbert in 1925





KOENIG

Robert C. & Elsie
Susan Georgadis
Ronald Koenig

“Koenig’s Castle”

Rudolph J. Hiller
Max Moessner
Harry M. Nofer
Florence Logan

Built by Harry Hulbert in 1925

LONG

Marie E.
David Long
John Long
Robert Long

“Long Pines”

Rev. Alfred L. & Marie E. Long
Alice L. Lucas
Florence Tienken

Built by Earl Tygert in 1930





MAGILL

Patricia Stevens Magill
Charlotte Stevens Thompson

"Woodland Echos"

Linford & Alice Stevens
Mrs. Stover

Built by Floyd Cortright in 1933

MILLER

Ernest E., Jr.

Rev. Ernest & Helen K. Miller
Elmer F. & Claire K. Hermansdoerfer
Clara Rossman

Built by Harry Hulbert in 1927





MONSON

C. Robert

Dr. Robert & Anna R. DePaul

Rev. David C. Burnite

John Kuehner

Marie Roeth

Built by H.S. Hulbert in 1927

NEFF

Charles K. & Noreen H.

Martha N. Neff

"Primrose"

S. Marie Huppert

Paul W. Ohl

Nora R. Ohl

Built by Harry Hulbert in 1925





PAYNE

George E. & Pearl A.
Frederick Payne
Jeffrey Payne
Deborah Worthington

“Payne’s Palace”

Joyce Moser
George & Esther Ney
Esther Koons

Built by Harvey Hoffman in 1926

REINBOLD

David Reinbold
Alice S. Reinbold

“Rualpa”

Ruth Reuning
Alice Reinbold
Pauline Werkheiser

Rev. Bela & Louise W. Shetlock

Built by Harold Heydt in 1935





SCHAFFNER

Ruth B.
Sarah Berry

“Wit’s End”

Dr. & Mrs. John Schaffner
Frank & Elsie Hersh
Rev. H. P. C. Cressman

Built by Earl Tygert in 1928

SEGRAVES

John W. & Beulah A.
Mark A. Segraves
John C. Segraves
Arthur W. Segraves
Mary Edith Lindholm

Hilda Van Natten
James & Hilda Van Natten
Rev. Charles Kern
Walter Gordon
Rev. August Pohlman
John R. Lemmert

Built by Harry Hulbert in 1926





SHULTZ

Catharine Fry & Frederic R.

"Tranquil Timbers"

Rev. Dr. Harold C. & Martha K. Fry
Etty Engel

Built by Harold Heydt in 1946

SMALLEY

Ruth E.

Ruth E. Haase
Adolph & Ruth E. Haase
Emma E. Haase

Built by William Vernoy in 1929





SPACHT

Dorothy

Carl E. & Dorothy Spacht
Rev. Rufus Kern
Mrs. Charles Haines

Built by Dr. Haines in 1931

SPEERS

Dr. Herbert K. & Katherine S.

"Woodsedge"

David H. & Wilma S. Ramsden
Rev. Edward O. & Elizabeth Lukens
Dr. Charles Bowman
Percy Fell
Clarence Ackerman

Built in 1930 by the Ackerman Family





TETER

Irma F.
Paul R. Teter
George S. Teter, Jr.

George S. & Irma F. Teter, Sr.
Rev. Jacob Flegler

Built by Clinton Keller in 1928

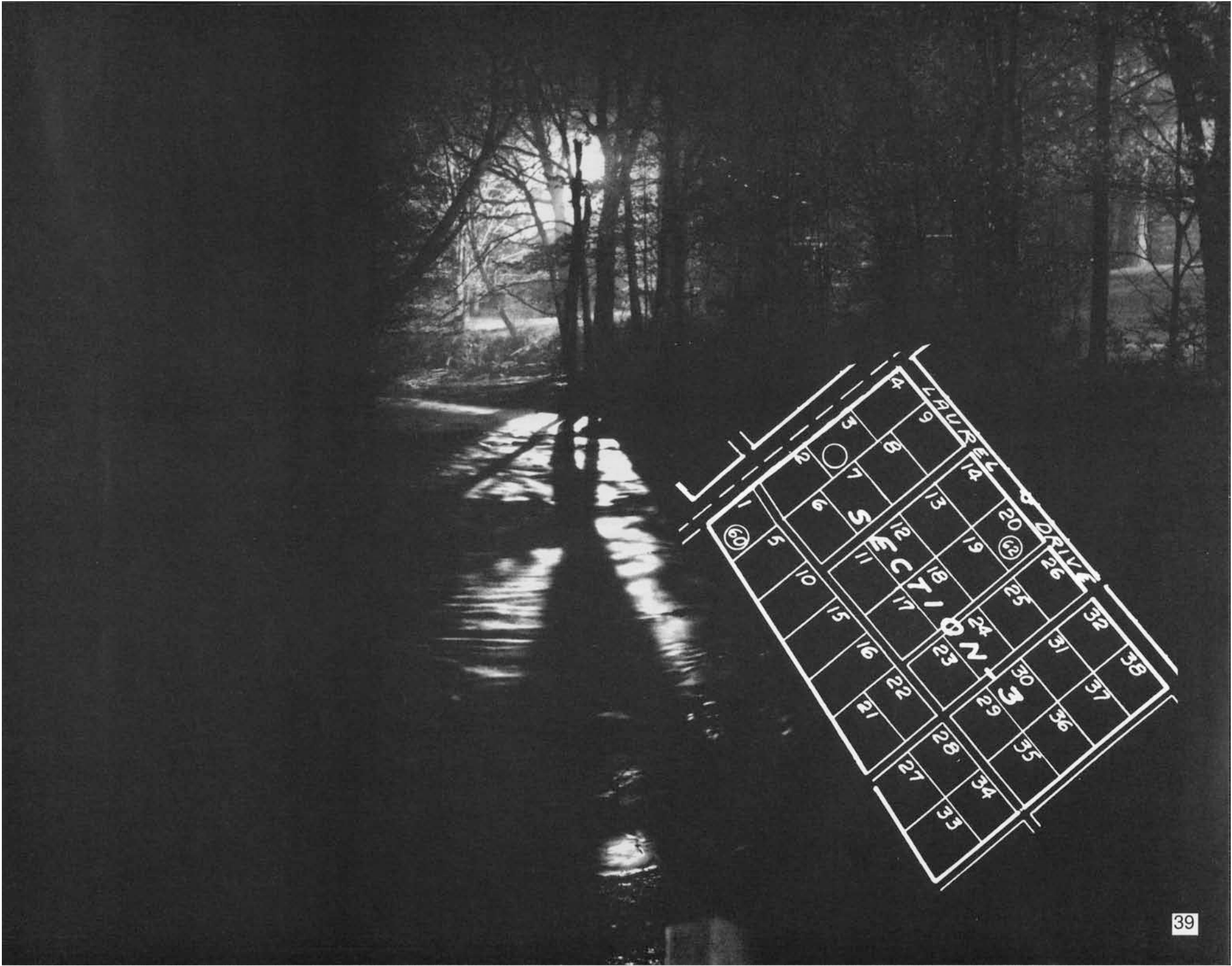
ZINKLER

Rev. Leon C. & Barbara A.

Jeffrey Gilbert
Albert & Mary Gaupp
Albert & Johanna Gaupp
Hilda Downing
Frederick & Arlene Sauerwein
Harvey E. Ulrich
V.W. Meng

Built by Floyd Cortright in 1933







GALLY

Henry R. & Martha S.

M. Alberta Ardell & Martha S. Gally

M. Alberta Ardell

Mrs. Martin L. Koons

Martin Luther Koons

Built by Harvey Hoffman in 1925

ZIMMERMAN

David Robert

Elizabeth M. Zimmerman

Travis Bailey III

John Mangum

Rev. David & Louise L. Vikner

Joseph & Elizabeth Clifford

Elsie & Florence Hines

Built by Frank Stanisci in 1951







BAUERS

Rev. Robert M. & Dorothy W.
Christina M. Bauers
John C. Bauers
Miriam Bauers

"Hill House"

PFLA Dietrich House
Dimmic Dietrich Farmhouse

Builder unknown

BRADLEY

Napoleon & Marguerite

"Nestledown"

Burton Mitchell
PFLA Nestledown Inn
Dimmic Dietrich Barn

Builder unknown





DITMARS

Kenneth O. Jr. & Ruth E.
Kenneth M. Ditmars
Paul S. Ditmars

Rev. Charles A. & Evelyn J. Mathias
David Miller
Carrie Kreckman

Built by Harry Hulbert in 1927

DITTMER

Dr. Luther A. & Dr. Ingeborg
Dr. Kalogreant Sigurd Dittmer
Christopher Gunter Dittmer

"Ingedell"

Clarence & Marie Dittmer

Built by Clinton Keller in 1931





EHINGER

Wendell C. & Elizabeth K.

Robert R. & Margaret E. Dorn
PFLA Brown Cottage

Built by William Vernoy in 1929

FRITZ

Otto William & Sandra H.
Christopher Fritz
William Fritz

"Schnee Glockchen"

Alvin Pederson
Vernon Stover
M. Frances Goeckel
J. Constantine & M. Frances Goeckel

Built by Clinton Keller in 1937





GILBERT

Kathleen
Jennifer Gilbert
Jeffrey Gilbert

Mrs. John E. Jacobsen
Mrs. Alfred Naus
Rev. Alfred Naus
Mrs. Gomer Rees
Dr. Spieker

Built by Clinton Keller in 1931

HOYT

Curtis W.
Margery H. Pentland
David G. Sprecher
Jane Sprecher

"Eureka"

J. Curtis & Jean M. Hoyt
John M. & Sara M. Sprecher
J. Dallas Mueller
Frank W. Mueller

Built by Harry Hulbert in 1925





KNAUS

Elsie R.
Andrew Steven Knaus

“Wald-Eck”

Elsie Knaus
Carl Breischaft

Built by Harry Hulbert in 1927

MANGUM

Margaret M.

John M. & Margaret Mangum
PFLA Carriage House

Built in 1926
Rebuilt in 1961





MASENHEIMER

Fred & Elizabeth

Rev. Bernard N. & Jeanne L. Thorpe

Joseph & Elizabeth Clifford

James & Hilda Van Natten

Rev. Clifford Hays

Built by Milton Storm in 1928

NEILSSEN

Rev. Robert T. & Evelyn P.

Dr. George S. & Nellie V. Barrett

Leon & Julia Gilbert

William & Kathleen N. Gilbert

PFLA White Cottage

Built by William Vernoy in 1929





REISCH

Rev. Paul C. & Catherine D.
Susan Reisch
Jonathan Reisch
Paul C. Reisch, Jr.

Clara Klee

Built by Clinton Keller in 1937

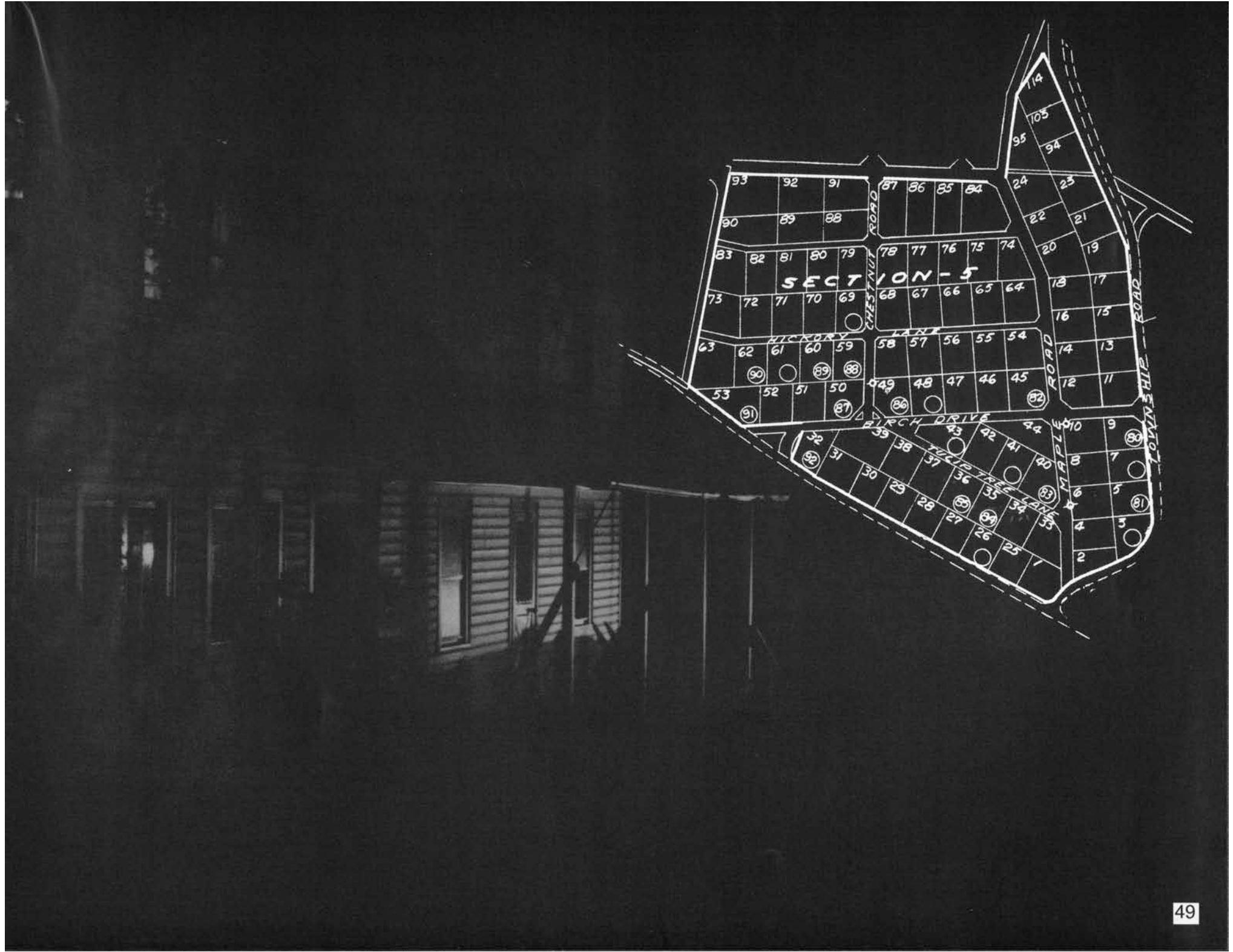
SCHROEDER

Martin G. & Margaret N.
Karen E. Slimm

August G. & Rhoda Ries
Bessie Kleibacher

Built by Harold Heydt in 1935







ACKER

Maria Graciela

Richard T. & Maria Graciela Acker

Richard T. Acker

Rev. & Mrs. Martin Acker, Sr.

Built by Harold Heydt in 1946

DANGA

Fritz & Irene E.

Karl I. Danga

Dagny Danga-Storm

Frederick Neuhardt

Sister Catherine Neuhardt

Elizabeth Hoehn

Rev. Elwood Schwenck

Built by Clinton Keller in 1931





FLISSER

Rev. Frank & Martha E.

Rev. Asa Wohlsen
Dr. Charles Bowman

Built in 1932

HARKINS

Jack V. & Betty

Mrs. Russell Stein
Rev. Ralph Hartzell
Rev. H. W. Fitting

Built by William Shiffer in 1928





HERGENHAN

Mildred F.
Robert J. Hergenhan
Susan H. Rencken

Rev. Arthur W. & Mildred F.
Hergenhan
Anna Mahler

Built by Harry Hulbert in 1930

Under contract of sale to Rev. Dr.
Robert H. Linders and his
sister, Gail Linders, of Doylestown, PA

MEYER

Alice B.
Darlene A. Marks
Donna Westerman Wolk

William & Alice B. Westerman
Anna M. Spachman

Built by Clinton Keller in 1930





MILLER

Rev. Richard A. & Carolyn M.

Edwin A. & Doris E. Kucerick
Arthur Leberknight
Erwin W. Moyer

Built by Harold Heydt in 1935-36

MITCHELL

Burton & Ruth

James W. & Doris C. Morentz
Louise C. Morentz
Rev. & Mrs. Paul I. Morentz

Built by William Vernoy in 1935





MOYER

Beatrice R.
Howard P. Moyer
Warren J. Moyer

Jay P. & Beatrice R. Moyer

Built by Harold Heydt in 1951

OLSON

Rev. Royal L. & Rev. Grace C.
Royal L. Olson, Jr.
Eric D. Olson
Gary D. Olson
Cindy Camp

"Sunset"

Gennaro & Elaine Ruggiero
PFLA

Builder unknown
(Former home of Harold Heydt's parents)





POHL

Lidy
Hildegard Miklau
Ingrid Titus
Stephen Titus

Herbert F. Meyer
Herbert F. & Mildred M. Meyer
L.W. & B.M. Bitner

Built by Earl Tygert in 1928



TITUS

Donald W. & Joan Titus Herbanek

Marion V. Titus
Emma Van Gilleuwe

Built by Harold Heydt in 1934



ZIEDONIS

Rev. Dr. Arvids, Jr. & Zigrida
Dr. Douglas M. Ziedonis
Rev. Ruth S. Ziedonis
Eric A. Ziedonis

Rev. Klaus & Irene Molzahn
Harry Klauswitz
Rev. Dr. Henry Fisher
Rev. Allen Fisher

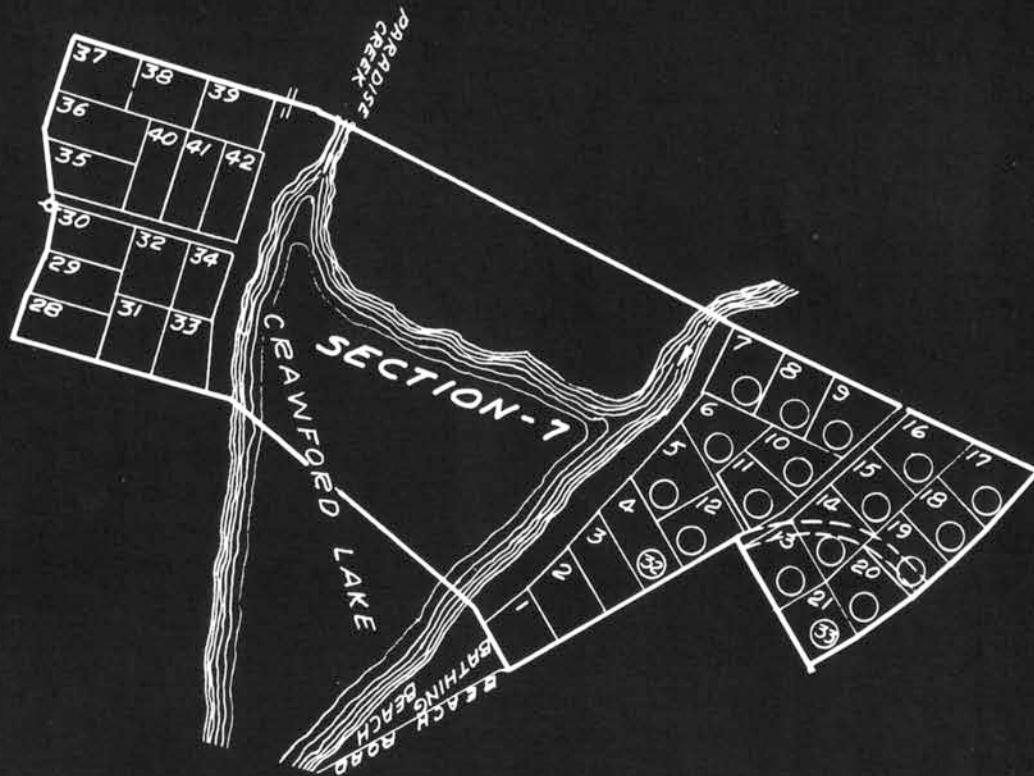
Built in 1932
Rebuilt in 1985



Changing signs are signs of
changing times.

But somehow at Paradise
Falls, even though things
change, they remain the
same.





BEACH
CLOSED
NO
LIFEGUARD
AVAILABLE



MARIANO

Herman A. & Linda Dickinson

Herman A. & Gladys Mariano
Built in 1971



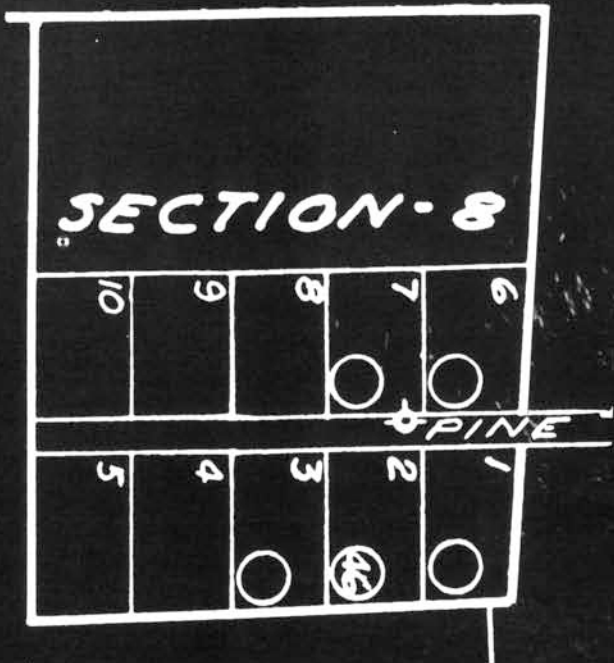
NAUS

Ramon R. & Sonia H.
Stacy L. Deuel
Leslie Ann Rueger
Allison Rae Savercool

Bertha Crawford

Built by Harold Heydt in 1939

PICNIC GROVE





MILLER

Dorothy
Judith A. Sobeck

Donald & Dorothy Miller
Adolph & Mae Klein

Built in 1958

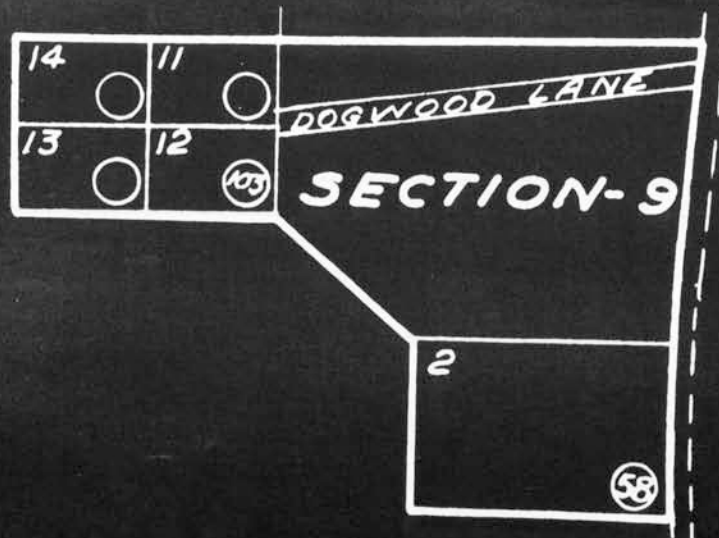


The kids of P.F. have a great playground, built by volunteers in the early 1990s.

... Memories are many ... walking to Sunday School in Henryville in patent leather shoes and silk stockings; swimming in the creek by the ice house at the base of the Falls; almost stepping on a copperhead on the path to the Falls; nickel ice cream cones; hikes to Red Rocks with Pastor Ammon; tennis tournaments; and meeting my husband in 1933 -- all have created a wonderful 68-year eclectic experience.

-- Jean Hoyt







CHRIST

Rev. James B. & Maxine M.
James A. Christ
Kathryn B. Haupt

“Abend Ruhe”

PFLA
Mary J. Drexel Home
Mr. & Mrs. William Braun
A. Raymond Raff

Builder unknown

CRANE

Mildred E.

William L. & Trina E. Jeffrey
Frederick J. & Arlene C. Sauerwein

Built by Harold Smith in 1967



A Tribute to Paradise Falls

By Julie Warburton

Oh come with me to Paradise Falls
It is a beautiful place to explore.
Take a walk along our red shale roads,
Enjoy the lake, the woods, the Falls, and more.

Oh come with me to Paradise Falls
On the beach we can sit all day.
Let's dive off the dock and swim to the raft
Or a rousing game of volleyball play.

Oh come with me to Paradise Falls
Relax and forget your troubles and strife.
Treasure the quiet and read a good book,
Take a vacation from everyday life.

Oh come with me to Paradise Falls
Come to church on Sunday to sing and pray.
Thank God for His grace upon this place,
For family and friends, for each sunlit day

Oh come with me to Paradise Falls
We can play tennis, or fish in the stream.
We can hike through the woods, watch the chipmunks and birds.
This place is lovely - you'll see what I mean!

Oh come with me to Paradise Falls
In the evening we'll meet at the Tea Room.
We'll share an ice cream cone and play some games,
Later stroll home by the light of the moon.

Oh come with me to Paradise Falls
Enjoy the fellowship we all share here.
All are made welcome, please stay and join us
As we celebrate seventy-five years.

*In loving memory of her grandfather
Rev. George B. Ammon*



Index of cottages

<u>Membership name</u>	<u>cottage found on page</u>	<u>Membership name</u>	<u>cottage found on page</u>
ACKER, Rev. Martin L. & Irene.....	24	MARIANO, Herman A.....	58
ACKER, Maria Graciela.....	50	MASENHEIMER, Fred & Elizabeth.....	47
AMMON, Anna Mary.....	11	MATTHY, Edward C. & Roberta K.....	15
BAUERS, Rev. Robert M. & Dorothy W.....	42	MEYER, Alice B.....	52
BOND, David A. & Ellen W.....	24	MIKLAU, Hildegard.....	15
BRADLEY, Napoleon & Marguerite.....	42	MILLER, Dorothy.....	60
CARMICHAEL, Samuel N. & Nancy A.....	25	MILLER, Ernest E., Jr.....	32
CHRIST, Rev. James B. & Maxine M.....	62	MILLER, Rev. Richard A. & Carolyn M.....	53
CHRIST, Rev. John E. & Freda F.....	25	MITCHELL, Burton & Ruth.....	53
COLLINS, Claude C. & Elisabeth A.....	11	MONSON, C. Robert.....	33
CRANE, Mildred E.....	62	MOYER, Beatrice R.....	54
DEACONESS - Sr. Nora Frost.....	12	MOYER, Eleanor R.....	16
DANGA, Fritz & Irene E.....	50	NAUS, Ramon R. & Sonia N.....	58
DIEHL, William E. & Judith Ruhe.....	26	NEFF, Charles K. & Noreen H.....	33
DIEROLF, Shirley H.....	26	NEILSSEN, Rev. Robert T. & Evelyn P.....	47
DITMARS, Kenneth O., Jr. & Ruth E.....	43	NESS, Rev. LeRoy T. & Evelyn D.....	16
DITTMER, Joyce C.....	27	NIEBAUM, Albert & Cora.....	17
DITTMER, Dr. Luther A. & Dr. Ingeborg.....	43	OLSON, Rev. Royal L. & Rev. Grace C.....	54
EHINGER, Wendell C. & Elizabeth K.....	44	PAYNE, George E. & Pearl A.....	34
EHRIG, Robert N.....	27	POHL, Carolyn H.....	17
FISHER, Richard D. & JoAnne.....	28	POHL, Lidy.....	55
FLISSER, Rev. Frank & Martha E.....	51	REISCH, Rev. Paul C. & Catherine D.....	48
FLOTHMEIER, Rev. Ernest.....	12	RICHARDS, Rev. Elton P., Jr. & Anne.....	18
FRITZ, Otto William & Sandra H.....	44	REINBOLD, Alice S. & David.....	34
GALLY, Henry R. & Martha S.....	40	SCHAFFNER, Ruth B.....	35
GIBNEY, Rev. Herbert N. & Joan A.....	28	SCHOLL, Rev. Paul M.....	18
GILBERT, Kathleen.....	45	SCHROEDER, Martin G. & Margaret N.....	48
HARKINS, Jack V. & Betty.....	51	SEGRAVES, Arthur W. & Susan.....	19
HENDRICKS, Helen B. & Blair.....	29	SEGRAVES, John W. & Beulah A.....	35
HERGENHAN, Mildred F.....	52	SHULTZ, Catharine Fry & Frederic R.....	36
HORN, Dr. Edward T. & Eleanor W.....	29	SMALLEY, Ruth E.....	36
HOYT, Curtis W.....	45	SNEAR, George W., Sr. & Barbara A.....	19
JACOBSEN/NAUS, Mrs. John E. & Allison Naus Savercool.....	30	SOLLBERGER, Walter K.....	20
KIRK, John & Helen.....	30	SPACHT, Dorothy.....	37
KNAUS, Elsie R.....	46	SPEERS, Dr. Herbert K. & Katherine S.....	37
KOENIG, Robert C. & Elsie.....	31	TETER, Irma F.....	38
KUHNLE, Louis F. & Wilma B.....	13	TITUS, Donald W. & Joan Titus Herbanek.....	55
LARISON, Douglas A. & Ruth S.....	13	TREISBACH, Frances M.....	20
LONG, Marie E.....	31	WERKHEISER, Dr. Linford A. & Pauline E.....	21
MACKSOUND, Robert J., Sr. & Phyllis.....	14	WESLEY, Joseph.....	21
MacLEAN, Mildred L.....	14	YOUNG, Donald & Jeanne.....	22
MAGILL, Patricia S.....	32	ZIEDONIS, Rev. Dr. Arvids, Jr. & Zigrida.....	56
MANGUM, Margaret M.....	46	ZIMMERMAN, David Robert.....	40
		ZINKLER, Rev. Leon C. & Barbara A.....	38

Afghan design



THE DAM



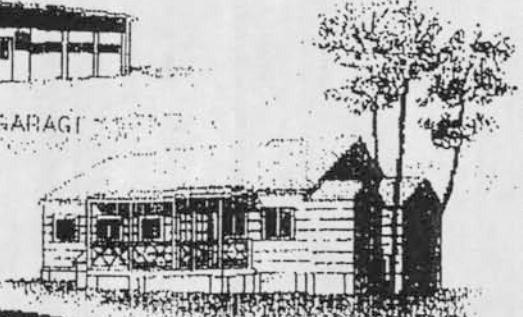
THE PAVILION



THE GARAGE



THE LOUNGE



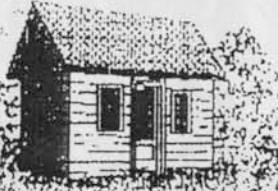
THE REC HALL



Paradise Falls Lutheran Association



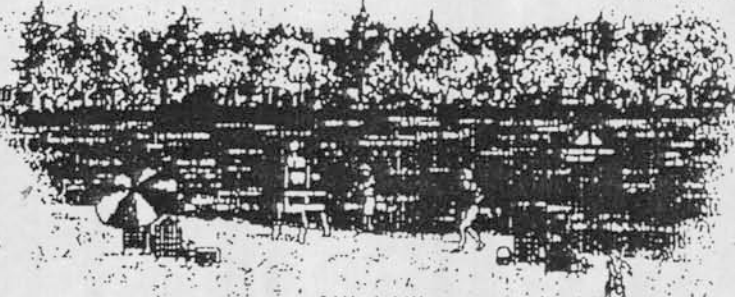
THE SOCIAL HALL



THE OLD GAS STATION



GATE LODGE

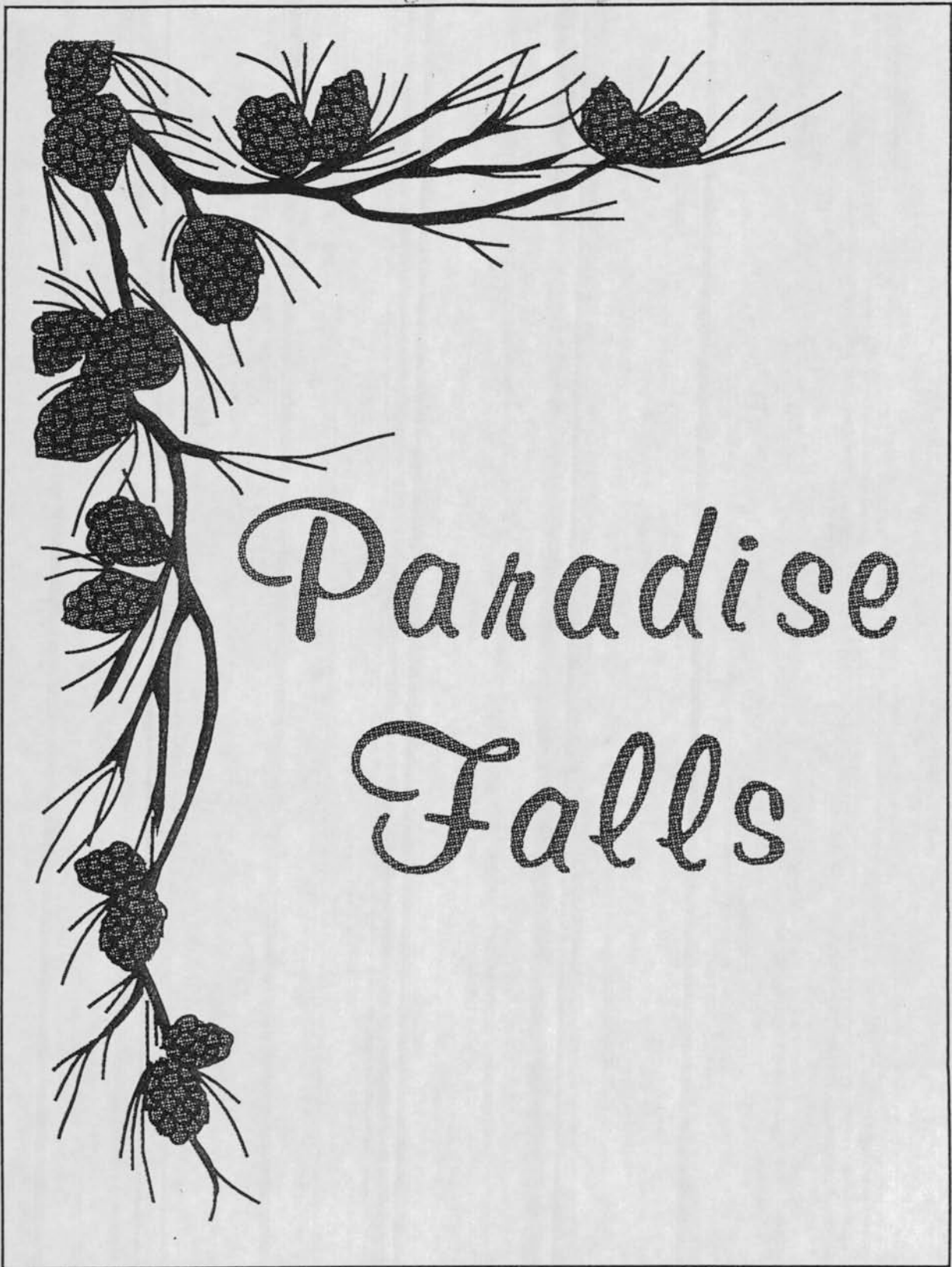


THE LAKE



Flag design

75th



6:00 PM

APPETIZERS

6:30 PM

WELCOME AND PRAYER, PASTOR RICHARD MILLER

DINNER

PERFORMANCE BY
PETER AND THE HEMLOCK HOOTERS

READING FROM:
FOREVER PARADISE, BY SARAH BERRY

RECOGNITION OF SOME OF THE PEOPLE THAT HAVE
MADE PARADISE FALLS LUTHERAN ASSOCIATION SUCH
A UNIQUE PLACE

REV. BOB BAUERS, DR. LUTHER DITTMER,
KATHY GILBERT, CAROLYN POHL, BARBARA SNEAR,
REV. PAUL REISCH, META WILSON,
REV. DR. ARVIDS ZIEDONIS

Music Provided by Joe Napolitano courtesy of Jean and Pat Connor

The Masenheimer Cottage

Written by Bill Hoover as told
by Bob Bauers and Fred Masenheimer



The current Masenheimer cottage was originally built by Milton Stone, in 1928, for Rev. Clifford Hayes. Hayes was the primus motor in organizing Paradise Falls. He landed in the Paradise Valley by chance after having a motoring accident on old 715 in 1919 or 1920. He had to spend almost two years recouping here and rented the Harvey Dietrich farm (now Bob Bauers home) for his restoration. Hayes was a minister at a then large Philadelphia congregation (St. Johns, which at that point was deep in central Philadelphia near the now Ben Franklin Bridge and later moved to Overbrook). Hayes was apparently very well connected both with other Philadelphia clergy and with some from New Jersey and New York.

During his time here he met another Lutheran Philadelphian, Raymond Raff, who had purchased land along the lower Swiftwater Road and was recouping from TB. Both fell in love with the lower Paradise Valley and Hayes hatched a plan to create a summer community here. Raff donated some of his lands in 1922 to what would become Paradise Falls Lutheran Association and Hayes started organizing his friends to come and build houses here (quarter acre lots with lots of Liebesraum). In the mid 20's he commissioned Milton Stone to build a fairly substantial large stone home on a hillock east of Route 191- the current Masenheimer home. At that point, it was intended that our lake should have been constructed down Laurel Lane on Cranberry Creek- but there was not enough flow for this so eventually it was done on Paradise Creek.

Hayes apparently used the home in summers thru 1955, when he retired here. Shortly thereafter, his wife died of cancer and he moved away to live with his daughter. He sold the home to James and Hilda Van Nattan. Hilda also died of cancer and then James shot himself. The house then passed on to Joseph and Elizabeth Clifford. Their daughter, Kathy, would marry into the Naus family. Joseph would also eventually die of cancer. In the 70s the home was sold to Rev Bernard Thorpe (of St. Peters church in Lafayette Hill) on a recommendation from the Hoover family who was also at St. Peters. They owned it for a few decades but were not often present at PF. Bernard also died of cancer and then the home was sold to the present owners, the Masenheimers. The Masenheimers feel in love with Paradise Falls at first sight and spent many years fixing up the house.

Many believe that the house is haunted and the long record of deaths and suicide cast some credibility on this rumor... perhaps we will all learn more tonight from some of our guests?

The original (unofficial) Paradise Falls historian and archivist was Rev. George Ammon who was the first social director at Paradise Falls during the summers of 1934 - 35 while he was a student at the Lutheran Theological Seminary in Philadelphia. He loved photography and history and Paradise Falls, so it seemed natural, as he began to spend subsequent summers at PF, that he would begin to chronicle the happenings of his beloved summer home.

He took pictures and slides and saved Sprays and surveys and newspaper articles which he housed in numerous files. He was instrumental in creating the booklet for our 50th anniversary insisting on having the pictures of every cottage on our grounds in it. George's wife, Anna Mary Ammon, assisted her husband in numerous ways with all his historical activities. She typed the early Sprays and kept records of happenings at PF for the files.



Later, in the late 90's and early 2000's, Freda, George and Anna Mary's daughter, flew in from Colorado every summer for seven years to care for her mother at the cottage after George's death. On those long summer days, Freda, who had an historical inclination herself, had the time to go through all the files, updating, adding current information, taking pictures, conducting interviews of long-time PF people who could provide priceless recollections of our history, searching for answers to many historical questions, and creating her own collection of 17 looseleaf notebooks that now contain priceless photos and history of our "little piece of Paradise". Freda's sisters, Jinny and Carole, are her assistants, who do the Pennsylvania work here while Freda is at her home in Colorado during the winter months.

Bob Bauers is an iconic figure at Paradise Falls. Who else but Rev. Bob Bauers could sport a speedo well into his eighties?

Born in 1921 in Camden County NJ to a Lutheran preacher, Bob and his parents moved to Philadelphia when he was six years old. He grew up in the Germantown area. Bob's family Philadelphia roots go back 300 years. Bob graduated from Muhlenberg College, and then went on to seminary to earn his Masters of Divinity. In 1951 he earned a Masters Degree in Social Services at Bryn Mawr College.

He met his wife, Dorothy while working at a camp for underprivileged children. They married in 1945 after the War and honeymooned in Mountain Home. Dorothy graduated from Bucknell University.

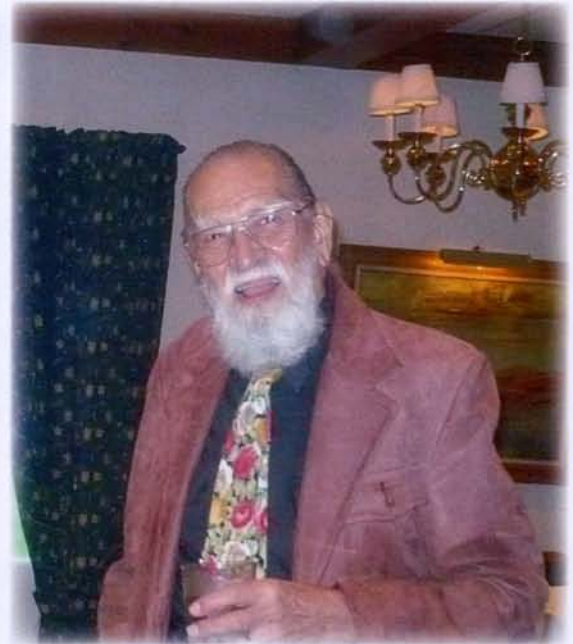
Dotty had attended the Girls Camp at Paradise Falls as a girl in 1928. Bob and Dottie were again introduced to Paradise Falls over the years, starting with their Honeymoon in Mountain Home, and continuing in 1953 when he met Mrs. Morentz during a visit to the Ditmars in New York. From this meeting, Bob and Dottie agreed to rent her cottage (now the Mitchell Cottage) for the summer of 1953.

Bob acquired his Paradise Falls home for \$500. It had housed the wait staff for Nestledown during its years of operation. These waiters and waitresses, sons and daughters of Lutheran pastors, had reacted to the news that they would not be getting a raise by "trashing" the house. Bob inquired about the building, and was told by the Board if he wanted to buy it, he should make an offer. He offered \$500, which was accepted. So, Bob and Dotty got a fixer upper.

The Bauers commissioned Harold Heydt to put on a new roof, install new windows and make other necessary repairs. Bob, Dottie and their three children, Chris, John and Mary then became fixtures at Paradise Falls.

Many of Bob's friends from Brooklyn, such as the Olsons and Gibneys also purchased cottages at Paradise Falls and they could be seen most weekends, where else but on the beach. The beach was where Bob held court and where many lively discussions about Lutheranism took place on hot sunny days through the years.

In recent years, Bob has hosted forums and is now hosting a "Coffee Klatch" allowing Paradise Falls members to further examination of the Lutheran faith. He has also served on the Membership Committee for many years.



Dr. Dittmer must have started coming to Paradise Falls in the early 1930's with his family, as he can remember when the gas station (shack across from gate lodge) opened in 1931, with 3 different brands of gasoline (14 cents a gallon). He can remember the "ice houses" before we had fridges and as he often says he is probably the only person alive today who carried stones for the dam. He can remember mucking the stables at "Abenruhe Farms" near the Christ cottage and he can remember going to church and vespers (and being totally bored by the preachers) at a site near the Moyer cottage.



My earliest memories of him are at church where (I thought) he was always singing off key. Back then he was already one of the first trans- Atlantic commuters alternating between teaching in New York and Germany. His "Manifest Destiny" speech delivered to the county historical association, in July of 1977, in Social Hall contained a clear history of Paradise Falls and its environs all the way back to the turn of the century and forward to the 1970s. His ending remark to the unknowing audience was a "thank you for visiting us in the hayloft of the Haller barn".

In the 80's and 90's he would show up on the dock around 5-ish most afternoons in an old robe and take a dip. He always had a view on the Danish kroner and wanted my inputs, I presume to aid his trading activities. Once he found out that I was a senior level management consultant he would quiz me on all sorts of financial/business topics. As I got to know him better, I got to have a huge respect for his perspectives.

Luther is a "musicologist" -a studier of ancient music, but he has many other talents including mathematics and a broad knowledge of European history, which he would frequently pepper his notes with, assuming that we all knew these details. He was a prolific writer. If you Google him, you will find that he authored 252 works in 342 publications in eight languages. And if you take a look, this is not light stuff.

Luther has contributed to PF in many ways but none more important than in the turbulent times of the early 1950's, when the Association for the second time in its history faced bankruptcy. A young Luther (and others) led the so called "revolution of 53" unseating an incompetent board, instituting a new one led by Rev. Naus, and personally rewrote our constitution to its current version. As one of our oldest living member and a huge contributor over many years, I think we owe him a debt of gratitude and a place in our history and traditions.

Kathy Gilbert and her family have a long history of service to Paradise Falls. Kathy began her relationship with Paradise Falls in 1943 when her parents bought a cottage. Then she began living here full-time in 1990. In 1992, Kathy began working as the Association's bookkeeper.

However, bookkeeping was not the only time Kathy worked at Paradise Falls. As a young woman Kathy's job was to man the toll booth on the bridge and collect a quarter from each of the visitors to the Falls. She also waitressed for the Girl's Camp during its last season.

It seems as though service to PF was in her blood, her father, Reverend Alford (Jack) Naus, was President of the Association the year of the 1955 flood. Her mother, Jo Naus Jacobsen, worked in the office where the indoor mail boxes are. She sorted the mail, greeted guests and answered the phones and made sure that the messages got to the cottages because we had few phones back then.

As with several members of Paradise Falls, Kathy has many relatives that have owned cottages over the years, or are current members. Her Aunt Betty and Uncle Joe Clifford owned two cottages, the one presently owned by David Zimmerman on Laurel Lane and the one owned by Fred Masenheimer. Her husband's family, the Gilberts, lived in the White Cottage for many years. Kathy's Naus and Clifford kin still reside at Paradise Falls.

Her favorite memories of growing up in Paradise include picnics at the falls, reading on her front porch or sitting on the bench near the falls. She and her teenage gang, Jinny Ammon Warburton, Nancy and Carolyn Heydt Pohl, Marty and Sunny Acker and the waitresses and "handy" boys from Nestledown spent the days swimming at the falls (now a No No) and crossing the lake each day to hang out on the old Army Raft in the middle of the lake. The beach was full of young people because many mothers were at Paradise Falls all summer, giving the kids many weeks of fun.

One year, about 1951, the teenagers put on a play entitled, Snow Use. There were also Talent Shows, Square Dances, Fashion Shows – all followed by ice cream cones in the Coffee Shoppe. Church services were always special because a different Pastor would preach each week. She has fond memories of the opening and closing picnics, the Hymn Sing, the Ammon Sisters' annual historic slide presentation and especially the candle light service, which closed every season.

Kathy recalls picnics on the deck that her father built from flag stones found in the woods in 1950. Those same stones now make up the fish pond that she and her long-time partner, Phil DeRea enjoy today. When Kathy thinks about seeing her children, Jen and Jeff, come to know the joy of growing up at Paradise Falls while making lasting friendships and then seeing their children, Sam, Brian and Natalie, spending time in such a special place, she can't help but think, "How can we not be grateful for these many blessings?"



Carolyn Heydt Pohl, daughter of Hilda and Harold Heydt, was born and raised right here in Paradise Valley. In fact, she was born on Paradise Fall grounds. She was delivered by Dr. Nina Price at home in the Sunset Cottage (currently owned by the Olson family across from the top of Beach Road.) Her father, Harold, was the caretaker here at Paradise Falls for many years and was also the builder of at least 13 of our cottages. When we had our own post office, her mother, Hilda, was the postmistress.

Carolyn's family, which included four other sisters, spent the winters living in Gate Lodge. She has many memories to share about those early years. Her children, David and Jo Anne always spent their summers here. Jo Anne is now a permanent resident of Paradise Falls.

Carolyn is very familiar with the people and history of the local area as well as with Paradise Falls history. She loves living in her log cabin and observing life in the woods through the changing seasons.

Carolyn has been a faithful member of our association and the Ladies Auxiliary. She is a fan of sunny afternoons at the beach and social evenings with friends. Anyone who knows her will agree that she loves to tell a good story and share a hearty laugh. She is forever young in spirit because she was born on February 29, Leap Year Day. Carolyn is one of our Paradise Falls treasures.



Pastor Paul Reisch, better known as Paul, first started coming to Paradise Falls in 1961. He had heard about Paradise Falls through his wife Kitty who had come here one season as a child in 1934 and stayed in what is now Kathy Gilbert's home. But as a Lutheran pastor, and a father of four children, the prices at Paradise Falls were too steep to buy a membership, so he and Kitty rented and spent eight happy summers in what are now the Moyer's home, and the Fancher's home. But, in 1970, Clara Klee's membership was for sale, and as God always provides, the Reischs' had exactly the right amount of money needed, and purchased her membership!

Being a full time pastor Paul would come to Paradise Falls after church services on Sunday, and then return on Monday evening while Kitty spent the summers here with the children. Paradise Falls was their home away from home till Paul retired, and both he and Kitty moved here full time.

But the reason Paul is being honored tonight is not because of his pastoral ministry, or length of time spent at Paradise Falls, or for how welcoming he and Kitty were to Paul and I when we arrived, but for his commitment to keeping Paradise Falls serene and beautiful.

Although Paul has volunteered and served on the Paradise Falls Lutheran Association Board as treasurer for many years, religion chair for many years, and as a committee member for many years, AND I might say, continues to attend every Board meeting even when he is not on the Board, Paul has been instrumental in engaging Paradise Falls in the greater community. Paul, with John Kirk's encouragement, stepped up to the plate and got involved with "Pro Paradise" a group organized to prevent a quarry from starting just down the road. Can you imagine what Paradise Falls would be like if a quarry had opened? If we think Paradise Valley Road is busy with cars now, can you imagine the same road with many trucks and the sound of quarrying of stone filling our ears??

Until recently, Paul was extremely engaged in the greater community, but has stepped down from leadership responsibilities and as liaison to our township. We have Paul Reisch to thank for the beauty and serenity we can still experience at Paradise Falls because of his commitment, hard work, vision, and grace. Paul is a role model for us all, which is why we honor him tonight. Thank you Paul!



—This is for my Mommom, without whom I would not know Paradise.

Although Bob Bauers is the oldest living member, and Carolyn Pohl has been a part of Paradise Falls for a long time, my grandmother has been the member for the longest amount of time. She has been coming to Paradise since she was born in 1930.

It all began in the late 1920's, when her grandparents, Martin Luther and Mary Edith Koons, built their house, which is more commonly known as "Koon's Hollow". Later, their eldest daughter, Alberta and her husband William Ardell (my great grandparents) inherited Koons Hollow. While Alberta's younger sister, Ester and her husband George Ney were given the Pine Cone Cottage across the street. Mommom spent much of her childhood in the Poconos; she even attended the girl's camp. Mommom continued coming to the Poconos throughout her married life. When she was first married, had her first child (Debby) and was expecting her second, she experienced the flood of 1955 first hand. She and a friend, who also had a young child, were staying at Koon's Hollow and the power went out. She recalls having to walk up 191 to the candle shop. Once all of her children (Debby, Donna, Diane, Dayle & George) were born, they would come to stay in August. These were the years when Mommom spent her time trying to sneak down to the Falls, with Carolyn Pohl, to scare the boys who were camping out.

It wasn't until 1968 when Barbara and George purchased a membership with three lots on the hill. However, they didn't build their house until the early 70's. Although her children were not small anymore, they still have many memories at the yellow house on the hill. When my grandfather came up on the weekends, there was always a party at his cottage, even when Mommom didn't feel like hosting. As her children grew and they began to have their own children, Mommom would spend the summers entertaining her grandchildren for weeks at a time. Eventually, I began to come and stay with my grandmother for the summer. Every summer is a different adventure, between the bridge tournament with Wilma Kunhle, and Fred and Carole Stumpf and the many other entertaining nights. I learn something new every year about Paradise from my grandmother. She has told me about the gas station, the old "Tea Room", Nestledown, and many other features we no longer have.

Although Mommom still enjoys the many parts of Paradise Falls and the wonderful memories it holds, her favorite thing to do now is to sit on her back porch, feel the breeze from deep in the forest and listen to the children having fun on the beach. Barbara has spent many years in Paradise and she plans to spend many more years here. It's important because she is a big piece of Paradise Falls to me, my family and many other people.



Born on August 19, 1923 in Philadelphia, Meta was the daughter of Friedeich and Alwine (Straumer) Flothmeier. Meta had a lifelong connection with Paradise Falls Lutheran Association where her parents built the family cottage in the 1920's.

A graduate of Gettysburg College, she was a teacher and artist. Meta and her husband, Donald, were Missionaries in China and Japan for seven years. While Donald, was a Chaplain in the United States Navy they lived up and down the east coast and on Malta and Sicily.

After retiring from teaching, she devoted full-time to her water color painting and her paintings brought joy to many people. Meta had a keen eye for color but an even keener wit. With a sparkle in her eyes and a smile on her face, Meta fully participated in the life of the Paradise Falls community.

She served for many years on the Membership and Religious Activities committees, sang in the choir and was a fixture at picnics and other Paradise Falls activities. Meta was pure and simply a special person. Her quiet presence at Paradise Falls will continue to be felt as we gaze upon our Meta Wilson paintings that grace many of our cottages.



Rev. Dr. Arvids Ziedonis

Arvids Ziedonis was born in Latvia and experienced the World War II Soviet and Nazi occupations of his homeland. Before the second onslaught of the Soviet Army, he and his family fled to Germany, where he finished the Gymnasium (high school) and had the opportunity to emigrate to the United States and became a naturalized US citizen. He continued his education and graduated from Muhlenberg College, The Lutheran Theological Seminaries of Philadelphia and Gettysburg, studied at the University of Pennsylvania, and received his Ph.D. from Temple University. In 1958 he married his wife, Zigrīda, who was also a native of Latvia, and served as an ordained pastor in LCA and ELCA churches, as well as in several Latvian Lutheran churches. During this time, Arvids also served Muhlenberg College as professor of Comparative Literature, Russian Orthodoxy, and as director of the very successful Russian Studies Program. Arvids was awarded at Muhlenberg College the honors of alumni achievement for diplomatic relations as a representative of Muhlenberg College.

He was an active member and program chair in New York City for the Citizen Exchange Council for cultural exchanges for promoting understanding and peace among the USA and the Soviet Union. Former President Ford, Joseph Biden, and the ambassador of the United States of America were members of this organization. Arvids yearly hosted Russian and Latvian Church leaders from the Iron Curtain as well as artists and academic scholars from the Soviet Union and Latvia to Muhlenberg College. These political and education visits were held at Muhlenberg College for the entire faculty and students and Allentown community in the spirit of diplomatic relations.

With the fall of Communism in 1991, Arvids was a diplomatic advisor to President Bill Clinton and was on his advisory team to help with the transition of freedom for the Russian and Latvian politics under Russian President Boris Yeltsin. Arvids provided significant political contacts and the understanding of how the Russian and Latvian political dynamics worked for President Clinton.

Pastor Ziedonis was an accomplished speaker within academic circles and for churches in the United States of America, Canada, and Europe during the past forty years. He also was the editor for the Journal of

Written By His Daughter, Dr. Ruth Ziedonis

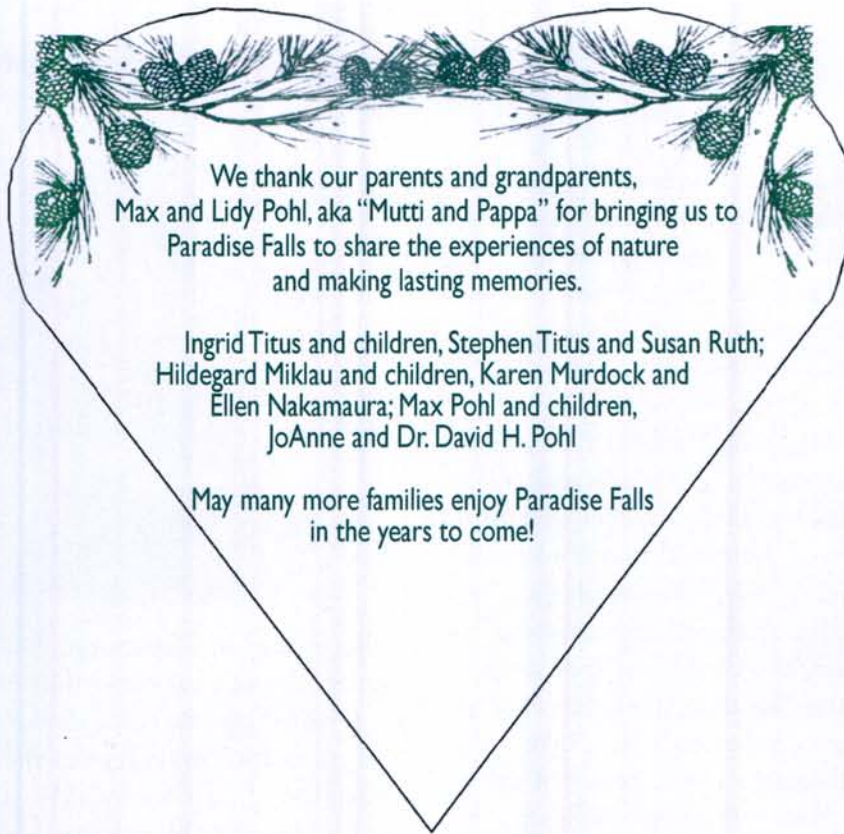


Baltic Studies in Washington, DC and has authored nine academic books over the years. Arvids was also a professor of the theology department in Riga Latvia and also helped to reorganize the seminary under the University of Latvia after 1991.

Arvids maintains his ministry with the Latvian Lutheran Church in America and Latvia. Throughout his 54 years of Ordained ministry, Arvids has built and developed under his leadership two ELCA congregations and building programs to create new Churches. His first building program and church is in Bethlehem, PA St. Paul's ELCA, and his second church building program was in Orefield, PA, Morgenland Lutheran Church ELCA.

In 1970 the Ziedonis family, including their three children, Douglas, Ruth and Eric became members of Paradise Falls Lutheran Association with the purchase of the Rev. Klaus Molzahn cottage. Arvids served on the Board of Directors first as Treasurer, then as President in 1988-90. During his tenure, the Board updated the PF Constitution and Bylaws and the writing of and worked on the 'non-discrimination clause' of the PF manual. Afterward he worked together with others on the Long Range Planning Committee and served for many years as chair of the Religious Committee and the Property Committee.

Dr. Ziedonis now enjoys his ministry with the ELCA and Latvian Lutheran Churches as well as year round living at Paradise Falls with his wife Zigrīda and his grown children Ruth and Eric. Some of Arvids' hobbies include nature walks, reading, music, family and friends.



We thank our parents and grandparents,
Max and Lidy Pohl, aka "Mutti and Pappa" for bringing us to
Paradise Falls to share the experiences of nature
and making lasting memories.

Ingrid Titus and children, Stephen Titus and Susan Ruth;
Hildegard Miklau and children, Karen Murdock and
Ellen Nakamaura; Max Pohl and children,
JoAnne and Dr. David H. Pohl

May many more families enjoy Paradise Falls
in the years to come!

In memory of Meta Wilson, whose laughter
and smile are missed, and in honor of our
friends and card-playing buddies,
Kitty and Paul Reisch and Ruth Mitchell.

We love you all,

Lisa and Paul Fancher

Paradise Falls is our sanctuary and one of the many
blessings in our lives. It is something that we will never
take for granted. Thank you to everyone that works to
maintain and preserve our beloved Paradise Falls.

Jane and Bill

Happy 90th to our Paradise Falls Friends



Patrick J. Connor, CLU, ChFC
Financial Services Professional*



New York Life Insurance Company

Licensed Agent
Box 1280 Paradise Falls
Cresco, PA 18326
Tel. 570 730 4391 Fax 570 343 0617
pconnor@ft.newyorklife.com

*The Company You Keep**

**Callie's Candy Kitchen
and
Callie's Pretzel Factory**

Rt. 390, Box 126
Mountainhome, PA 18342
(570) 595-2280
Gretchen Callie Reisenwitz
President
1-800-252-7780

Rt. 191 & 390, Box 395
Cresco, PA 18326
(570) 595-3257
Mark Reisenwitz
Vice President

www.calliescandy.com/Email: info@calliescandy.com
Harry and Carol Callie: Owner

Congratulations PFLA on your 90th Anniversary!

Lewis' SUPERMARKET

Route 390 PO Box 585
Mountainhome PA 18342
570-595-7161
Deli 595-FOOD
lewismarket.com

*Best Wishes to Paradise Falls Lutheran Association
on your 90th Anniversary*

Capri Restaurant & Deli
(670) 595-2500



1127 Route 390
Mountainhome, PA 18342

To our friends at Paradise Falls,
Congratulations on your 90th Anniversary.