

HISTORY #1

Documents

PARADISE FALLS LUTHERAN ASSOCIATION

Operating Paradise Falls, a Resort with 550 Acres in Paradise Valley

HONORARY PRESIDENT
REV. F. H. KNUBEL, D.D., LL.D.
JOHN G. BORGSTEDT, PRESIDENT
3230 THIRD AVENUE
NEW YORK CITY
REV. HARVEY S. KIDD, VICE-PRES.
SOUDERTON, PA.

NEAR HENRYVILLE, MONROE COUNTY, PA.
P. O., CRESCO, PA. R. R. STATION, HENRYVILLE, PA.

PARADISE FALLS, PENNA.

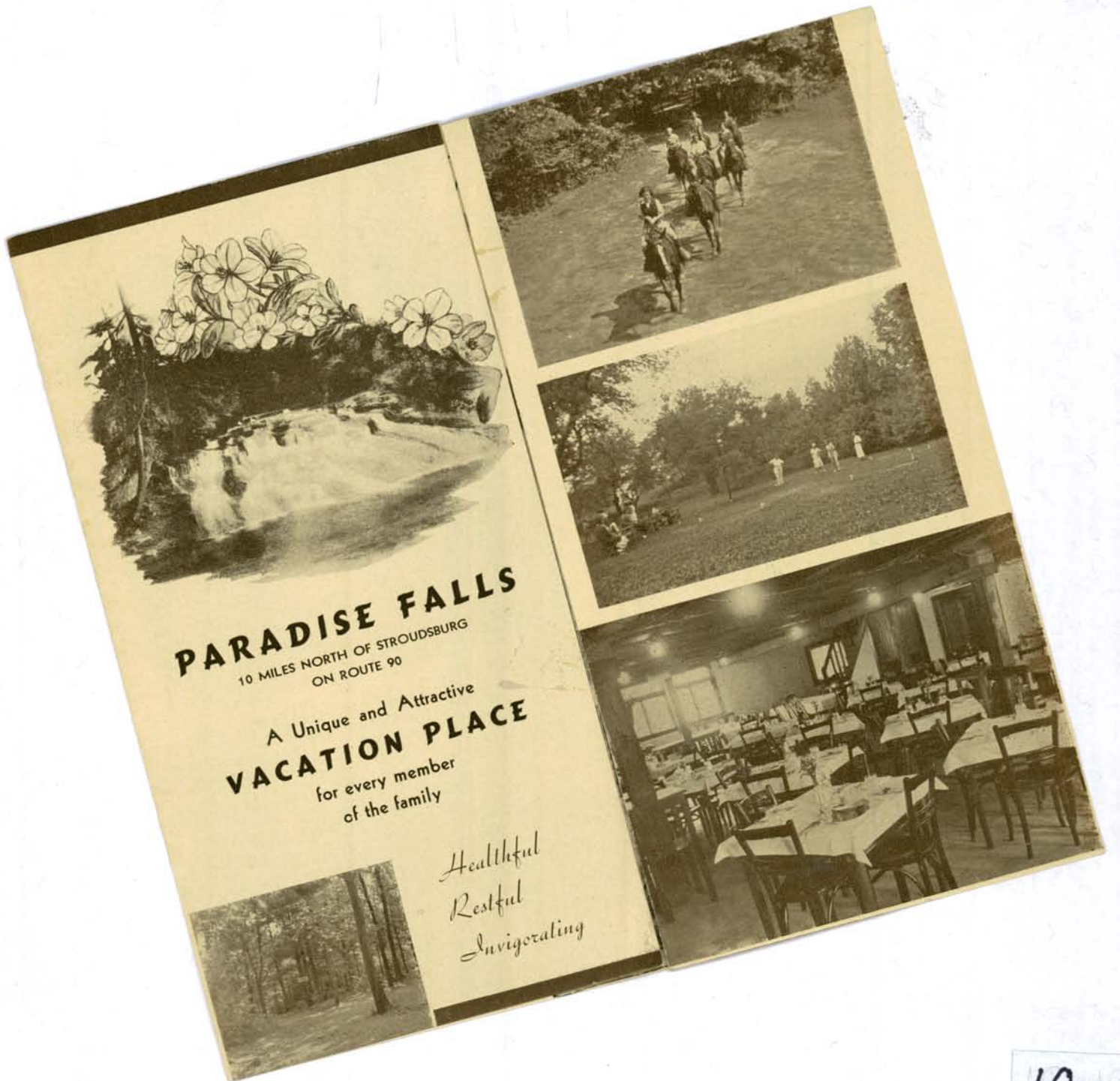
REV. HARRY P. C. CRESSMAN, SEC.
1817 E. GREENLEAF STREET
ALLEN TOWN, PA.
ERWIN W. MOYER, TREASURER
3828 N. EIGHTEENTH STREET
PHILADELPHIA

DEPOSITORY
STROUDSBURG TRUST CO.
STROUDSBURG, PA.



HISTORY I

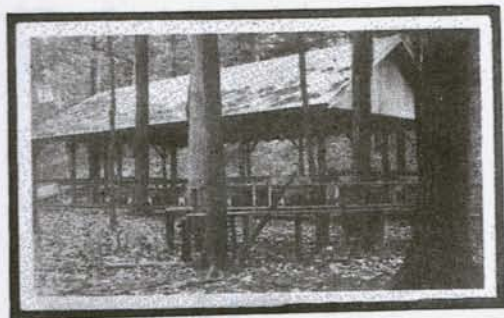
OUR BROCHURE PF STORY



HISTORY I - OUR BROCHURE PF STORY

This first History I binder uses our archive collection of brochures to tell the early story of Paradise Falls. They were originally written to advertise and inform PA, NJ, and NY Lutheran Church members about a guest and cottage resort forming in PA's Pocono Mts.

Today, these brochures (meant for church bulletin boards) serve to also give us a word and picture tour of P.F.'s early days. A lack of dates and reuse of old photos compromise some accuracy, but still provide a unique perspective on how a dream evolved into an appreciated reality



Bring your Sunday School
class for a day's outing
in the Grove at
the Falls

♦ ♦

Picnic Parties Welcome
(weekdays only)

- These PFs "milestone dates"
- 1922-23 Meetings, incorporation
 - 1924 Nestledown remodeling, store
 - 1926 Gate Lodge/Falls ownership
 - 1928 Soc. Hall, Brown-White Cott.
 - 1929 Crash, pond swimming
 - 1931 Cement Hwy, Tea Rm Gas Station
 - 1931-52 Girls Camp operation
 - 1939 Lake dedication
 - 1942-45 U.S War Years
 - 1952 Nestledown closes
 - 1955 Hurricane "Diane"
 - 1956 Cottage Colony only

1924 PAMPHLET

Make kitchenette meals
with traveling grocer food
Dirt hwy Henryville to P.F.?!

300 acres

Double room \$5 week

Membership \$100

INTRODUCING

Paradise Valley Lutheran Association which is developing a 300 acre tract as a Summer Place for Lutherans in beautiful Paradise Valley, Pocono Mountains, 10 miles north of Stroudsburg, Monroe County, Pennsylvania.

Post Office—Cresco, Pa., R. F. D.

Honorary President, Rev. F. H. Knubel, D.D., LL. D.

President of the United Lutheran Church.

President, Mr. Wm. F. Buckner, 8944 196th St., Hollis, L. I., N. Y.

Treasurer, Rev. J. E. Rudisill, Rieglesville, Pa.

Secretary, Rev. Clifford E. Hays, 5410 Springfield ave., Philadelphia, Pa.

Summer address—Cresco, Pa., R. F. D.

Our Motto—

“Come ye yourselves apart..... and rest awhile”. Mark 6:31.

THE HISTORY OF THE ASSOCIATION

The Call

Some years ago one of our Philadelphia Lutheran laymen came to Paradise Township badly broken in health. The quiet, air and water of the mountains soon restored his vigor. He became enamoured with the section and purchased a number of tracts so that he had a 242 acre farm of woodland, open fields and stream. As he continued to enjoy the benefits of the mountain he longed to see his fellow churchmen sharing them so he spoke to Dr. Geo. W. Sandt, editor of The Lutheran offering land for the creation of a Lutheran Summer Colony if there was a desire on the part of the Church folk for such. Dr. Sandt made the announcement in an editorial on May 4, 1922 inviting correspondence from all interested.

The Response.

Several Lutherans from Philadelphia and New York responded. These met with Dr. Sandt and the owner of the farm at the farm. After viewing the ground they gladly accepted the offer and made plans for the creation of an association to take title to the land.

Another Call was made through The Lutheran. Twenty three Lutherans met at the farm on October 17, organized by electing officers and formally accepted the offer of the ground.

Our Aim.

The Association proposes incorporating as a non-profit sharing corporation with membership open to Lutherans of all synods. This membership gives one a voice and vote at the annual meeting and a perpetual lease on a plot of ground 100x125 feet on which to construct a summer home. The membership may be assigned or sold to another Lutheran. This will enable Lutherans of moderate means to have summer homes in this beautiful, healthful region. The cost of construction is lower here than in many places. A bungalow for summer use 28x30 feet with sixty feet of porch seven feet wide, a living room 12x14 feet, two 9x10 bedrooms, kitchen 8x10, bath and store rooms, can be built for from \$1500 to \$1700 depending upon the inside finish.

We hope that in time there will be homes for our missionaries, deaconesses and orphans to enjoy in the summer. There are also splendid sites for both boys' and girls' camps.

Cost of Membership.

A membership at this time costs but one Hundred dollars (\$100.00) payable in cash or in ten monthly installments of Ten Dollars (\$10.00) each. That is all one pays to get the choice of a lot 100 x125 feet. There will probably be annual dues of a very nominal sum to cover the taxes and other expenses. We hope to keep this within \$5 or \$10 a year and with the returns from the sale of bathing, boating and fishing privileges on the lake and the sale of ice together with the sale of sand and gravel from the large bank on the grounds we may be able to eliminate the dues entirely.

Our situation, 1500 feet above sea level, gives us pure air, cool breezes and glorious scenery. There is a profusion of lovely wild flowers and birds of many kinds nest here. Hunters will find plenty of game, both large and small, in these mountains.

Accessibility.

One of the best features of our place is its accessibility by rail road and highway. The main line of the D. L. & W. R. R. from New York to Scranton passes on our eastern boundary. A summer stop can be arranged. The nearest regular stop is Henryville Station, one mile south.

Paved and surfaced highways lead to this section from all directions running through some of the most scenic places of the east. The State Road from Stroudsburg to Paradise is our western boundary. It is well surfaced.

1924

1924 - first bungalow built
Cranberry Ck will be dammed for lake?!

10 Nestledown Bedrooms
by Aug 1924

We are located within easy reach of a large Lutheran constituency. The distance from the main cities are as follows: New York City, 94 miles; Albany, 155 miles; Scranton, 35 miles; Wilkes-barre (via the Trail) 54.5 miles; Mauch Chunk, 40 miles; Sunbury, 120 miles; Bethlehem, 41 miles; Allentown, 46 miles; Reading, 81.9 miles; Lebanon, 109.7 miles; Harrisburg, 124 miles; Lancaster, 116.1 miles; York, 134.9 miles; Easton, 44.5 miles; Philadelphia, 100 miles; Baltimore, 199.6 miles.

Your Opportunity

The possibilities of this colony are beyond mere words. We have ground enough for over eight hundred members and room for unlimited expansion. In every congregation of the larger towns and cities there are Lutherans who will be glad for this opportunity for a summer place amid such natural glories and with those of congenial spirits. Will you help establish this Lutheran resort and playground? Even if you have a summer home elsewhere enroll as a member and help boost this development.

We have been soliciting membership since May 1924 and already there is a splendid response, new names being enrolled weekly. Among this number are such leaders of the Church as Dr. F. H. Knubel, President of the U. L. C.; Dr. W. H. Stutts, Brooklyn, N. Y.; Rev. Ivan Heft, North Bellmore, L. I.; Rev. Wm. L. Katz, Yonkers, N. Y.; Rev. Carl H. Miller, Freeport, N. Y., Rev. Robert H. Ischinger, Allentown, Pa., and Dr. A. Pohlman, Philadelphia, Pa.

CHOICE OF LOT

Members are entitled to their choice of lot according to their numerical position on the roster. The owner of the farm who gave us of his ground has a 5000 gallon reservoir supplied by a 200 ft. well. The reservoir is higher than our adjacent ground some of which is cleared and some wooded. He has given us the privilege of tapping his reservoir to pipe water to the bungalows.

The ground so situated will soon be laid off in plots and members will take their choice according to number. We plan laying the mains to this section either this fall or next spring.

The first bungalow will be built this year and several more members plan to follow suit. What will you do? Come in now when the membership fee will mean so much in getting the development under way and when you have the choice of lots.

THE GROUNDS

We have over 300 acres of hills and valley situated 1500 feet above sea level in Paradise Valley along the State Road, ten miles north of Stroudsburg, Monroe County, Pennsylvania. One of the best trout breeding streams—the Cranberry Creek—flows through the grounds for about one and one-quarter miles. This flows through a flat basin with steep hills on either side offering a splendid site for a lake of from 15 to 25 acres by constructing a dam 14 feet high. This will be stocked with fish from the hatchery nearby. Members will have free access to bathing, boating and fishing, but a charge will be made to others. A large, unfailing spring will furnish water which will be pumped to high ground above it and piped from there to the cottages. An overshot wheel at the dam will furnish power for generating electricity at a low rate.

ACCOMMODATIONS

The Secretary is summering on the grounds and will be glad to show interested parties about. He will provide conveyance to and from the grounds for any coming by rail to the Henryville Station. Make arrangements several days in advance by writing him at Cresco, Pa., R. F. D.

There are hotels and boarding houses within a mile of the grounds but in order that those interested may spend some time seeing the place we are converting a large barn on the grounds into a Community House. This will have nineteen bed rooms 9x12 ft. with large, screened casement windows, a launing hall 15x30 ft., two large porches, a cold storage room for food 8x30 ft., a common dining room 19x33 ft., and a kitchen 16x28 ft. which will be divided into kitchenettes; and two garages with a capacity for four cars. The House will be furnished comfortably for summer.

We will rent one or more bed rooms to a family or party at \$5 per room for two per week or \$1 per room for two per day. This gives them a kitchenette equipped with oil stove, cooking utensils and a set of dishes with the use of a family table in the common dining hall, and free use of garage space.

We will have ten bed rooms ready by August 1924. Those desiring to run up to see the grounds will find the House very convenient. Those desiring a healthful vacation will find it delightful. Milk can be had for 10 cents per quart and the butcher, baker and huckster will stop at the House from three to six times per week. Come to the hills and enjoy the summer.

Any further information will be gladly furnished by the officers of the Association.

member names

1927
"GLIMPSES"
BOOKLET

group activities

1 pg info, 3 pgs maps (aerial, driving, railroad, PF lots)

7 pgs natural settings, paths, streams

flowers

PF buildings

hikes

Cover - earliest viewing bridge at left side of Falls
↓
later replaced with above and below the falls bridges, capable of holding more people.



PARADISE FALLS is a tract of 500 acres situated in Paradise Valley, near Henryville, Monroe County, Pennsylvania, owned and operated as a resort for Lutherans by the Paradise Falls Lutheran Association.

Those who desire healthful rest, out-of-doors sports and wholesome fellowship in a region of unsurpassed beauty, noted for its invigorating atmosphere, are offered membership in the Association which gives them among other privileges the choice of a lot 100 x 125 feet on which to erect a dwelling. Use the inserted application Blank if you desire a Membership. Only one membership can be held by any individual, but each member of the Lutheran Church is privileged to hold membership.

Those who desire to enjoy the benefits of Paradise Falls but who do not want membership in the Association are offered guest privileges at Nestledown, the community house, where room and board may be secured at moderate prices.

If you are interested in Paradise Falls through the Glimpses at its beauties and activities which these pages reveal, write for Facts about Paradise Falls, a pamphlet which describes the Origin, Growth and Method of Operation of the resort, and for the Announcement of Nestledown's Third Season.

Board of Directors

REV. F. H. KNUBEL, D.D., L.L.D.
437 Fifth Ave., New York City
Honorary President.

WM. F. BUCKNER, *President*
8944 196th St., Hollis, N. Y.

LUTHER S. HOFFMAN, *Vice President.*
East Stroudsburg, Pa.

REV. JACOB E. RUDISILL, *Treasurer.*
3515 North 8th Street, Philadelphia.

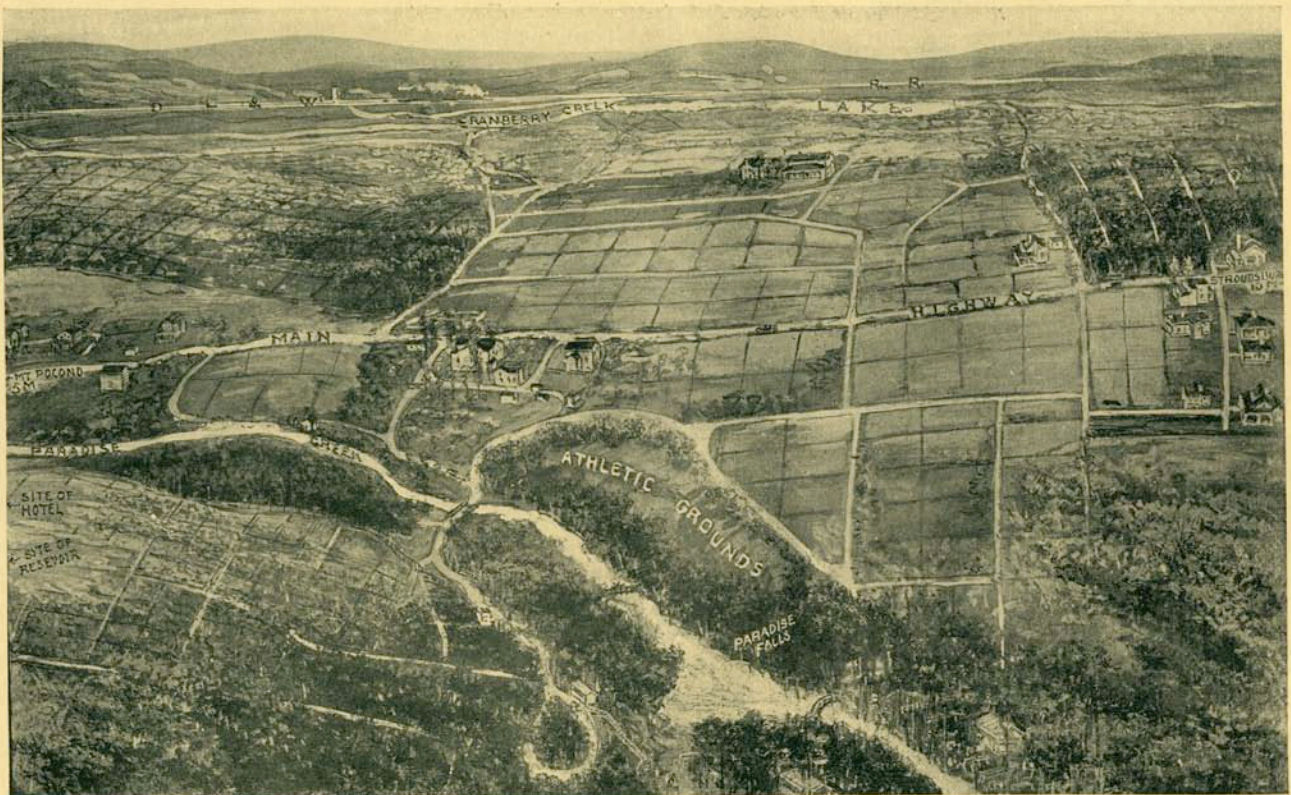
S. W. FALES, Philadelphia, Pa.
REV. H. W. FITTING, Quakertown, Pa.
H. C. HEMPEL, Hollis, N. Y.

REV. H. S. KIDD, Souderton, Pa.
P. L. LARSON, Philadelphia, Pa.
E. CLARENCE MILLER, Philadelphia, Pa.
REV. C. H. MILLER, Freeport, N. Y.

F. W. MUELLER, Philadelphia, Pa.
P. D. SPAETH, Drexel Hill, Pa.
REV. W. H. STUTTS, Brooklyn, N. Y.

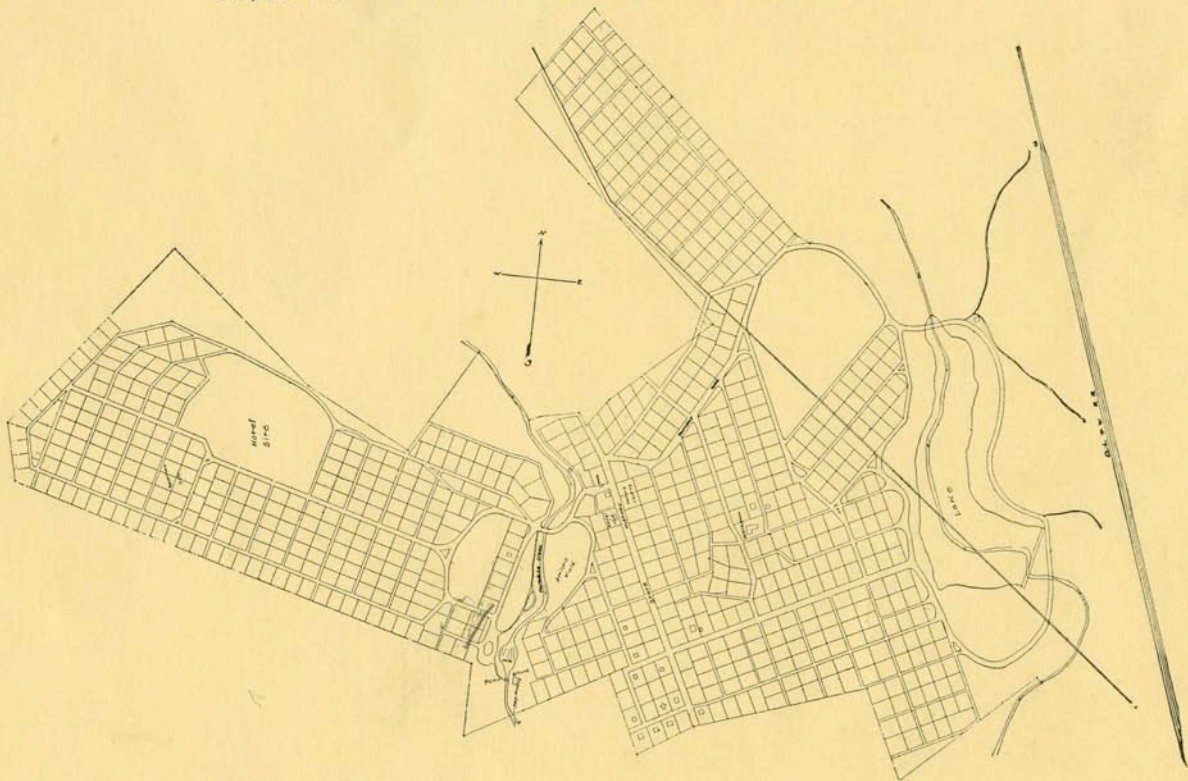
Address all communications to

REV. CLIFFORD E. HAYS, *Secretary-Manager*
5410 Springfield Ave., Philadelphia, Pa.

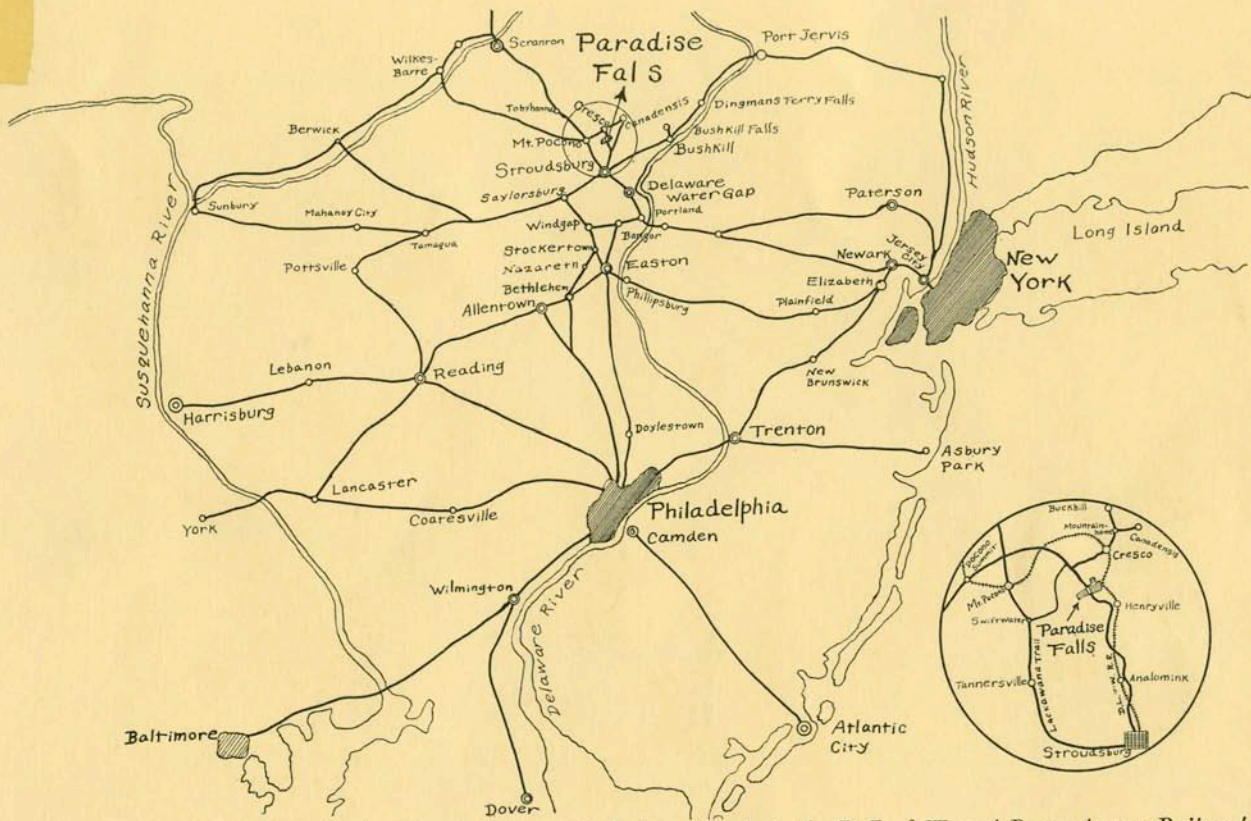


The artist has shown the greater part of the 500 acre tract and the plan of development.

Proposed Plan of Paradise Falls Lutheran Assn. Property.



Engineer's map showing the road system, lots, lake, hotel and reservoir sites, location of cottages, etc.



Paradise Falls is reached via hard surfaced and concrete highways and via the D. I. & W and Pennsylvania Railroads.



Approach to the Falls.



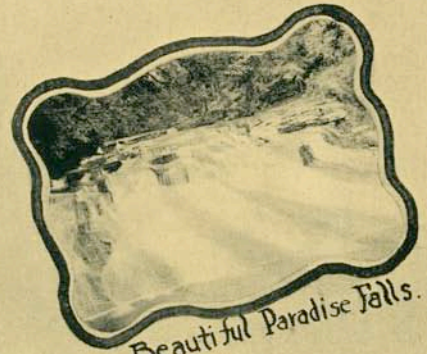
Rapids above the Falls.



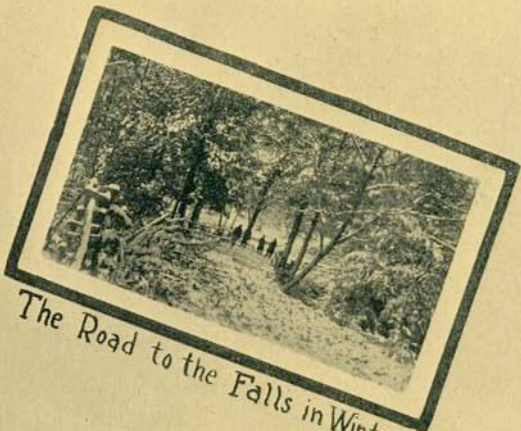
The Upper Bridge



Paradise Creek below Falls



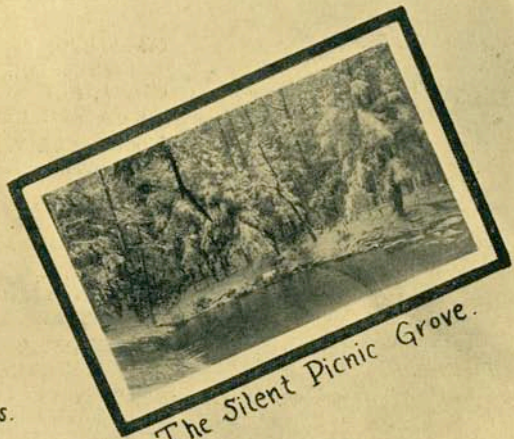
Beautiful Paradise Falls.



The Road to the Falls in Winter.



*The Glory of the Poconos.
The Great Rhododendron.*



The Silent Picnic Grove.



Mountain Laurel.



Paradise Creek in Winter.



Wild Honeysuckle.

Paradise Falls is beautiful in all seasons.

WE, THE MEMBERS OF PARADISE FALLS LUTHERAN ASSOCIATION, INVITE

Allentown, Pa.

Rev. Wm. L. Katz.
Rev. J. H. Raker—5.
Miss Caroline E. Trump.

Altoona, Pa.

✓ Rev. Jacob Flegler.

Ambler, Pa.

Mrs. M. K. Harr.

Ardmore, Pa.

Samuel R. Henry.
Wesley J. Ohl—2.

Baltimore, Md.

John R. Lemmert—3.

Brooklyn, N Y

(see *New York and Long Island*)

Coatesville, Pa.

Gustav A. Luebert.

Drexel Hill, Pa.

Philip D. Spaeth—3.

Dunellen, N J

Miss Frances E. Richter.

Easton, Pa.

Peter S. Walters.

East Stroudsburg, Pa.

Luther S. Hoffman—2.
Prof. E. E. Kuntz.

Elizabeth, N J

James A. Reed.
Rev. S. H. Rudisill.

Gibraltar, Pa.

Miss Sallie D. Seidel.

Glenside, Pa.

Raymond G. Ellis.

Gloucester City, N J

Rev. Werner Jentsch.

Harrisburg, Pa.

Miss L. Frankem.
Miss Christine McCormick.

Hoboken, N J

Mrs. Emma Muth.
Mrs. Anna Weidner.

Jersey City, N J

✓ Rev. F. Brezinski.—2
Miss Ida Bauman.
Miss Sarah Bauman.
George E. Sjauken.

Maplewood, N J

Rev. Christian F. Voehringer.

Mauch Chunk, Pa.

✓ E. F. Kuntz—4.
Miss Anna K. Stahl.

New York and Long Island.

New York City.

Mrs. Emma Busch.
Henry A. Dahlen.
Mrs. Etty W. Engle.
Rev. F. H. Knubel.
Miss Mary E. Markley.
Rev. F. E. Oberlander.

Brooklyn

John B. Berger.
Miss Anna Berman.
Howard E. Brace.
Misses Margaret and Dorothy Burns.
Joseph C. Dittmer.
Miss Wilhelmina Dryer.
Mrs. Henrietta E. Evers.
✓ Chas. P. Faber.
Oscar G. Heyen.
✓ Rev. D. G. Jaxheimer.
Charles Keller.
Miss Anna Mahler.
Miss Eda Mahler.
Miss Elizabeth L. Mammen.
Miss Margaret Moller.
Mrs. Wm. Rademacher.
Wm. Schneider.
Philip Schoening.
Rev. Wm. H. Stutts.
Miss Anna Tienken.
Miss Florence Tienken.
Miss Louise A. Vogt.

Freeport

Rev. Carl H. Miller.

Flatbush

Mrs. Luther D. Gable.

Floral Park

John Henigin, Jr.—2.

Hollis

H. Becker.
✓ Wm. F. Buckner—2.
Miss Amanda Framme.
Rev. Arthur S. Hardy.
Henry C. Hempel—4.
Mrs. Elizabeth C. Heeg.
Mrs. Hulda Kautz.
Elmer E. Keller.
Alex Kurmes—3.
Herbert C. Matz.
Henry Merkle.
John C. Pfeiffer.
Geo. Seeth.
Miss Anna Seeth.
Ralph H. Van Houten—2.

Jamaica

Luther League, Church of
Our Saviour.
Henry J. Wehle—2.

Lynbrook

Rev. E. W. Hammer.

Richmond Hill

Herman Kramer.
Miss Lucie Lammers.
Miss Adelaide H. Sjauken.

Rosedale

Winfred P. Elson.
Mrs. Wm. Freas.
Rev. G. Lynn Kieffer—2.

YOU TO JOIN US IN THE DEVELOPMENT OF THIS LUTHERAN CENTRE

Staten Island

Rev. Tryger O. Lovaas.

South Ozone Park

Sanford Engstrom.

Woodhaven.

Rev. Paul Y. Livingstone.
Mrs. Adeline S. Meyer.

Norristown, Pa.

Miss M. Winifred Field.

Orwigsburg, Pa.

Hiram G. Leymeister.
Rev. Wm. Masser.

Passaic, N J

Rev. Paul E. T. Lemke.

Philadelphia, Pa.

H. Winfred Beal.
August Bein—2.
Dr. Julius E. Blechschmidt.—2
Frank M. Boeshore.
Wm. P. M. Braun.
Rev. Frank M. Brown.
Rev. Edwin Heyl Delk.
Miss Marie Diehl.
F. H. Eberly.
Miss Delma V. Elson.
Mrs. Sarah W. Etris.
Samuel W. Fales—2.
Miss Edith E. Fales.

✓ Rev. Emil E. Fischer—2.
Rev. F. R. Flothmeier.
Rev. R. H. Gearhart, Jr.—2.
Albert E. Griggs.
Miss L. Romaine Gross.
Adolph Gruber.
Miss Barbara Gruber.
Miss Louisa W. Gruinger.
Peter P. Hagan—2.
✓ Rev. Clifford E. Hays—4.
Misses Bertha and Louisa
Heid—2.
Rev. Wm. F. Herrmann.
Charles A. Hunsberger.
H. H. Hunsberger.
Andrew H. Jeffries
Wm. H. Jenkins—2.
George Katz.
Mrs. Walter Kennedy.
Harry J. Knoll.
Martin L. Koons—2.
Paul L. Larson.
C. J. Laubach.
Miss Esther Lee.
Miss Eleanor Marshall.
Louis C. Metz.
Tadafumi Mikuriya.
E. Clarence Miller—2.
Mrs. Kate B. Mills—2.
Miss Clara F. Minnich.

Erwin W. Moyer.
✓ Frank W. Mueller—5.
✓ Miss Nora R. Ohl.
Misses Mary and Louisa Paulus.
Mrs. C. Fredericka Pfander.
Rev. August Pohlman—3.
W. E. Recher.
Miss Marie Roeth.
✓ Mrs. Clara P. Rossman—3.
Rev. J. E. Rudisill—2.
Mrs. Katharine L. Schaner.
Miss Alice Seltzer.
Henry F. Seltzer.
John M. Seltzer.
Rev. Albert Shumaker—2.
Dr. Anna E. Smiley
Emil P. Stahl.
Mrs. Kate L. Stallman.
Mrs. S. Louise Steinbock.
Miss Margaret Strauss.
Mrs. Marion S. Terry.
Rev. Erick F. Voehringer.
Charles L. Wilbar.

Quakertown, Pa.

E. Richard Acker—2.
✓ Mrs. Annie J. Fisher.
✓ Rev. H. W. Fitting—2.
Henry L. Shelly—2.
Howard L. Stoneback.

Rahway, N J

Wildy V. Singer.

Reading, Pa.

Custer Ammon.
Miller C. Ammon.
Miss Louise H. Barron.
Misses Sarah and Emma Bechtel.
Miss Meta Hepler.
Garson M. Huyett.
Rev. Robert H. Ischinger.
George M. Jones.
Francis F. Seidel.
Trinity Lutheran Church—2.

Schuylkill Haven, Pa.

Miss Katherine M. Schneider.

Sellersville, Pa.

Miss Margaret Neidig.

Souderton, Pa.

H. S. Hallman—5.
✓ Rev. H. S. Kidd—6
Mrs. Catherine Zendt.

Springtown, Pa.

Roland M. Stoneback.

Summit, N J

Miss Ida Schaefer.

Trenton N J

✓ Miss Florence Z. Logan.
Mrs. Elsie Tomb.

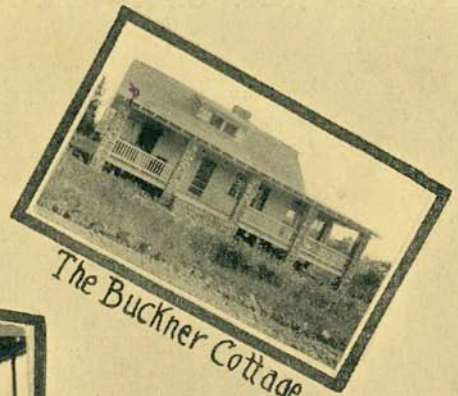
The numerals after the names indicate the number of Memberships held by the family.



The Spickler Cottage.



Kidd-Napp



The Buckner Cottage



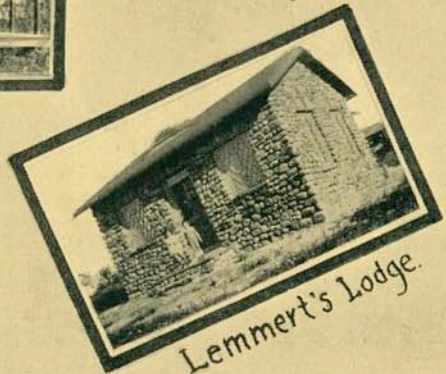
Primrose



Eureka Cottage



Koon's Hollow.



Lemmert's Lodge.

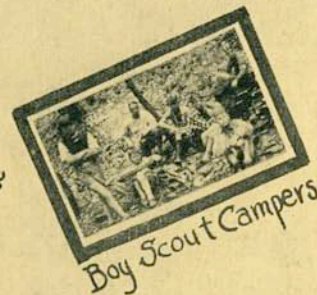
Some of the cottages erected by members.



Boy Scout Visitors.



NESTLEDOWN, The Community Boarding House



Boy Scout Campers



Camp Fire Girls Camp



Happy, Safe Days.



Camp Fire Girls.

Out of door life at Paradise Falls offers many forms of recreation.



A Nature Study Hike.



The Hiker's Delight.



A Hiking Party at Red Rock Falls.



A Morning's Catch.



Cranberry Creek.



Eight to Fourteen inch Trout.

Hiking, nature study, fishing, bathing and hunting are favorite pastimes.



A Joy for Motorists



New Concrete Paradise Valley Road.



Our Station and Touring Bus.



A Lovely Spot along the Road.

State Highway →



← A Road Sign.

The Bus takes guests to the many places of beauty in the Poconos over modern highways.



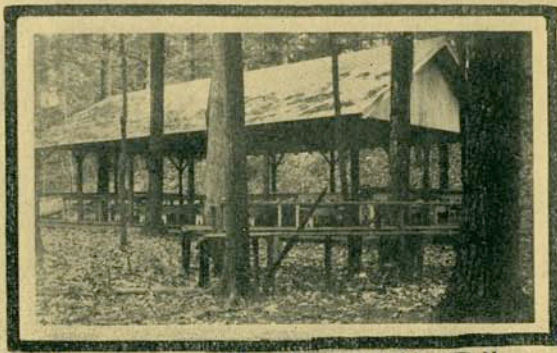
Road to the Falls.



Path to the Falls.



Woodland Path.



PicnicKer's Pavillion at the Falls.

One never tires of the many lovely nooks and corners and grand vistas over the hills.

1927

Greetings

Not in the sense of custom only, but with a genuine appreciation of our pleasant associations during the past year, we extend to you our best wishes for an old-fashioned

Merry Christmas and a New Year Full of Happiness and Prosperity

We also take pleasure in thanking all members and friends who helped make the 1927 season at Paradise Falls so successful.

We are glad to report many improvements made during the season. Ten new houses were erected by the members, making a total of twenty-one. Four new buildings were constructed by the Association and one remodeled, making a total of thirty-six buildings owned by the Association in addition to the twenty-one homes of the members.

Social Hall, with an assembly room accommodating 200 and a commodious porch facing the state highway, added a most enjoyable feature to the colony's life.

A 141-foot well was drilled and supplies most excellent water; roads and water mains were added, too; two attractive and strong bridges were thrown across the creek above and below the Falls; two farms were purchased (one for a golf course adjoining the hotel hill), which gives us a tract of 550 acres, on which are three excellent trout streams.

Work has been started on the lake and plans are being perfected for the construction of a modern, fireproof hotel.

We wish to announce that the Membership Fee will be advanced to two hundred and fifty dollars (\$250.00) on January 1, 1928. Those interested in membership may get full information from

Paradise Falls Lutheran Association

The Lutheran Church House,
39 West 35th Street,
New York City

5410 Springfield Avenue,
Philadelphia,
Penna.

1927

P.F.s first SPRAY (unavailable) was mailed @ March 1927.
This is second, Vol. I, No 2, SPRAY sent June 1, 1927



Published by the Paradise Falls Lutheran Association, Henryville, Pa
POST OFFICE — CRESCO, PA.

Dol 1

JUNE 1, 1927

No. 2

Well, you surely did take off your hats to us when we made our appearance. Cards and letters came, telling of your pleasure and appreciation. We return the compliment and bow low in acknowledgment of all kindness shown. We hope this cordial relation will continue and that it will be our privilege to spray you with news of Paradise Falls for many years.

And we received more than kind wishes. Within a few days we were offered a cabinet organ by Mrs. S. Louise Steinback, 2327 North College Avenue, Philadelphia, one of our members. Later, another was offered, but we have use for but one.

We also wish to gratefully acknowledge the gift of fifteen volumes of "The Geographic Magazine." The donor is Mr. Carl F. Haussman, 6348 Ross Street, Philadelphia. These have been bound in attractive volumes for our library.

And we also say "Thanks" to Miss Nora Ohl, 826 South St. Bernard Street, Philadelphia, for a copy of "Indiacraft," by Earnest Thompson Seton, and to Miss Letitia Jeffries, 1130 Divinity Place, Philadelphia, for five volumes of fiction.

Ten volumes of fiction have been purchased with the money received last summer from the rental of books to guests.

It is needless to say that we are ever ready to receive all interesting books for the library.

Mrs. S. M. Fleming, 5922 Thompson Street, Philadelphia, offered us a good organ after we had our needs fulfilled.

Mrs. Anna L. Wood, 725 Butler Street, Philadelphia, has given us a square grand Steinway piano, in excellent condition, for our Social Hall. For all of this we are grateful and only await the opportunity to say the same for a radio. No. You are not too late.

40 promotional church meetings (w/ moving pictures)

Financial Report

Donations:

Piano, organ
Library books

Planned summer lectures

Proper Address:

Name
Cresco, PA
Care of
Paradise Falls

Meetings, dues

Nature Hikes

10:6

1928

Flowery front page talk of proposed \$250,000 hilltop hotel
Praise for last summer's Masked Parties and varied lectures

Children's Party
"Joan of Arc"
tableaux

New nature trails

Fire fighting
demonstration

New members
list

Dr Meng,
resident physician

Cottage sale
and summer
rentals



Published by the Paradise Falls Lutheran Association, Henryville, Pa.
POST OFFICE — CRESCO, PA.

Vol. II.

FEBRUARY 1, 1928

No. 1

An Announcement

On a lofty hill not far from the Falls there will soon be built a fine hotel at a cost of about a quarter of a million dollars. It will be equipped with every modern convenience. The Hotel Association will soon be ready to sell stock for the purpose.

For those who do not wish to build separate homes here will be an opportunity to spend as much of the summer as they choose in a location as fine and amid scenery as grand as any in the Pocono Mountains.

From this hill and from various others the scenery is magnificent. Here is Nature in all her primeval beauty and grandeur. One can stroll among the giant timbers, or gather flowers along the grassy hillside. Here, far from the crowded city, with its hurrying thousands, its dust and noise and turmoil, one can breathe the pure air and enjoy the sense of freedom known to the early pioneers. The lover of Nature can study the wild flowers and the wild birds.

The scenery is inspiring and grand. The landscape slopes away on every side to the distant blue line of the horizon. The green valleys with their rushing crystal streams, the sunny sloping hillsides, the mountains, lying along the horizon like sleeping giants, bearing immense forests and blending at last with the sky in the distant haze—all these pre-

sent a picture to the beholder not soon to be forgotten.

Would you study the stars, here is the opportunity. Away from the obstructing buildings and glaring lights of the city, the dome of the sky embraces you in elemental grandeur. Here you may study Arcturus and the Pleiades, the bands of Orion and the thousands of glowing orbs that bespangle the night sky—and the words of the Psalmist will swell within your soul, "Great and marvelous are thy works, Lord God Almighty!"

H. W. E.

Summer Activities at Paradise Falls

Social Hall was a lively place during the summer season. Besides the morning and evening services on Sundays the following events were held there:

Two Masked Parties were enjoyed, one at the beginning and one at the end of the season with about fifty in costumes pretty, unique and grotesque. Stately women over six feet tall paraded with winking eyebrows and haughty lorgnette, the Gold Dust Twins and other characters from the advertising page, Maude Muller, Topsy, Tom Sawyer and Huck Finn and other celebrities from literature were there. Prizes were given at each party.

Illustrated lectures were given by Rev. C. K. Lippard, our missionary to Japan, now on furlough, on Japan; by Rev. F.

1928



(Above) The silent grandeur of the picnic grove in winter.



(In oval) The great rhododendron that abounds in the Poconos.

(Below) Nature study hikes will be held under able guides.

Commune With Nature on the Ideal Vacation

RELAX—breathe the pine-scented mountain air—walk in real woods—fish and bathe in fascinating streams—yet live where there are the modern conveniences of running water and electricity.

The Paradise Falls Lutheran Association has put 500 acres of these pleasures within range of the ordinary pocketbook. To fully appreciate them, we invite you, if you are genuinely interested, to take a

TWO FREE TRIP DAY

right from your home and back, staying at Nestledown, the community house.

Only 300 members will be received before the cost of membership advances from \$200 to \$250. Now is the time to act and take advantage of this year's developments, such as new roads, work on water system, clearing and damming the lake, etc.

For your family's sake, fill in the coupon below and mail for full information.

(Nestledown—the community house—welcomes you and your family for a joyous vacation. Write for particulars and rates, stating the time desired.)

REV. CLIFFORD E. HAYS

Sec., Paradise Falls Lutheran Association
CRESCO, PA.



----- FILL IN AND MAIL -----

REV. CLIFFORD E. HAYS, Cresco, Pa. (2)

Dear Sir:

I am genuinely interested in a membership and would like information on the two-day trip.

Please send me rates at Nestledown.

Name

Street

City..... State.....

A LUTHERAN MAGAZINE
ARTICLE ADVERTIZED

Free 2 Day Trip!
(with Nestledown lodging)
to see P.F.'s new roads,
water system, electricity
and damming for pond
swimming!



In 1928, main road, Route 190,
came close to today's
#26, #27 cottages and was
just a macadam surface
till its cementing in 1930.

10:8

Before hiring a full time Social Director in 1934, volunteers led P.F.'s activities

The August 10, 1929
"SPRINKLE" (at back
reported that all
P.F. rooms were full
through August 24!

1929

Paradise Falls

SPRINKLE

(A small part of the SPRAY)

Also here:

July 27, 1929

Aug 3

Aug 10

like the rain, doesn't come every day,
but just when you least expect it.

Second Spritz

July 20, 1929.

Yeh, rain again. Rain every day for the last month but twenty-nine. But even at that it was a pretty good rain Thursday night. Just as soon as Eddy Tore runs the world we'll have rain every night between 12 and 3. Then it will be clear every day and we'll still have enough rain to make a SPRINKLE.

Lucky Ladies? It looks very much as if Red Rock Falls trip must come off the list. The owner has rather forcefully refused us permission to visit that beauty spot any longer. Mr. Amazon has made several overtures to the owner but without avail. Even money doesn't seem to tempt him. Let's all get together and buy the place. Come on.

We very nearly had a moonlight hay ride, didn't we. But then the marshmallow roast was hot anyhow.

That Monday Night Mixer was rather mixed, wasn't it. All varieties in one show. The mind reader and the string tricks at least had us on our toes (we couldn't see otherwise). We sure have enough talent on the grounds to make Oscar Hammerstein and Zeigfield Follies green-eyed with envy. And then that soul-touching proposal scene in the sketch--and Heraldine's snore reminded one of the eruption of Mt. Vesuvius.

A great line of movies again Saturday night--including Krazy-Katz.

Then we'll try another MONDAY NIGHT MIXER next week. Volunteer talent come forth--don't be bashful.

A very pleasant Children's Party occurred in Social Hall Friday afternoon. Miss Roeth was the kindly hostess.

Sign up early for the various bus trips next week. The bus works every day and trips can be arranged for groups of 6 or 7 to any point within 40 miles.

We hope ere long to add Playground equipment for the smaller children. A delightful spot in the grove toward the Falls has been selected for these additions.

The rain Thursday night saved us from DRASTIC WATER CONSERVATION, but we must continue to be careful in our use of water in all buildings.

Dr. E. E. Fischer again brings the Sunday morning message at 10.30 o'clock.

10:9

@ 1929 BROCHURE

550 acres, Girls Camp "envisioned"
pond swimming
Henryville R.R. station
68 acres set aside for "Hotel"
Oct 1929 Stock Market Crash
dashed "Hotel" dreams

@ 1929

Girls Camp on drawing board
Switch from Henryville to Cresco
post office and rail station
43 cottages in construction
32 cottages are pictured

The following two pages show the 1929 brochure's features:
ie enlarged Nestledown, newly built Brown & White Cottages
and swimming pool (ie pond) and plans for the Girls Camp!



PARADISE FALLS (Post Office, CRESCO), PA.

PARADISE FALLS

Nestledown, which contains our rustic community dining hall, is amply large to care for our many guests who are served by smiling waitresses who deem service a pleasure. Groupings are about small tables, making a congenial atmosphere. The large, airy window spaces allow the cooling breezes to pass through the room, making the meal delightfully pleasant.

Service is American Plan at regular meal hours. All guests dine here.

Good food is vitally essential for our guests. Our kitchen, under supervision of an expert dietitian, serves only the choicest of meats and other wholesome and tasty foods. Fresh fruits, vegetables and milk are procured at nearby farms, all daintily cooked and served so that your stay may be beneficial and delightful.

Falls House is the Business Centre of the Association, where all arrangements are made for your accommodation. It also has a large up-to-date Tea Room, where you get whatever you desire. Open from 7 a. m. to 11 p. m. Falls House is open all year and will take care of guests. Bring your friends to the Tea Room and enjoy the evening at Paradise Falls.



Nestledown



Falls House—Executive Office and Tea Room



Guest House

Social Hall Provides the scene of many delightful evening gatherings. Socials, musicales, community sing-alongs, masked parties, motion pictures, lectures, stunt rites and theatricals are held several nights each week. From this center of activities start the moonlight straw rides and marshmallow hikes also.

The large auditorium is used for conventions and meetings that are becoming so popular at this resort. Try and arrange your next gathering at Paradise Falls. Write for open dates.



Tea Room and Gift Shop

Information—Railroad station—*Henryville, Pa., on both D. & E. and Pennsylvania Railroads*
Read Well—*Mail should be addressed to Paradise Falls, Post Office, Cresco, Pa. Do not put Henryville on mail.*

Telephone—Call Paradise Falls, Stroudsburg Exchange.
Telegrams should be addressed to Paradise Falls, Stroudsburg, Pa.
Bus meets trains at Henryville Station and busses at Swiftwater when notified.

Rates for Room and Board Two in room, \$17 per week, each. One in a single room, \$18 per week. Cot in room \$5 per week. Board for adult using cot, \$12 per week. Board for children under twelve, half rate. Room and board per day, \$5.50. Make reservations in advance. Room for 200 guests.



Guest House

Cottages for rent.
Address all communications to the Paradise Falls Lutheran Association, Paradise Falls (Post Office, Cresco), Pa.



Paradise Falls Girls' Camp

The camp will be conducted under the supervision of a trained camp director who will give careful attention to the health and training of the campers.

Inspires—Self Understanding, Devotion, Love of Nature, Respect.

Assures—Safe Country, Tented Water, Wholesome Food, Play and Adventure.

Provides—Religious Instruction, Programmed Play, Exercise, Rest, Comfort and Water Sports.

Rates—\$12.00 per week, payable in advance of the girl's camping period. \$2.00 per week of which is payable with application.

Endorsed by Church Leaders

Send for Camp Literature

Select Paradise Falls For Your Vacation You Will Enjoy It!



A Nature Study Hike



The Hikers Delight



A Fishing Party at Red Rock Falls



A Morning Catch



Cranberry Creek

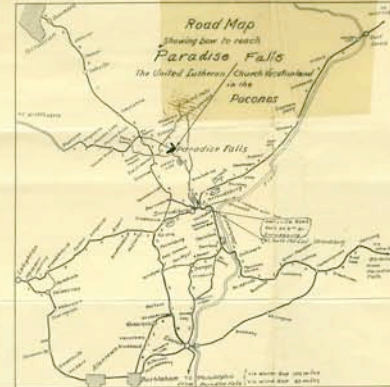


Eight to Fourteen inch Trout

A Summer Resort Amid Unsurpassed Beauty For Every Member of the Family

Attractions

Sight Seeing Trips
Horseback Riding
Playgrounds
Swimming
Croquet
Pony Golf
Lectures
Camping
Nature Study
Fishing
Hiking
Tennis
Entertainments
Movies
Musicals



Railway Service to Henryville, Pa.

Via Lackawanna from New York and vicinity and Scranton.
Via Pennsylvania from Philadelphia, Trenton and Easton.
Association Busses will meet trains by appointment.



PARADISE FALLS (Post Office, CRESCO), PA.

How to get to Paradise Falls

By Motor

From Philadelphia—Route 309 to Center Valley, Route 12 to Scata, Route 209 to Stroudsburg, then to E. Stroudsburg to Route 190 to Route 90 then straight on for a short distance to Paradise Falls, or
From Philadelphia—Route 611 to Stroudsburg, then Route 209 to Route 190 to Route 90, to Paradise Falls.
From Scranton—Route 611 to Mt. Pocono, left on Route 615 to Route 90, then right on Route 90 to Paradise Falls.
From Wilkes-Barre, Pa.—Route 115 to Pocono Summit, then Route 615 to Route 90, then right on Route 90 to Paradise Falls.
From New York City—Shortest Route to Dover, N. J., then Route 6 to Portland, Pa., then Newark Route 611 to Stroudsburg, then Route 209 to Route 190 and 90 to Paradise Falls.
Jersey City
Paterson

By Bus

Frequent service from Philadelphia and New York to Bus Terminals to Stroudsburg, Pa., D.L.&W Depot. Then Pocono Stage Bus to Paradise Falls.

The new schedule of the Pocono Bus will make close connection with Buses from all points.

Send for schedules Ready May 1st.



New Concrete Paradise Valley Road

The Swimming Pool



Room in Nature's Scenic Playground



Open All Year



Thousands Visit the Falls Annually



Free Automobile Parking



Hunting and Fishing in Season



Tea Room Open Daily From 7 A.M. to 11 P.M.

Paradise Falls, THE LUTHERAN RESORT in the Poconos



Healthful - Restful

NATURE'S PARADISE

Refreshing - Invigorating

PARADISE FALLS, the noted scenic spot, is located in beautiful Paradise Valley in the Poconos, the popular and rapidly developing mountain resort section near Henryville, Monroe County, Pennsylvania, ten miles north of Stroudsburg, owned and operated as a resort for Lutherans by the Paradise Falls Lutheran Association. 1100 feet above Sea Level.

The Land of Rhododendron, where trails lead through mountain paths and thickets covered with many varieties of wild flowers and ferns, and along three excellent trout streams included in the property.

The association owns 550 acres of valuable land that has been laid out into roads and lots with 68 acres reserved for a hotel site and nine-hole golf course, and has a Community House with Dining Hall and Kitchen, Social Hall, Tea Room, three large dwellings, store, garages, pavilion, bridges, water system with deep well, pump, reservoir, electricity and three and a half miles of water mains, and several miles of roads on grounds.

Membership

Those who desire healthful rest, out-of-door sports and wholesome fellowship in a region of rare beauty, noted for its invigorating atmosphere, that greatly enriches life, are offered membership in the Association which gives them among other privileges the choice of a lot 100 x 125 feet on which to erect a dwell-

ing. Only one membership can be held by an individual, but each one of a family, who is a member of the Lutheran Church, is privileged to hold membership.

The cost of membership is Three Hundred Dollars (\$300.00) at present, payable in cash or by installments over a period of twelve months.

Members of the Association have erected forty-three cottages and bungalows (valued at \$125,000.00).

Those who desire to enjoy the benefits of Paradise Falls, but who do not want membership in the Association, are offered guest privileges at Nestledown, the community house, and in the cottages on the grounds.

Paradise Falls is reached by motor over modern concrete highways along mountain ridges that are romantic and full of color, the joy of motorists, via the D. L. & W. and Pennsylvania Railroads and via Bus lines from various points.

Paradise Falls Offers You A Vacation That's Different

Here you are privileged to meet and learn to know the clergy and laity of our denomination. You may enjoy the services of your own church in the large auditorium every Sunday, as well as hear popular lectures on a wide variety of subjects given by our pastors, laymen and professors. You have no care whatever, plenty of fresh mountain air and water, the lag wide open spaces, cool refreshing sleep, recreation, and rest that will build you up. Paradise Falls is truly a great Health Resort. You meet the most congenial Christian folk amid a region of unsurpassed beauty, a safe place for your boy or girl. There's practically no formality of life at Paradise Falls. Here you may thoroughly relax.

A Unique and Attractive Vacation Place



Bring your Sunday School class for a day's outing in the Grove at the Falls



Picnic Parties Welcome (weekdays only)



Camping Permitted



Bathing ~ Sports

Views of Cottages owned by members of the Association



Views of Cottages owned by members of the Association



Social Hall



Entrance to Falls

1929 BROCHURE

Guests swam in pond near Cottage 25 Lake Crawford was ready to enjoy in 1939!

The Swimming Pool



Guests shared this pond with girl campers from 1931-39

Attractions

*Sight Seeing Trips
Horseback Riding
Playgrounds*



Tea Room and Gift Shop

Our Tea Room had rustic bark-edged pillar

Social Hall



Entrance to Falls

1929 BROCHURE

Room for 200 guests

Henryville Train, Swiftwater Bus

Single room/board \$18 per week



Brown Guest House



Nestledown



Falls House—Executive Office and Tea Room

Rates for Room and Board Two in room, \$17 per week, each. One in a single room, \$18 per week. Cot in room \$3 per week. Board for adult using cot, \$12 per week. Board for children under twelve, half rate. Room and board per day, \$3.00 except week-ends, when the rate is \$3.50. Make reservations in advance. Room for 200 guests.



White Guest House

Cottages for rent.

Address all communications to the Paradise Falls Lutheran Association, Paradise Falls (Post Office, Cresco), Pa.



Tea Room and Gift Shop



Paradise Falls Girls' Camp

The camp will be conducted under the supervision of a trained camp director who will give careful attention to the health and training of the campers.

Information Railroad station—Henryville, Pa., on both D., L. & W. Read Well and Pennsylvania Railroads.

Mail should be addressed to Paradise Falls, Post Office, Cresco, Pa. Do not put Henryville on mail.

Bell—Telephone—Call Paradise Falls, Stroudsburg Exchange.

Telegrams should be addressed to Paradise Falls, Stroudsburg, Pa.

Bus meets trains at Henryville Station and busses at Swiftwater when notified.

P.F.s visionaries dreamed about a new hotel on the hill above the shalepit!



A modern hotel will be built on a site commanding a glorious view in every direction. The picture is an architect's suggestion.

The 1929 Depression dashed hopes of realizing this dream

This post card, issued 1926 gave an aerial view of fledgeling Paradise Valley Lutheran Association that became Paradise Falls Lutheran Association after the purchase of the Falls.



} First Cottages
built on flat
} farm land

The following pages enlarge and label what is pictured →

Notice: the flat and forested areas in 1926
3 bridges, auto, above and below falls
in 1926 we did not own Stumpf, Crane, Christ (Abend
Ruhe)

EARLY PARADISE FALLS MAP

////// Railroad Tracks

Cranberry Creek

Dimmick Detrick's house, barn
NESTLE DOWN



Harvey Detrick's house, barn
GATE LODGE SOCIAL HALL

Heydt house, barn & coop

Paradise Creek

Paradise Creek

ABEND RUHE FARM

Paradise Falls

Heydt House & Barn
(later) private cottages
Harvey Detrick's house and barn - Social Hall - Gate Lodge
Paradise Falls

10:15

ENLARGED AERIAL MAP

CRANBERRY CREEK

GATE LODGE

Harvey Dietrick's farmhouse

GARAGE AREA

H. Dietrick's farm sheds

FLYNN James Heydt farmhouse

MILLER R J Heydt's chicken coop

ELMAN-YALOVITZER J Heydt's barn

ROUTE 191 dirt then concrete

Road to Paradise Creek was moved beyond Elman - (Heydt barn) when Lake Crawford was dammed

CLIFFORD 1926 G. Fischer

PARADISE CREEK

LAKE CRAWFORD \$10,000 Donation later by Bertha Crawford moved lake here

Swimming pond till lake filled

HOTEL SITE (above shalepit)

WATER RESERVOIR SITE - Water Tower

WERKHEISER - 1926 I. Kuntz

SOLLBERGER - 1926 F. Fischer

ORIGINAL TOLL HOUSE FOR FALLS



KEY

- Pre-existing structures
- New PF Structures
- Structures built early now defunct
- Proposed sites - never developed

ACQUISITION OF ACRES

1923	23 acres	by A. Raymond Ra
1924	300 "	
1925	414 "	
1926	488 "	
1927	550 "	

Today -

10:16

ENLARGED AERIAL MAP

Our lake was to be built beyond Nudledown originally. When we were given land on Paradise Stream, it was created there.



BAUER
D. Dietrick's
farmhouse

C. MATTHY
"Nestledown"
Farmer Dimmie
Dietrick's barn

- LAKE SITE** - proposed before we owned Paradise Creek
- RAILROAD** - Delaware & Lackawanna tracks with stations at Henryville/Cresco
- STOYKO** - 1925 Mueller Cottage
- HALLMAN** - ? before 1912 both Lasher farmhouse & R.R workers' residence
1925 - Kidd Cottage
- GALLY** - 1925 - M.L Koons Cottage
- * Off Map **RUDAN** - ? >1915 Abend Ruhr retreat of A. Raymond Raff
- C MALANTONIO** - 1925 - Logan Cottage
- ROUTE 191** - Country Road
- MYERS** - 1926 - E Koon (Spickler) Cottage
- NEFF** #1 1925 N. Ohl Cottage
- STUMPF, JR** - 1925 Assoc. Pres. Buckner Cottage
- K MALANTONIO** - Spacht Cottage
- GIRLS CAMP SITE**
- UPPER FALLS BRIDGE**
- LOWER FALLS BRIDGE**
- PICNIC PAVILION**

Our first cottages were built on Pine and Laurel Drives because that was the first land that the Association had. When the Harvey Dietrick land including the Falls was purchased the Werkheiser and Sollberger cottages quickly were built.

1930 BROCHURE

① 1930 BROCHURE / POSTER

(cut apart on next few pages)

32 cottage photos / names of owners

1923-1930 PF "Growth Chart"
tracing # acres, # cottages, and
improving amenities

Please do not remove or unfold this piece. All its features follow on next pages.



CRESCO, PENNA.

10:18

1930 BROCHURE

See next page for more earliest built cottages.



1



2



3



4



5



6



7



8



9



10



11



12



13



14



15



16

LIST OF COTTAGERS

1. Mrs. Annie J. Fisher
2. Mrs. Carrie Kreckman
3. Walter S. Gordon
4. Rev. H. W. Fitting
5. Rev. Dr. Elson
6. Carl Breischafft
7. Anna L. Schuler
8. Frank W. Mueller
9. Dr. Frederick Wm. Meng
10. Rev. David G. Jaxheimer
11. Miss Florence M. Tienken
12. M. L. Koons
13. Mlle. Marie Roeth
14. Rev. H. S. Kidd
15. Mrs. Emma Haase
16. Chas. P. Faber

- Sollberger #24
- Pedulla #69
- Searing #45
- Fancher #80
- Foster #27
- Knaus #69
- Grimm #25
- Stoyko #63
- Reindl #34
- Scarpa #57
- Long #40
- Gally #60
- D. Bond #54
- J. Bond #50
- Stiller #36
- Silverman #1

Pre-1930 Owner of this pictured cottage

2022 Owner of same cottage (with today's #)

10:19

1930 BROCHURE

(cont)
See previous page for more earliest built cottages



17



18



19



20



21



22



23



24



25



26



27



28



29



30



31



32

List of Cottages

- | | |
|--------------------------------|---------------------|
| 17. Miss Anna R. Kuntz | - Werkheiser #23 |
| 18. Eda Mahler | - Linders #95 |
| 19. Rev. Emil E. Fischer, D.D. | - Higgins #12A |
| 20. Mrs. Laura Miller Blithe | - Olson #8 |
| 21. Wm. H. Jenkins | - #55 |
| 22. Miss Amy Strode | - Woodward #17 |
| 23. Rev. Clifford E. Hays | - Masenheimer #65 |
| 24. Wm. F. Buckner | - Stumpf #47 |
| 25. Miss Florence Z. Logan | - C. Malantonio #51 |
| 26. Rev. Harry P. C. Cressman | - Knabe #29 |
| 27. Miss Nora R. Ohl | - Neff #48 |
| 28. Mrs. E. M. Bitner | - C. Miller #88 |
| 29. Frederick P. Rossman | - Porter #56 |
| 30. Paul C. Whip | - J. Wicks #10 |
| 31. Rev. Jacob T. Flegler | - Teter #39 |
| 32. Miss Anna Spickler | - Myers #49 |
| 33. Clarence S. Ackerman | - Speers #42 |
| 34. Rev. F. Brezinski | - Pierce #22 |
| 35. Oscar G. Heyen | - Narra more #35 |
| 36. Miss Anna M. Spachman | - Wolk #87 |

Pre-1930 Owner
of this numbered
cottage

Second name is
2022 Owner of
same cottage with
its permanent #

In later years
PF owned up
to 700 acres!

Members
rented out
their own
cottage rooms!

Route 190
was not
100%
concrete
until 1930!

PF. functioned
without electricity
until 1927

GROUNDS OF PARADISE FALLS LUTHERAN ASSOC.

GROWTH SINCE 1923

Year	Acres	Members	Membership Value	Cottages	Rooms For Rent	Road to Grounds	Week Guests	Lights	Falls Visitors
1923	23	5	\$100	0	0	Country	0	0	0
24	300	45	\$100	0	14	Oiled	44	Tallow	0
25	414	77	\$125	6	40	Surfaced	300	Oil	13000
26	488	150	\$150	9	72	Improved	600	Gasolene	17000
27	550	246	\$200	18	100	30% Concrete	1000	Electric	13000
28	550	335	\$250	25	125	60% Concrete	1200	Electric	12000
29	550	351*	\$300	33	155	90% Concrete	1350	Electric	16000
30	550	370	\$300	37	185	100% Concrete	1550	Electric	

All memberships are active. Where a death occurs or a member is lost for any reason whatsoever the total number of members is reduced by one until replaced by a new member.

LIST OF MEMBERS

- | | | |
|---------|------|-------------------------------|
| Lot No. | Sec. | ALLENTOWN, PA. |
| 40 | 5 | Charles B. Bowman |
| 78 | 2 | Rev. Harry P. C. Cressman |
| 26A | 1 | Rev. William L. Katz |
| 20 | 3 | Alfred Koch |
| 14 | 3 | J. W. Koch |
| 96 | 3 | Conrad W. Raker |
| 21 | 5 | Mrs. John H. Raker |
| 29 | 2 | Rev. J. H. Raker |
| 95 | 3 | Roberta N. Raker |
| 151 | 1 | Ruth D. Raker |
| no lot | | Miss Caroline E. Trump |
| | | ALTOONA, PA. |
| 32 | 2 | Rev. Jacob T. Flegler |
| 110 | 1 | Miss Katherine M. Schneider |
| | | AMBLER, PA. |
| 39 | 5 | Miss Mabel C. Ely |
| 38 | 5 | Mr. and Mrs. Warren A. Ely |
| 19 | 1 | Mrs. M. K. Harr |
| | | ARDMORE, PA. |
| 59 | 5 | Mrs. E. M. Bitner |
| 64 | 2 | Emily H. and Esther G. Hughes |
| 152 | 4 | Samuel R. Henry |
| 52 | 4 | Paul Ohl |
| 10 | 4 | Wesley J. Ohl |
| | | BALTIMORE, MD. |
| | | Miss Bessie E. Kleibacker |
| | | BELLAIRE, L. I., N. Y. |
| 63 | 5 | Rev. George O. Bejerko |
| 50 | 2 | Elmer E. Keller |
| | | BETH AYRES, PA. |
| 197 | 1 | Emil P. Stahl |
| | | BETHLEHEM, PA. |
| 77 | 2 | Edna E. Belzner |

- | | | |
|---------|------|---------------------------|
| Lot No. | Sec. | HASBROUCH HEIGHTS, N. J. |
| 44 | 5 | Leonora A. Neuman |
| 44 | 5 | Emil P. Neuman |
| | | HOBOKEN, N. J. |
| 62 | 2 | Mrs. Anna A. Weidner |
| 61 | 2 | Mrs. Emma Muth |
| | | HOLLIS, N. Y. |
| 111 | 1 | Mr. H. Becker |
| 83 | 2 | Mrs. Josephine Becker |
| 48 | 4 | Mrs. Augusta E. Buckner |
| 1 | 2 | William F. Buckner |
| 53 | 4 | Rev. Arthur S. Hardy |
| 3 | 4 | Mrs. Elizabeth C. Heeg |
| 7 | 4 | Miss Edna Hempel |
| 147 | 4 | Henry C. Hempel |
| 139 | 4 | Henry F. Hemple |
| 8 | 4 | Miss Louise C. Hempel |
| 60 | 4 | Mrs. Hulda Kautz |
| 162 | 4 | Mrs. Carrie Kreckman |
| no lot | | Herbert C. Matz |
| 9 | 4 | Henry Merkel |
| no lot | | John C. Pfeiffer |
| 153 | 4 | Mrs. Henrietta D. Schmidt |
| 46 | 4 | Anna B. Seeth |
| 38 | 4 | George Seeth |
| 35-36 | 2 | Anna C. Tienken |
| 40-41 | 2 | Miss Florence M. Tienken |
| 61 | 4 | Mrs. Lillian Van Houten |
| 154 | 4 | Ralph H. Van Houten |
| | | IRVINGTON, N. J. |
| 51 | 2 | Mrs. Emma Haase |

10 : 21

1930 BROCHURE

Potential members liked knowing others committed to Paradise Falls.

BROOKLYN, N. Y.		
142	1	Dr. Herman R. Ahlers
147	1	Mrs. Hazel G. Ahlers
35	4	Miss Anna Berman
no lot		John B. Berger
142	4	Howard E. Brace
73	2	Margaret and Dorothy Burns
134	4	Joseph C. Dittmer
43	4	Mr. and Mrs. Clarence C. Dittmer
61	5	Fred J. Elmiger
11	1	Charles P. Faber
58	1	Mrs. Maude Spencer Feldman
47	1	George V. Fink
104	4	Mrs. Agnes K. Hall
101	3	Charles Hartman
102	2	Mrs. Charles Hartman
49	2	W. C. J. Keller
166	4	Miss Clara L. Klee
151	4	Mrs. Anna F. Krauss
27	5	Anna Mahler
36	5	Eda Mahler
42	2	Elizabeth L. Mammen
63	2	Miss Margaret Moller
37	2	Elizabeth Muller
26	1	Mrs. F. Otten
132	4	Mr. Herbert F. and Helen D. Pallesen
57	1	Edgar Rademacher
36	4	Mrs. William Rademacher
no lot		Frederick L. Rath
181	4	Philip H. Schoening
no lot		William Schneider
22	4	Rev. W. H. Stutts, D.D.
52	5	Jacob Theobald
67	2	Miss Louise A. Vogt
44	1	Mrs. Jennie Von Thun
CAMDEN, N. J.		
107	1	Mrs. Adam Schlorer
CHESTNUT HILL, PA.		
171	1	Harry H. Hunsberger
COATESVILLE, PA.		
66	2	A. Gustav Luebert
77	1	Miss Amy Strode
78	1	Miss R. Elizabeth Swing
DREXEL HILL, PA.		
159	4	Dr. William S. Spaeth
47	2	Harry R. Hess
DUNELLEN, N. J.		
33	4	Miss Frances E. Richter
19	2	Deceased.
EASTON, PA.		
23	2	Clarence S. Ackerman
135	4	Esther H. Bellmer
ELIZABETH, N. J.		
27	2	James A. Reed
FLATBUSH, N. J.		
6	1	Mrs. Luther D. Gable
FLORAL PARK, L. I., N. Y.		
21	2	Rev. and Mrs. Ralph M. Durr
177	4	Mrs. Flora E. Henigin
20	2	John Henigin, Jr.
FREEPORT, N. Y.		
46	2	Rev. David G. Jaxheimer

JAMAICA, N. Y.		
no lot		Luther League, Lutheran Church of Our Saviour
17	4	Henry Wehle
18	4	Mrs. Martha M. Wehle
JERSEY CITY, N. J.		
164	4	Sarah S. Bauman
171	4	Miss Ida G. Bauman
10	1	Rev. F. Brezinski
10A	1	Mrs. Frida Brezinski
LANSDOWNE, PA.		
139	1	Mrs. Edna M. Bien
LANSFORD, PA.		
26	5	Rev. E. Richard Acker
LAURELTON, L. I., N. Y.		
47A	1	Mrs. Anna E. Bittner
LEBANON, PA.		
75	2	Mr. George A. Fisher
60	5	Rev. Elwood Schwenk
LEHIGHTON, PA.		
no lot		Mrs. Anna K. Bennett
LYNBROOK, N. Y.		
155	4	Rev. E. W. Hammer
MAPLEWOOD, N. J.		
168	1	Christian F. Voehringer
MAUCH CHUNK, PA.		
9	1	Miss Anna R. Kuntz
25	1	Frederick P. Kuntz
8	1	Mrs. Emma L. Kuntz
1	1	Miss Rachel M. Kuntz
MELROSE PARK, PA.		
no lot		Dorris M. Beardwood
no lot		Peter P. Hagan
no lot		Mrs. Peter P. Hagan
190	1	Mary R. Miller
MERRICK, L. I., N. Y.		
26	3	Mrs. Amanda J. Wasmer
NEWARK, N. J.		
57	5	Latta L. and Sarah M. Propes
NEW ROCHELLE, N. Y.		
25	5	Rev. F. H. Knubel
NEW YORK CITY, N. Y.		
89	2	Mrs. Florence Becker
23	1	Mrs. Emma Busch
no lot		Henry A. Dahlen
44	5	Emmie A. Damburan
41	4	Wilhelmina Dreyer
31	2	Mrs. Etty W. Engle
97	3	Elizabeth E. Hoehn
6	2	John M. Korner
		Mildred Froblin Lovass
6	4	Rev. Tryger Olav Lovass
123	1	Miss Mary E. Markley
no lot		Rev. F. E. Oberlander
28	2	Mrs. Angela Sanjek
83	5	Rev. Louis Sanjek
167	1	S. W. Speicker
202	1	Paul C. Whipp

This "casino" (ie community center) was
pictured on the back of one of P.F.'s
early brochures.

1930

PROPOSED CASINO



BOARD OF DIRECTORS

REV. F. H. KNUBEL, D.D., Honorary President
WM. F. BUCKNER, New York, President
ERWIN W. MOYER, Philadelphia, Pa., Treasurer
REV. H. S. KIDD, Souderton, Pa., Vice-President
WM. H. JENKINS, Philadelphia, Pa., Secretary
Rev. E. E. Fischer, D.D., Philadelphia, Pa.
Rev. H. W. Fitting, Quakertown, Pa.
Rev. Fr. Flothmeier, Philadelphia, Pa.
H. C. Hempel, Hollis, Long Island, N. Y.
Rev. D. G. Jaxheimer, Freeport, L. I., N. Y.
Paul L. Larson, Philadelphia, Pa.
E. Clarence Miller, D.D., Philadelphia, Pa.
Frank W. Mueller, Philadelphia, Pa.
Rev. J. E. Rudisill, Philadelphia, Pa.
Rev. W. H. Stutts, D.D., Brooklyn, N. Y.

PARADISE FALLS LUTHERAN ASSOCIATION, CRESCO, PA.

Note also the early member names with descendents still
involved with P.F.

Kidd - Bond and Ehinger

Flothmeier*

Mueller - Hoyt

Moyer*

10:23

SPEND YOUR NEXT VACATION AT

It's Different

PARADISE FALLS

Open All Year

The Vacation Land Covering 550 Acres, that is Growing More Popular Every Year
Here you can make the best summer investment that will bring you much satisfaction for little money



This 1932 brochure gave a car road map from several PA, NJ, NY on its reverse side.

A Unique Resort in Nature's Paradise with Christian Environment
for people of every denomination

Healthful - Restful
Refreshing - Invigorating

Ideal for the young folks ~ Wonderful for adults

Camping permitted — Picnics and Outings (Weekdays only)
Conventions welcomed — Cottages for rent



Gate Lodge—Executive Office and Tea Room

**REDUCED RATES - GOOD FOOD
TRY PARADISE FALLS THIS YEAR**

Special Rates for May, June, September and October in
Association buildings, \$15.00 per week — week ends \$3.00
per day. In private cottages at July and August rates.

July and August { Single room, \$18.00 per week.
Two in a room, \$16.50 per week, each.
Three in a room, \$15.00 per week, each.
Week ends, \$3.50 per day. (Children half rate.)

For further information and reservations, address

Paradise Falls Lutheran Association
Paradise Falls, P. O. Cresco, Pa.

Erwin W. Moyer, Manager

Attractions

- Girls' Camp
- Sight Seeing
- Horseback Riding
- Playgrounds
- Swimming
- Croquet, Quoits
- Pony Golf
- Lectures
- Nature Study
- Hunting, Fishing
- Hiking, Tennis
- Entertainments
- Movies, Musicales

Nestledown—Dining Hall



10:24

NEW - 610 acres, Jr. Hi Girl Campers 1935
*Paid full-time Director of Entertainment

Paradise Falls

The Ideal Resort in the Pocono Mountains for a Summer vacation for Christian people. Located on the Beautiful Paradise Valley Trail, near Henryville, Monroe County, Penna.; conducted by the Paradise Falls Lutheran Association, an organization composed of members of
The United Lutheran Church.



Six hundred and ten acres of rolling hills and woodlands. Shaded walks along rushing mountain streams, bordered by Rhododendron. Rich in scenic beauty, attracting thousands of visitors each year.

PLEASING ENVIRONMENT

WHOLESOME FOOD

REASONABLE RATES

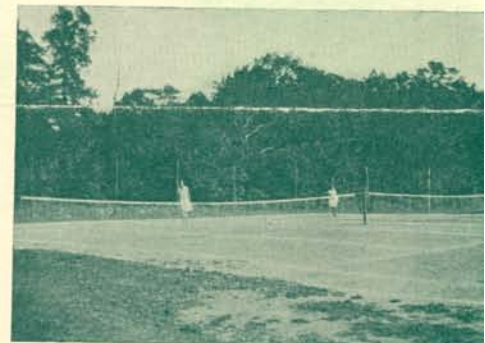
*Sight Seeing Trips
Horseback Riding
Playground for Children
Enlarged
Swimming Pool
Croquet
Quoits
Canoeing
Lectures
Camping
Nature Study
Hiking
Tennis
Entertainments
Movies
Musicals
Hunting
Fishing
Outdoor Shuffle Board*



PARADISE FALLS GIRLS' CAMP

An attractive Camp for Girls, divided into a Junior Camp (ages 8-12) and a Senior Camp (ages 13-16). Under the auspices of the Paradise Falls Lutheran Association.

Write for Folder.



1936



Paradise Falls

The Ideal Mountain
Resort in the Poconos
Amid Unsurpassed Beauty
On Route 90

A Unique and Attractive

Vacation Place

For every member of the family

Healthful
Restful
Invigorating

Pleasing
Environment
Home-like
Atmosphere



Films on the animatograph
motion picture talkie machine!

Vespers

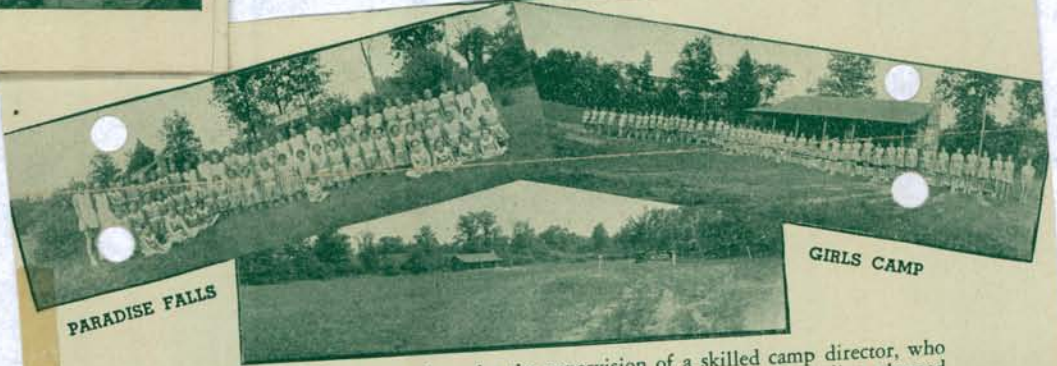
One pastor preaches all summer

Post Office at Cresco

Kids Sunday School

High attendance,
new lodge at
Girls Camp

Fishing, hunting
encouraged



PARADISE FALLS

GIRLS CAMP

An attractive camp for girls under the supervision of a skilled camp director, who will give careful attention to the health and training of the campers, including planned programs and athletics that are most beneficial and enjoyable. The food is the most wholesome and is the same high quality that is served to our guests in the Rustic Dining Hall at Nestledown. The camp is divided into a Junior Camp (ages 8-12) and a Senior Camp (ages 13-16). For further information and camp folder address Paradise Falls Lutheran Association, Paradise Falls (Cresco P. O.), Penna.

HUNTING and FISHING IN SEASON

Paradise Creek has been restocked with gamey trout, and fishermen are thrilled by the flash of the speckled beauties that are waiting to challenge the sportsmen's skill.



10:26

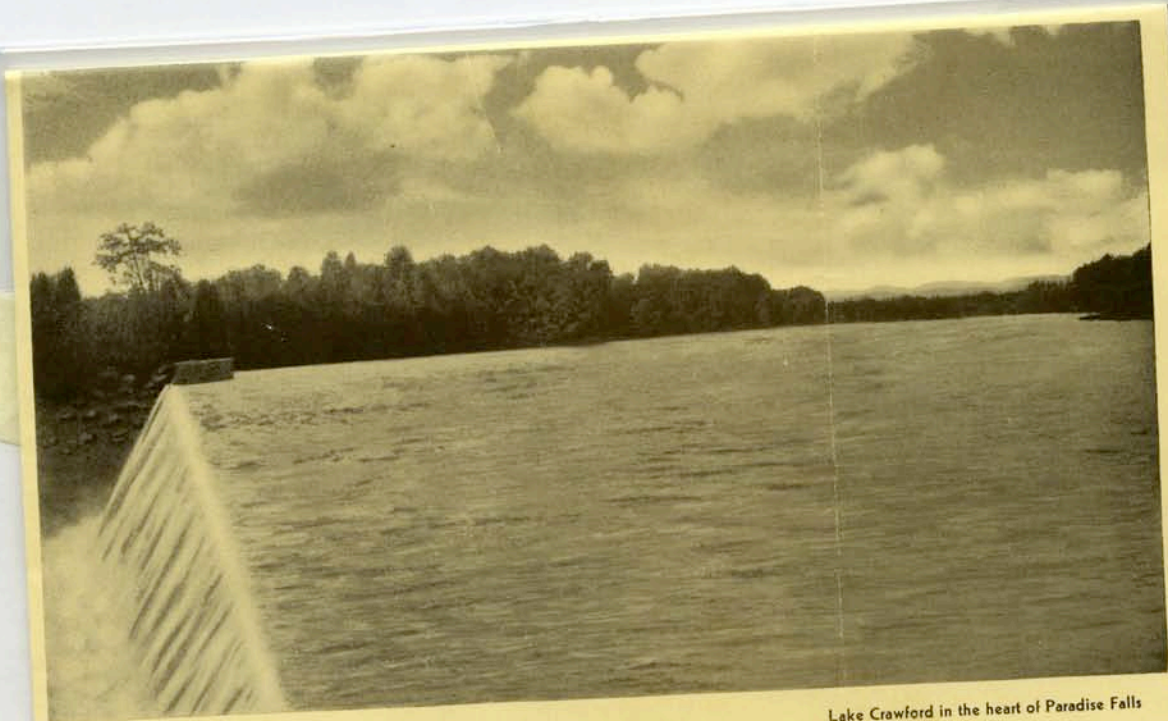
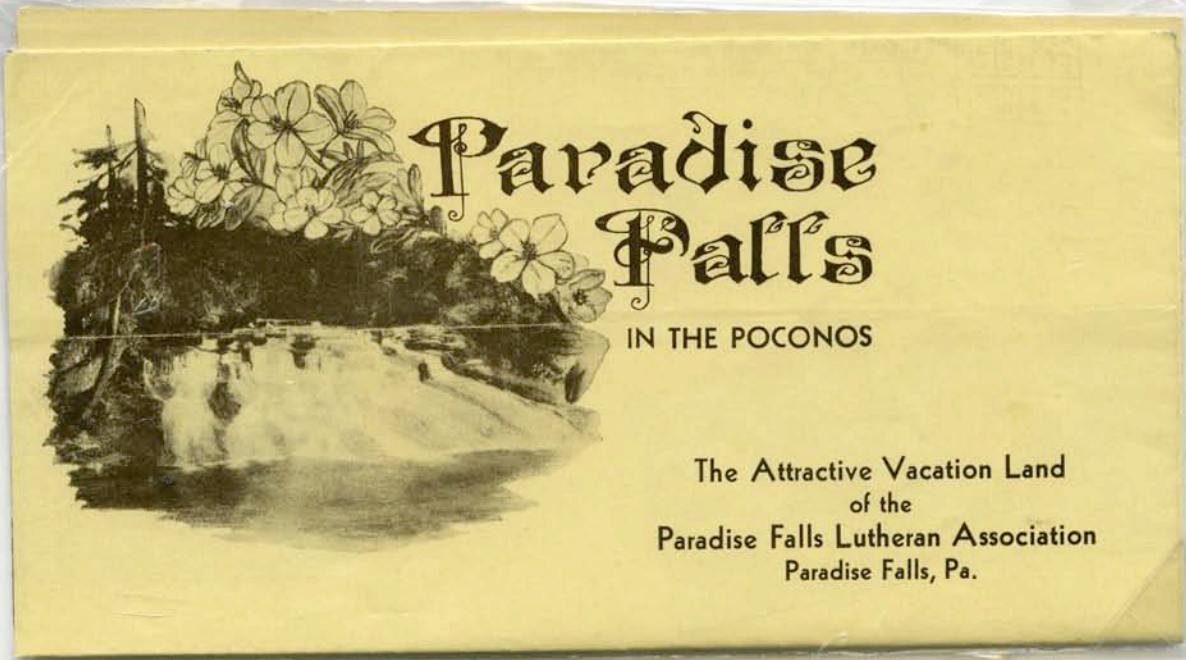
1939

17 YEARS AFTER
ITS BEGINING WE
AT PARADISE FALLS :

own 700 acres

swim in Lake Crawford!

have 60 cottages

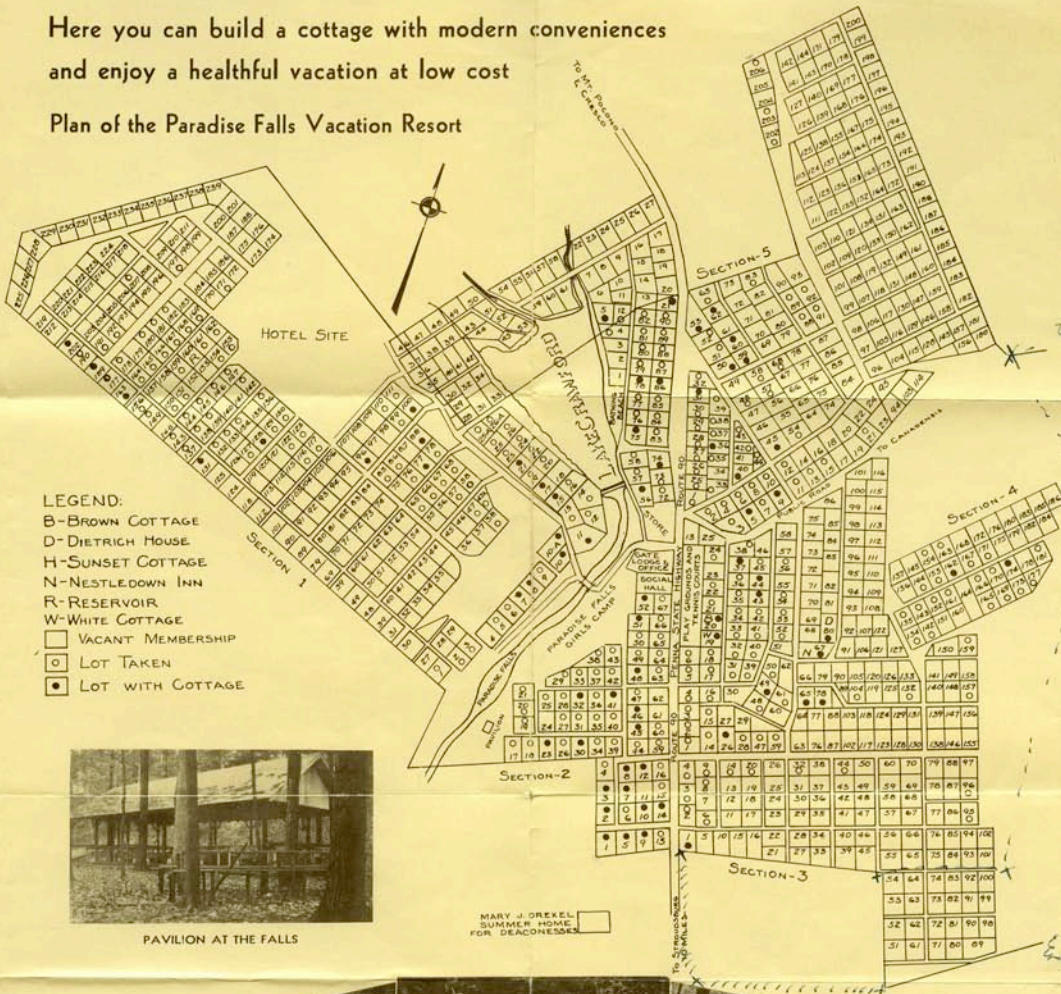


Lake Crawford in the heart of Paradise Falls

10:27

Here you can build a cottage with modern conveniences
and enjoy a healthful vacation at low cost

Plan of the Paradise Falls Vacation Resort



- LEGEND:
 B-BROWN COTTAGE
 D-DIETRICH HOUSE
 H-SUNSET COTTAGE
 N-NESTLE-DOWN INN
 R-RESERVOIR
 W-WHITE COTTAGE
 □ VACANT MEMBERSHIP
 ○ LOT TAKEN
 ● LOT WITH COTTAGE



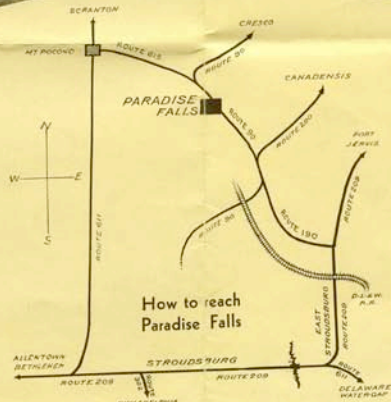
PAVILION AT THE FALLS

MARY J. OREKEL SUMMER HOME FOR SEAGONESSES



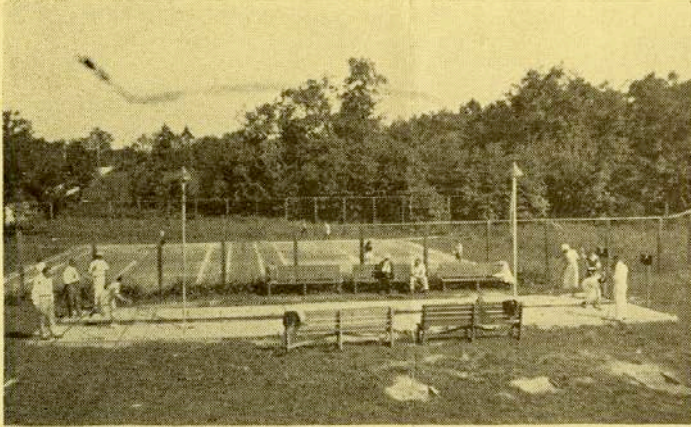
Nature lovers will find inexhaustible
delight hiking through mountain paths
covered with wild flowers and ferns

Sportsmen experience a thrill fishing
for the gamy trout and hunting wild
life in brook and cranny



ENTERTAINMENT AND RECREATION

The recreation possibilities are unlimited. Twice a week sound pictures bring you the latest in the movie world; weekly parties, lectures, musicals and social gatherings help to pass the time away. Nature study hikes, picnic hikes, sightseeing hikes, strawrides, bus trips to points of interest in the Poconos, doggie roasts, tennis tournaments, shuffle board tournaments, swimming, boating, fishing, horseback riding, all help to take you out into the open sunshine for health and pleasure.



CHRISTIAN ENVIRONMENT

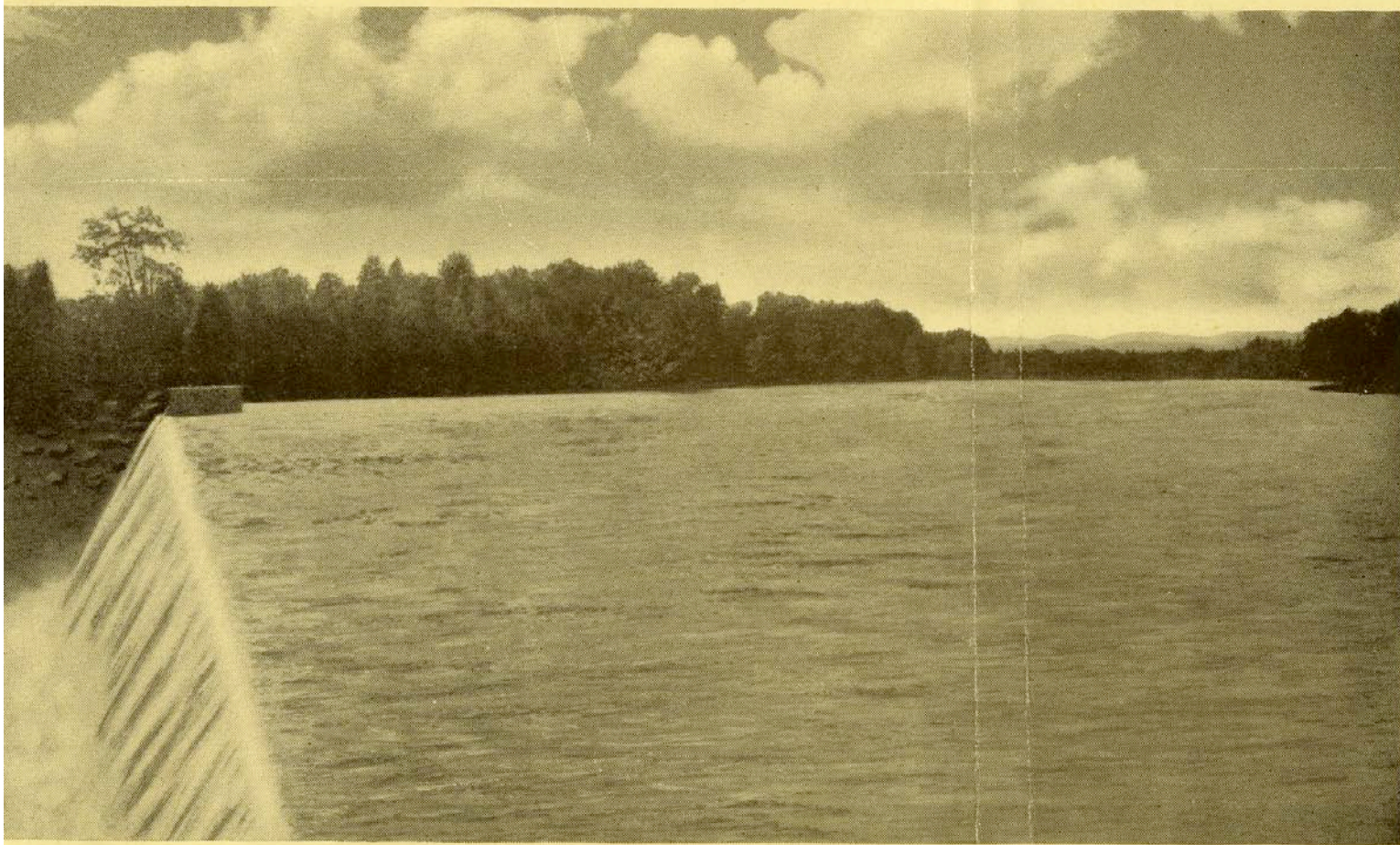
The personnel of the Association with whom you will come into contact as a member or guest of the Association includes doctors, lawyers, business men, ministers, teachers of our public schools and colleges, authors, architects, musicians, men and women of many different walks of life who are desirous of spending their summers in a Christian environment congenial for themselves and satisfactory for their children. Regardless of your age or your interests in life, you can find a kindred soul at Paradise Falls.

MEMBERSHIP COSTS

All of these advantages can be had at a small cost and with a minimum of responsibility. Most memberships are sold at \$500, but a limited number carrying with them the privilege of selecting a location on the shores of Lake Crawford in the center of the reservation, are quoted at \$500. Memberships costing \$500 carry with them the privilege of selecting any unselected lot anywhere on the grounds of the Association except on the shores of Lake Crawford. Annual membership dues are \$10.00, water rent \$6.00, rubbish collection fee \$4.00, and road maintenance fee \$1.50. These are the only stated charges. The taxes collected by the county are very reasonable and are controlled in amount by the value of your cottage. Insurance rates vary also with the value and type of your cottage but are the uniform rates of the standard companies. As to the cost of the cottage, there are no stipulations except that a sketch of the building and description of the same must receive the approval of the Buildings and Grounds Committee before the builder is given permission to begin construction. In the past, the cost of construction of representative cottages has ranged from \$1,800 to \$10,000. When necessary, small assessments are levied.

If you are interested in the promotion of a most desirable Christian summer resort, visit the grounds where courteous guides will meet you and enable you to see for yourself the many advantages of membership, or write for further information to The Paradise Falls Lutheran Association, Paradise Falls, Cresco, Pennsylvania.

Greyhound Buses Stop at Paradise Falls.



Lake Crawford in the heart of Paradise Falls

Paradise Falls Lutheran Association

IN 1922 a group of Lutherans interested in the establishment of a summer colony with a Christian background and environment in the Pocono Mountains of Pennsylvania organized the Paradise Falls Lutheran Association, a non-profit sharing corporation. To preserve its original intent, membership is restricted to persons who are members in good standing in the Lutheran Church. Applications for membership must be signed by the pastor of the congregation to which the applicant belongs.

The Paradise Falls reservation covers more than 700 acres of forest and meadow. Two fine trout streams and a large ten-acre lake furnish ample facilities for good fishing, bathing and boating. The waters of Paradise Creek, plunging over a rocky shelf, form one of the most scenic falls in the Poconos. These falls are the mecca of hundreds of sightseers and picnickers each season.

A GROWING RESORT

Among the many improvements on the grounds are more than sixty cottages owned by members of the Association; the well-known Paradise Falls Girls Camp, which limits its camp personnel to 75 carefully selected campers; the Falls picnic grounds and pavilion; twelve Association buildings including the Coffee Shop for transients and cottagers, Nestledown Inn with its splendid rustic dining room and living quarters for guests; Social Hall for recreation purposes; four dormitories for guests; Gate Lodge, the business center; and the Store where choicest of foods can be purchased at reasonable rates. Tennis courts, shuffle boards, and fine trails for hiking contribute to make Paradise Falls an ideal vacation resort.

WATER AND ELECTRICITY

All cottages are supplied with water from an artesian well owned and operated by the Association. Electric power at reasonable rates is supplied to all cottages by the Pennsylvania Power and Light Company. Dealers in meats and green goods, ice men and milk men call on cottagers regularly, making it unnecessary to leave the grounds for supplies. The Association supplies collection service for the removal of garbage and rubbish. Association buses furnish transportation at a nominal cost to a nearby city for shopping purposes. Regular daily mail delivery and newspapers from the metropolitan centers keep you in touch with the world at large.

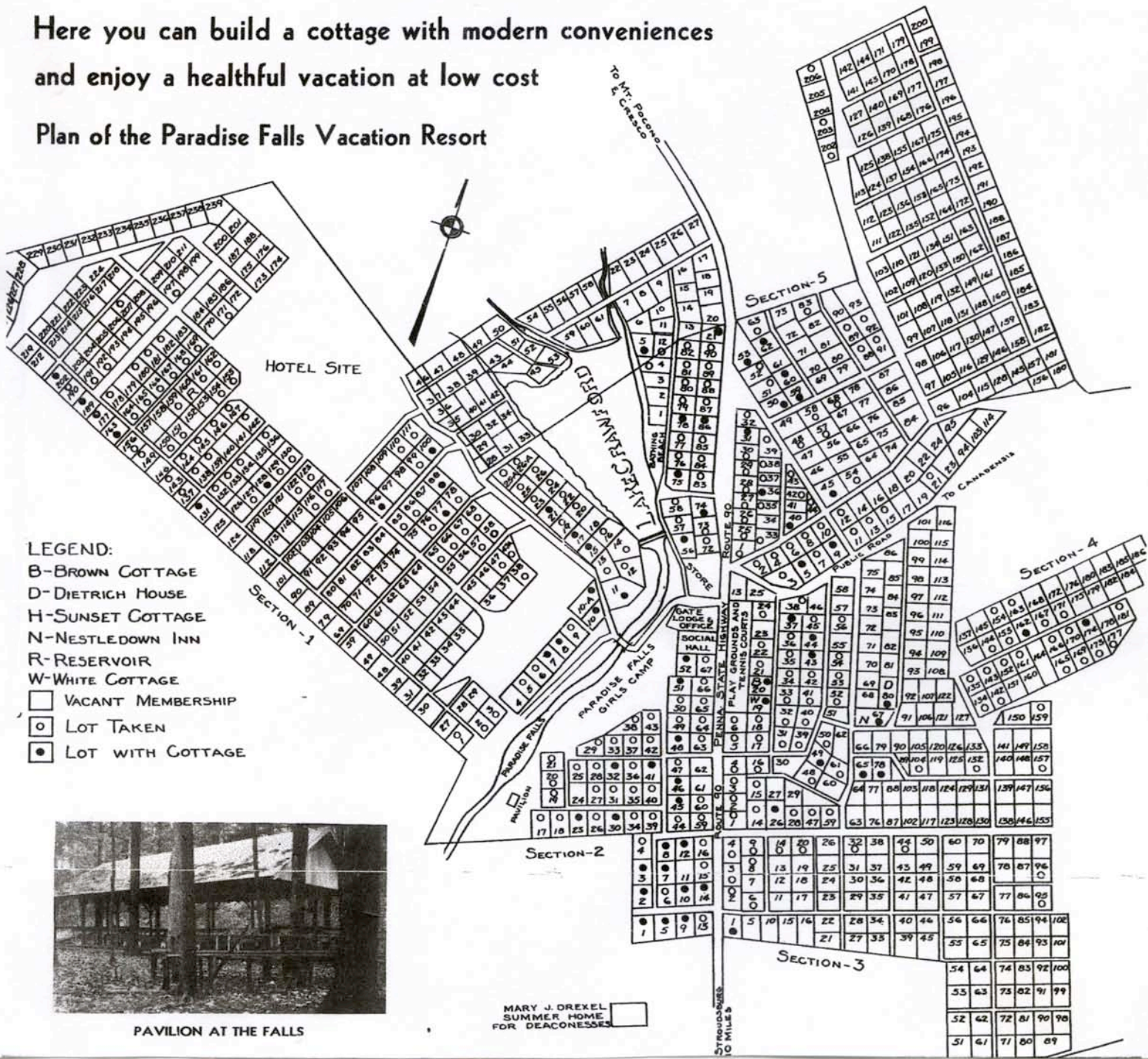
MEMBERSHIP PRIVILEGES

Membership entitles you to the privilege of selecting a plot of ground 100 x 125 feet for the site of your cottage. This plot of ground is assigned to your membership in perpetuity or as long as you are a member in good standing. As a member you have free access to the Falls, and access to the use of the lake for swimming and boating, to the streams for fishing, to the tennis courts and shuffle boards at a nominal fee. You may also attend all social and recreational gatherings without charge and profit by leadership and instruction on hikes. Careful oversight is provided for your cottage during the winter months to prevent vandalism, and there is freedom of access to all the Association grounds. All the facilities of the Association are placed at your disposal either without charge or at a minimum charge to cover actual overhead. You are a member of a congenial co-operative group, affording most desirable companionship.

1939

Here you can build a cottage with modern conveniences
and enjoy a healthful vacation at low cost

Plan of the Paradise Falls Vacation Resort



This second survey proudly verified the new Lake Crawford location, the Girls Camp site and all the cottages' locations prior to the completion of this survey.

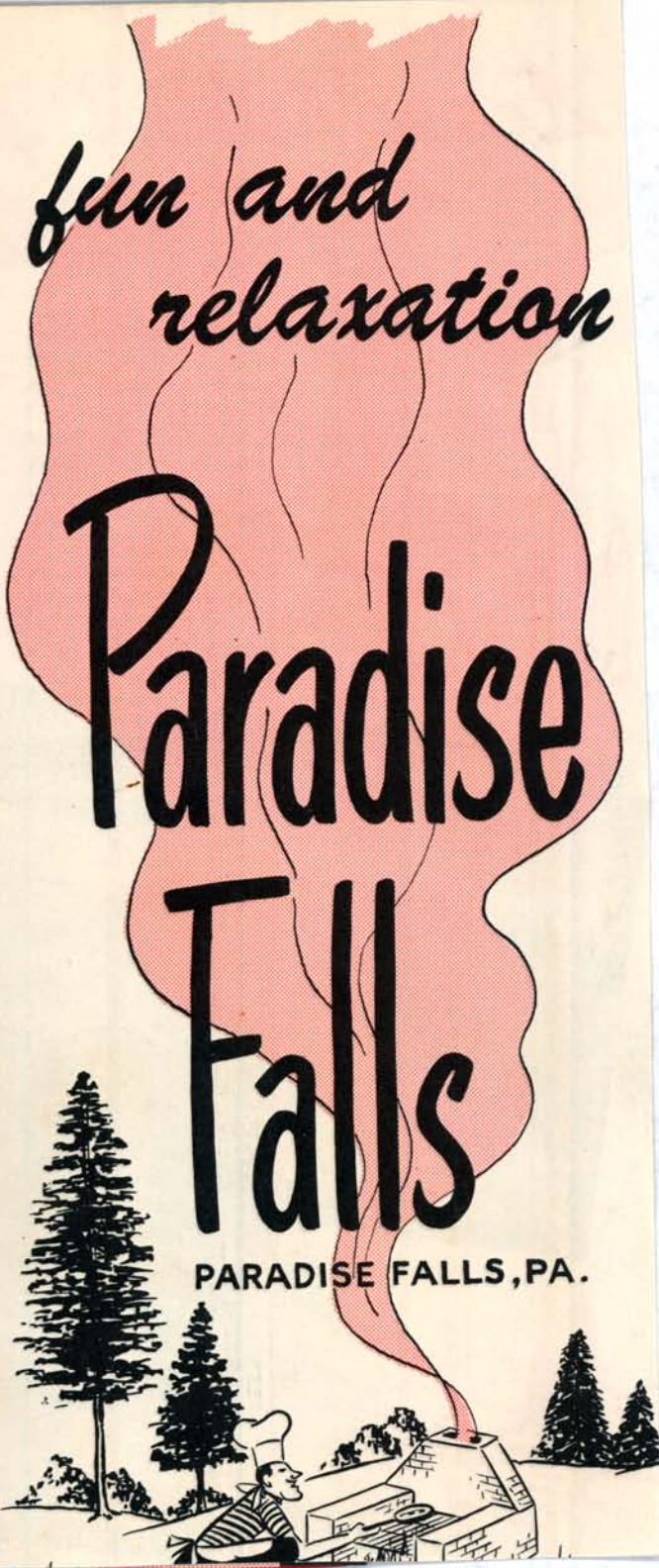
10:28

1940

fun and
relaxation

Paradise Falls

PARADISE FALLS, PA.



How to Get to Paradise Falls

CAR



From Stroudsburg take route 90. It is only ten miles.

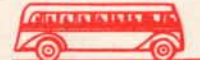
From Scranton take route 611 to Mt. Pocono, turn left and go six miles.

TRAIN



From New York and Northern Jersey—Main line of the Lackawanna R.R. to Cresco, Penna. Train will be met with station wagon if reservations have been made.

BUS



Greyhound and Martz lines to Swiftwater, Penna. Some schedules stop at Paradise Falls. If advance reservations are made station wagon will pick up guests at Swiftwater.



A vacation at Paradise Falls is an investment in health with fun and relaxation. Here you will find a Christian family resort with things of interest for all its members. Reservations should be accompanied with a ten-dollar deposit. Money will be refunded if your plans are changed and you can't come.

This @ 1940 brochure featured:

- same 700 acres
- new Cresco Railroad Station
- new Greyhound Bus stop at Gate Lodge!
- new encouragement of picnic/daytrips at the Falls.

10:29

MID-1940's BROCHURES

PARADISE FALLS

NESTLED IN THE POCONOS

Paradise Falls, Cresco, Pa.



Girls Camp { High Dive
Slide
Raft

ON-SITE P.O. BRANCH
1946-1956

Mt Pocono Golfing Arrangement

Falls entrance - 25¢

65 Cottages

(See next page for pix collage)



PARADISE FALLS

A Pocono Mountain Resort

Located 1100 feet above sea level on the beautiful Paradise Valley trail, Route 90, ten miles north of Stroudsburg. Here Christian people can spend an enjoyable vacation at low cost.

**UNIQUE AND ATTRACTIVE
PLEASING ENVIRONMENT
HOME - LIKE ATMOSPHERE**

For rates, reservation and travel, address

PARADISE FALLS LUTHERAN ASS'N
Paradise Falls, Pa. Cresco P. O.

From October 1 to May 1, 39 Meehan Ave., Phila. 19, Pa.

Arthur K. Leberknight, Manager

10:30



Lake Crawford, guests' bathing beach in center



High Dive at Girls' Camp bathing beach



Nestledown Lounge



Section of the Nestledown Dining Room



Nestledown, where happiness is provided three times each day

Between Henryville and Cresco, Pa., on Route No. 90, Pennsylvania, is a beauty-spot in the famous Pocono Mountains Vacationland,

PARADISE FALLS

Here in its 700 and more acres of natural forest, meadow and swift trout stream is afforded to the guests of Paradise Falls natural delights and unique association with other Christian people of like interests. Here one can choose activity or quiet relaxation, association with groups or alone-ness, nature trail hikes or motor trips to many nearby places of scenic or sport interest—all amid the comradeship of the chosen guests and cottagers of Paradise Falls.

Every Comfort Provided

The guests of Paradise Falls are comfortably housed, as desired, in Gate Lodge, Brown Cottage, White Cottage, Social Hall, and Nestledown (where the guests also assemble for the dining room)

Each guest room is equipped with hot and cold running water, porcelain basin, clothes closet space, a single or twin bed with inner-spring mattress, mirror, bedlamp, and other comforts.

Well-Balanced Meals

The main dining room at Nestledown, inviting and always cool at mealtime, offers a variety of fresh food, well cooked and tastefully served. The waitresses are mostly college women, supervised by an experienced hostess.

The Coffee Shop at Gate Lodge, with its tempting menus, provides extra dainties during the day and evening. A Gift Shop invites the gift-seeker. A central store offers groceries for cottagers and guests.

Planned Recreation

Recreation is under the supervision of a full-time recreational director, who organizes hikes, brief trips, enjoyable evenings, shuffleboard tournaments, tennis matches, and baseball games between the boys and girls, the single and married men. Playground for children contains swings, sand-box, etc. The Beach Supervisor regulates activities on Lake Crawford.

Address Reservations to

PARADISE FALLS LUTHERAN ASSOCIATION

PARADISE FALLS, Monroe Co., Pa.

Telephone: Stroudsburg 775 J 2

NOTE: Our Station Wagon will meet guests, when notified in advance, at the Lackawanna Railroad stations at Stroudsburg or Cresco, Pa. Send telegrams via Stroudsburg.



Horseback Riding Available



Entrance to Paradise Falls Woodland

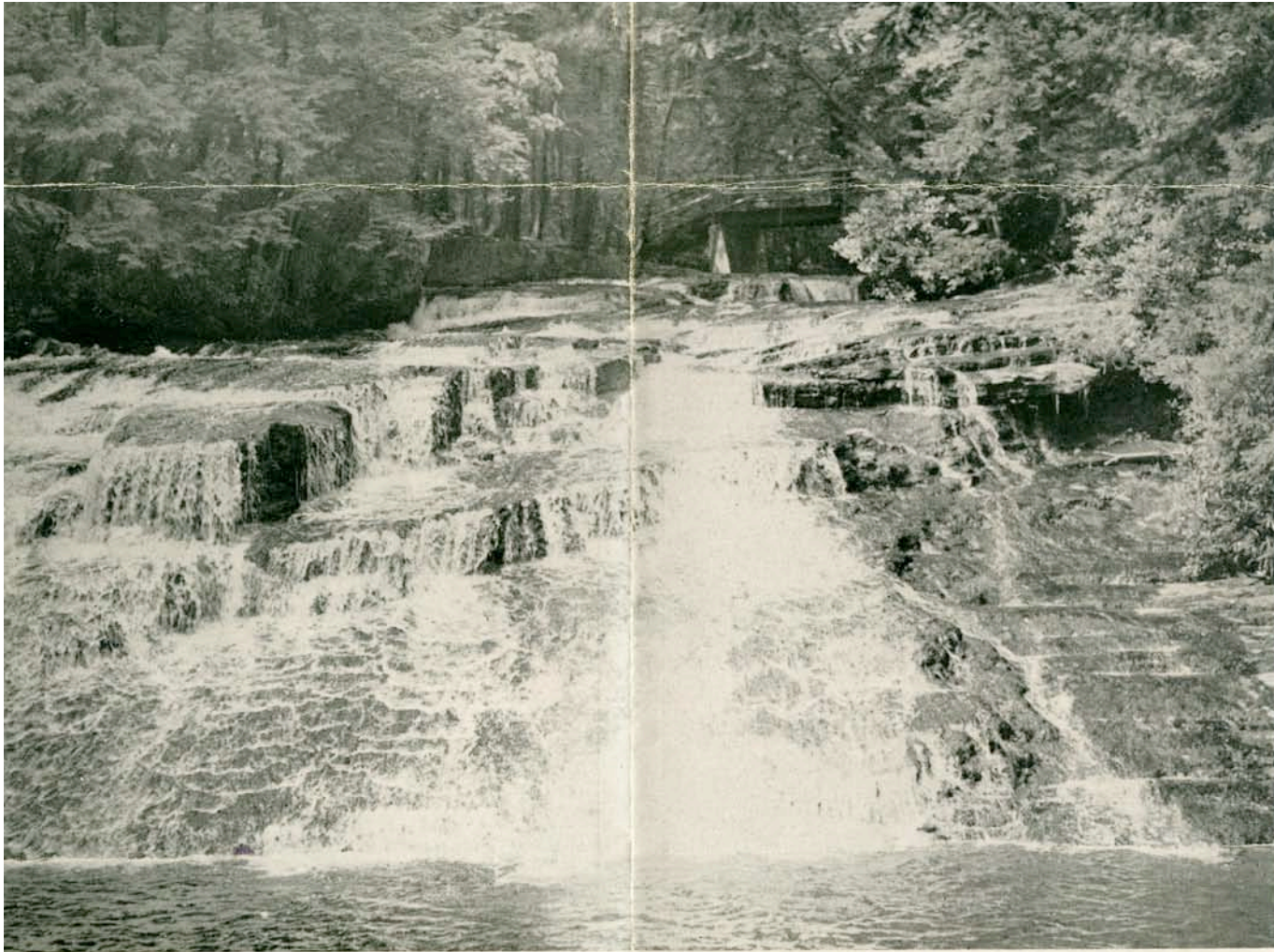


Gate Lodge, Entrance to Coffee Shop



Social Hall and Auditorium

PARADISE FALLS RESORT IN PENNSYLVANIA'S POCONOS



An Association with a Purpose **PARADISE FALLS**

Nestled in the Poconos

In 1922 a group of Lutherans interested in the establishment of a summer colony with a wholesome Christian background and environment organized the Paradise Falls Lutheran Association in the Pocono Mountains of Pennsylvania. Its guest lists include Christians of all of the denominations, who enjoy its good fellowship, healthy environment, wholesome tone, and religious auspices. Membership entitling a member to a 100 x 125 lot for use for building of a private cottage, is limited by its Charter to members in good standing in a Lutheran Church. Sixty-five private cottages have been erected on the grounds. Some of these are rented each year to guests, through the Association.

Paradise Falls has a summer post office, a ticket office and stop for the Greyhound Bus, a grocery store, a coffee shop, a gift shop, and its own dining facilities. Paradise Falls Girls' Camp of 70 girls of six to sixteen is under very able leadership. Lake Crawford is a private lake for boating and swimming.

PARADISE FALLS LUTHERAN ASSOCIATION

Paradise Falls, Monroe Co., Penna.

Telephone: Stroudsburg 775 J 2

Greyhound Bus Stop: Paradise Falls

Lackawanna R. R. Stations: Stroudsburg,
or Cresco, Pa.

*[Our own station wagon will meet your
arrival if we are notified in advance]*

PARADISE FALLS has ever been of scenic interest to all nature lovers, as it is here preserved in its natural surroundings. Here artists paint its hidden beauties. Here the meditative finds meaning and power in the water's ceaseless movement.

Admission Fee, 25c per person. Free to guests and cottagers.
Tables and outdoor fire-places provided for groups.

PARADISE FALLS RESORT IN PENNSYLVANIA'S POCONOS

PARADISE FALLS

NESTLED IN THE POCONOS

Paradise Falls, Cresco, Pa.

PARADISE FALLS

is a restful place where Christian people can enjoy themselves each day as they choose, with variety of choice of activity, at reasonable cost.





PARADISE FALLS

A Pocono Mountain Resort

Located 1100 feet above sea level on the beautiful Paradise Valley trail, Route 90, ten miles north of Stroudsburg. Here Christian people can spend an enjoyable vacation at low cost.

**UNIQUE AND ATTRACTIVE
PLEASING ENVIRONMENT
HOME - LIKE ATMOSPHERE**

For rates, reservation and travel, address

**PARADISE FALLS LUTHERAN ASS'N
Paradise Falls, Pa. Cresco P. O.**

From October 1 to May 1, 39 Meehan Ave., Phila. 19, Pa.

Arthur K. Leberknight, Manager



Boat and Canoe Landing

**SPORTSMANS'
PARADISE**

Hunting and
Fishing in
season

**LAKE
CRAWFORD
PRIVATE
BATHING
BEACH**

Available
to guests
only

This gamy trout
caught in Lake Crawford, 1944
27 inches
7½ pounds



FOLKS, FALLS AND SPORTS ARE VERY NICE AT PARADISE FALLS

Scenic Beauty, Shady Nooks, Babbling Brooks

Here young and old may spend a delightful, healthful and invigorating vacation amid the beauties of nature. A fine congenial atmosphere where you can have all the good times that any other resort may offer, without the disturbing features often experienced elsewhere. The weekday evenings are devoted to entertainments of various kinds, games, musicals, lectures, strawrides, dancing.

Movies Wednesday and Saturday

RECREATION

Boating, Swimming, Tennis, Hiking, Quoits, Croquet, Shuffle Board, Nature Study, Volley Ball, Horse-back Riding, Playground for children. Golf four miles from Paradise Falls.

P. F. GIRLS CAMP

Ages 6 to 16 yrs. 8 weeks during July and August Offers campers a healthful outdoor vacation with trained leaders.

SUNDAY SERVICES

An outstanding feature. Services are held each Lord's Day at 10:30 A. M. and 7:30 P. M. Visitors are welcome.

Arrangements are provided for children who desire to attend a Sunday School session.

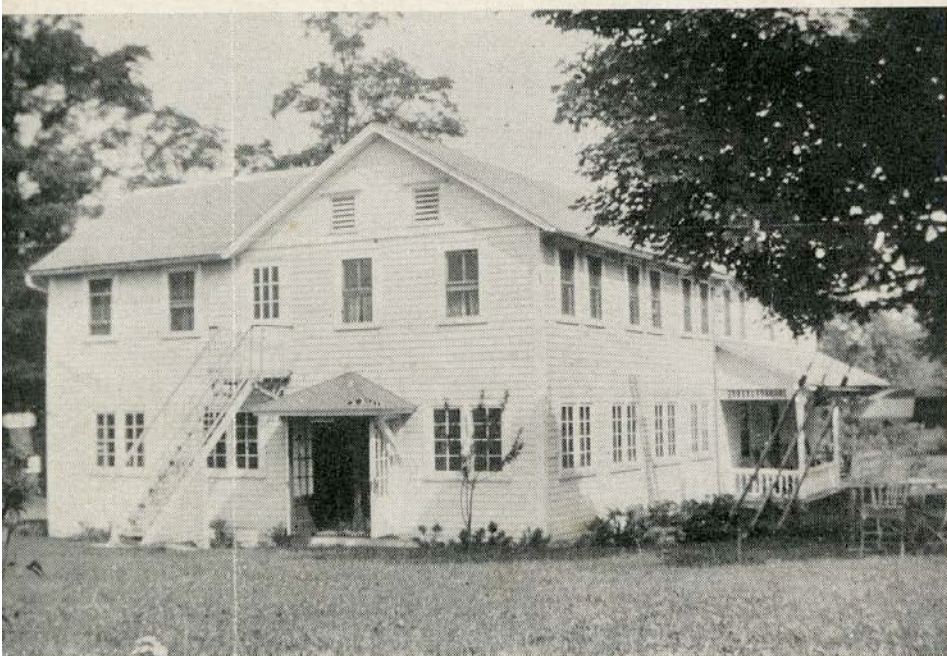
POINTS OF INTEREST

Buck Hill Falls	.6 miles	Bushkill Falls	17 miles
Mt. Pocono	6 miles	Delaware Water Gap	18 miles
Skytop	8 miles	Lake Wallenpaupack	28 miles
Deer Park	4 miles	Red Rock Falls & Glen	3 miles



VISTAS THAT LURE AND CHARM THE HIKERS





GATE LODGE

OFFICE

Guest rooms have running water

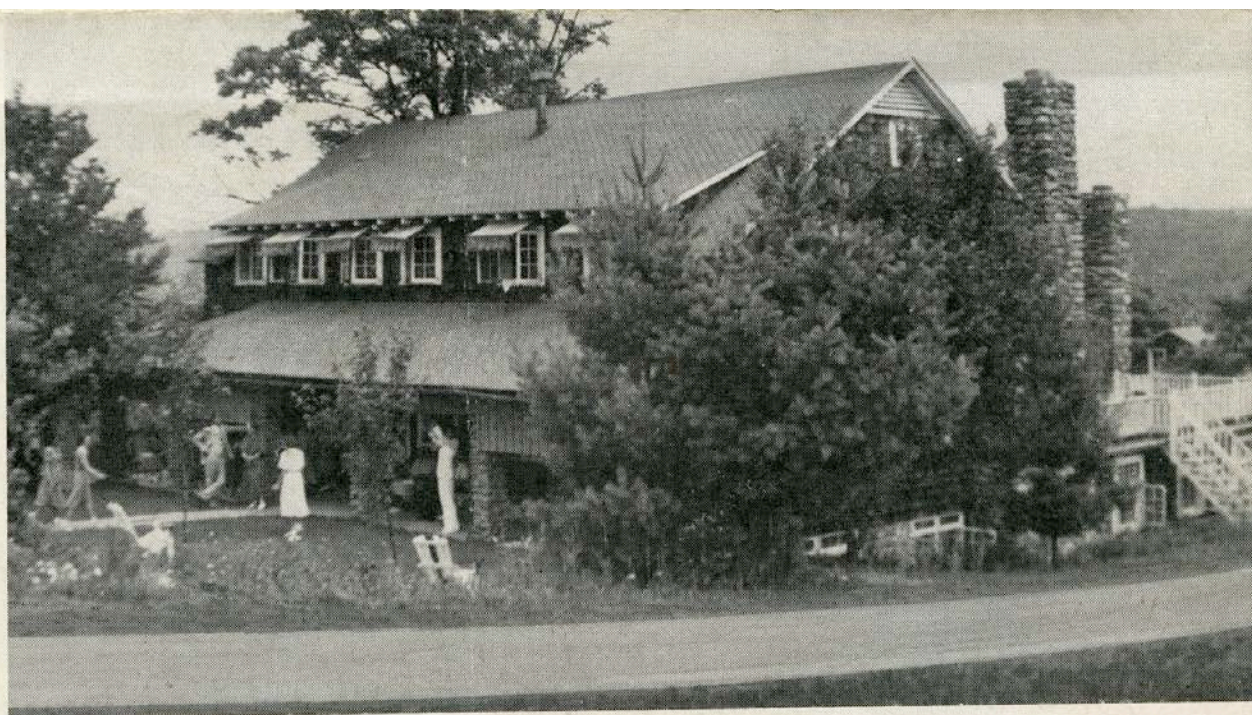
Gift Nook and
Coffee Shop



NESTLEDOWN
INN

HERE!

Vacation
Appetites
Are
Satisfied



Good Food—The most wholesome, and fresh vegetables, well prepared and good home cooked by a competent chef invitingly served. Renowned for good coffee and pure sparkling artesian well water
Sunday dinners served from 12:30 to 1:30. American plan.



Inn Lounge

Rustic Dining Room



THE MONTH
OF MAY IS
BLOSSOM
TIME

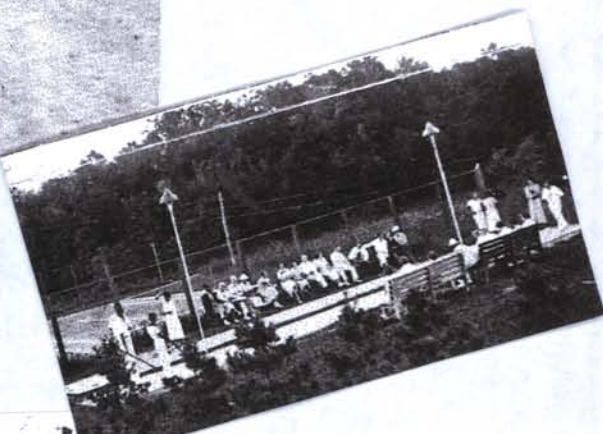


LAUREL AND
RHODODENDRON
IS JUNE AND
JULY



Road Leading to Falls

MID-1940's PHOTO COLLAGE



EARLY 1950's BROCHURES

PARADISE FALLS

LUTHERAN ASSOCIATION
Paradise Falls, R.F.D., Cresco, Pa.
"A Resort in the Poconos"

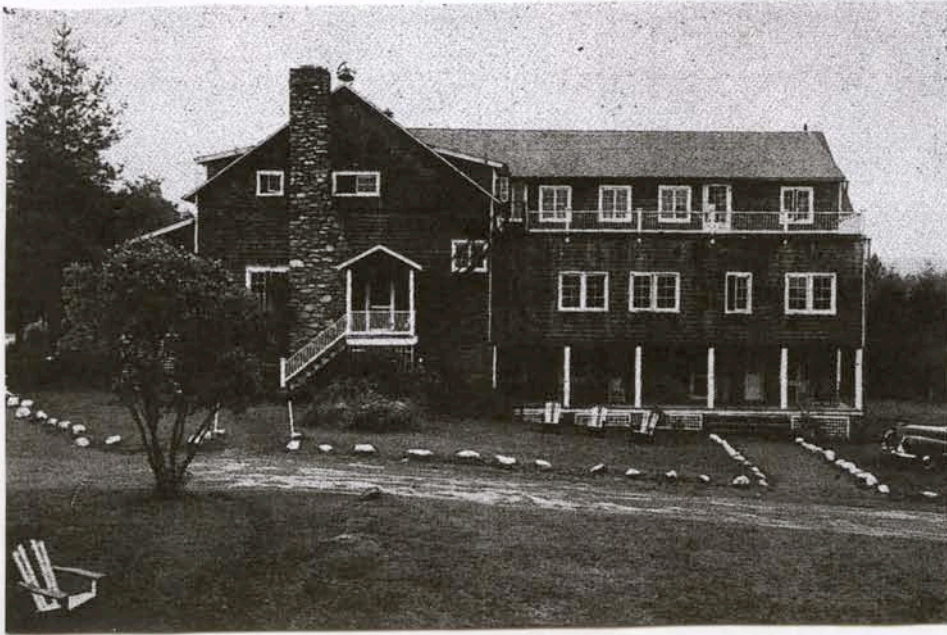
This above-the-Falls bridge carried
hikers and girl camper horse back
riders across our stream UNTIL -----
1955 HURRICANE DIANE sent all but one
cement pillar to the bottom of our Falls!



PARADISE FALLS RESORT

10:32

1952



The early 1950s brought "hard times for P.F. because nicer resorts and camps kept P.F. reservations low and finances - very strained. These brochures showed Social Hall Nestledown & Gate lodge in their finest condition, but by 1954 all but cottage operations had to cease.

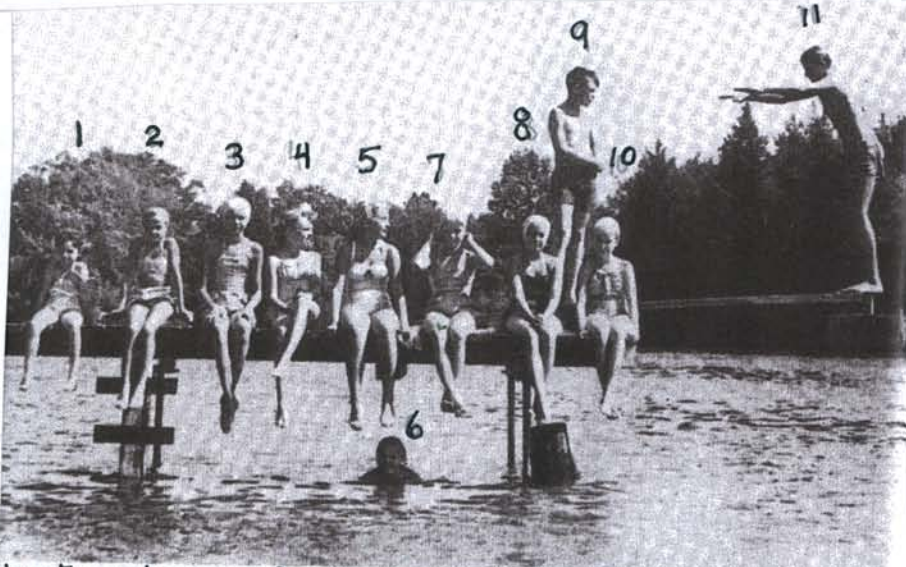


PARADISE FALLS

*Paradise Falls,
Cresco, Pa.*

1954? same photo
NESTLED IN
THE POCONOS

1952



1 Cathy Eisenberg, 2 Carole Ammon, 3 Betsy Kidd, Betsy Ziegler 5 Guest
6 Ann Scholl, 7 Miggy Kidd, 8 Freda Ammon 9 Jim Davis, 10 Carol Eisenberg
11- Verner Eglit



Section of the Nestledown Dining Room

The transition into becoming a cottage colony meant many changes and lots of volunteerism.

THE 1955 HURRICANE DEVASTED SPIRITS AND SET PROGRESS BACK DECADES!

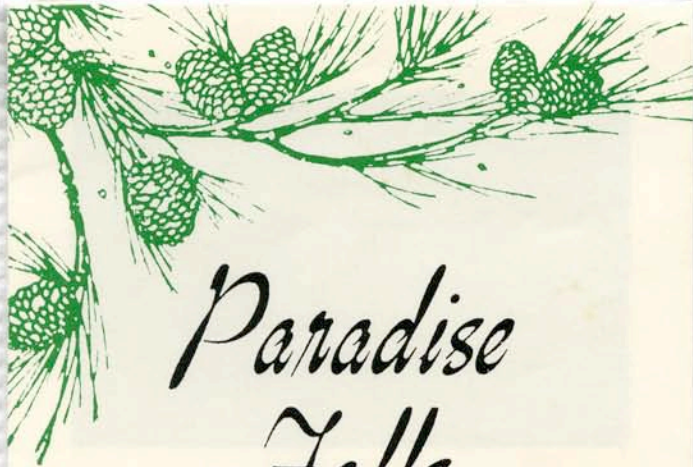


Nestledown Lounge



Nestledown, where happiness is provided three times each day

@ 1982 (60 Anniversary)

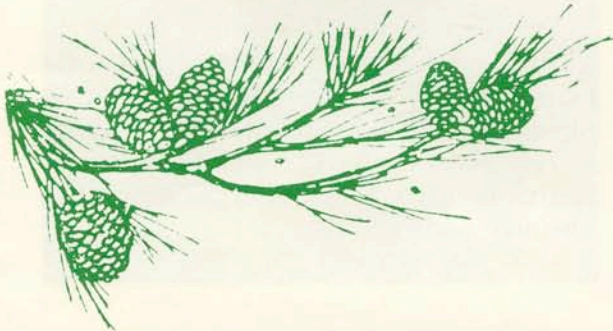


Paradise Falls



A Lutheran Cottage Colony Est. 1922
R.R. #1 Cresco, PA 18326
717-629-0442

**Just 100 miles
from - work
noise
tension
megapolis**



Dated activities:

There are picnics, cycling, square dancing, hymn sings, penny auctions, races, softball, crafts, brunches and Sunday services.

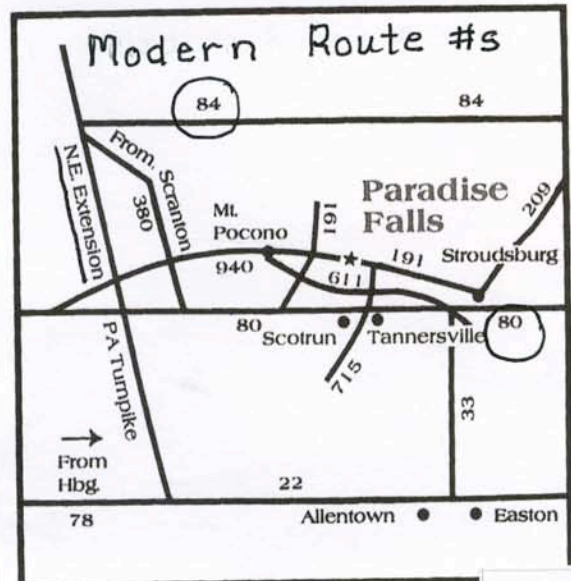
You can swim or bask in the sun, play tennis and shuffleboard.
Some members play bridge, others do needle work.
Still others build sand castles.
Or you can snooze in the shade.

"Lutheran" on sign



425 acres

87 Cottages



10:35



To be a member of Paradise Falls Lutheran Association and own one of 87 cottages, you will share in 425 acres of woodlands, trout stream, lake and wildlife to help you relax and feel good.



You can fish in Crawford Lake or in Paradise Stream where many hungry trout are waiting. Or you can stroll along shaded paths spotting birds, searching for wild flowers, or harmonizing with the soft babble of the stream.

When you invest in a membership and cottage at Paradise Falls Lutheran Association, you are acquiring much more than four walls, a roof and a fireplace in the Poconos.

You are investing in a community of fellow Lutherans who for more than 60 years have preserved a retreat from the woes of urban living.

Some have chosen to retire to the peace and beauty of Paradise Falls.

There is a rumor that the air and water of Paradise extends one's life.

Paradise Falls is available year round. How and when you enjoy your membership is up to you.

But enjoy it you will.



You can feed deer, birds, rabbits and other wildlife.

Or you can study and photograph them.

Or you can hunt them within the regulations set by the Pennsylvania Game Commission.



You can swim or bask in the sun, play tennis and shuffleboard.

Some members play bridge, others do needle work.

Still others build sand castles.

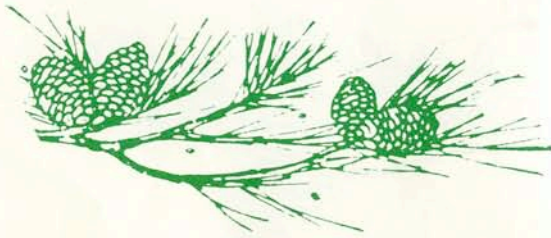
Or you can snooze in the shade.





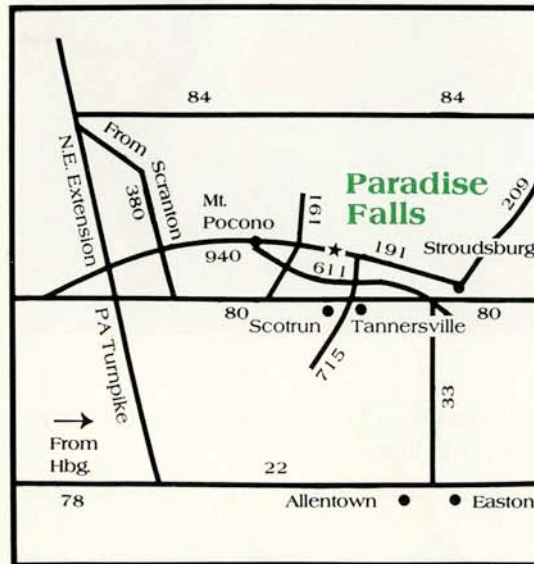
There are picnics, cycling, square dancing, hymn sings, penny auctions, races, softball, crafts, brunches and Sunday services.

The activities are many But



Paradise Falls is also a very private place for those moments or days when you want to be alone with your thoughts.

Paradise Falls - Easy to get to!



Use exits off Route 80 at Scotrun or Tannersville

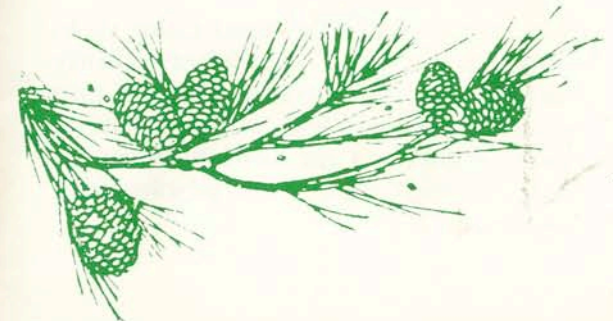


Paradise Falls



A Lutheran Cottage Colony - Est. 1922
R.R. #1 Cresco, PA 18326
717-629-0442

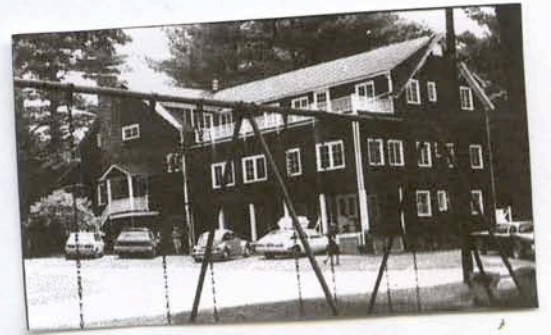
**Just 100 miles
from - work
noise
tension
megapolis**



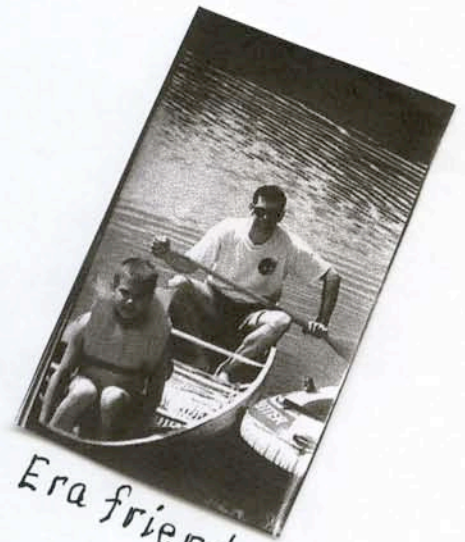
@ 1997 (75th Anniversary)



Mentions this era photographers



Playground near Tea Room



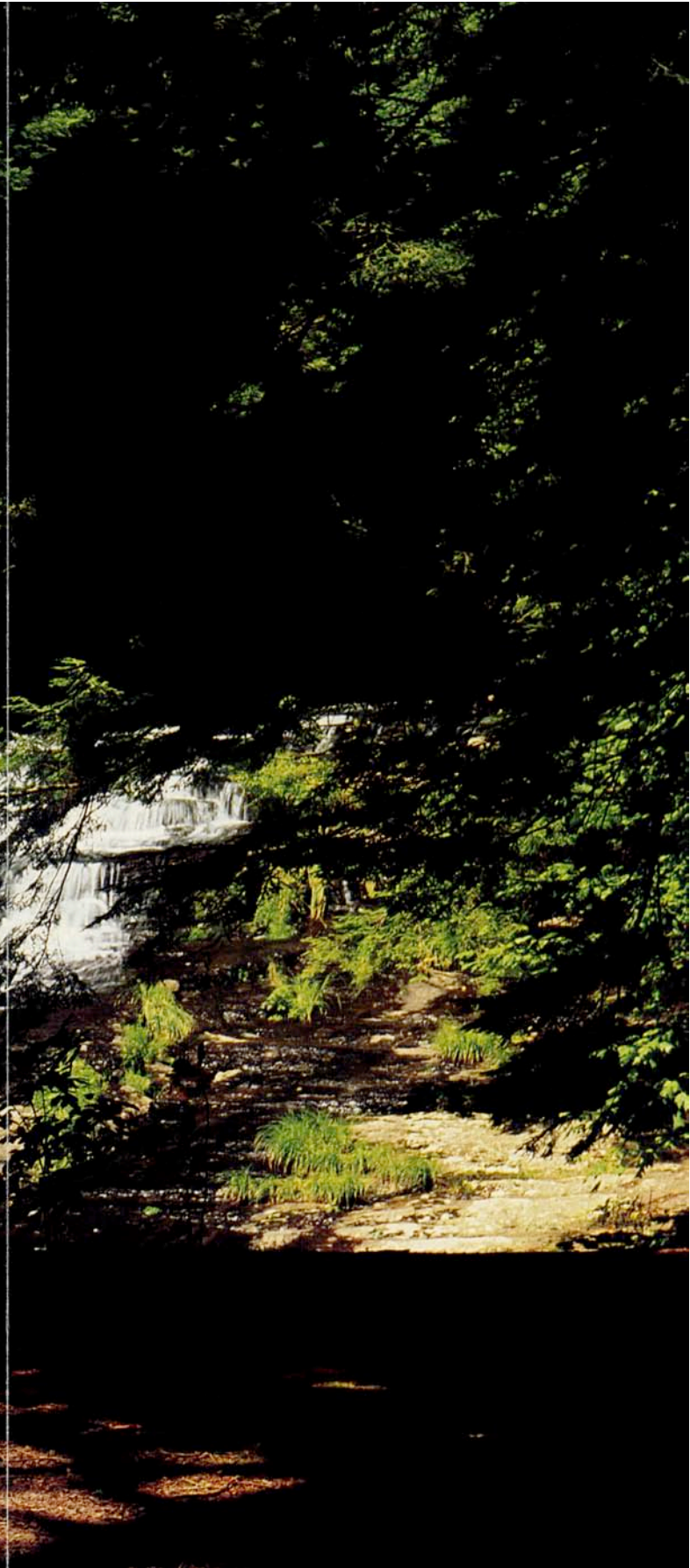
Era friends

Cottage sales emphasis



Back addition and caretakers stairs/porch

10:36

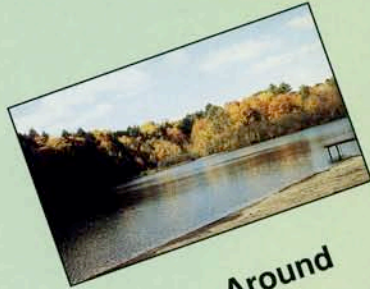




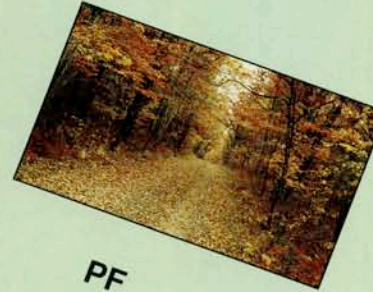
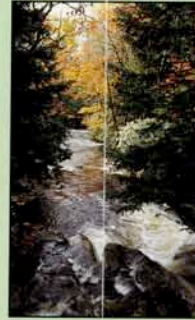
The Invitation

We welcome you to visit Paradise Falls and see for yourself what is here. The peak of PF's scheduled activities runs from the last weekend in June through Labor Day and includes church services, ice cream parlor, and lifeguard at the lake. You may take an accompanied tour of the grounds during any of the beautiful seasons of the year. In Spring, the woodland flowers bloom in profusion. Autumn provides a spectacular rush of reds and oranges across the lake and up the mountain. During the Winter, our frequent snows glisten and sparkle through the trees. PF also is near several well-known ski slopes with their varied opportunities.

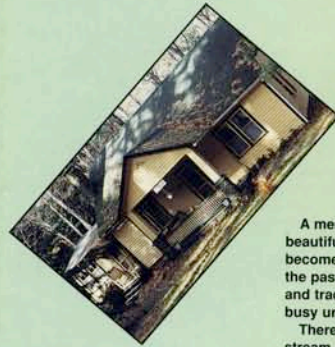
So... stop by... get to know us. Consider a commitment to PFLA as the retreat of choice from today's hectic pace.



Around



PF



A membership in PFLA allows you to acquire a dwelling in the beautiful Pocono Mountains of northeastern Pennsylvania and become part of a unique community of fellow Lutherans. For the past 75 years, a special blend of people, cottages, scenery, and traditions has been preserved, enabling a real escape from busy urban life and suburban strip malls.

There is something for everyone... a placid lake, babbling stream, picturesque waterfalls, and quiet woodland paths can all be private places for time to be alone. It provides the perfect setting to renew old friendships... gather with family. Or, swim in the cooling lake during the hot months of summer, enjoy tennis, volleyball, hiking, or shuffleboard. During our summer "season" a more complete program is announced in the weekly SPRAY.

First and foremost, this is a Lutheran community. Church services are held throughout the summer. There are also study groups led by the week's visiting clergy and others. The end of the season hymn sing, candlelight walk to the lake, and closing service on the beach are special moments to treasure.



A
p
p
l
y
i
n
g

f
o
r

M
e
m
b
e
r
s
h
i
p

Paradise Falls Lutheran Association is financed primarily by annual membership dues. If you are a Lutheran in good standing at your local congregation, you may contact PFLA's Membership Committee and initiate the application process. A Membership Certificate is issued upon approval by the Board of Directors and receipt of the established entry fee. You are subsequently entitled to use the lot and all the Association's facilities, and own the cottage on the lot you have chosen from those currently available.

Photos by: Fred Shultz, Dennis Hughes, & Diane Snear



@ 2012 (90th Anniversary



*Paradise Falls
Lutheran
Association*



Absence of "Lutheran"

What you'll find there

For nearly 90 years, families have made Paradise Falls their vacation home, and in some cases, their permanent home. 87 year-round and summer cottages are nestled on 450 wooded acres. Hiking trails lead to the waterfall and picnic pavilion ... or nowhere in particular.

- Mentions - Camel back, Crossings
- Special Cottage Sales Phone #
- Primrose Dr address



570-730-4289
Visit us online. www.pfla.org

Website

10: 37



Church service in Social Hall



Ice cream and penny candy in the Tea Room

PFLA

*Membership in
Paradise Falls Lutheran Association
offers tranquility, friendship and a little
taste of Paradise.*

Memberships are currently available.

**For information about
cottage/membership sales,
contact**

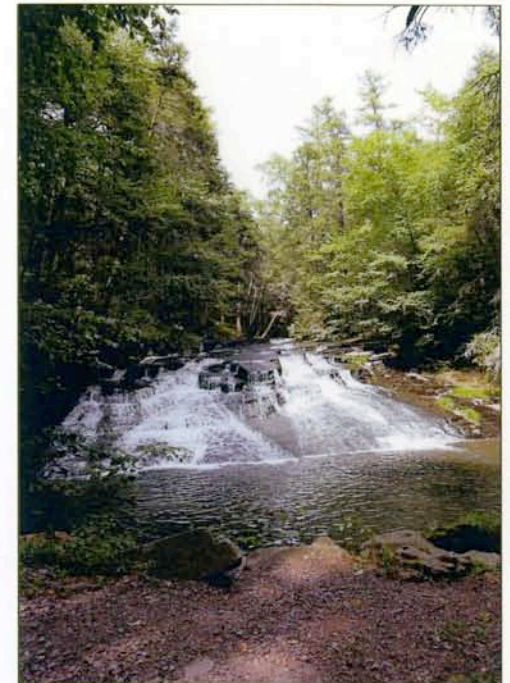
Membership Committee
146 Primrose Drive
Cresco, PA 18326

570-730-4289 *Conner*

Visit us online. www.pfla.org



Welcome to Paradise!



*Paradise Falls
Lutheran
Association*



PFLA Social Hall

Where you'll find Paradise

Located between Mt. Pocono and Stroudsburg, Pennsylvania, PFLA is only about 90 minutes from New York and Philadelphia.

This hidden gem is a short drive to Camelback Mountain Resort ski area and Camelbeach Waterpark, the Crossing Outlets, and the Delaware Water Gap National Recreational Area. Numerous public golf courses are nearby

What you'll find there

For nearly 90 years, families have made Paradise Falls their vacation home, and in some cases, their permanent home. 87 year-round and summer cottages are nestled on 450 wooded acres. Hiking trails lead to the waterfall and picnic pavilion or nowhere in particular

Paradise Falls Lutheran Association is one of the best-kept secrets in the Pocono Mountains

Play tennis, basketball, volleyball or shuffleboard. Visit the beach and swim, take out a kayak, canoe, paddleboard or rowboat. Watch children play in the sand, or simply relax in the sun.

Kids love the playground and everyone enjoys the Tea Room's ice cream.

Paradise Stream is stocked with trout for fishing, and during hunting season, members have hunting privileges on the grounds. During the summer season, Sunday church services are conducted by visiting pastors.



Picnic Pavilion at the Falls



Tennis and shuffleboard courts



The beach at sunset