

MEMORY

BOOK



PARADISE FALLS  
GIRLS CAMP  
PARADISE FALLS PENNA





# GIRLS CAMP HISTORY

(1931 - 1952)

Copyright



# SUMMARY

## Paradise Falls Girls' Camp

by Arlene C. (Ulrich) Sauerwein

At a Paradise Falls Lutheran Association Meeting, April 25, 1930, a motion was made to start a Girls Camp to be erected near the edge of the woods, by the creek on the left side of the Athletic field. On June 23, 1930, it was authorized to build 3 cabins which would house 7 girls and one girl in charge. It was agreed to dedicate the camp on July 4, 1930 with Rev. Peter Wohlson to deliver the address at camp site. Mr. Brockelhurst presented the American Flag to be used at the camp.

At a meeting of the Association on June 29, 1931, Mrs. Laura Miller Blithe reported a total of 11 campers with the prospect for more in the next week. Mrs. T. Mikuriya was engaged as Camp Directress and Miss Norma Wolf as the first Volunteer Counsellor and two more to report as soon as more reservations were received. The Camp opened July 1, 1931.

My memories of PFG are many, having been a camper during the early years of the camp. We had many activities, such as tennis, crafts, horseback riding,

swimming. When the camp first started we had our swimming instructions at the base of the falls, later other accommodations were made, and finally a lake was built in 1939. We were known as the "sister-camp" to Camp Miller, the boys Ministerium Camp, at Shawnee-on-the-Delaware, and we often had exchange programs with them. This was a "highlight" of the Campers' experience.

It was fun to walk each meal-time over to Nestledown (the Bradleys' cottage, now) and we were always hungry. One meal which was my favorite was "creamed ground beef on Parker House rolls, for breakfast!!

My memory is rich with companionship of the girls and the leadership of the Counsellors, particularly Miss Helen Buckwalter (Miss Bucky).

PFG grew each year and was enjoyed by many girls. However after Camp Hagan was started near Camp Miller, our attendance was so small that it was decided to close the camp in 1952.





# COME TO PARADISE FALLS THIS SUMMER



*Lake Crawford, showing bathing beach and boat dock*

A Beautiful Setting in  
Pennsylvania's Vacationland  
in the Pocono Mountains

## PARADISE FALLS

A restful place where Christian people can enjoy themselves each day to the full, with variety of choice, at reasonable cost.

700 acres of forest, field and stream for the nature lover — picturesque drives for the motorist — congenial comradship for youth and older folks — playmates for children — comfortably cool evenings.

*Varied Day and Evening Planned Recreation*

*Well-Balanced and Tasty Meals at Nestledown*

*Sunday Services in Social Hall Auditorium*

*All Modern Conveniences Throughout.*

For rates, reservations and travel information, write to

*Paradise Falls Lutheran Association*

PARADISE FALLS, Monroe Co., Penna.

Telephone: Stroudsburg 775 - J 2



### *Paradise Falls Girls' Camp*

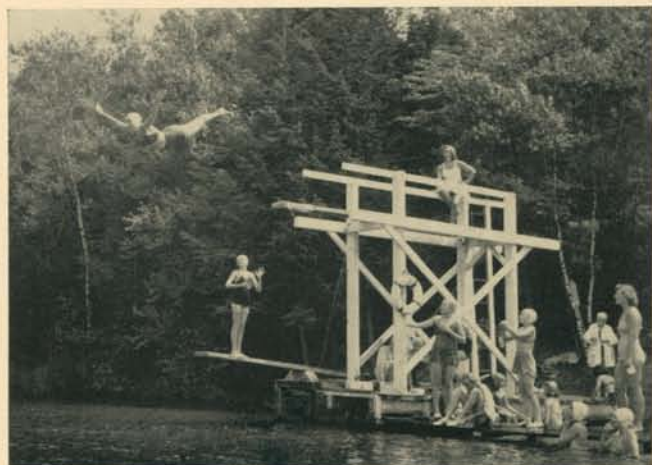
For girls 6 to 16 years

Enrollment limited to 70

Well-trained Camp Leadership

Horseback Riding under supervision

Send for Descriptive Booklet



*High Dive at the Girls' Camp Beach*





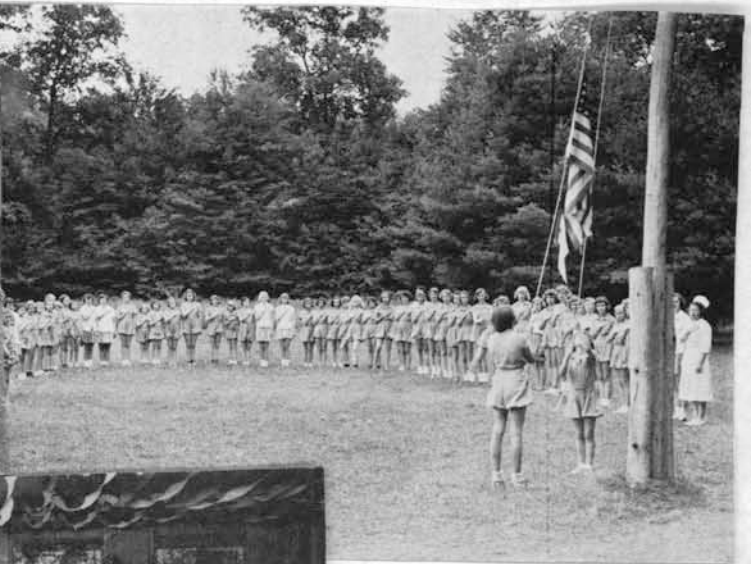
Camp lodge - inside



Camp lodge - outside



Hayrides



Campers' private dining room at Nestledown →



Girls worked up appetites walking to Nestledown for meals, last night banquets, rainy day activities



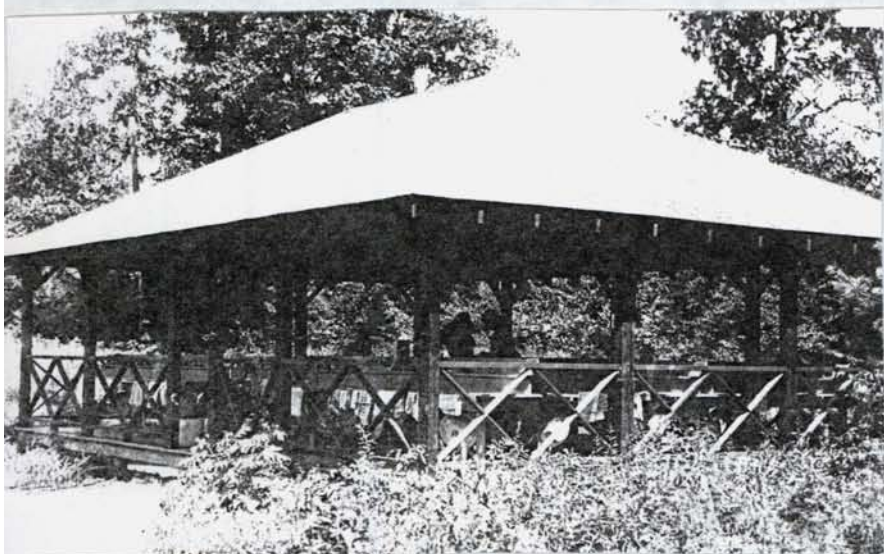
← Dramas sometimes used raft; boats, creative props, costumes.



PARADISE FALLS GIRLS CAMP 1931-1952



Screens and flaps against weather. 7 girls + 1 counselor for 1 week to 2 months!



Open air wash house, spigots into trough, and a basin with your # on it.



9 shady, clustered cabins-



Occasional "camping out" times



Crafts in partially covered shed





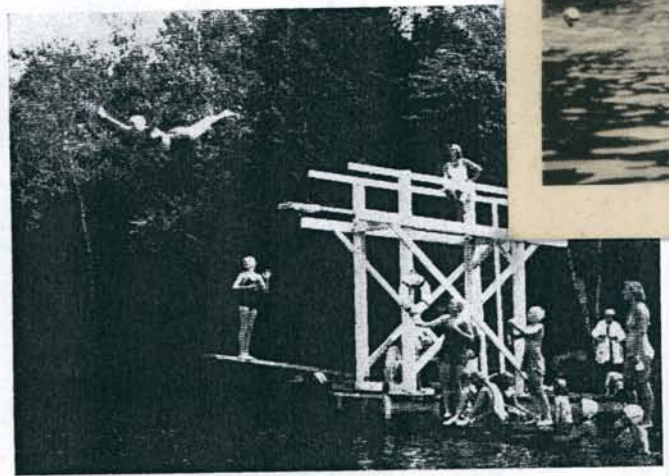
Swimming lessons and boating held first at base of Falls.

Note: diagonal shoulder-opposite waist ribbons

Second swim area was pond below present dam.



GIRLS' CAMP PARADISE FALLS LUTHERAN ASSOCIATION CRESCO, PA.



High Dive at the Girls' Camp Beach



Finally, the ultimate swim experience - the far side of beautiful Lake Crawford!



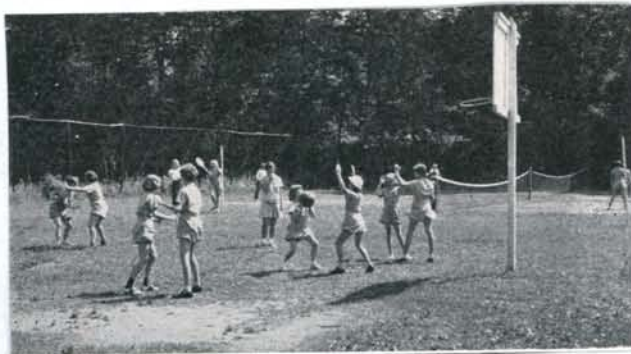


Formal uniforms - lots of pictures



Archery

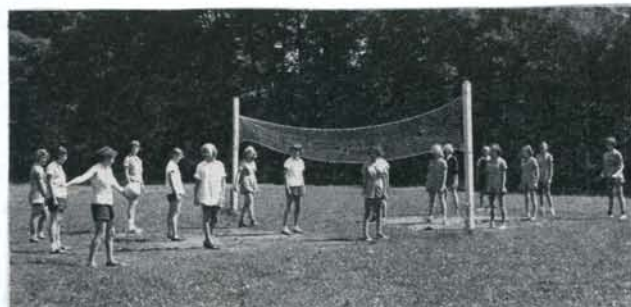
Campfires →



Basketball Court



Equestrian practice circle and riding all over P.F. land



Volleyball Court



Riding attire was on optional list of "things to pack for P.F.G. Camp."



Paradise Falls Girls' Camp Paradise Falls, Pa. Cresco P.O.

This tennis court was right at PFG campsite!



## PFG Girl Campers at P.F. Entrance.



In the late 1930's and 1940's P.F. girl campers rode the horses kept in the Abend Ruhe barn. Guests could also arrange trail rides around the grounds

This version of our store had customers get supplies through flap covered windows rather than physically enter the store.

The separate shed held the kerosene needed by members for heating and lighting.

The slanted stick may have opened and closed the entrance to collect tolls for trips to our Falls!



The Horse Bridge located above our Falls before 1955.

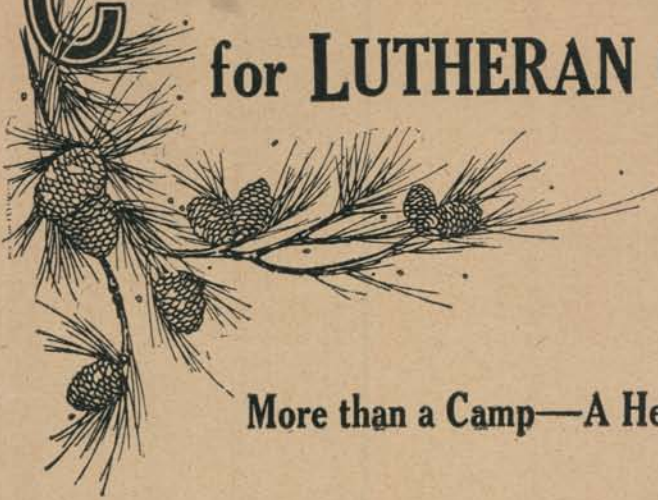


This narrow bridge got horses across the stream from the Girls Camp's far end above our Falls to trail ride roads up Summit Hill Road.

Diane, the Flood of 1955, washed all but one side's cement abutment to the base of our Falls. Horses and campers had stopped using it years before so this upper bridge was never rebuilt.



# CAMP PARADISE for LUTHERAN GIRLS



More than a Camp—A Health Resor

Located in Paradise Valley, near Henryville, Monroe County, Penna. Within a short distance of the Camp are beautiful Paradise Falls, Paradise Creek and Rapids noted for their grandeur. Many roads and paths lead through wooded places, lovely nooks and grand vistas over the hills, that lure the girls to hike or rest in the shade, and to enjoy all the wonders of God's great out-of-doors with its invigorating atmosphere.

*Inspires*

SELF-UNDERSTANDING	DEVOTION	LOVE OF NATURE
RESPECT	DISCIPLINE	DIRECTION

*Assures*

SAFE COUNTRY	TESTED WATER	WHOLESOME FOOD
COMRADES	PLAY AND ADVENTURE	

*Provides*

RELIGIOUS INSTRUCTION	PROGRAMMED PLAY	EXERCISE
REST	CAMPCRAFT	WATER SPORTS

OPEN FROM JULY 3 TO SEPTEMBER 2

Endorsed by Church leaders

*Send for Camp Literature*

Paradise Falls Lutheran Association Camp Committee  
Cresco, Pa.

A VACATION PLACE FOR THE WHOLE FAMILY



Paradise Falls Girls' Camp

Conducted by the  
Paradise Falls Lutheran Association  
Paradise Falls, Pa.  
(Paradise Valley near Henryville)

» » WHEN « «

» » WHERE « «

» » WHO « «

» » WHAT « «

» » WHY « «





From Saturday  
June 29th  
to Saturday  
August 24th

**W**HEN NATURE is at its best in the Poconos, Paradise Falls Girls' Camp entertains her guests. Although we recommend spending the whole season in camp, registrations are accepted for any number of weeks, but not less than one week.

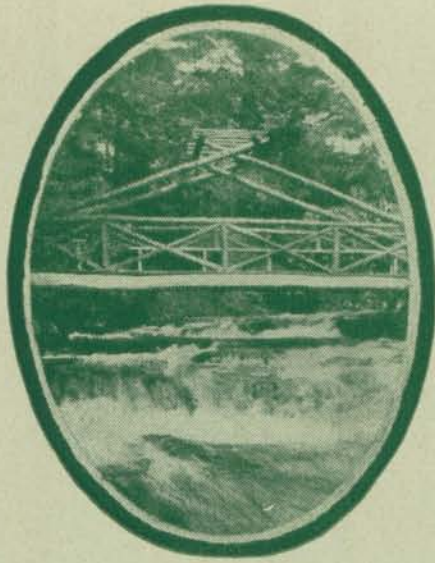
Because of the camp schedule, girls should arrive on Saturday prepared to enter the daily routine, which has been arranged so as to give her a full program of camp life every week.

In order to reduce interruptions with the camp program to a minimum so the camper will get the maximum benefit out of her camp experience, visiting by parents and friends is restricted to Saturday afternoons and Sunday.

The camp dates have been selected because the Poconos are at their best in this eight-week period. The laurel blooms still beautify the hillsides and the rhododendrons are bursting their buds. It is the season when the birds and trees and flowers are their best. During these weeks bright sunny skies make life in the open exhilarating and woody paths through lovely nooks leading to the grand vistas over the hills are most alluring. These are the most favored weeks in Pennsylvania's most favored garden spot.

» » **W H E N** « «





# P. F. G. Camp

**L**OCATED in the beautiful Paradise Valley of the world famous Pocono Mountains offers to our girls a site ideal for a summer in camp.

Although tucked away from the currents of traffic, P. F. G. Camp can easily be reached by train, bus or auto. If you come by train on the D., L. & W. Railroad or the Pennsylvania Railroad our station is Henryville, where the Association bus will meet you. In addition to meeting the trains, the bus will arrange to meet the through buses at Swiftwater when notified. If you come by auto from the south follow the concrete highway No. 90 from East Stroudsburg to Paradise Falls. If coming from the north follow the Lackawanna Trail (Route 611) to Mount Pocono, turn left and follow Route Numbers 615 and 90 through the beautiful mountain scenery to the Paradise Falls Lutheran Association reservation.

Ample parking space for visitors' cars is provided in the camp grounds. Campers are not allowed to have an auto at camp for personal use.

All mail should be addressed:

PARADISE FALLS GIRLS' CAMP,  
Paradise Falls, P. O. Cresco, Pa.

Telegrams should be marked:  
Paradise Falls, Stroudsburg, Pa.

Telephone calls should be sent to:  
Stroudsburg, Pa., 24R-2

» » **W H E R E** « «



## A Staff of Competent Trained Counsellors

**A**LL OF WHOM HAVE HAD EXTENSIVE TRAINING in camps for girls, will again be in charge of the various activities of the camp. By their character and ability the staff has built up such an enthusiastic clientele among the parents of our campers and the visitors to the camp that we have almost a 100% return of the campers of previous years who are still P. F. G. Camp material. No more convincing evidence of their efficiency can be given.

The personnel of the camp is composed of girls ranging in age from 8 to 16 years. The campers ranging in age from 8 to 12 years inclusive are assigned to the junior camp division and the girls 13 to 16 years inclusive to the senior camp division. By making these groupings congenial groups for work, play and cabin life are assured and programs best suited to these age groups can be promoted most satisfactorily.

For the sake of convenience and appearance campers are required to wear the prescribed camp uniforms at all times, except on special occasions designated by the Camp Director. These uniforms can be purchased from the "Tom Taylor Company, Scranton, Pa.," until June 15th, after which they can be purchased through the P. F. G. Camp office.

Every precaution is taken to guard the health of the campers. Every prospective camper must have a physical examination by her family physician one week before reporting at camp and must bring her medical report with her. The campers are housed in substantial cabins. Meals are served in the camp's private dining room at "Nestledown," the Association's dining hall, where only the most wholesome and tasty foods are served under the supervision of a dietitian.

Modern flush toilets have been installed as an additional safeguard against infections. Shower baths in ample numbers to accommodate the camp population are provided.

To join this group of healthy, congenial campers mail your reservation as early as possible to Paradise Falls Girls' Camp, Paradise Falls, P. O. Cresco, Pa.

The fee is \$12.50 per week, payable in advance, \$2 per week of which is payable at the time of the reservation.





**A**CTIVITIES DEAR TO THE HEART OF A CAMPER fill the hours of the days at P. F. G. Camp with thrills and happiness.

Swimming every day in the greatly enlarged swimming pool with instruction in swimming for those unable to swim and instruction in life saving for advance swimmers. Tennis and basketball for beginners and advanced players on the camp's own courts. Shuffleboard games on the camp's board for the less strenuous hour of recreation. Horseback riding over selected bridle paths. Arts and crafts under competent instructors. Dramatics in the open-air Woodland Theatre. Story-telling around the evening campfires. Ceremonial Council fires for the granting of camp awards. Nature study and nature hikes to make everyone at home in the great out-of-doors. Treasure hunts, games, stunts, picnics with their mirth and music. Special programs in the large new Recreation Hall for rainy days. Not a dull moment all summer.

The religious program includes daily morning and evening devotions, grace at all meals and religious instruction. On Sunday campers attend Sunday School and the services of worship conducted by the Association. All campers, regardless of denominational affiliation, must take part in the religious programs of the camp.

Eleven campers and a counselor form a cabin-family. The roomy cabins are equipped with electric lights, double-decker beds, springs and mattresses, but each camper supplies her own bedding and linens. Ample space is provided for suitcases and dresses.

It is suggested that arrangements be made to have the laundry sent home each week, but if that is not convenient it can be sent to the Stroudsburg laundry at a nominal fee.

As the food served is adequate, parents are requested to refrain from sending candy and food to the camp unless a sufficient amount is sent to supply the cabin-family.





## Open Air for Health and Vitality

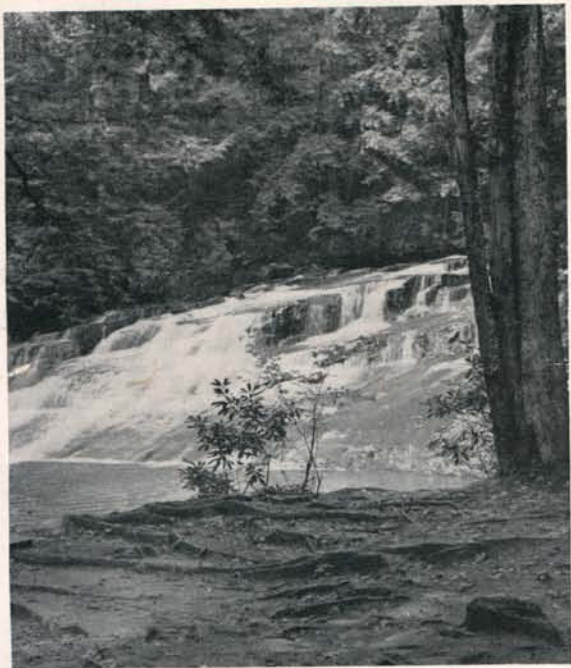
**A**FTER A YEAR IN SCHOOL the growing girl needs open air life to bring back health and vitality. Nowhere can this be done more effectively than at the P. F. G. Camp. Here are all the advantages of clean pure mountain air, of life in a small camp, where the picturesque Paradise Creek and the background of woody mountains furnish an ideal setting for the unfolding spirit of adolescence. In the more personal and intimate contact between a director of sterling character, counselors of experience and personality and campers carefully selected, the girls have a social advantage which is the distinctive feature of the small camp. Our enrollment is limited to 75 campers as a maximum.

In addition P. F. G. Camp offers to parents facing the problem of a son and a daughter to be sent to a camp a solution to their problem. Camp Miller, the large, well-known Lutheran camp for boys, is only twenty miles away and can easily be reached by auto over paved roads. Guest rooms at the Paradise Falls Lutheran Association offer ample accommodations for parents who have their children in camp. The parents can place their boys in Camp Miller, the girls in Paradise Falls Girls' Camp and they themselves can be the guests of the Paradise Falls Lutheran Association, thus enabling them to visit their children in camp easily while enjoying the weekend in the Pocos. Few are the camps so ideally located that they can offer such a threefold advantage to their friends at such reasonable rates with such excellent accommodations in such an ideal spot.





# PARADISE FALLS GIRLS' CAMP



Offers a well-balanced program under a carefully selected staff of counsellors to assist in the physical, mental, and spiritual development of girls from 6 to 16 years of age for leadership tomorrow.



## PLANNED ACTIVITIES

Activities dear to the heart of campers fill the hours of the day with planned group activities in:

- |                     |              |
|---------------------|--------------|
| Swimming            | Plays        |
| Diving              | Operettas    |
| Horseback, optional | Softball     |
| Tennis              | Shuffleboard |
| Baseball            | Hay Rides    |
| Archery             | Movies       |
| Hiking              | Camp Fires   |
| Dramatics           | Cook Outs    |
| Arts & Crafts       | Badminton    |
|                     | Volley Ball  |

## WELL-BALANCED MEALS

The camp's private dining room at Nestledown offers a variety of wholesome and tasty foods served under the supervision of an experienced dietitian and staff.

Milk and crackers are served in mid-morning to campers who are under weight.







**LIMITED REGISTRATION**

Paradise Falls limits its camp to 70 girls for more personal contact.

**SEASON—FEES**

June 28 to August 23

8 weeks .....	\$250
4 weeks .....	\$140
2 weeks .....	\$ 75

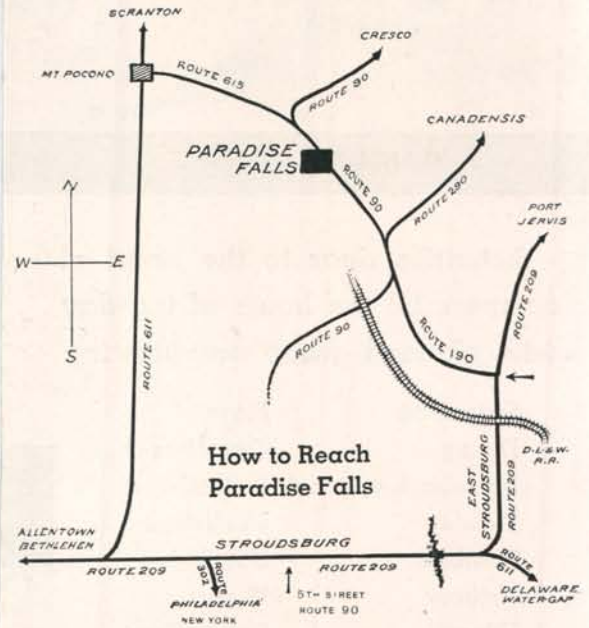
**ACCOMMODATIONS FOR VISITORS**

Parents and friends can be accommodated overnight or for a longer period in Gate Lodge, Nestledown, and guest cottages of the resort.

2, 4, or 8 week sessions

@ \$35 per week

**PARADISE FALLS  
GIRLS' CAMP**



Established as part of a summer colony on a 700 acre tract of the Paradise Falls Lutheran Association, Paradise Falls, Cresco, Pa.

**PARADISE FALLS  
GIRLS' CAMP**

For catalogue and further information fill out blank below, detach page, and mail to

Mrs. Anna M. Hauber  
1803 Porter Street  
Philadelphia 45, Pa  
Telephone after 4 P. M.  
HOward 8-2047

Name .....

Address .....

City ..... Zone ..... State .....

After June 15th, write to  
Paradise Falls Lutheran  
Association  
Paradise Falls, Cresco, Pa.  
or phone  
Stroudsburg 775J2





# Paradise Falls Girls' Camp

(under auspices of Paradise Falls Lutheran Association)

## Nestled in the Poconos



superb  
food

dramatics

swimming

arts  
and  
crafts

8 weeks

6 weeks

4 weeks

2 weeks

June 28 — August 23

athletics

Send for Descriptive Folder

horseback  
riding

Paradise Falls Lutheran Assn.  
Paradise Falls  
Monroe County, Pa.  
Phone: Stroudsburg 775 J 2

Directress  
Mrs. Anna Hauber  
1803 Porter Street  
Philadelphia 45, Pa.  
Phone: HOWard 8-2047  
Between 4 and 7 P.M.

and  
so much  
more





MISS EVELYN HALDEMAN  
Camp Director

# PARADISE FALLS GIRLS' CAMP

Operated by the Paradise Falls Lutheran Association

PARADISE FALLS, PA.

CRESCO, P.O.

PFG opens its seventeenth season on June 29, 1946, under the capable supervision of Miss Evelyn Haldeman, Elementary Education Supervisor of Abington Township, Pa., who has been associated with the camp for five years. A selected staff will assist her in giving campers every opportunity to develop mentally and physically in an environment that will assure a most healthful and enjoyable vacation.

The camping season opens June 29. Registrations will be accepted for the full season of eight weeks, or for the four week periods beginning June 29 or July 27. Camp closes August 24. Campers may enter only on one of the above entering dates. This assures the realization of the greatest possible benefit to the camper from her stay in camp.

Camp fee for full season is \$175.00; half season \$100.00, payable on or before date of entrance. Fees are not refundable in case of late arrival or early departure from camp.

Camp Visiting dates —

Sunday, July 7, 14, 21

August 4, 11, 18.

PFG will meet campers at railroad terminal at Stroudsburg or bus terminals in Stroudsburg or Swiftwater if advised in advance of time and place of arrival.

Paradise Falls Girls' Camp  
Arthur K. Leberknight, Manager.



# Paradise Falls Girls' Camp

Operated by the  
Paradise Falls Lutheran Association

*Paradise Falls, Pa.*

Monroe County



*The twenty-first season for  
this fine old camp for girls  
will open on Saturday,  
July 1, closing August 26*



MRS. ANNA HAUBER  
Camp Director

The Paradise Falls management is happy to announce the return of Mrs. Anna Hauber as Director for the '50 season. Mrs. Hauber has had fifteen years of camp experience, following graduation from West Chester State Teachers' College and post graduate courses at the University of Pennsylvania. She is at present teaching in the Philadelphia school system. She will be assisted by a carefully chosen and trained group of counsellors, one for each five campers, insuring for each camper the best in supervision and guidance.

Registrations are being accepted for the full season of eight weeks, or for the four week periods beginning July 1 to July 29.

Camp fee for full season is \$235.00, half season \$135.00, payable on or before the date of entrance. Fees are not refundable in case of late arrival or early departure.

Visiting dates—Sunday July 16, 23, 30; August 13, 20.

PFG will meet campers at railroad terminals in Stroudsburg or Cresco, or at bus terminals in Stroudsburg or Swiftwater if advised in advance of the time and place of arrival.

*Paradise Falls Girls' Camp*



**SPEND YOUR VACATION  
AT PARADISE FALLS**

Open from May 18 - Sept. 15

A unique and attractive Resort in the Poconos, 10 miles north of Stroudsburg, on Route No. 90. Here the whole family can enjoy a healthful, restful vacation in a Christian environment, amid the beauties of nature. Wholesome food, private lake, boating, movies, games and other entertainment.

For rates, reservation, transportation, address:

Paradise Falls Lutheran Association

PARADISE FALLS, PA. (Cresco, Pa.)

Arthur K. Leberknight, Mgr.

**PARADISE FALLS  
GIRLS' CAMP**

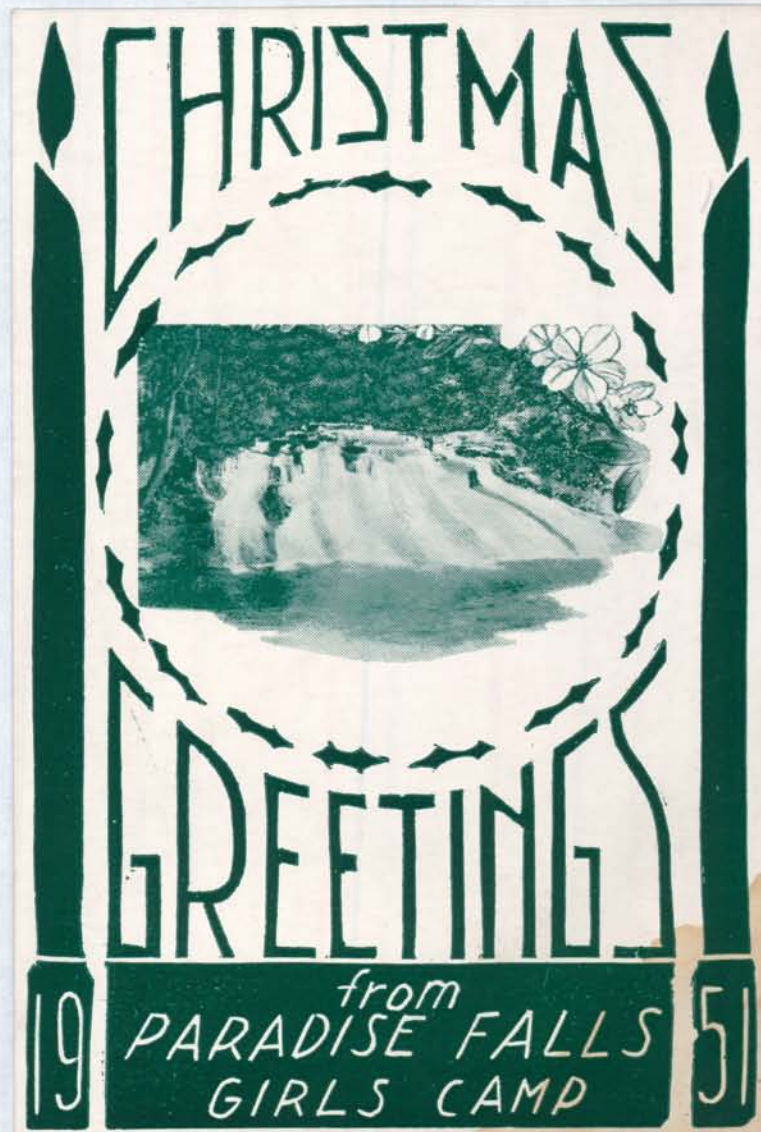
*Situated among the pines near the beautiful Paradise Falls*

17th Season open June 29 - August 24

Juniors and Seniors, ages 6-16. A Counsellor for every five girls. Selected Staff, Planned Program, Good Wholesome Food, Private Lake, Riding, Swimming, Crafts, Hikes and other sports. Four Weeks, \$100; Eight Weeks, \$175. Catalogue. Address:

Paradise Falls Girls' Camp

**WANTED — Counsellors for Paradise Falls Girls' Camp.** Located in Pocono mountains and operated by Paradise Falls Lutheran Assoc. Write, giving details, to Miss Evelyn Halde- man, Southampton, Pa.





## REGISTRATIONS

APPLICATION blanks with the \$10.00 registration fee should be sent in as early as possible. No camper will be accepted for any term after the limit of 70 has been reached. Campers are enrolled for the season of eight weeks or for either the first four-week term or the second four-week term.

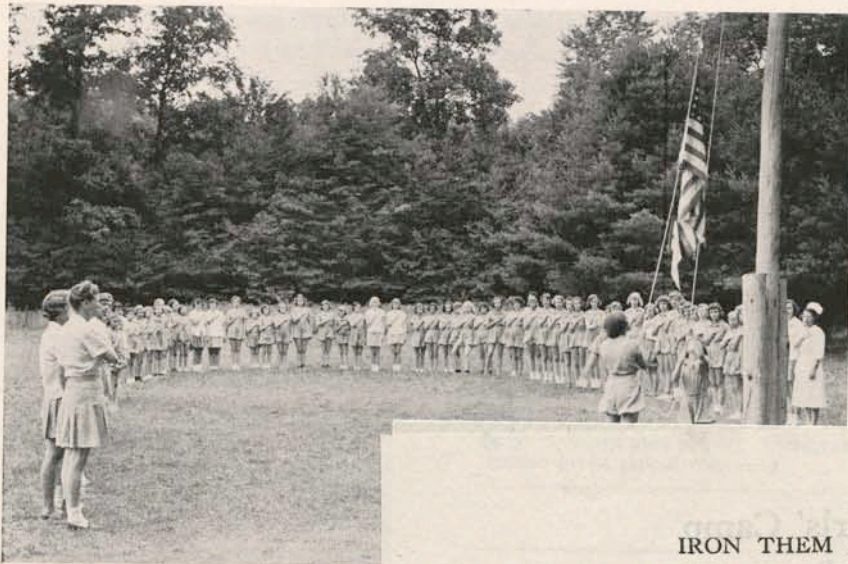
Tuition fees as noted in the enclosed circular are payable in the month of June. This is to avoid confusion on day of arrival. Riding is extra as well as the cost of materials in Arts and Crafts. All payments of fees and canteen deposits are made at the camp office upon arrival.

Canteen deposits are funds deposited with the camp to cover costs of riding, crafts, and other incidental spending as mentioned on inside of front cover.

THE CAMP has made arrangements with an old established insurance company to grant insurance coverage to the camper during her stay in camp at a very nominal premium. See special notice on inside back cover

## DAILY ACTIVITIES

7.00	Reveille (morning dip optional)	12.45	Canteen.
7.25	Flag Raising and Morning Devotions.	1.00	Mail.
7.45-8.30	Breakfast.	1.30-2.30	Quiet Hour. (Sundays 2.00 to 3.00 o'clock)
8.45-9.45	Bunk Duties — Special Duties.	3.00-3.30	Swimming.
10.00-12.00	Activities (Baseball, Nature Study Arts & Crafts, Swimming, Dancing, Dramatics, Volley Ball, Tennis, etc.)	4.00-4.45	Hobby Hour.
12.15	Dinner	5.15	Supper.
		6.30	Flag Lowering.
		7.15	Organized Games.
		8.00	Evening Programs.
		8.45	Vespers.
		9.00	Taps.



### IRON THEM ON OR SEW THEM ON

?????

You must definitely specify that you desire Hot Iron Name Tapes or you will not receive that kind. However, be warned that not everyone should use them. While it is true that sewing on name tapes takes considerable time, it is true that anyone can do it and do it well. No skill is required. Pressing on Hot Iron Name Tapes by using a hot flat-iron saves a great deal of time but it does require some skill. The iron does have to be hot enough but it must not be too hot. Hot Iron Tapes are not for use on rayon, silk, or knitted goods unless the tapes are sewed on instead of ironed on.

Camp Information  
Booklet

70 girl limit  
Horseback riding

Canteen

Uniforms

7am - 9pm



# Paradise Falls Girls' Camp

Paradise Falls, Pa.

## HAVE YOUR NAME ON ALL YOUR BELONGINGS

Please remember that where you are to be there are others who have clothing and other articles very similar or exactly like yours. To avoid confusion, loss, and disagreements, it is NECESSARY that you have your name on nearly everything you own. The best method is to attach Washproof Name Tapes obtained from Sterling Name Tape Co., 1305 Station St., Winsted, Conn. Direct-by-mail prices are 65 cents for 50; \$1.00 for 100; \$1.35 for 150; and \$1.70 for 200, all alike in each case. Prices in stores have to be considerably higher. Of course there are some things to which you cannot attach name tapes but be sure to put your name on by some suitable method and where it can be found easily.

*Fold sheet sharply here, tear off and mail lower part*

**Sterling Name Tape Company**  
1305 Station Street, Winsted, Conn.

Amount enclosed..... Date.....195.....

Promptly fill this order for Washproof Name Tapes Style 16

Quantity..... Name.....

Black  Red  Sew-on  Hot Iron

Send to.....

Address.....

Write very plainly or your order will be delayed. Four days needed to fill orders.  
Allow time for transportation. Postage stamps acceptable. Do not send silver. C 50

## THINGS YOU WANT TO KNOW

**LOCATION:** At Paradise Falls in the Paradise Valley of the Poconos on the reservation of the Paradise Falls Lutheran Association. 1,000 feet elevation.

**MAILING ADDRESS:** Paradise Falls Girls' Camp, Paradise Falls, P. O., Cresco, Pa.

**SHIPPING ADDRESS:** P. F. G. Camp, Paradise Falls Lutheran Association, Cresco, Pa.

**TELEPHONE:** Call Stroudsburg, Pa., and ask for the Paradise Falls Lutheran Association.

**TELEGRAMS:** Paradise Falls, Stroudsburg, Pa.

**SIZE OF CAMP:** Limited to 70 campers. One counsellor to every five girls.

**AGE:** Junior Camp, 6 to 12 years inclusive; Senior Camp, 13-16 years inclusive.

**Leave Camp—**Visiting Sundays only with parents between 1:00 and 5:00 o'clock.

**WHAT TO BRING:** Consult the accompanying equipment list. Be sure to mark everything plainly. The Camp is not responsible for lost articles. In order to facilitate the checking of young camper's equipment at the time of arrival and departure, parents are requested to supply the cabin counsellor with a duplicate of the camper's equipment list on the day of arrival.

**UNIFORMS:** Worn on all occasions. Must be ordered through the camp office specifying number and size of uniforms desired. Check in full must accompany each uniform order, cost of uniform is \$4.00.

**COUNSELLOR-IN-TRAINING COURSE:** An attractive special feature offered to the older campers without extra charge.

**SPENDING:** Not more than ten cents per day for candy or ice cream. Toilet articles, writing paper, stamps, magazines, &c., are extra and are not included in the ten cents a day for spending allowance. Special permission must be given to allow the purchase of souvenirs and gifts. No canteen credit will be extended to a camper without written permission from parent stating the amount of credit, if any, to be extended to the camper.

**CAMP BANK:** No money allowed in bunks. All money must be deposited in the Camp bank. Failure to do this is considered ample grounds for expulsion from camp.

**VISITING DAYS:** Visiting Sundays.  
**AUTOS:** No camper is allowed to have an auto in camp. Counsellors only by special permission.

**LAUNDRY:** Can be sent home or cared for by regular laundry service at camp at reasonable rates.

**PARENTS:** Accommodations for parents can be had in the restful rooms and the attractive dining room of the Association at moderate rates, but reservations should be made in advance.







## EQUIPMENT LIST

A standard uniform in green and white is to be worn on all occasions.  
Further information in the accompanying folder.

Warm apparel is necessary for mornings and evenings.

Bring suitcases rather than trunks for convenience in storing.

### NECESSARY ARTICLES

I. PERSONAL EQUIPMENT	
Playsuits	Slacks—Overalls
3 uniforms	Warm pajamas
2 dresses	Swimming suit (2)
1 heavy sweater or jacket	
1 light sweater or jacket	
Riding breeches	Bathing cap
Anklets	Rain coat and hat
Underclothes	Umbrella
Handkerchiefs	1 laundry bag
1 bathrobe	Sewing kit
Writing material	Flashlight
Bible	

### II. FOOTWEAR

Bedroom slippers	Bathing shoes
2 pr. shoes (minimum)	Rubbers or galoshes
Tennis shoes (rubber sole and heel)	

### III. BEDDING EQUIPMENT

4 sheets	4 heavy blankets
2 pillow slips	1 pillow

### IV. TOILET ARTICLES

4 bath towels	Soap, tooth brush
4 wash cloths	Tooth paste, comb
	Nail file

### DESIRABLE BUT NOT NECESSARY

Musical Instruments, Costumes, Tennis Racket and Balls, Camera.

HAVE NAME ON ALL BELONGINGS—SEE ENCLOSURE.

### CAMP UNIFORMS

To add to the distinctiveness of P. F. G. camping days the Camp Committee has adopted a standard one piece camp uniform in green and white, which is to be worn at all times, except on special occasions which will be designated by the Camp Director.

All uniforms must be ordered through the P. F. G. Camp office. Price of uniforms is \$4.00. To prevent disappointment, uniforms should be ordered at least one month before the camper expects to arrive in camp. A camper should have at least three uniforms.



# OUTSIDE GROUP RECOMMENDATIONS

## A MESSAGE

to

## PARENTS

The wartime vacation problem of children is more acute in this third year of America at war than ever before in the long history of Ask Mr. FOSTER's summer camp service. With this fact in mind, we made special effort to select the camps which would help you to resolve this problem in terms of present-day needs. In ordinary years, even in some of the best camps, enrollments could be secured at "the last minute". This is a year, however, in which a decision should be made at the earliest possible moment.

The summer camps which we recommend in this little directory are continuing, in the face of all the difficulties of wartime operation, the fine tradition of the Summer Camp, that its inestimable benefits in health- and morale-building may be available to your children in these critical times. Even if you are not planning a family vacation this summer, give your child the advantage of a summer at camp.

Among the programs of the camps listed on the following pages you will find every phase of camp activity and many new wartime additions such as child care, victory gardening, care of farm animals, etc. In all of them are assured superb outdoor activities which will return your child to you at the end of the summer renewed and re-created.

Complete information on these camps is listed in every Ask Mr. FOSTER office from coast to coast. We cordially invite you to visit your nearest Ask Mr. FOSTER where we will gladly consider your child's individual requirements and recommend the camp best suited to your needs, putting you directly in touch with the Camp Director and, when your decision is made, securing proper transportation to get your child safely to the camp of your choice.

School and Camp Department

**Ask Mr. Foster Travel Service, Inc.**  
30 Rockefeller Plaza, New York 20, N. Y.

## PARADISE FALLS GIRLS' CAMP

Fifteenth Season

Located at beautiful Paradise Falls, one of the scenic spots in the Pocono Mountains, 10 miles above Stroudsburg, on Route 90. 100 miles from New York and Philadelphia. Offering a program that will assure the camper a most enjoyable and healthful vacation limited to 75 girls, ages 7-16.

Private lake, land and water sports, crafts, riding, nature study, dramatics. Trained staff, resident nurse and local physician. Wholesome food, pure artesian well water, modern sanitation. Season July 1-August 25. Rates \$21.00 a week, 8 weeks, \$150. For booklet, address Paradise Falls Girls' Camp, Paradise Falls, Pa., Cresco, P.O.

## Something To Think About

In these days when every dollar counts, a summer at camp may be an economy rather than an expense. Have you ever put down in "COLD FIGURES" just what a summer at home costs and compared this with the cost of a summer at camp?

### A SUMMER AT HOME MEANS

Board for 8-9 weeks - - - \$.....

Clothes, laundry, dry cleaning \$.....

Some type of healthy exercise planned, supervised and paid for. This may mean golf, tennis, and riding lessons and perhaps a junior membership in a country club. It counts up at the end of the month - \$.....

ENTERTAINMENT—not alone paid for but carefully planned and supervised and often worried over! Movies, plays, performances, all requiring tickets \$.....

If there is a car, what about gasoline, wear and tear on the car? And more worries \$.....

There will be week-end trips, parties, dances, luncheons, picnics—your child must entertain too - - - \$.....

TOTAL - - - \$.....

### A SUMMER AT CAMP MEANS

The camp fee - - - \$.....

This includes board, interesting activities, expert instruction, medical care, both preventive and otherwise, healthy exercise, desirable companions. At some camps it includes riding.

TRANSPORTATION - - - \$.....

Summer tourist rates are very low this year. And driving reduces the cost materially.

INCIDENTALS

Limited in most camps to \$25 or less - - - \$.....

CLOTHING

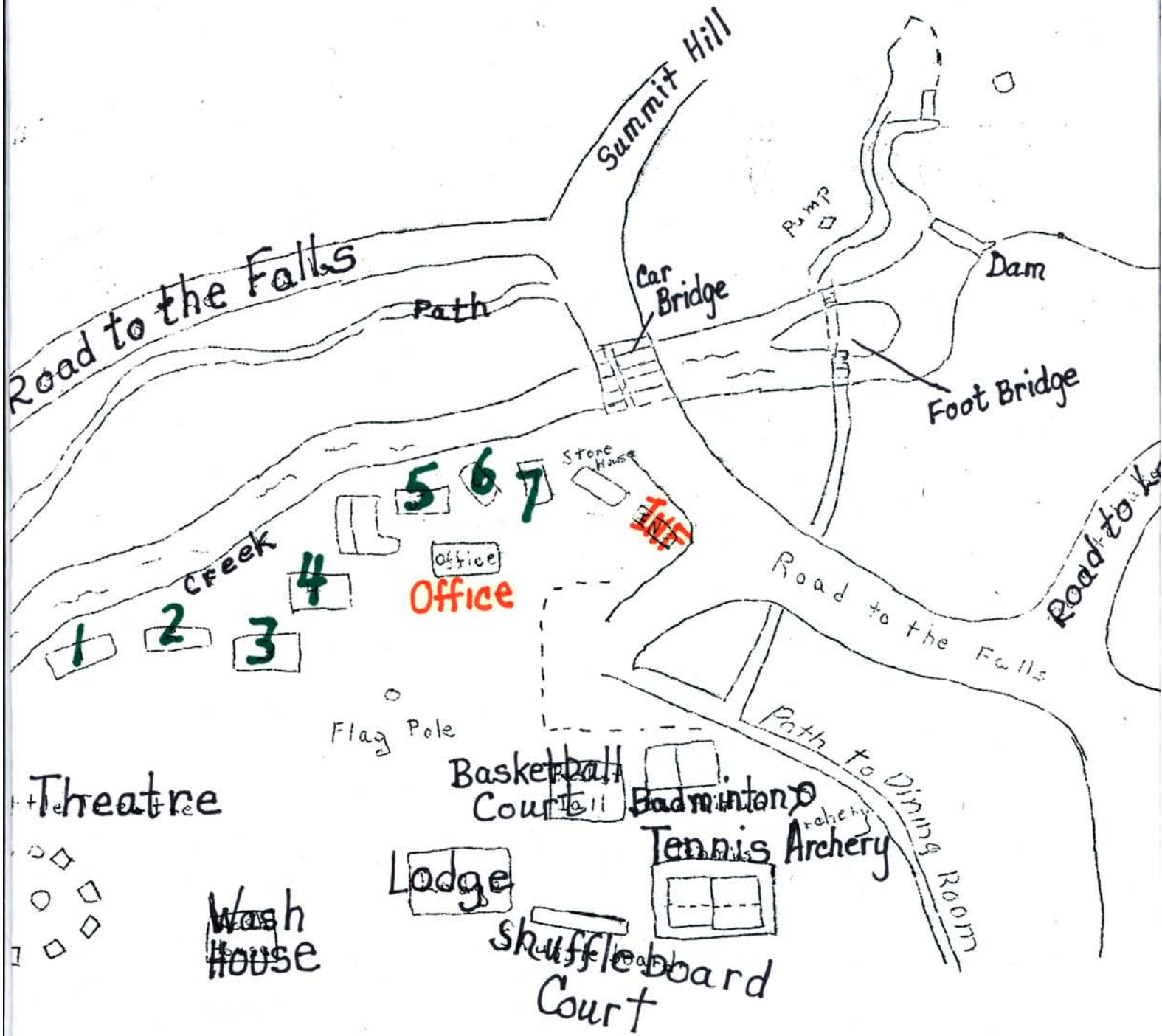
\$30 is an average allowance for uniform requirements at present. - \$.....

TOTAL - - - \$.....

Let's do a little



# CAMPER-DRAWN CAMP COMPLEX MAP



An amazing number number of buildings and courts!



1926 CAMPSITE PHOTO



? DATE - LIKELY EARLY UNDEVELOPED SITE  
- LIKELY FIRST GROUP OF CAMPERS





## CAMP LODGE (with fireplace)

A Very early photo shows only the 7 cabins and Rec Hall where activities were held in inclement weather. Missing and built later were the cabins - office, infirmary and an open air craft cabin. The on-site athletic courts were placed close together in the center.





## THE LODGE INTERIOR

Most large group activities were held in the camp circle outside. A few had to be held in this lodge in bad weather. This fireplace provided the only heat a camper was likely to enjoy all summer!

*Rotating small groups used it for Bible Studies, drama, etc.*





# CABINS

Campers stayed in 7 cabins (10 girls and one counselor) to each rustic structure. There were flaps and screens at the windows, welcoming or preventing breezes off the nearby stream.

There <sup>were</sup> toilets, sinks, showers in separate buildings at the far end of the complex.



1947



## CABINS

These camp cabins had bunks and very little space for storage of belongings. It would have been a challenge to keep 70 girls happy during a rainy day, let alone a cold and drippy week!









## CRAFT CABIN

Girl campers at camp for weeks could make very elaborate crafts at this open air but roofed cabin. The Blair sisters ran it several summers, long enough for red-headed Bonnie, to meet P.F.'s Social Director, David Jentsch!

They later married and spent more than 60 yrs together.



## WASH HOUSE

Campers brought sheets, pillowcases, pillows, and blankets for their bunks and were responsible for launder linens and clothing each week. Sheets were laid out flat on the grass to dry →





Girl campers could choose to stay 2-8 weeks at camp. That meant that long-timers were responsible for all their laundry. The camp vicariously taught domestic skills as uniforms needed sewing, etc.

Families could visit between 1:00-5:00 on Sundays, so Saturday was the day to tidy cabins and the whole complex

Campers bought and sent post cards, purchased canteen pop & snacks at the P.F. store and post office, but all camper activities remained completely separate from guests and cottagers.







## INFIRMARY

Long camper stays kept the nurse busy with minor to major health concerns. Our 3D Archive collection includes a cardfile box cataloging infirmary visits by campers. Each camper was weighed and interviewed regularly about her health. Contagious illness meant a stay in the few infirmary beds.





Early uniforms, early photo format





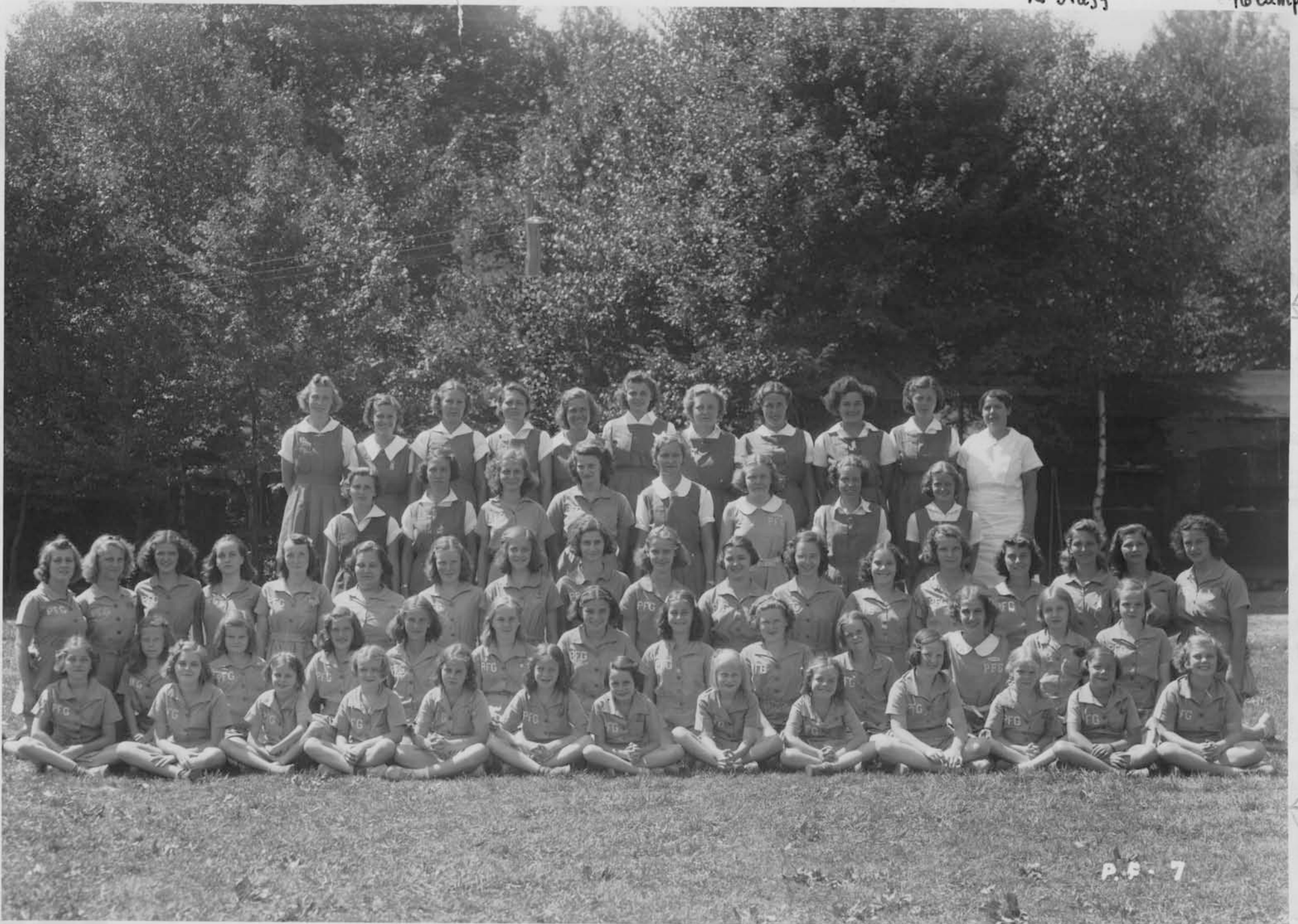






160 staff

460 camper



INDIVIDUAL CABIN PHOTOS



1937



CAMPERS AT LAKESIDE





# STAFF

The number of staff varied with registration totals. The staff (10 to 20 counsellors) were photographed yearly. (Find more in this pocket)

Unidentified 1937 Staff (16)

Undated, but identified staff wearing different uniforms







Camp Paradise Falls

Zamsky Studios, Phila.,





IDENTIFIED TOP & BOTTOM

*Cunningham Abner Christman Wain Murphy Palmer Schuler VanDrew*



*Antonia Rose Miller Smith Parsons Ray Johnson Carson Billen*

ZIMERY STUDIOS

Counsellors were paid \$75 for whole summer's responsibility.

P. F. G. Camp staff - 1947

Salaries (1947) → (1946)

Barnhardt, Doris M.  
Hollar Avenue  
Shippensburg, Pa

Arts and Crafts

\$ 75

Blauch, B. Roberta  
7300 Miller Avenue  
Upper Darby, Pa

Swimming

\$ 75

Coleman, Peggy J  
211 Hartranft Ave.,  
Coleston?Norristown Pa

Athletics

\$ 40

Cunningham, Elizabeth  
929 Cleveland, Ave.,  
Schenectady, Ny.

Riding

\$ 150

\$ 150

Cutting, Carolyn  
107 Susquehanna Road  
Abington, Pa

Arts and Crafts  
(Head)

\$ 150

\$ 125

\* Haldeman, Evelyn  
Belmont Avenue  
Southampton, Pa

Director

\$ 300

\$ 300

Hewitt, Margaret Anne  
613 Prospect Avenue  
Prospect Park, Pa.

Athletics (Head)

\$ 75

Jacobs-en, Amy  
1614 North 15 Street  
Philadelphia Pa

Arts and Crafts

\$ 125

Klein, Margarete  
P.O. Malvern  
Green Tree, Pa

Swimming

\$ 75

\$ 50

Lengel, Kathryn M  
Neffs, Pa.

Camp Nurse

\$ 150

Miller, Lois  
360 Walnut Street  
Jenkintown, Pa

Secretary

\$ 150

\$ 125  
(Music)

Price, Marian E  
130 Pike Street  
Port Carbon, Pa

Swimming (Head)

\$ 125

\$ 100

Schulze, Marion  
241-09 Weller Ave.,  
Rosedale, L.I. N.Y.

Swimming

\$ 100

\$ 75

Schweiker, Anne H  
Worcester, Pa.

Dramatics

\$ 60

Schweiker, Shirley  
Worcester, Pa.

General-Newspaper

\$ 85



Conferences were  
held for whole  
summers responsibility

1947 Staff Members - P.F.G. Camp  
( continued )

Salaries  
(1947) (1946)  
\$ 150 \$ 125

Studley, Dorothy E  
415 Kenmore Ave.,  
Glenside, Pa.

Music

In addition to money payment the staff members received housing,  
food, transportation to and from their homes, and 25 cents per week  
allowance for laundry.

March 9, 1948

Harry P. C. Gressman  
Secretary and Manager-ad-interim  
Paradise Falls Lutheran Association





COUNSELLORS 1949

1949

NAME AND ADDRESS

BUNK

NICKNAME

DEPARTMENT

Albers, Helen  
712 E. 27th St.  
Brooklyn 10, N.Y.

1

Miss Cookie

Swimming

Betty married  
Dave Jentsch

Blair, Betty  
212 S. 5th St.  
North Wales, Pa.

5

Miss Betty

Head of Arts & Crafts

Blair, Nancy  
212 S. 5th St.  
North Wales, Pa.

3

Miss Nancy

Arts & Crafts

Bothwell, Joanne  
122 N. 13th St.  
Allentown, Pa

1

Miss Jo

Swimming

Burnison, Suzanne  
2021 Nott St.  
Schenectedy, N.Y.

5

Miss Sue

Arts & Crafts

\*

Hauber, Mrs. Anna  
1733 Porter St.  
Phila., Pa.

Office Miss Ann

Directress

Hess, Carolyn  
1800 Mifflin  
Huntingdon, Pa.

7

Miss Corky

Head of Swimming

Kohn, Margarot  
54 Braeburn Rd.  
Havertown, Pa.

2

Miss Marge

Athletics

Miller, Phyllis  
54 Gay St.  
Phoenixville, Pa.

6

Miss Phil

Music

Our own  
Hildegard  
Miklau!

Pohl, Hildegard  
1703 Brill St.  
Phila., Pa.

2

Miss Hilde

Swimming

Pouse, Mrs. M.  
1624 Green St.  
Phila., Pa.

Infirmary Miss Marge Nurse

Riddell, Patricia  
918 Ormand Ave.  
Drexel Hill, Pa.

7

Miss Pat

Dramatics

*done*



COUNSELLORS

Reley, Bette 2  
2822 Mt. Carmel Ave.  
North Hills, Pa.

Miss Froggy Athletics

Stapf, Anne 4  
5604 Henry Ave.  
Phila., Pa.

Miss Anne Head of Athletics

Tait, Marilyn 6  
636 Mason Ave.  
Drexel Hill, Pa.

Miss Curly Athletics

Handwritten notes: "Bette", "Anne", "Marilyn" and other illegible scribbles.

[Empty oval]

[Empty oval]

\*

[Empty oval]

Handwritten notes: "Marilyn", "Anne", "Bette" and other illegible scribbles.

## DAILY ACTIVITIES

7.00	Reveille (morning dip optional).	1.00	Mail.
7.25	Flag Raising and Morning Devotions.	1.30-2.30	Quiet Hour. (Sundays 2.00 to 3.00 o'clock).
7.45-8.30	Breakfast.	3.00-3.30	Swimming.
8.45-9.45	Bunk Duties — Special Duties.	4.00-4.45	Hobby Hour.
10.00-12.00	Activities (Baseball, Nature Study, Arts & Crafts, Swimming, Dancing, Dramatics, Volley Ball, Tennis, etc.)	5.15	Supper.
12.15	Dinner.	6.30	Flag Lowering.
12.45	Canteen.	7.15	Organized Games.
		8.00	Evening Programs.
		8.45	Vespers.
		9.00	Taps.



# AWARDS

PIN



EMBLEM

PIN AWARD

Jan 190 -  
Int. 200  
Ex. 210

Points

- 40 1. Pass Test for advanced swimmer.  
A. Participation in competition
- 25 2. Row A boat successfully, including port and starboard turns.  
A. In/out - ~~change~~  
B. Change positions
- 15 3. Canoeing - be able to execute straightway "I" and "C" strokes.
- 20 4. Plan a game night and see it successfully through.
- 10 5. Attend six one-half hour period of First Aid.
- 20 6. Participate in dramatics - plan and produce a dramatic program.
- 7. Collect and mount at least ten leaves and flowers and identify them.  
Identify leaves or trees  
" wild flowers
- 30 8. Take part in two major sports and horseback riding, or in three major sports and be able to apply the rules of two games.  
How to catch & preserve butterflies, leaves, etc. Recognize local animal life.
- 15 9. Plan a permanent camp improvement.
- 15 10. Make an original arts and crafts project showing creative ability artistic talent and one which has been accomplished with a minimum of help.
- 10 11. Attend all scheduled classes.
- 10 12. Plan and lead vespers.
- 10 13. Pass first Rank in Archery.
- 10 14. Build a campfire. - Precautions necessary  
Planning an over-nite sleep.
- 10 15. Go on a Cook-out, dinner or breakfast.
- 50 16. Write an essay on "What Constitutes Good Sportsmanship in Camp Life."  
Accomplishment of  
} Co-operation  
} Promptness  
} Neatness  
} Deportment  
} Good Sportsmanship
- 10 17. Take part in a major evening program.
- 10 Bible - Memory Work - Participation in class discussions. - Divisions of the Bible - Use of Bible.
- 18. Read two books and write a report.
- 19. Showing interest and helping with younger children in camp activities.

290



Juniors - 150  
Int. 175  
Senior. 200

EMBLEM AWARD

- 40 1. Pass Swimming test, Participate in swimming class.  
\_\_\_\_\_
- 25 2. Take part in games showing progress in such. Be able to apply the rules of one major sport.  
\_\_\_\_\_
- 15 3. Pass boating test.  
\_\_\_\_\_
- 20 4. Take part in a major evening program.  
\_\_\_\_\_
- 10 5. ~~Read one approved book and write a report on it.~~  
*Bible - Memory work - Using Bible daily - Participation in planned work.*  
\_\_\_\_\_
- 20 6. Lead and plan a vesper program.  
\_\_\_\_\_
- 10 7. Make any arts and crafts project with an original design. Must be done neatly and independently - one worthy of merit.  
\_\_\_\_\_
- 50 8. ~~Write your idea of a good camper.~~  
*Qualities found in a good Camper* } *Co-operation*  
*Neatness*  
*Sportsmanship*  
*Department*  
*Promptness*  
\_\_\_\_\_
- 20 9. ~~Attend music classes.~~  
*+ Dramatic*  
*A. Participation in Camp entertainments*  
\_\_\_\_\_
- 10 10. ~~Attend dramatic classes.~~  
*Nature*  
*Recognize 3 leaves & trees.*  
*Build a fire - Precautions*  
*Animals found in local surroundings.*  
\_\_\_\_\_
- 10 11. Take part in a cook-out.  
\_\_\_\_\_
- 20 12. ~~Take a two mile hike.~~  
*Show improvement in Swimming & Athletics*  
\_\_\_\_\_

150

# HIKING

Every walk to their  
3 meals a day at  
Nestledown totalled  
1½ miles.

Crossing highway was  
always a challenge!



P.F. 3

Long hikes were planned to the highest P.F. destinations



*Close proximity courts kept campers involved*



**Camp Paradise Falls 1941**

Zamsky Studios, Phila., Penna.

# ARCHERY

After the camp closed, the only sport that remained in the area was a hay backstop for cottagers use. Early 1950's social directors had bi-weekly archery instruction.







## CAMPFIRES

Campfires were a regular affair with senior campers getting badges for getting a fire started and leading a vesper service!





# BASKET BALL



# HAY RIDES





## HORSEBACK - RIDING

The upper bridge above the Falls was part of the horseback riding trail. Jodhpurs and boots were optional clothes for campers.

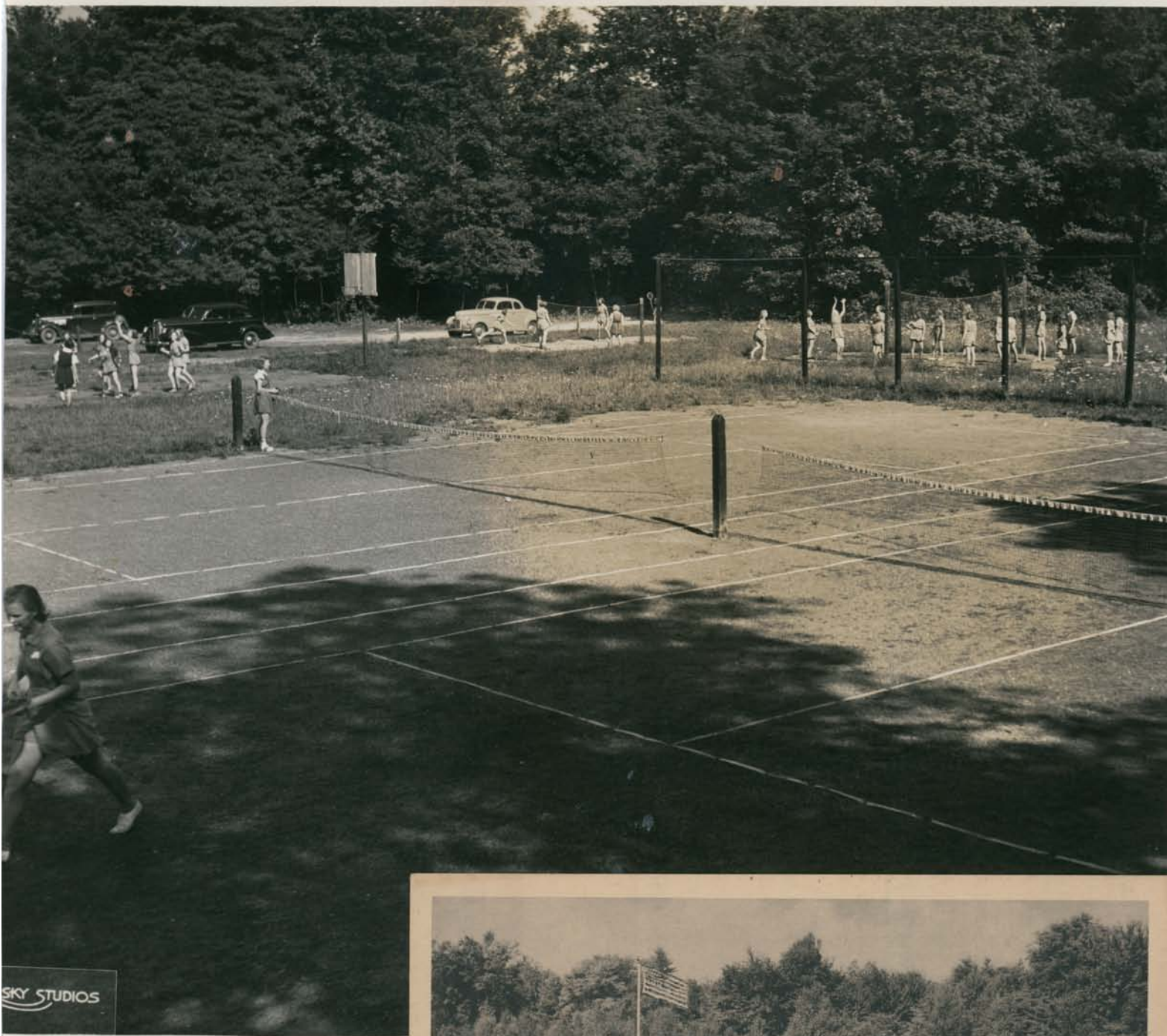


Along a Bridle Path  
Paradise Falls, Pennsylvania





TENNIS - Right on-site



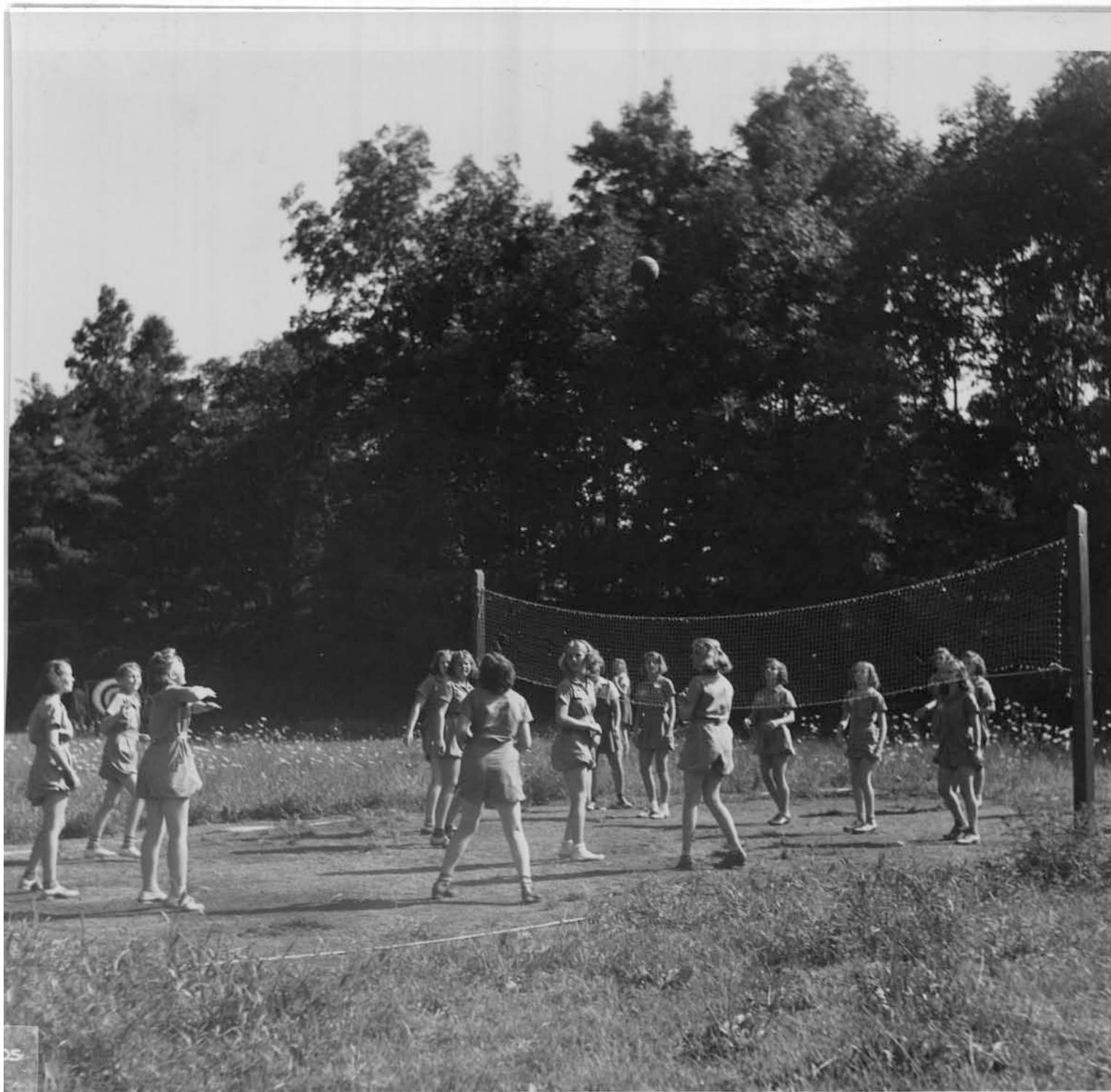
SKY STUDIOS

Post card proves its  
campground location



Paradise Falls Girls' Camp Paradise Falls, Pa. Cresco P.O.

# VOLLEY BALL





# SOFTBALL





As the Sun Goes Down

I think of my darling as the sun goes down,  
The sun goes down, the sun goes down.  
I think of my darling as the sun goes down,  
Down, down below the mountain.  
chorus-

I'll ride, I'll ride, I'll ride, I'll ride,  
I'll ride all night,  
When the moon is bright, when the moon is bright.  
I'll ride, I'll ride, I'll ride, I'll ride,  
I'll ride all night,  
I'll get there in the morning.

I'll see my dear darling as the sun comes up,  
The sun comes up, the sun comes up,  
I'll see my dear darling as the sun comes up,  
Up, up above the mountain.

Morning Comes Early

Morning comes early and bright with dew,  
Under your window I sing to you.  
Up, then, my comrade, up, then, my comrade,  
Let us be greeting the morn so blue.

Why do you linger so long in bed?  
Open you window and show your head.  
Up, then, with singing, up, then, with singing,  
Over the meadows the sun comes red.

Marching to Pretoria

I'm with you, and you're with me,  
And so we are all together,  
So we are all together,  
So we are all together.  
Sing with me, I'll sing with you,  
And so we will sing together,  
As we march along.

We are marching to Pretoria, Pretoria, Pretoria,  
We are marching to Pretoria, Pretoria, hurrah!

We have food, the food is good,  
And so we will eat together,  
So we will eat together,  
So we will eat together.  
When we eat, 'twill be a treat,  
And so let us sing together,  
As we march along.

Hungarian Round

Sweet the evening air of May, soft my cheek caressing;  
Sweet the unseen lilac spray with its scented blessing.  
White and ghostly in the gloom,  
Shine the apple trees in bloom,  
(Apple trees in bloom.)

Lord, Make Me More Holy

Lord, make me more holy, Lord make me more holy,  
Lord, make me more holy, until we meet again.  
Holy, holy, holy, until we meet again.  
2. faithful      3. humble      4. righteous

Let Us Break Bread Together

Let us break bread together, on our knees,  
yes, on our knees;  
Let us break bread together on our knees, on our knees  
When I fall on my knees, with my face to the  
rising sun,  
O Lord, have mercy on me. (on me.)

The Keeper

The keeper would a hunting go,  
And under his coat he carried a bow,  
All for to shoot at a merrie little doe,  
Among the leaves so green, O.  
(chorus)  
Jackie Boy, (master,)  
Sing ye well? (Very well.)  
Hey down! (Ho down!) Derry, derry down,  
Among the leaves so green, O.  
To my hey down, down! (To my ho down, down!)  
Hey down! (Ho down!) Derry, derry down,  
Among the leaves so green, O.

The first doe she did cross the plain,  
The keeper fetched her back again;  
Where she is now she may remain,  
Among the leaves so green, O.

The second doe she cross'd the brook;  
The keeper fetched her back with his hook,  
Where she is now you may go and look,  
Among the leaves so green, O.

Out in the Forest

Out in the forest music is ringing,  
A band of gipsies laughing and singing.

Boom-di-ar-i-ar-i, Boom-di-ar-i-ar-i,  
Boom-di-ar-i-ar-i, Boom, zip, zip.  
Boom-di-ar-i-ar-i, Boom-di-ar-i-ar-i,  
Boom-di-ar-i-ar-i, Boom, zip.

What ho! My gipsies, where are you going?  
We're spreading gladness thruout the wide world.

Over the Ground

Over the ground is a mat a green,  
Over the green is the dew;  
Over the dew are the arching trees,  
Over the trees the blue.  
Dotting the sky are the scudding clouds,  
Over the clouds is the sun;  
Over the sun is the love of God brooding  
us everyone one.



### As the Sun Goes Down

I think of my darling as the sun goes down,  
The sun goes down, the sun goes down.  
I think of my darling as the sun goes down,  
Down, down below the mountain.  
chorus-  
I'll ride, I'll ride, I'll ride, I'll ride,  
I'll ride all night,  
When the moon is bright, when the moon is bright.  
I'll ride, I'll ride, I'll ride, I'll ride,  
I'll ride all night,  
I'll get there in the morning.

I'll see my dear darling as the sun comes up,  
The sun comes up, the sun comes up,  
I'll see my dear darling as the sun comes up,  
Up, up above the mountain.

### Morning Comes Early

Morning comes early and bright with dew,  
Under your window I sing to you.  
Up, then, my comrade, up, then, my comrade,  
Let us be greeting the morn so blue.

Why do you linger so long in bed?  
Open your window and show your head.  
Up, then, with singing, up, then, with singing,  
Over the meadows the sun comes red.

### Marching to Pretoria

I'm with you, and you're with me,  
And so we are all together,  
So we are all together,  
So we are all together.  
Sing with me, I'll sing with you,  
And so we will sing together,  
As we march along.

We are marching to Pretoria, Pretoria, Pretoria,  
We are marching to Pretoria, Pretoria, hurrah!

We have food, the food is good,  
And so we will eat together,  
So we will eat together,  
So we will eat together.  
When we eat, 'twill be a treat,  
And so let us sing together,  
As we march along.

### Hungarian Round

Sweet the evening air of May, soft my cheek caressing;  
Sweet the unseen lilac spray with its scented blessing.  
White and ghostly in the gloom,  
Shine the apple trees in bloom,  
(Apple trees in bloom.)

### Lord, Make Me More Holy

Lord, make me more holy, Lord make me more holy,  
Lord, make me more holy, until we meet again.  
Holy, holy, holy, until we meet again.  
2. faithful      3. humble      4. righteous

### Let Us Break Bread Together

Let us break bread together, on our knees,  
yes, on our knees;  
Let us break bread together on our knees, on our knees  
When I fall on my knees, with my face to the  
rising sun,  
O Lord, have mercy on me. (on me.)

### The Keeper

The keeper would a hunting go,  
And under his coat he carried a bow,  
All for to shoot at a merrie little doe,  
Among the leaves so green, O.  
(chorus)  
Jackie Boy, (master,)  
Sing ye well? (Very well.)  
Hey down! (Ho down!) Derry, derry down,  
Among the leaves so green, O.  
To my hey down, down! (To my ho down, down!)  
Hey down! (Ho down!) Derry, derry down,  
Among the leaves so green, O.

The first doe she did cross the plain,  
The keeper fetched her back again;  
Where she is now she may remain,  
Among the leaves so green, O.

The second doe she cross'd the brook;  
The keeper fetched her back with his hook,  
Where she is now you may go and look,  
Among the leaves so green, O.

### Out in the Forest

Out in the forest music is ringing,  
A band of gipsies laughing and singing.

Boom-di-ar-i-ar-i, Boom-di-ar-i-ar-i,  
Boom-di-ar-i-ar-i, Boom, zip, zip.  
Boom-di-ar-i-ar-i, Boom-di-ar-i-ar-i,  
Boom-di-ar-i-ar-i, Boom, zip.

What ho! My gipsies, where are you going?  
We're spreading gladness thruout the wide world.

### Over the Ground

Over the ground is a mat a green,  
Over the green is the dew;  
Over the dew are the arching trees,  
Over the trees the blue.  
Dotting the sky are the scudding clouds,  
Over the clouds is the sun;  
Over the sun is the love of God brooding  
us everyone one.



### Witchcraft

If there were witchcraft  
I'd make two wishes,  
A winding road that beckons  
me to roam.  
And then I'd wish for a blazing  
campfire  
To welcome me when I'm returning  
home.  
But in this real world there is  
no witchcraft,  
And golden wishes do not grow  
on trees.  
Our fondest daydreams must be the  
magic  
To bring us back these happy  
memories.  
Memories that linger,  
Constant and true;  
Memories we cherish, --- of you.

### Spirit of the Living God

Spirit of the living God,  
Fall afresh on me. (repeat)  
Melt me, mold me, fill me, use me.  
Spirit of the living God,  
Fall afresh on me.

### God Who Touchest Earth

God who touchest earth with beauty,  
Make me lovely too,  
With Thy Spirit recreate me,  
Make my heart anew.

Like the springs and running waters  
Make me crystal pure.  
Like the rocks of towering grandeur  
Make me strong and sure.

Like Thy dancing waves in sunlight  
Make me glad and free;  
Like the straightness of the pine tree  
Let me upright be.

Like the arching of the heavens  
Lift my thoughts above;  
Turn my dreams to noble action-  
ministries of love.

God who touchest earth with beauty  
Make me lovely too.  
Keep me ever by Thy Spirit  
Pure and strong and true.

### Rise up, O Flame

Rise up, O flame, By thy light  
glowing,  
Show to us beauty, vision, and joy.

### At Worship

Evening skies! Sunrise!  
Lakes and rushing water;  
Make all things unlovely  
From my soul depart;  
Purple mountains rising high!  
Trees against the sky;  
Life is beautiful because  
God speaks within my heart.

Starry skies! Moonrise!  
Eternal heavens,  
Take away my smallness,  
Make me long to grow;  
Vastness of the universe!  
Timelessness of space;  
Life is wonderful because  
God speaks within my soul!

### God of the Mountain

God of the mountain,  
God of the hill,  
Show us Thy spirit,  
Teach us Thy will.

God of the starlight,  
God of the dawn,  
Show us a vision,  
Lure us on.

Giver of blessings,  
To Thee we pray,  
May we be thankful  
ever always.

God of the starlight,  
God of the dawn,  
Show us a vision,  
Lure us on.  
Lure us on.  
Lure us on.  
Lure us on.

### Old Man Grey Chief

Old man grey chief,  
Maker of the mountain,  
Hear, O hear our cry.  
Hear our cry for goodness,  
Hear our cry for cleanness,  
Hiyah, (15 times)

### Make New Friends

Make new friends,  
And keep the old,  
The first are silver,  
The other, gold.

### Game A-Riding

Came ariding by one day,  
Zum-ta-dy-ja-dy-ja;  
A suitor jaunty, bold & gay,  
Zum-ta-dy-ja-dy-ja! (Hej!)

Oft he asked in manner bold,  
Zum-ta-dy-ja-dy-ja;  
How could I this wreath with-  
Zum-ta-dy-ja-dy-ja! hold?

This little heart I'd give to  
Zum-ta-dy-ja-dy-ja, you,  
Could I be sure your own were  
true.  
Zum-ta-dy-ja-dy-ja. (Hej!)

### I'm Goin to Leave Ol' Texas

I'm goin' to leave 'ol Texas not  
They've got no use for the  
longhorn cow;  
They've plowed and fenced  
my cattle range,  
And the people there  
are all so strange.  
I'll take my horse, I'll take  
my rope,  
And hit the trail upon a lope.

I'll bid adios to the Alamo,  
And turn my head toward Mexico

I'll make my home on the wide,  
wide range,  
For the people there are not  
so strange.

### Awake, Awake Ye Dreamers

Awake, awake, ye dreamers,  
The cuckoo loudly calls,  
The sun shines on the meadows,  
And on the mountain walls.  
Awaken, awaken, the cuckoo  
loudly calls,  
Awake, awaken, the cuckoo  
loudly calls.  
Cuckoo, cuckoo, cuckoo,  
Cuckoo, cuckoo, cuckoo,  
Cuckoo, cuckoo.

### Let Us Sing Together

Let us sing together, let us sing to-  
One and all a joyous song.  
Let us sing together, one and all a  
joyous song.  
Let us sing again and again,  
Let us sing again and again,  
Let us sing again and again,  
One and all a joyous song.



# SINGING

## Camp Songs

### Bunk 1 Tune-Jingle Bells

P.F.G. Girls are we  
Happy all the time  
Always ready, always willing  
To have a wonderful time  
Here we are, seven in all  
Ready at any call  
Happy go lucky as can be  
And always on the ball.

With its friendship true it  
calls  
By its guiding lamp  
Lift our spirits, speed them  
onward  
To honor green and white  
Memories made we'll ne're  
forget  
At our P.F.G.

Bunk 2  
No matter how young a camper is,  
She's always full of pep.  
Our jolly six play games and swim  
And always keep in step.  
Our colors are green and white  
And we compete most every night.  
Bunk 2, as you can see, is Hifty  
And we will always remember 1950.

### Bunk 3

Paradise Falls is our camp-site  
For green and white we'll ever fight  
We'll play our games and have our campouts  
With all our honor we have got, there is no doubt  
That we will always hold its glory  
In our life long growing story  
We will all some day become a champ  
and then we'll thank dear old P.F.G. Camp.

### Bunk 4 Tune-Notre Dame

We have the camp and we have the fun,  
We have the counsellors all on the run,  
~~We have the~~  
While we're here lets give a cheer for the  
dear old P.F.G.

### Bunk 5 Camping Time

It's dear old camping time  
It's dear old camping time  
Mrs. Anne and counsellors too  
Are here to greet you  
Let's give a rousing cheer  
For camping time is here  
Let's give another cheer  
RaH, Rah, Rah, Rah

Our P.F.G.  
High above our Paradise Falls  
Sees our girls camp.

# SINGING

## Cabin 6

Softly down cabin row  
Soft footsteps for their sign  
Come the inspectors  
At the stroke of nine.

With their sharp eyes peering  
On each shelf and neath each bed  
With ~~bunk~~ ~~6~~ ~~shape~~ cheering  
This is what they said:

Sweeper--where is the sweeper?  
See that dirt upon the floor?  
Neater--you must be neater,  
or you'll get 10 points no more.

## Cabin 7

Tune- Put Another Nickel In

1950 at P.F.G.  
Wonderful as it can be  
Lots of fun and gosh on gee  
We love it, love it, love it.

Here you make your dearest friend  
And it lasts until the end  
That's the way it's always keen  
We love it, love it, love it.

Crowded, our days are crowded  
with swimming, tennis, games and archery  
And everything that you can see.

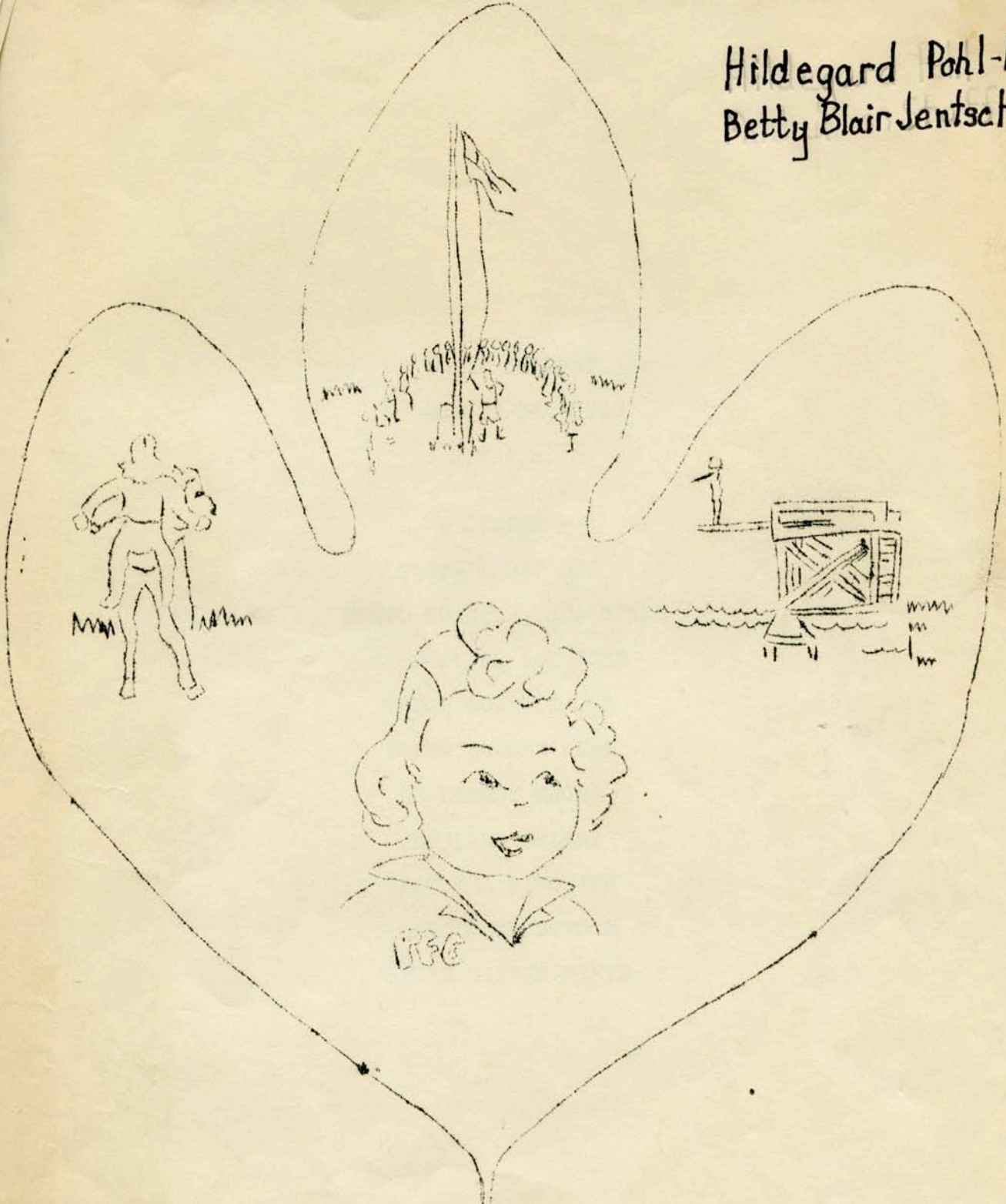
So 1950 at P.F.G.  
Wonderful as it can be  
Lots of fun and gosh on gee  
We love it, love it, love it.



WRITING AND JOURNALISM SKILLS

1949 Banquet  
End of Year

Hildegard Pohl-Mikla  
Betty Blair Jentsch



BANQUET ISSUE

CAMP BANQUET  
AUGUST 26, 1949  
SIX P.M.

- DINNER -

FRESH FRUIT CUT  
FRIED CHICKEN, SO. STYLE  
SNOW FLAKE POTATOES  
FRESH CORN ON COB  
FRESH GARDEN PEAS  
CRANBERRY SAUCE  
CHILLED CELERY  
HOT TEA BISCUITS  
CHOCOLATE SUNDAE  
AFTER DINNER MINTS



## OUR CAMP LIFE IN REVIEW

Let's see now, just how does one begin reviewing a whole summers work on just one little sheet of paper. Let's look back over our camp chatters and see what we can find.

Camp officially opened Saturday July 2 for the first encampment. The campers got off to a good start with movies that evening and a campfire the next evening. On the 4th of July we saw fireworks. The following Wednesday night, we had our first evening hike. The week was finished out with the amateur show and a man hunt which consisted of Miss Jo, Miss Sue and Miss Corkie hiding behind the float.

The next few weeks we had bunk night, fashion shows, camper, counsellor games, a hare and hound hunt, Christmas party, carnival, hayrides, minstrel show, and Birthday night followed by the breaking up of camp for the first month campers and the beginning of camp for the second monthers. The second month had such programs as progressive night, skit night amateur show, treasure hunt. Judgment day, peanut hunt, counsellor show, hayrides, camp play, water pageant, song competition, horse show, a dance for the intermediates and seniors, candle light service and the presentations of awards at the camp Banquet. This just about covers everything so I guess we've done it after all.

## REVIEWING OUR MINSTRAL

On July 28 we gave our annual Musical show at Social Hall. This year our show was a minstrel.

Leading roles were played by Miriam Ropp who acted as middle man, Winnie Ropp who did another of her fine tap dances, Grace Hauber sang "I'll See You Again," and Ruth Miller stopped the show with "Fuedon, Fussin, and a Fighten." The audience joined in on such songs as "Dixie", "Old Virginia" and "Old Black Joe".

Eller Michoner sang "Caroline" followed by a number sung by Gloria Terperollili. Mornie Laffert sang "Alexander's Ragtime Band" accompanied by the chorus.

Norrv Holbrook and Dee Dee Deininger made a perfect couple singing "Daisy."

Penny Poisal, a first month camper, did another of her splended dances.

The chorus sang Good Night Ladies and tired and happy we came home to camp.

## GREEN AND WHITE

This year we have had very keen green and white competition, for instance, bridge, badminton, baseball, archery, shuffelboard, baby in the air, relays, kick ball, jump over the legs, quoits, hop scotch, red rover, volleyball, tennis, hare and hound, man hunt, treasure hunt.

The competition was opened by Miss Corkie when we dug up the hatchet. It officially closed August 25 when the hatchet was buried. The final scores were Green 69 and White 101. Congratulations White!

## COUNSELLOR SHOW

Instead of regular play or show, our counsellors this year presented a variety show. That evening's entertainment included singing, a parody on radio programs, Miss Corkie's inimitable stories, the presentation with full sound effects of the "Lamp Went Out", and closed with all the counsellors presenting a medly of old favorite songs including "Smiling Through", and "For Me and My Gal". The program ended with the girl counsellors walking out with their "Boy" counsellors.



## SONGS

### Bunk I

Snappy little Juniors  
Peppy are we  
The most important branch  
Of the Camp Family.

### Bunk II

Green and white  
Green and white  
Competition every night  
As the campers go playing along.

Yippe Yi, hear em shout  
As they tumble all about  
And they all have a jolly good  
time.

Then comes bunk 2 with Miss  
Marge and Froggie too  
Scrub them floors, make them beds,  
stack your clothes and wash them heads  
Then taps rolls around and they  
all fall to the ground  
Into bed, each is dead  
That's the end.

### Tune of Cason Song

### Bunk III

Onward all ye campers  
Marching into line  
With a sign of paradise  
Going on before  
Miss Ann the roval master  
Directs us into fun  
Forward into line  
See her campers go.

### Tune of Christain Soldiers

### Bunk IV

P-A-R-A-D-I-S-E F-A-L-L-S  
Spells the name of the camp  
that bunk 4 loves the best  
All the girls think that  
Paradise is swell  
And we're all set to have a  
good time.

### Tune of John Brown's Body

### Bunk V

One nine four nine at P.F.G.  
No other year the same  
Every girl a comrad true  
What ere her name or school or  
fame.

One nine four nine at P.F.G.  
But its the inspiration most  
That makes us love it so.

### Bunk VI

Take me out to camp Paradise  
Take me out there today,  
Buy me some comics and bubble  
gun,  
That's all we need to have  
plenty of fun,  
So it's root, root, root for  
Bunk 6,  
The gang that knows all the  
tricks,  
So it's one, two, three days  
we're Docked  
From general swim!

### Bunk VII

We are the girls from cabin  
seven,  
We never sleep till after  
eleven,  
We make all the noise we can,  
Until we are scolded by Mrs.  
Ann;  
We really don't mean to be so  
bad  
But Paradise Falls makes us so  
glad,  
We have to keep on the jump  
and run  
For P.F.G. is so much fun.

### Tune of Glowworm



## OUR CANDLELIGHT

This year we held our annual candle light service one night early. It is the custom to hold it the night before the banquet but we held Wednesday evening, the 24th of August because of the calm night. We lined up with our green and white teams in the order of our bunks. Each counsellor stood with her bunk. The green counsellors had green candles and the white had white. Mrs. Anne lit her candle and from that each counsellor lit hers, then she in turn lit her cabins. We slowly walked to the lake dividing at the bridge with the white team going on the reservation side and the green team staying on our side. All the way to the lake we sang "Follow the Gleam."

When we got there, we sang "Baby's Boats" and floated our boats out into the lake. We then formed horseshoes and the green team sang "White Wings" with the white team singing it back.

Then the greens twice more sang to the whites with them echoing back. These songs were "Tell Me Why" and "Mister Moon." Then every body sang "Remember" and "Little Ship."

Miss Cookie entertained us with a solo and then Miss Jo and Miss Corkie began the surprise of the evening when a sudden puff of wind came up and ruined it. The surprise was a frame P.F.G. with candles in. It was to be set on the crest of the dam.

We sang "Follow the Gleam" all the way back to camp where the counsellors all lit the bonfire with their candles. We sang songs and had vespers and all returned to bed tired, solemn, and happy.

## CAMPER'S PLAY

This year's annual camper's play, we presented "Ready Made Family" a farce in three acts. Full of the wild antics of a Kelptomaniac epileptic, and a spoiled brat, this evening's entertainment held the audience attention for practically an hour and a half. The cast made up entirely of campers included:

Penny Smith as Begonia  
Christa Mayr as Nicodimia  
Bobby Ann Craig as Marillie  
Carol Barr as Bob  
Gail Irving as Cracker  
Bonnie McElroy as Aunt Ledia  
Grace Hauber as Agnes Marter  
Ann Wolfinger as Doris  
Janet Crofut as Sarmie

One thing that made the play particularly enjoyable was the presence of lovely scenery of a home interior, which had been done by Mr. Charles E. Hauber.

The plot of the play briefly concerned the trials and tribulations of a widow and widower who married without their children's knowledge and the fantastic means which the children used to break up the match.

## WATER PAGEANT

On August 14, we had our annual water pageant. It was taken from the tales of Old Mother Goose. We had little Bo Peep, The Queen of Hearts, Jack Be Nimble, Three Blind Mice, Ding Dong Bell, Humpty Dumpty, and a beautiful water ballet. Then the bathing beauty contest with a grand final push off.



## POISONALITIES

Miss Cookie	Ralph	Joanne Scott	Veronica Lake
Miss Jo	Curly Hair	Betty Ann Craig	Piano Playing
Linda Finkenstadt	Sweetness	Gail Lecher	Perfect form in diving
D. Deininger	Those Manners	Miss Phyl	Bubble Gum
Nanny Holbrook	Shyness	Miss Curly	Straight Hair
Judy Snyder	The fruit she gets every week	Mornie Lafferty	All-around Athlete
Marilyn Burns	Always Smiling	Ponny Smith	The Burr Haircut
June Saunders	That Hair	Jane Ross	Sweetness
Miss Marge	That White Bathing Suit	Janice Miller	Being a Dodgers' Fan
Miss Froggie	Failing History at Abington	Carol Ann Barr	Sharp Shooting Eye
Ruth Hiller	Being Jack Champion	Phyliss Bogart	Being Seen but not Heard
June Teufel	Figure	Christa Mayr	Nicodemus
Ann Crofut	Golden Locks	Miss Corky	Stories
Betty Ann Brama	Sweet Facial Expression	Miss Pat	All her shows
B.J. Merrill	Ballet Dancing	Ginny Crofut	Quietness at Night
Beth Moffses	Sunny Disposition	Clara Holbrook	Helpfulness
Miss Nancy	Which twin has the Toni?	Grace Hauber	Swimming Advancement
<u>Miss Hilde</u>	<u>Her Nightmare</u>	Ellen Michener	Letters from John
Bobby Clark	Horse Play	Mary Stickley	That Laugh
Peggy Hauber	Being First in Lunch Line	Bonnie McElroy	Cosmetic Collection
Carol Nesbit	Brooklyn Accent	Beverly Mitchell	Her Batting Average
Winnie Repp	Sweetness	Ann Wolfinger	Long Term of Service
Judy Reyner	The packages from Atlantic City	Helen Murray	Never Getting Here
Gloria Terpollili	That Voice	Mrs. Anne	Wonderful Job of Directing
Miss Anne	Sun Glasses		
Mollie Ritter	Leaving so Early		
Sally Cadmus	Kindness to Animals		
Eleanor Harrison	The A's best fan		
Gail Irvin	Being a Leading Lady		
Dickie Lura	Newspaper Articles		
Helen Rasche	Spilling Things		
Carole Craig	Her trip to Europe		
Susanne Mayr	Her Devotion to Christa		
Marcy Klingel	Quietness		
Miss Sue	Freckles		
<u>Miss Betty</u>	<u>Red Hair</u>		
Arlene Momjian	Being Miss P.F.G. 1949		
Sandra Skow	That Wide Awake Look		
Miriam Repp	Her Novel		
Vaughen Davis	The Mouse that makes Mudpies		



# AWARDS

## MUSIC AWARDS

The music award this year is divided between the Juniors, Intermediates and Seniors. The winners are Ruth Hiller, Penny Poisal, and Grace Hauber respectively.

## ARTS & CRAFTS

The Arts & Crafts awards are given to Bette Ann Brama for the Juniors, Miriam Repp, Intermediate and Grace Hauber, Senior.

## DRAMATICS

For their fine work in the various presentations of the camp we have the dramatics awards to Junior Ruthie Hiller, Intermediate Winnie Repp and Senior Mary Stickly.

## ATHLETICS

The athletics awards this year are classified into the different sports beginning with ----

### Softball

Mernie Lafferty won for fine playing. Senior. Intermediate Betty Ann Craig also did the same.

### Tennis

Gail Lecher won for the Intermediate and Mernie Lafferty won for the Seniors.

### Badminton

Mernie Lafferty won again to uphold the Seniors title. Gail Lecher won for the Intermediates.

### Volleyball

In volleyball Carol Craig won and Clara Holbrook for the Seniors

### Archery

The best of the Junior Archers is Ann Crofut. The highest scorer of the intermediates is Edwina Repp and Senior is Mernie Lafferty.

## MERIT BADGES

Merit Badges are being awarded to Ruthie Hiller for her winning the Jack tournament, also to Linda Finkenstadt and Nanny Holbrook for good sportsmanship and fair play.

## NEWSPAPER

The newspaper awards are given to those two who have written the most and been most co-operative on the Chatter staff. The winners are Dicky Lura and Ellen Michener

## RIDING AWARDS

The winners in the riding show were Marcia Klinge, Ruth Hiller, Clara Holbrook, Vaughan Davis, and Jane Ross.

## SWIMMING AWARDS

The girls who splashed their way to awards were Francis Ann McCauley from the Junior Division and Dickey Lura and Judy Reyner for the Intermediates and Grace Hauber for the Seniors.



## ARCHERY AWARDS

This year many of the campers go home with archery awards. The following people have received their Junior Yeoman pins. In order to get a Junior Yeoman pin the scorer must receive a total of 60 points at 15 yards with 30 arrows.

Juniors with Jr. Yeoman- N. Holbrook, L. Finkenstadt, B.A. Moffses, R. Hiller, B.A. Brama, A. Crofut, B.J. Merrill.

Intermediates with Jr. Yeoman- H. Rashe, E. Harrison, S. Skow, G. Terperollili, M. Repp, D. Lura, P. Hauber, V. Davis, E. Repp.

Seniors with Jr. Yeoman- B. McElroy, B. Dixon, C. Barr, J. Miller, C. Holbrook, M. Stickley, E. Michener, P. Smith, M. Lafferty, C. Mayr, J. Ross, P. Bogart.

Junior Yeoman Arrow-80 points, 15 yards, 30 arrows.

Juniors- A. Crofut, B.A. Brama, R. Hiller, B.A. Moffses, L. Finkenstadt, N. Holbrook.

Intermediates- E. Repp, V. Davis, P. Hauber, M. Repp, E. Harrison, H. Rashe.

Seniors- B. McElroy, B. Dixon, C. Barr, J. Miller, C. Holbrook, M. Stickley, E. Michener, P. Smith, M. Lafferty, C. Mayr, J. Ross, P. Bogart.

Yeoman-100 points, 15 yards, 30 arrows.

Juniors- A. Crofut, B. A. Brama, R. Hiller, B.A. Moffses, L. Finkens-tadt, N. Holbrook.

Intermediates- E. Repp, V. Davis, M. Repp, S. Skow, E. Harrison, H. Rashe.

Seniors- B. McElroy, B. Dixon, C. Barr, J. Miller, C. Holbrook, M. Stickley, E. Michener, P. Smith, M. Lafferty, C. Mayr, J. Ross, P. Bogart.

Junior Bowman-60 points, 20 yards, 30 arrows.

Juniors- A. Crofut, R. Hiller

Intermediates- E. Repp, M. Repp, S. Skow, Eleanor Harrison, H. Rasche.

Seniors- B. McElroy, B. Dixon, C. Barr, J. Miller, C. Holbrook, M. Lafferty, C. Mayr, J. Ross, P. Bogart.

Junior Bowman Arrow- 80 points, 20 yards, 30 arrows.

Juniors- A. Crofut, R. Hiller

Intermediates- E. Repp, M. Repp, D. Lura, S. Skow, E. Harrison

Seniors- B. McElroy, B. Dixon, C. Barr, J. Miller, C. Holbrook, M. Stickley, E. Michener, P. Smith, M. Lafferty, C. Mayr, J. Ross, P. Bogart.

Bowman 100 points, 20 yards, 30 arrows.

Juniors- A. Crofut, Ruth Hiller

Intermediates- E. Harrison, E. Repp, M. Repp, D. Lura, S. Skow,

Seniors- B. McElroy, B. Dixon, C. Barr, J. Miller, C. Holbrook, M. Stickley, E. Michener, P. Smith, M. Lafferty, C. Mayr, P. Bogart.

Bowman First Rank, 130 points, 20 yards, 30 arrows.

Juniors- A. Crofut, R. Hiller

Intermediates- S. Skow, E. Repp, M. Repp, D. Lura

Seniors- B. McElroy, M. Stickley, C. Holbrook, J. Miller, C. Barr, E. Michener, Penny Smith, M. Lafferty, C. Mayr, J. Ross, P. Bogart.

Bowman Sharpshooter, 160 points, 20 yards 30 arrows.

Juniors- A. Crofut

Intermediates- E. Repp, D. Lura, S. Skow

Seniors- J. Ross, M. Lafferty, P. Smith, E. Michener, C. Barr, M. Stickley, B. McElroy.

Archer, 100 points 30 yards, 30 arrows

Intermediates- E. Repp



Seniors- B. McElroy, M. Stickley, J. Miller, E. Michener, P. Smith.  
Archer First Rank, 130 points, 30 yards, 30 arrows.  
Intermediate- W. Repp  
Seniors- P. Smith, E. Michener, M. Stickley  
Archer Sharpshooter- 160 points, 30 yards, 30 arrows  
Intermediates- E. Repp  
Seniors- P. Smith E. Michener

#### SWIMMING AWARDS

Those who received their beginners certificates were Linda Finkenstadt, Judy Berner, G. Terpolilli, T. Hauber, A. Montiane S. Cadmus and B. Mitchell.

The Intermediate swimmers were G. Hauber, P. Mallroy, B. Dixon, J. Miller, P. Bogart, C. Craig, H. Roache, L. Harrison.

The swimmers under Miss Cookies direction that received their diplomas were J. Bachner, P. Smith, B. VanDerheyler, S. Windle, V. Davis, G. Irvin, A. Crofut, J. Scott, B. Clark, G. Hauber, B. McElroy.

Miss Cookies Junior advanced certificates were G. Hauber, P. McElroy, C. Nesbit and E. Clark.

The advanced swimmers were J. Crofut, C. Holbrook, M. Stickley, E. Michener, A. Wolfinger, C. Barr, P. Smith, M. Lafferty, J. Ross, M. Repp, S. Skow, J. Scott, B. A. Craig, S. Mayr, E. Repp, C. Mayr, V. Davis, and G. Irvin.

The Junior Life savers are E. Repp, S. Mayr, G. Irvin, B. A. Craig, and J. Crofut.

There were two boating awards presented this year. They were for canoeing, C. Mayr and rowboating, P. Repp.



### BEST CAMPER

This is what every camper strives for, being a best camper. The things we looked for in you were your co-operation with your fellow campers as well as counsellors, your attitude, character and your obedience, camp spirit and achievement in camp. The people whom we found best, measured up to these standards were De De Deininger for the Juniors, Barbara Larch for the Intermediate and Jane Ross for the Seniors.

THE STAFF



## LAST WILL AND TESTAMENT

You see, the other day while cleaning up the lodge, we found an old paper containing the Last Will and Testament of the campers and so we decided to let you read it too. Here is what we found.

### LAST WILL & TESTAMENT OF YE OLD 1949 CAMPERS

A pair of scissors is willed to Dickey Lura to cut her hair with, we leave Bonnie McElroy's height to Marilyn Burns, Betty Jane Merrill's ballet steps to Penny Smith, Arlene Momjians quietness to Linda Finkens-tadt, Gail Lecher's brother to Miss Curley, Carol Barr's gracefulness in swimming to Carol Nesbitt. Ellen Michener's golden locks to Ginny Crofut, Christa Mayr's baseball technique to Beverly Mitchell. We leave Nursie a bottle of merthiolate and a carton of band-aids. Miss Jo's pep to Bobbie Clark, Miss Phyl's bubble gum to Susie Mayr. Janice Miller's legs to Sally Cadmus. Clara Holbrook's ability at life saving to Gail Irvin, Grace Hauber's voice to Johanne Scott. Mernie Lafferty's curley hair to Nanny Holbrook. Beth Ann Moffses's charm to Bette Ann Brama. Jane Rosses acrobatic ability to Ann Crofut. Dianne Deininger's (Dee Dee) femininity to June Saunders. A Pair of Dark glasses to Miss Ann. Judy Snyders smile to Phyllis Bogert.



Judy Snyder's smile to Phyllis Bogert. Miss Nancy s  
Toni to Marcia Klinge. Ann Wolfinger's tan to Barbara  
Dixon. Peggy Hauber's sugar daddy to Miss Hilde. Mary  
Stickley's jokes to Miss Froggie. Miriam Repp's dramatic  
sense to Vaughan Davis. We leave Helen Rasche a hair net.  
Betty Ann Craig's backdive to Eleanor Harrison. Judy  
Reyner's pigeon toes to Carol Craig. To Miss Pat, a  
longer pair of shorts. Miss Sue a pair of shorts to  
replace the ones Miss Corky borrowed. We leave Ruthie  
Hiller's K ranch to Gloria Terperilli. We leave Sandra  
Skow some nice, dull pajamas. Mrs Ann a winter of  
peace and quiet from Bunks six and seven. And last  
but not least a new typewriter for the office.

SIGNED

P. F. G. CAMPERS



## PHOPHECY

Tonight the stars will reveal what the future holds in store for us. We don't have to look very far for the stars, because we have our own right here in camp. Our future Dinah Shore is "Princess" Ruthie Hiller of Bunk 2. Speaking of stars, did you ever see those dancing stars in Judy Snyders eyes? Bet she'll be a second Judy Garland.

It seems that in 15 years Pavlova will be having keen competition with our up and coming Ballet star, B.J. Merrill.

Barbara Clark's destiny we see is a beautiful ranch at Las Vegas. But wait! The solar system seems to be slowing up. We see Miss Pat directing at M.G.M. and there's Miss Phil accompanying the Philharmonic. Miss Curley and Spike Jones have just become partners, and just a second, a falling star just informed us that Miss Nancy has just joined the Boy Scouts of America to play her Bugle.

Dickey Lura has just become editor of the New York Times. And oh! guess what, Vaughan Davis just opened her own bakery and we see her now stirring up another batch of those delicious brown mudpies. We also see Beverly Michell has just made the Olympic swimming team. Looking at a little star way over in the corner of the heavens we see that Maya Gelbert is running for Presidency (of the dog-pound).

Far, far in the future we see Fritzy-gee running for Miss America and Peggy Hauber being Camp Directress.

Millions of miles out we see a star advertising Gail Irvin's new book on etiquet.

A star a little closer to us, perhaps only 10 years away, tells us that Miss Froggie finally passed History at Abington.



THE CAMPER

The Square Dance  
by Jane Koss

Everyone likes to square dance, especially if you can do it right. Last Monday, Bunks 6 and 7 went up to social hall to learn how to square dance, and we had a lot of fun doing it. We went there at 8:00, because many people were there and danced for practically an hour with little rest. It was very tiring, but loads of fun. There were three squares, and we did such dances as "The Virginia Reel," "Solomon Hevi," "Golden Slippers," and "The Spanish Cavalier." There was only one trouble and that was we danced to records and you can't understand the caller very well. We went over them all first. Everybody enjoyed herself and we hope that we can go back soon.

The Man-Hunt  
by C. Fritz & A. Monjiam

Friday evening, July 7th, we went on a man-hunt. Three counsellors made a trail with white paint. This trail led us to Bates Woods and the lake. Everyone looked all around and could not find them. Then the counsellors said that we better go back to camp before it gets dark. We all went back to camp. A couple of girls in Bunk 2 were walking around the wash house and B. J. thought she saw someone on the roof. They waited a little while, and then they saw Miss Conky, Miss Clara, and Miss Sue.

Bunks 2,4,6, and half of 7 were on the same team so they all received a candy bar. The other half of 7 and Bunks 1,3, and 5 were on the other team so they had to go through the paddles.

The spotlight

- |              |              |              |
|--------------|--------------|--------------|
| A-ttractive  | C-ute        | J-olly       |
| N-ew         | A-mbitious   | E-ager       |
| N-eat        | R-are        | A-ctive      |
|              | O-pen minded | N-ice        |
| K-ind        | L-oud        |              |
| E-xciting    |              | Y-oung       |
| L-ively      | J-oyful      | O-utstanding |
| T-all        | A-dorable    | W-itty       |
| I-nteresting | C-amber      | E-njoyable   |
| N-ice        | O-otstanding | L-ively      |
| G-entle      | B-oy         | L-ikeable    |

The Eyes and Ears of P. F. G.

Roses are Red  
Violets are Blue  
P. F. G. is good to you.  
by Helen Eagle

Food, Food  
Thanks to the chers, Walter and George, I believe everyone in Camp will go home well fed. Already many of the girls have gained unexpected weight. Our meals are both delicious and we all look forward to them.  
by Grace Hauber



## Fashion Show

Friday night, July 14, a fashion show was given by the campers. In bunk I, there were 2 clowns, 1 cowgirl, 2 Sunday dressers, 2 girls who wore pinafores, 2 school girls. In bunk II there was a little girl, 4 old fashioned ladies, 1 pirate, 1 Spanish bride, 1 Indian girl, 1 sailor boy. In bunk III there was 1 dress from Paris, 2 women in the 19th century, 1 old colored scrub woman, 2 buns, 1 girl from Hawaii, 1 opera singer, 1 two headed and four legged woman, the girl who didn't know how to dress. In bunk V there was what a little girl wears when she takes her poodle out for a walk, what a young man wears on a date, what the young girl wears on an afternoon date, what the evening date will wear, how to make an evening gown out of a plastic raincoat, what you can do with 3 scarfs preparations before the date, what you look like after the date, the fashions in "53".

In bunk VI I went shopping, 2 typical wash day costumes were modeled, 1 modeled an evening gown, 1 wore a bustled back bathing suit, 1 wore a surf suit, 2 wore cocktail dresses.

In bunk VII I went to bed, I went to a garden party, I went out for an evening. I went out for school, I was relaxing, I took rumba lessons, I showed going to bed and getting up.

Everyone was so good that the counselors couldn't pick out who was the best.

### The Camper suggests:

- That Mr. Wirsch be here at the time he says he will.
- That we have devotions at flag raising.
- That we salute flag when it's up instead of while it's going up.
- That we don't hook the flag up before hand.
- That the flag pole be straightened.
- That we get a new diving board.
- That we have more boating and canoeing for Seniors and Intermediates.
- That we have swimming at night, skinny-dipping or otherwise.
- That we discard old uniforms and wear green shorts and white blouses.
- That they keep interesting programs coming.
- That we have more interesting arts and crafts projects.
- That drama be cut out to make room for music (camp songs)
- That the bunks be repaired.
- That we get new mattresses.
- That the badminton courts get fixed.
- That we be allowed to sing at the table.
- That we change campers as well as counsellors at the table.



ORCHIDS AND ONIONS  
by Tadpole

Orchids to Miss Janet for putting up with the Senior drama class.

Onions to the lake for being so cold.

Orchids to Bunk 7 for being the finest honor bunk of the year.

Onions to the weather for being so rainy.

Orchids to Arlene Monjian for letting Bunk 5 take a picture of her (by force) in a towel.

Onions to the soupy melted butter.

Orchids to the chef for the good food.

Onions to the person who left the iron on in the lodge.

Orchids to the makers of "Love" comics.

Onions to Bunk 5 for taking that fatal picture.

A. N. A. Column

ATTENTION: Any complaints or suggestions having to do with camp, come to Barbara Dixon in Bunk 6.

Lost: small key to a toy poodle  
Lost: gold top of a pen  
Lost: transparent bathing cap case  
Lost: one black comb  
two transparent combs  
one pink comb  
one pink comb and brush

Lost: one ear plug  
Lost: one white bathing suit with multicolor polka-dots  
Lost: one red sweater with white buttons  
Found: one red and white half-made lanyard

The Blow Torch Didn't Work  
by William Kepp

The night was dark and foggy. A tall man with a tan trench coat on and a gray hat pulled low over his eyes, nervously walked up to the window of a Pawn shop. Seeing nothing he walked around the block for the 55th time. Then nervously peered into the window and seeing nothing again said a few delicately chosen words. Meanwhile, inside the shop two men were standing in a little dark room. One was tall and very thin with bright red hair, while the other was short, fat and quite bald. The tall one was called Fats and the fat one called Bones. They turned and opened a little door, and walked down to the sub sub basement, where the safe was. Bones carried a bag shaped like a doctors kit, but it did not contain pills. They walked over to the safe and set to work. Quietly? Hey Bones, hand me the blow torch, said Fats. Bones silently handed him the Blow torch.



There was complete silence in the room. Bones rubbed his face several times. Fats then said, Are you all ready? Sure, replied Bones. There was a little noise made by the clicking of the blow torch. Hey, muttered Fats. Whats the matter? questioned Bones. The blow torch does not work. Press the button again, said Bones. There was silence again. There was a clicking sound, and a few delicately chosen words again by both men. All of a sudden the over head light clicked on. A man in a tan trench coat and a felt hat now pushed back calmly stepped forward. He put a pair of hand cuffs upon the two men. You are fellows, the man said to them, after explaining he was a detective You didn't hook your blow torch up. So that is why it happened. said both men. Yes, the blow torch didn't work.

### GREEN AND WHITE COMPETITION

Camp is well under way, and with it our green and white competition has begun.

Miss Janet, the Indian dancer unearthed the traditional hatchet at our first campfire. The hatchet was designed to resieve team spirit, and start the ball rolling each season.

Last Monday evening, the green team nipped the whites in relay races at the lodge. The juniors and intermediates participated.

Late in the week, the seniors got a volley ball game going, in which the whites captured five points for their team. The intermediates also had a game of kick ball, and the greens rallied. Then the juniors had some more relays, and the whites came out on top.

Monday evening was a green and white one, the seniors playing soft ball and the intermediates enjoying some volley ball. The tally was five points for the greens contributed by seniors and five points for the whites, contributed by the intermediates.

There is a great deal of hustle and bustle coming from the intermediates, they are making hand puppets. Bunks 3 and 4 are participating. Bunk 3 is presenting the play Goldilocks and the Three Bears. While bunk 4 is presenting Hansel and Gretel. Doubles are made of almost all the puppets incase some don't turn out as well as others, even though they are all very nice.

One of the most unusual looking puppets belongs to Barbara Goulz. He is a clown, and an announcer for Hansel and Gretel. The puppets heads are built up with paper, and then are baked or allowed to dry. Then painted. Dresses are made, and low and behold the puppet is made. Lets hope that the puppet: snow is as much of a success as the puppets are.

Jokes by Carol Fritz

Mike: Do you like codfish balls?

Pat: I don't know, I never went to one.

Does your mother ever spank you? Yes.

Does your daddy ever spank you? Yes

Which hurts the most? I do.

New Yorker: That, madam, is a sky-scraper.

Visitor: Oh, I wish I could see it when it's working.



MOTHER AND DAUGHTER DAY  
Nehette Chapman

On Wednesday the 25th of July, P.F.G. Camp held the first Mother and Daughter Day. In the afternoon we had relays in the water, green and white competition. One of the many hard tasks was to carry a ball on a spoon without dropping it. One of the hardest jobs was to carry a lighted candle from the dock to the raft. If the candle went out the rules were to go back again to get it lighted.

In the beginners pool the children played tag and also dove for spoons.

Adding up the score we found that the white team won. Even though the green team didn't win, we were all happy that we entered the relays.

After the relays, everyone went to the falls for dinner. After dinner we had a softball game between the mothers and counsellors and campers. Believe it or not the mothers and counsellors won! After that most of the mothers went home. We all had a wonderful time and I hope we can have Mother and Daughter day again next year.

Congratulations!

To the Campers and Counsellors for making our First Mother and Daughter's Day at P.F.G. such a grand success. The Cabins were delightful and beautiful. To the winners who justly deserved their prizes may we say Congratulations again!

Mrs. Anne

Bunk Four's Gingerbread House

We, the girls of bunk 4 had a wonderful time fixing our gingerbread house up. Everyone was tempted to go on the roof. We started making our patterns on Monday and worked every time we had time too. We finally got it done. It was worth all the work. We won the prize!

by Judy Keyner

Orchids and Onions

by Tadpole

Orchids to bunk 5 for winning first prize in the cabin decorations.

Orchids to the other bunks that won and got honorable mention.

Orchids to Dixie for bearing up so nicely in her accident.

Orchids to the counsellors for preparing a swell show. We all know it will be a great success.

Orchids to Walter in the store for his gifts of Cookies for our Kmas Party.

Orchids to Mrs. Baer (Carole Springsted's Aunt) for the pretzels sent for our Kmas Party. Carole is one of our Campers.

Onions to the judges because they didn't pick all the cabins.

Onions to the water for being cold so much.

Onions to the horse for stepping on Dixie's foot.

Watermelon at P.F.G.

On Wed. night the whole camp went on it's usual hike. Some cabins went to the falls or the lake and many other places. There was something different about this particular night. For the camp was to have a watermelon party and an evening clip afterwards. Just about everyone loves watermelon so we were very delighted to hear about the party. From bunk one up to and including bunk four ate their watermelon at the wash house. The seniors (the lucky coys) were allowed to eat theirs at Vesper Rock. When the water melon had been disposed of and the last city race was on, the Juniors took off for the lake. About a half hour later the Intermediates and Seniors followed in their foot steps. Then we got back to camp and tumbled into bed. We were tired but happy. We knew the party had been successful.

by Edwina Repp



July 21

WISHING WELL

8 2 7 3 6 2 8 4 7 2 5 8 2  
 H Y P C S O I L R U A G H

7 6 2 5 4 8 2 7 3 8 2 6 8  
 A U E S O I L Y A S F I O

2 8 4 6 2 7 3 5 2 8 6 7 2  
 S O V S E L S T L I H R F

4 2 5 3 8 2 6 4 7 3 2 6 8  
 E B R A I Y I I F O F N L

2 8 4 6 2 7 8 3 5 4 6 2 7  
 A F S O C A R F O Y S I V

6 2 5 3 8 4 2 7 6 8 2 3 4  
 E R L T A O G O A I L L U

6 8 2 4 6 2 5 3 5 7 6 2 8  
 H S I R C F L N S R H L E

Here is a numerical puzzle designed to spell out your fortune. Count the letters in your first name. If the number is 6 or more, subtract 4. If less than 6 add three. The result is your key number. Start at the upper left-hand corner and check your key numbers, left to right. Then read the message.

Parting is always a sad thing and to the Campers leaving us, may we say we're sorry to see you go, but hope we may see you again some where along the Way of Life. Good luck in the coming year. We hope you are taking home with you many pleasant memories. It was grand to have you with us and we hope to see you more again. We shall just say "So long, for now" Mrs. Anne

On Wednesday, July 26th, we the campers of P. F. G. took up crepe paper, thumb tacks and etc. We all worked very hard all morning but by lunch time we were well satisfied by the results. Described are all the cabins.

- Bunk 1. An indian scene with the children acting out the killing of buffalo.
- Bunk 2. Had transformed their bunk into a magical Elfland. They had elves and bugs dancing all around.
- Bunk 3. They had made a zoo with all sorts of animals including a rare pink dog.
- Bunk 4. They had made the gingerbread house from Hansel and Gretel. They acted out the story.
- Bunk 5. They had a beer garden called Dew Drop Inn. They had a skit.
- Bunk 6. Had Paradise Falls with a canoe, bathers, and sightseers, and also fishermen.
- Bunk 7. Had an old fashion barber shop and a skit.

The winners were Bunk 5, Bunk 4 and Bunk 1. Bunk 1 got sundaes and Bunk 4 and 5 went to the movies.

Christmas

On July 24th began our Christmas program. It was Christmas Eve when we all went over to the lodge for our evening program. We started out by singing carols. Then Miss Corky read us a lovely story. After that we sang carols and Mrs. Ann gave us a lovely talk, which we all enjoyed. Then we went back to our bunks and hung our stockings. After we were all in bed the Counsellors sang more carols for us which put us to sleep. Or at least some of us. During the night Santa came and filled our stockings for us with oranges and lollypops. Next morning we woke up and all the bunks were wishing each other a merry Christmas. And as the day we were allowed to do anything we wanted to. Some of us went swimming, and some of us did other things. All through the day we did the things we enjoyed the most. At night we went and sang more carols and Miss Clark read us the Christmas story and Santa came and left us gifts. That was our Christmas in July.

Helene Morrison

# DRAMA







THE CREATIVE GIRL CAMPERS PUT ON ELABORATELY  
SCRIPTED AND DECORATED DRAMAS ON THE RAFT STAGE  
IN MID-LAKE. Their audience watched from the shore.



Campers who could stay for a month had time to practice & perform.

LAKE - CANOEING

(Note 2 docks, beach on cottager side)





## BASE OF FALLS SWIMMING



Early girl campers sometimes had an adventure climbing, wading and swimming below the falls.



## 1929-1939 POND SWIMMING

Paradise Falls dammed up the area in front of Schajawonge cottage (roughly from today's dam location to the curve in the stream). Campers could swim on the far side accessed by a foot bridge strung across the stream, midway between curve & car bridge



LAKE - SWIMMING ARRIVED IN 1939

Sitting logs on-shore

Access to mid-lake raft



# LAKE - WATER-SLIDE!

Campers used the buddy system with pin-on tags kept in a wooden buddy board at the base of Segraves hill.

That same board (and badges) were brought to cottager beach and used for the safety of 1950's swimmers.





LAKE - DIVING BOARD OFF RAFT!



Camp Paradise Falls

4

Zamsky Studios, PH

LAKE - DIVING

LOW BOARD (on shore & on raft)  
HIGH DIVE



Camp Paradise Falls 1941

late lake improvement was  
a high dive on Girls Camp side.  
Members could enjoy it at  
other hours.





## CAMP ANECDOTES -

Many cottage teens had their first jobs either working at P.F. or at its on-site camp -

Meta Wilson 1942 waitress in Camp Dining Hall  
1943 swim counselor at camp

Betty Blair @ 1949 Camp Counselors  
Nancy

Hildegard Pohl - 1949 Camp Counselor

Other cottagers attended as campers -

Shirley Dierolf and Clarella Lechler came to camp 1936-39

They remember:

- Once per week horseback riding on Besecker contracted horses
- Elaborately staged and costumed dramas
- Sending laundry home by mail
- Exchanges with Camp Miller Boys camp (Shawnee on Delaware) - dramas, dances



GIRLS CAMP DINING HALL IS PICTURED HERE BECAUSE THE CAMPERS ATE ALL THEIR MEALS OFF THE CAMPSITE AT ANESTLEDOWN ADDITION BUILT @ 1932 FOR THEIR EXCLUSIVE USE.



The dining hall served the same food as that served to P.F guests, so the three walks to and from their cabins was well worth the time & energy involved!

Please find full account of the dual life of this building in the

NESTLEDOWN BINDER

#1- Camp Dining Hall  
Nestledown @ 1931-1952

#2 Teen Rec Hall  
Camp Area @ 19 -





# PARADISE FALLS GIRLS' CAMP

(Under Auspices of Paradise Falls Lutheran Association)





## THINGS YOU WANT TO KNOW

**LOCATION** At Paradise Falls in the Paradise Valley of the Poconos on the reservation of the Paradise Falls Lutheran Association. 1,000 feet elevation.

**MAILING ADDRESS.** Paradise Falls Girls' Camp, Paradise Falls, P. O., Cresco, Pa.

**SHIPPING ADDRESS:** P F G. Camp, Paradise Falls Lutheran Association, Cresco, Pa.

**TELEPHONE.** Call Stroudsburg, Pa., and ask for the Paradise Falls Lutheran Association.

**TELEGRAMS.** Paradise Falls, Stroudsburg, Pa.

**SIZE OF CAMP:** Limited to 70 campers. One counsellor to every five girls.

**AGE:** Junior Camp, 6 to 12 years inclusive. Senior Camp, 13-16 years inclusive.

Leave Camp—Visiting Sundays only with parents between 1:00 and 5:00 o'clock.

**WHAT TO BRING:** Consult the accompanying equipment list. Be sure to mark everything plainly. The Camp is not responsible for lost articles. In order to facilitate the checking of young camper's equipment at the time of arrival and departure, parents are requested to supply the cabin counsellor with a duplicate of the camper's equipment list on the day of arrival.

**UNIFORMS:** Worn on all occasions. Must be ordered through the camp office specifying number and size of uniforms desired. Check in full must accompany each uniform order, cost of uniform is \$4.00.

**COUNSELLOR-IN-TRAINING COURSE** An attractive special feature offered to the older campers without extra charge.

**SPENDING:** Not more than ten cents per day for candy or ice cream. Toilet articles, writing paper, stamps, magazines, &c., are extra and are not included in the ten cents a day for spending allowance. Special permission must be given to allow the purchase of souvenirs and gifts. No canteen credit will be extended to a camper without written permission from parent stating the amount of credit, if any, to be extended to the camper.

**CAMP BANK** No money allowed in bunks. All money must be deposited in the Camp bank. Failure to do this is considered ample grounds for expulsion from camp.

**VISITING DAYS** Visiting Sundays.

**AUTOS.** No camper is allowed to have an auto in camp. Counsellors only by special permission.

**LAUNDRY:** Can be sent home or cared for by regular laundry service at camp at reasonable rates.

**PARENTS:** Accommodations for parents can be had in the restful rooms and the attractive dining room of the Association at moderate rates, but reservations should be made in advance.

### HOW TO REACH PARADISE FALLS

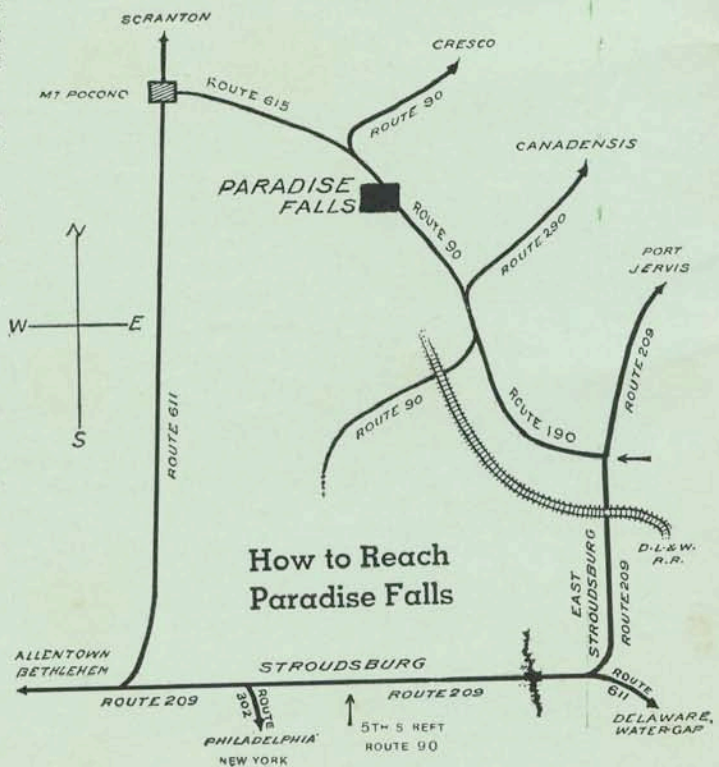
**BY AUTO—From Philadelphia and New York** Via. Stroudsburg and East Stroudsburg. Route 209 through Stroudsburg and East Stroudsburg to Route 190. Follow Route 190 about 3 miles to Route 90, then 7 miles on Route 90 to Paradise Falls.

**From Scranton and Wilkes-Barre** Via. Mount Pocono. Follow Route 611 to Mount Pocono, turn left to Route 615, three miles on Route 615 to Route 90, then two miles on Route 90 to Paradise Falls.

**BY TRAIN—From New York City** Via. D. L. & W. to East Stroudsburg. **From Philadelphia** Via. Penna. R. R. to East Stroudsburg.

**BY GREYHOUND BUS—From Philadelphia and New York City** to Paradise Falls. Consult time tables for Bus Schedules.

Paradise Falls busses will meet campers at Railroad and Bus Terminals on call. Phone Stroudsburg 775-J-2.







## **AIMS**

THE WELL BALANCED camping program at P F G. aims to assist the physical, mental and spiritual development of girls 6 to 16 years of age.

## **LOCATION**

IN A REGION of forest and valley, fragrant pines and stately hemlocks, clear streams and cascading water-falls, lies P F G. Camp on the banks of Paradise Creek. A short distance downstream brings one to the well-known Paradise Falls, one of the scenic spots contributing to the surpassing beauty of the famous Pocono Mountain area.

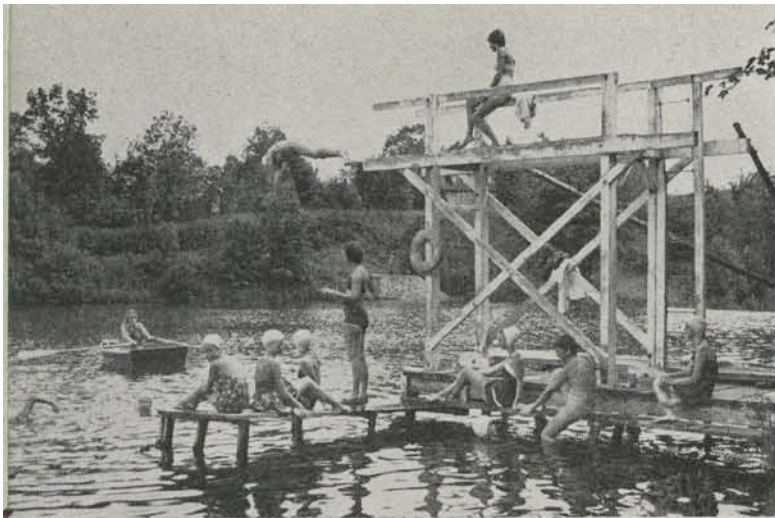
## **CLIMATE**

THE INVIGORATING air, warm sunny days followed by brisk, refreshing nights, provide a climate ideal for camping.

## **STAFF**

A CAREFULLY selected staff of counsellors under the competent supervision of a well trained and experienced Directress executes the well-considered program of activities at P F G.





## ACTIVITIES

ACTIVITIES dear to the heart of the camper fill the hours of the days at P F G with thrills and happiness.

## SWIMMING

INSTRUCTION in swimming and diving in beautiful Lake Crawford, with careful attention to each swimmer's progress. These non strenuous periods are marked by the sportsmanship and fun which make water-front activities one of the most attractive features of camp life. Advanced swimmers are instructed in life saving.

THE RESULTS of the summer's instruction is climaxed by an Aquacade in which all the campers participate at their own level of achievement. Awards based on accomplishment are given.



## ATHLETICS

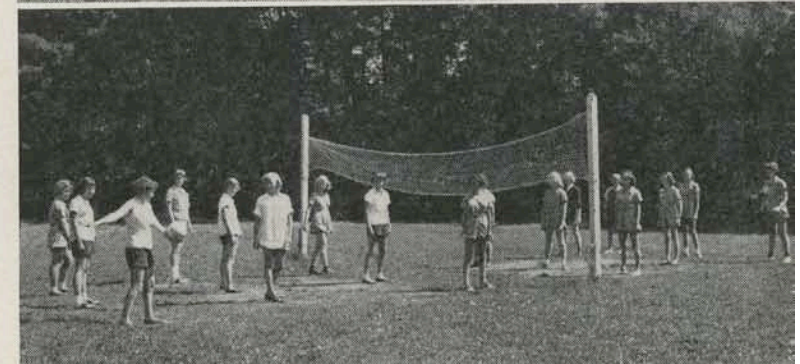
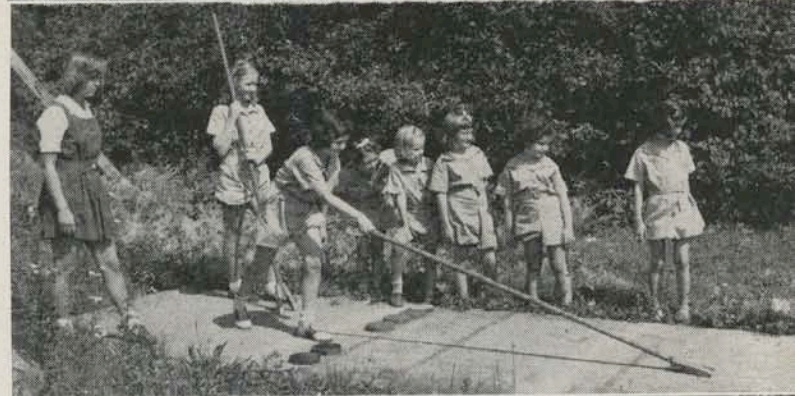
TENNIS is one of the popular sports at P F G Instruction is given to all classes of players. Archery, shuffleboard, basketball, handball, softball are other activities which round out the athletic program.

## DRAMATICS

PLAYS, operettas, and variety programs afford the camper an opportunity to display and develop her dramatic talent. Much incentive is offered P F G Thespians by the fact that selected productions are staged in the Auditorium of the Paradise Falls Resort before large adult audiences.

## ARTS AND CRAFTS

BALANCING the more active outdoor sports at P F G. is the restful and relaxing pleasure of handcrafts. Gimp, wool, felt, wood, metal, leather, and clay are the media to which balance, design, accuracy, and patience are applied with such fascinating results. The satisfaction and joy experienced in the development of creative skill in one or more of these crafts frequently provides the useful hobby which is the ever-growing need in the life of the modern girl.







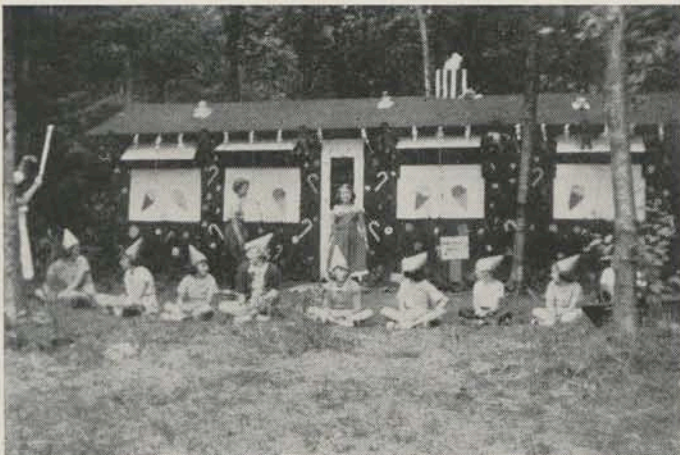
## HORSEBACK RIDING

BEGINNERS are carefully taught in the riding ring by experienced instructors. When adequate ability has been acquired to control their mounts, counsellors accompany each class along with the instructor over selected bridal paths.



## MOTHER AND DAUGHTER DAY

ONE DAY during the Camp season is planned to include both Mother's and daughters in a days activities shared by both. Cabins are decorated, prizes given, awarded in the basis of originality of idea. The day's activities are climaxed by a delightful picnic supper at picturesque Paradise Falls.





## FOOD AND WATER



ALL MEALS are served in the camp's private dining room at "Nestledown Inn," the main dining room of the Association, where only the most wholesome and tasty foods are served under the supervision of an experienced dietitian. Milk and crackers are served in mid-morning to the campers who are underweight. As the food served is adequate and well balanced, we do not encourage CANDY OR FOOD PACKAGES FROM HOME. Games, books, magazines, etc., are suggested as more appropriate remembrances in case of birthdays and other occasions.

Fresh sparkling water is supplied to the camp from our own artesian well. Camp is inspected each year by State Board of Health as to water supply and sanitation. Has A1 rating.



## BANQUET

THE CLIMACTIC highlight of the season is the annual Camp Banquet. Here, after a ritual of song and toast, experiences of the summer are reviewed. Awards and prizes are then announced, with enthusiasm reaching its height in the presentation of the BEST CAMPER AWARD.





## HONORS AND AWARDS

OUTSTANDING PROGRESS in the various activities that make up the camping program is recognized by the presentation of prizes and awards. These awards are presented as an exciting finale to each period.



CAMP P F G award emblem and pin are made to all campers who have secured the required points as set forth in the scoring schedule. The standards are so carefully planned that the Emblem is not beyond the attainment of any camper.

THE BEST CAMPER award in each division is bestowed upon the camper, who most nearly approaches the Camp ideals.

## LEADERSHIP

A SHORT, practical counsellor-in-training course is conducted for campers fifteen years or older who are interested in becoming counsellors. This course aims to develop leadership ability, stimulate creative talents, encourage initiative and bring to the fore those qualities which are prime requisites in a good counsellor. Under careful supervision and guidance this group is given the opportunity of choosing, planning, executing and evaluating camp programs as well as assuming, in a minor role, the responsibilities delegated to a counsellor or a member of the administrative staff. This special training opens up to ambitious campers a most attractive future as specially trained workers in the camping world which is becoming one of the major fields in our national recreation program.

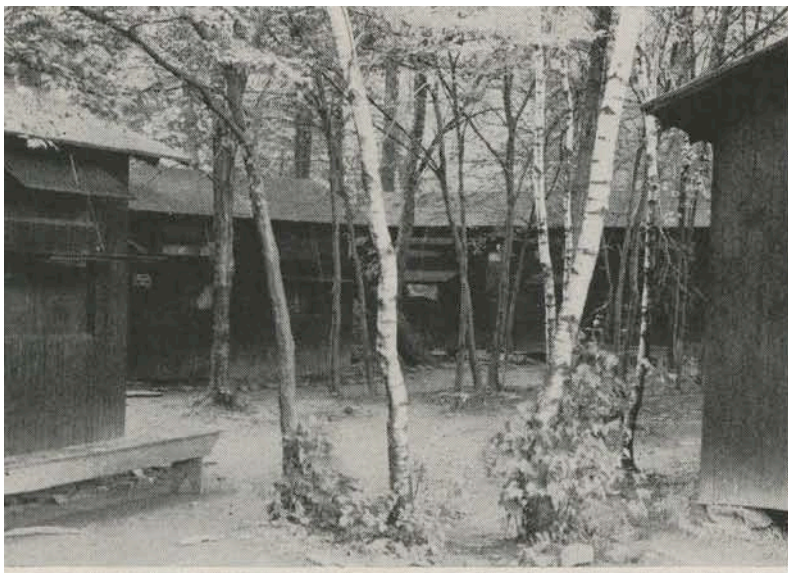
## HEALTH AIDS

TO GUARD the health of the camp as a whole, each prospective camper must present at time of entrance a medical report of a physical examination by her physician during the week preceding admission to camp. A registered nurse is in residence to keep daily watch over the campers. The camp physician and an excellent hospital are within ten miles of camp.

Hot and cold baths, showers, lavatories and flush toilets are conveniently located in central buildings.







## SLEEPING CABINS

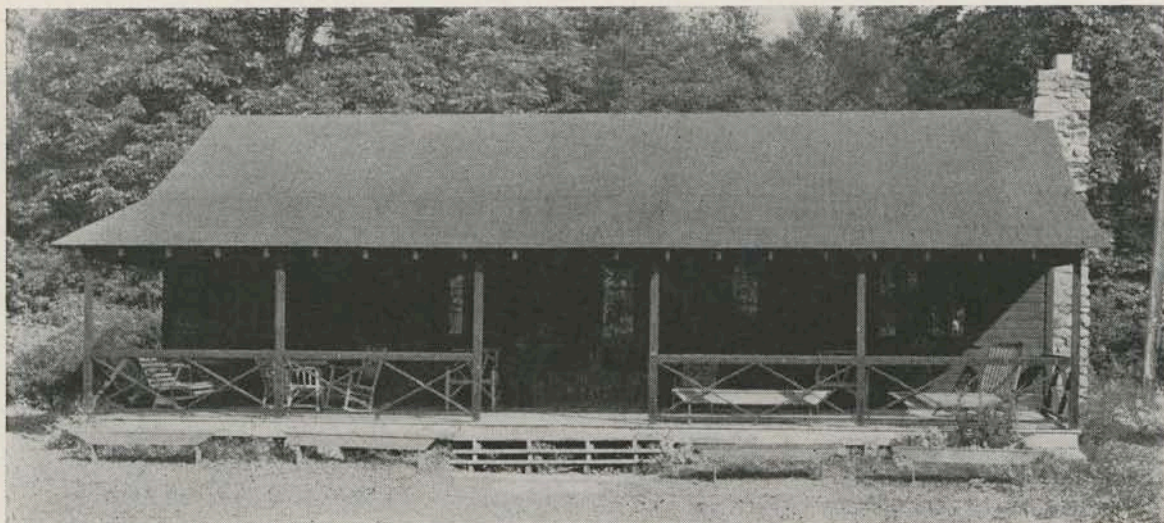
TEN CAMPERS and two counsellors form a cabin family. Campers are housed in substantial, screened, electrically lighted cabins furnished with double decker spring beds and mattresses supplied by the camp, but each camper supplies her own linens, pillows and blankets. Deep, wide shelves provide ample space in each cabin for bedding, linens, clothing and toilet accessories. No trunks are allowed in the bunkhouses but will be stored in the camp storeroom until the day of departure.



## JUNIOR AND SENIOR GROUPS

THE CAMPERS, ranging in age from 6 to 16 years, are divided into three groups: 6 to 9 years inclusive in the Junior camp, and 10 to 12 years in the Intermediate camp, and 13 to 16 in the Senior group.

All campers receive the same instruction in swimming, dramatics, nature study, arts and crafts and camp sports.







## INFORMATION FOR PARENTS

A CAMPER is permitted to leave the camp grounds on the designated visiting Sundays, between the hours of 1 P. M. to 5 P. M., ONLY WHEN ACCOMPANIED BY HER PARENTS OR AUTHORIZED RELATIVES, and is required to register at camp office before leaving and upon her return.

Past experience has shown that when campers are visited by parents too soon after entrance, difficulties of adjusting to camp life frequently ensue. In order to give the camper adequate opportunity to become oriented to camp life the Sundays following the entrance dates are omitted from the list of visiting days.

Name tapes should be placed on *all* camper's articles.

Campers are not permitted to take meals outside the camp dining room except on day of arrival or departure.

Accommodations for parents visiting campers can be had in the facilities of the Association at reasonable rates. Reservations should be made well ahead of time to prevent disappointment. Unless specifically requested, rooms will be held in reserve no later than five o'clock Saturday afternoon.

## LIMITATION AND SELECTION OF CAMPERS

P F G limits its camp to 70 girls, with one counsellor to each five campers. The degree of individual attention made possible by this policy assures such an enjoyable and profitable summer that a high proportion of P F G. campers return year after year. To maintain the high standards of P F G. campers, no girl is admitted without the endorsement of her clergyman.



## REGISTRATIONS

APPLICATION blanks with the \$10.00 registration fee should be sent in as early as possible. No camper will be accepted for any term after the limit of 70 has been reached. Campers are enrolled for the season of eight weeks or for either the first four-week term or the second four-week term.

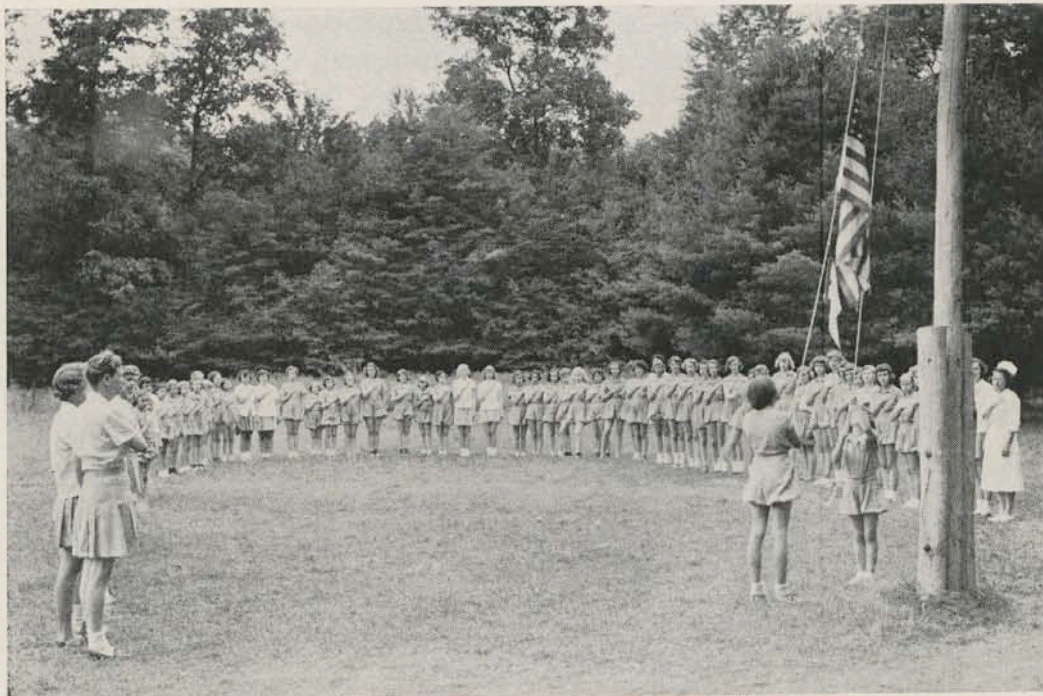
Tuition fees as noted in the enclosed circular are payable in the month of June. This is to avoid confusion on day of arrival. Riding is extra as well as the cost of materials in Arts and Crafts. All payments of fees and canteen deposits are made at the camp office upon arrival.

Canteen deposits are funds deposited with the camp to cover costs of riding, crafts, and other incidental spending as mentioned on inside of front cover.

THE CAMP has made arrangements with an old established insurance company to grant insurance coverage to the camper during her stay in camp at a very nominal premium. See special notice on inside back cover

## DAILY ACTIVITIES

7.00	Reveille (morning dip optional)	12.45	Canteen.
7.25	Flag Raising and Morning Devotions.	1.00	Mail.
7.45-8.30	Breakfast.	1.30-2.30	Quiet Hour. (Sundays 2.00 to 3.00 o'clock)
8.45-9.45	Bunk Duties Special Duties.	3.00-3.30	Swimming.
10.00-12.00	Activities (Baseball, Nature Study, Arts & Crafts, Swimming, Dancing, Dramatics, Volley Ball, Tennis, etc.)	4.00-4.45	Hobby Hour.
12.15	Dinner.	5.15	Supper.
		6.30	Flag Lowering.
		7.15	Organized Games.
		8.00	Evening Programs.
		8.45	Vespers.
		9.00	Taps.







## REFERENCES

### ALLENTOWN, PENNSYLVANIA

Mr. R. L. Clark  
 Mr. Arthur Herman  
 Mr. George Neuman  
 Mr. Clifford Roehrig  
 Mr. H. L. Snyder  
 Mr. J. Stephen

### PHILADELPHIA, PENNSYLVANIA

Mrs. John Cern  
 Mrs. Phyllis Shoemaker  
 Mr. E. Kenneth Jacob  
 Mr. Burns Lafferty  
 Sister Lydia Fischer  
 Mrs. Selinda McCaulley  
 Dr. and Mrs. A. O. Michener  
 Dr. Edward Repp  
 Mrs. Mary Porter  
 Mrs. Louise Zabor  
 Mr. and Mrs. Charles E. Hauber

### TENAFLY, NEW JERSEY

Mr. W. Bogert  
 Mr. Smith  
 Mr. E. H. Dixon  
 Mrs. Velma Hoffman  
 Mrs. Winifred Jarvis  
 Mrs. Harriet Ross  
 Mrs. Olga Thompson

### MAPLEWOOD, NEW JERSEY

Mr. and Mrs. John Hoesel, Jr.

### COLLINGSWOOD, NEW JERSEY

Mr. Meyers

### BROOKLYN, NEW YORK

Mr. and Mrs. Rudolph Hiller  
 Mr. and Mrs. Louis Tuft  
 Mr. and Mrs. Paul Teufel

### FREEPORT L. I., NEW YORK

Mrs. Dorothy Auserehl  
 Mr. and Mrs. William Finkenstadt

### FULLERTON, PENNSYLVANIA

Mr. Thomas Bogert  
 Mr. James Corl

### BRIDGEPORT, PENNSYLVANIA

Dr. Clark Brown

### HAVERTOWN, PENNSYLVANIA

Mrs. H. C. Connor Jr.  
 Mr. George Coulter

### COATESVILLE, PENNSYLVANIA

Mr. and Mrs. K. W. Deininger

### HOLMES, PENNSYLVANIA

Mr. Frank Eagle

### ABINGTON, PENNSYLVANIA

Mrs. Miriam Eble

### LANSFORD, PENNSYLVANIA

Mr. and Mrs. Fred Gallus

### AMBLER, PENNSYLVANIA

Mr. and Mrs. James Gelbert

### DREXEL HILL, PENNSYLVANIA

Mr. Albert Irvin  
 Mr. Harrison Kildare  
 Mrs. Gertrude Riddell

### EASTON, PENNSYLVANIA

Mr. John Merrill

### NORTH WALES, PENNSYLVANIA

Mrs. Alice Reyner

### CRESCO, PENNSYLVANIA

Mr. and Mrs. C. Saunders

### FORREST HILLS, NEW YORK

Mrs. J. Calcerano

### NEW YORK, NEW YORK

Mr. J. Craig

### QUEENS VILLAGE, NEW YORK

Mr. Joseph Fritz

### ROOSEVELT, NEW YORK

Mr. Clarence Kelting





BALDWIN, L. I., NEW YORK  
Mr M. S. Momjian

LAURENCE, LONG ISLAND, NEW YORK  
Mrs. Grace Nesbit

LAURELTON, LONG ISLAND, NEW YORK  
Mrs. Ida Raschi

HOLLIS, NEW YORK  
Mrs. Grace Scott

MANHASSET, NEW YORK  
Mrs. James Springsted

HIGH POINT, NORTH CAROLINA  
Mrs. George Hammond

FAIRBORN, OHIO  
Mr. and Mrs. Walter Goltz

ALEXANDRIA, VIRGINIA  
Mr. and Mrs. Newton Holbrook

SHICKSHINNY, PENNSYLVANIA  
Mr and Mrs. Edgar Scott

STRAFFORD, PENNSYLVANIA  
Mr. Norman Skow

ST DAVIDS, PENNSYLVANIA  
Mr. A. L. Smith

BALA CYNWYD, PENNSYLVANIA  
Dr Armand Sprecher

MORRISVILLE, PENNSYLVANIA  
Mr and Mrs. Kurt Wilckens

NEWARK, DELAWARE  
Mr. Ralph Jones  
Mrs. Adeline Miller

WILMINGTON, DELAWARE  
Mr and Mrs. S. J. Stickley

RANDALLSTOWN, MARYLAND  
Mr and Mrs. Gilbert Klingel

## SPECIAL NOTICE

We have approved for our campers a plan which has been in operation with gratifying results for the past five years in some of the finest camps and schools in the country

This plan guarantees to reimburse the parent for any medical expense which may arise from an accident in which the camper is injured while registered at camp, including actual travel to and from camp for a period of two days before and after the period of registration. This includes x-rays, hospital bills, nurses', physicians', and surgeons' fees, laboratory costs, medicines, and in short any medical cost incurred as a result of an accident. Bills up to \$250.00 will be paid for each accident.

This plan is guaranteed by the Indemnity Insurance Company of North America which for the past five years has handled similar plans throughout the United States.

**THIS PLAN IS INCLUDED IN YOUR CAMP FEES.**

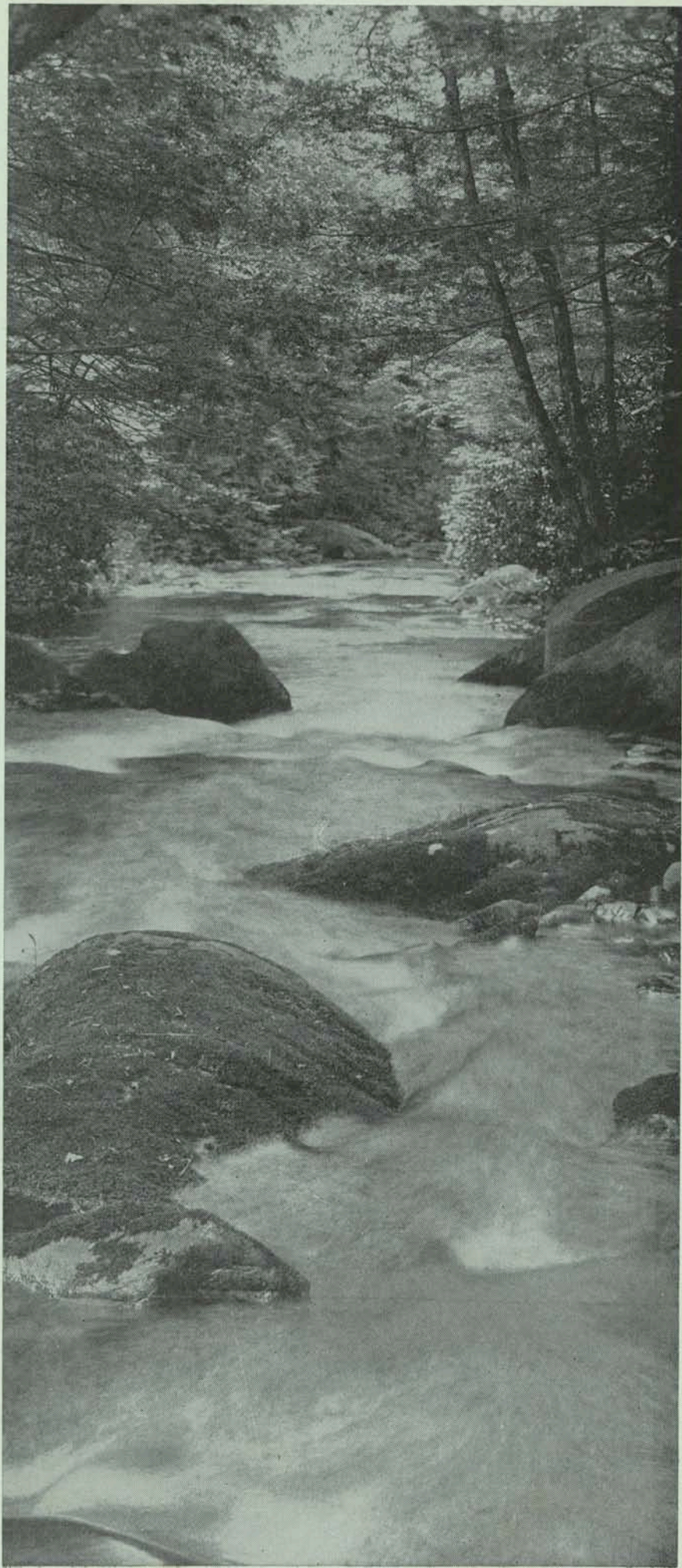
Camp fees are:

8 weeks, \$250      6 weeks, \$200 — 4 weeks, \$140      2 weeks, \$75

Registration fee of \$10.00 must accompany application.

This fee will be applied to Camp fees.







# An Association with a Purpose

## PARADISE FALLS

*Nestled in the Poconos*

In 1922 a group of Lutherans interested in the establishment of a summer colony with a wholesome Christian background and environment organized the Paradise Falls Lutheran Association in the Pocono Mountains of Pennsylvania. Its guest lists include Christians of all of the denominations, who enjoy its good fellowship, healthy environment, wholesome tone, and religious auspices. Membership entitling a member to a 100 x 125 lot for use for building of a private cottage, is limited by its Charter to members in good standing in a Lutheran Church. Sixty-eight private cottages have been erected on the grounds. Some of these are rented each year to guests, through the Association.

Paradise Falls has a summer post office, a ticket office and stop for the Greyhound Bus, a grocery store, a coffee shop, a gift shop, and its own dining facilities. Paradise Falls Girls' Camp of 70 girls of six to sixteen is under very able leadership. Lake Crawford is a private lake for boating and swimming.

*Send for descriptive folder*

### **PARADISE FALLS LUTHERAN ASSOCIATION**

**Paradise Falls, Monroe Co., Penna.**

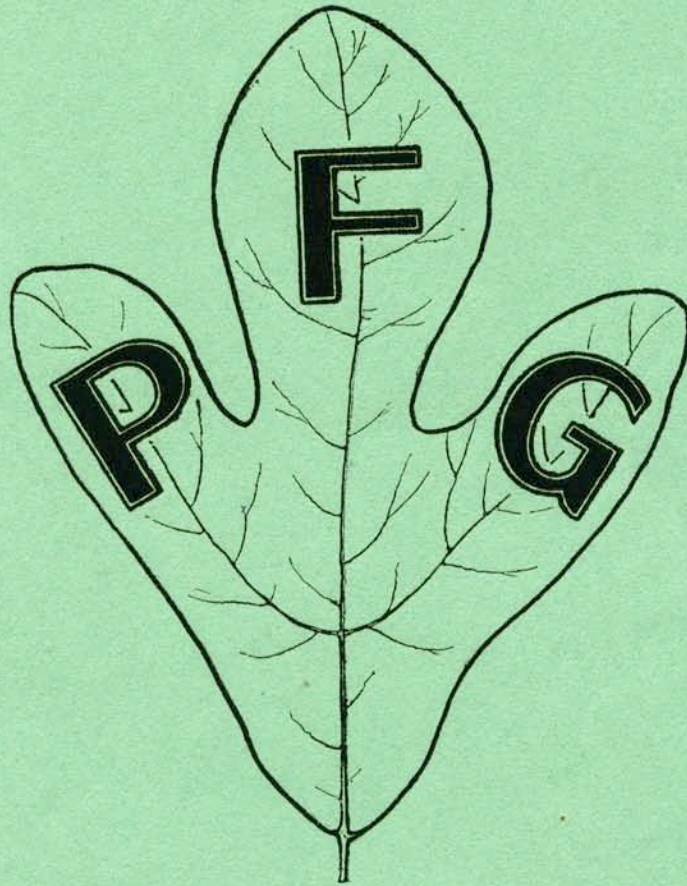
**Telephone: Stroudsburg 775 J 2**

**Greyhound Bus Stop: Paradise Falls**

**Lackawanna R. R. Stations: E. Stroudsburg,  
or Cresco, Pa.**

*[[ Our own station wagon will meet your  
arrival if we are notified in advance ]]*





Paradise Falls Girls' Camp

Paradise Falls, Pa.

1937





## Paradise Falls Girls' Camp

Conducted by the  
Paradise Falls Lutheran Association  
Paradise Falls, Pa.  
(Paradise Valley near Henryville)



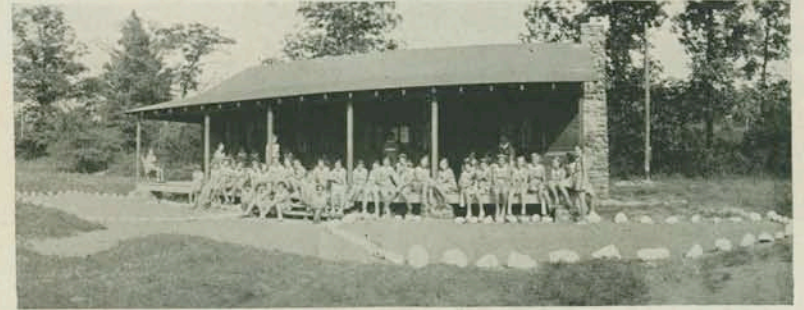
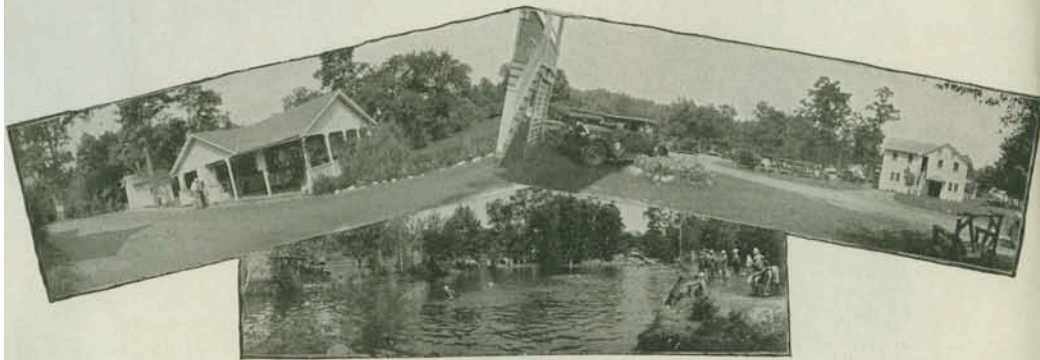




## P. F. G. CAMP

P. F. G. Camp is being conducted to meet the needs of discriminating campers who want a camp large enough to furnish a complete camp program and a large circle of new friends each season. At the same time, it is small enough to prevent the individual camper being lost in the mass of campers so large as to destroy her initiative.

Despite the inducement to enlarge the camp population so as to accommodate more applicants, P. F. G. Camp has remained true to its original purpose and has refused to accept more than seventy-five girls each week. The varied program referred to later in this brochure and the fact that the campers last season came to us from five different states, shows very plainly that the unit of seventy-five campers is large enough to meet the first requirement of discriminating campers. The large percentage of campers returning year after year and the favor-

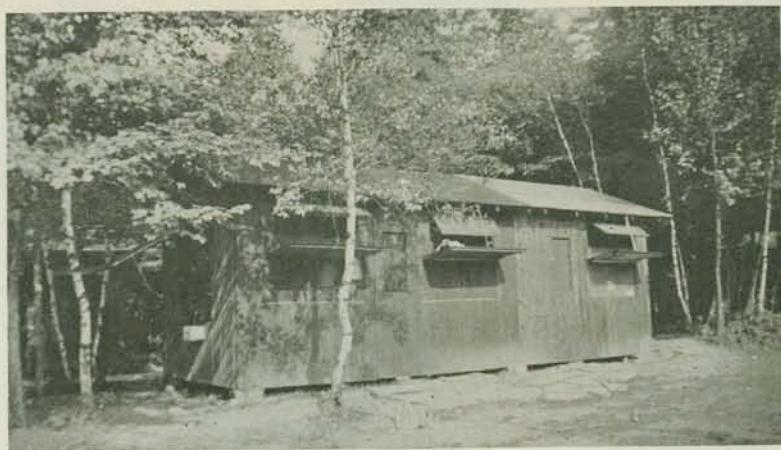


able comments of parents as to improvement on the part of campers in skill and initiative, shows that such a unit offers distinct advantages to campers in those fields wherein camping should excel.

After a careful survey of its more than 700 acres of woodland and meadow, the P. F. L. A., which is sponsoring the P. F. G. Camp, selected a site near the center of its reservation on the banks of the Paradise Creek, a short distance above the beautiful Paradise Falls, which is one of the well known beauty spots in the Pocono region. This site not only offers the natural advantages of level ground for games and sports, coolness on the warmest days and a grove of stately trees amongst which the cabins are scattered informally, but in addition, ample protection from the intrusion of undesirable wanderers, a very necessary precaution in a camp for girls. Undisturbed, in safe and healthy surroundings, P. F. G. Campers spend a summer that makes camping days never to be forgotten days.

So well known is the Pocono Mountain region of Pennsylvania that it is almost needless to spend any time in presenting its charms. P. F. G. Camp is located in the Paradise Valley in the very heart of the Pocono Vacationland. When the campers arrive the reservation is still beautiful with gorgeous mountain laurel. Ere many days have passed the camp is filled with rhododendron blossoms, forming a picture that remains in the memory long after other sights have been forgotten. Birds, trees, flowers, shrubs, all combine to make P. F. G. Camp a natural camp site. Shaded woodland paths through lovely nooks to grand vistas over the hills are most alluring to the hikers. Overnight camps, sleeping under the open skies in the midst of towering pines, form the setting for memorable experiences around a glowing campfire.





Activities dear to the heart of a camper fill the hours of the days at P.F.G. Camp with thrills and happiness. Swimming twice a day in the sparkling waters of Paradise Creek, with instruction in swimming for those unable to swim and instruction in life saving for the advanced swimmers. Tennis for beginners and advanced players on the camp's own tennis court with individual instruction for all classes of players. Shuffle-board, basketball, hand ball, playground ball within the camp area. Horseback riding over selected bridle paths with special instruction in the camp riding ring under the watchful eyes of an experienced equestrienne for those unable to ride and properly handle a horse. Arts and crafts under competent instructors. Dramatics in the camp's open-air Woodland Theatre. Story telling around the evening campfires. Ceremonial Council fires for the granting of awards. Nature

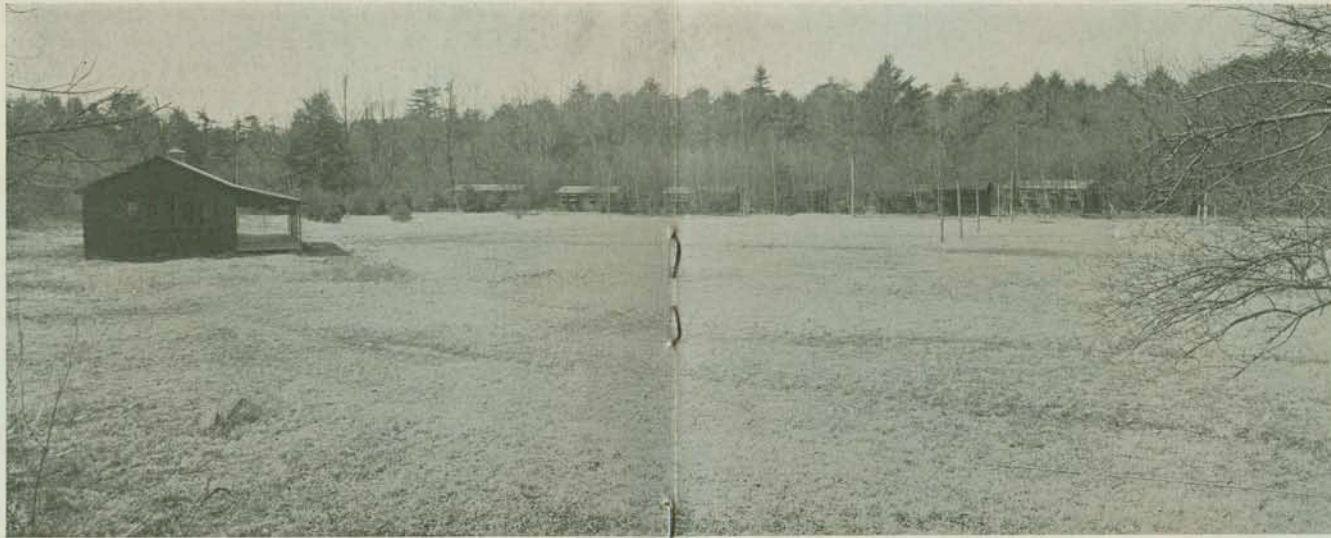


study, nature hikes and out-door trail cooking to make everyone feel at home in the great out-of-doors. Athletic and swimming contests with other camps. Treasure hunts, games, stunt nights, picnics with their mirth and music. Not a dull moment all summer.

The religious program includes daily morning and evening devotions, grace at all meals and religious instruction once a week. On Sunday campers attend the Sunday school and the services of worship conducted by the Association. All campers, regardless of their religious affiliations, must participate in these programs for the development and the conservation of the spiritual side of life.

The personnel of the camp is composed of former P.F.G. campers and their friends whom they recommend for camp. To assure the





maintenance of the high standards established, no girl is admitted without the approval and consent of her parents or guardians and the endorsement of a clergyman. To guard the health of the campers every prospective camper must undergo a physical examination by her family physician during the week preceding her admission into camp and must bring her medical report with her. A registered nurse is on constant duty in the camp to keep daily watch over the campers and their well-being.

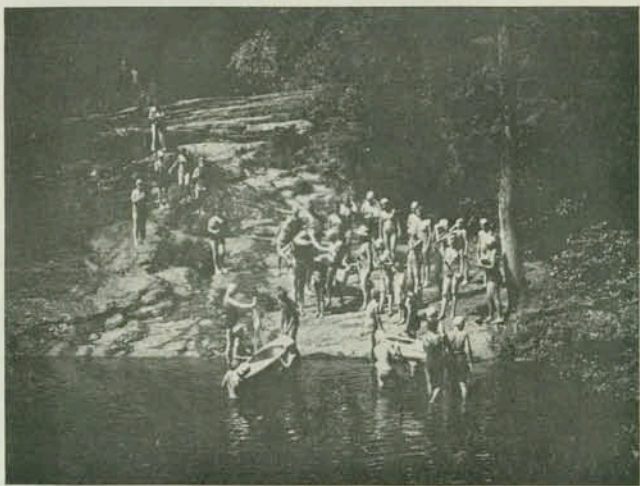
The campers, ranging in age from 8 to 16 years, are divided into two groups 8 to 12 years inclusive in the Junior camp, and 13 to 16 years in the Senior camp. Ten campers and two counsellors form a cabin family. Campers are housed in substantial, screened, electrically lighted cabins furnished with double-decker spring beds and mattresses supplied by the camp, but each camper supplies her own linens, pillows and blankets. There is ample space in each cabin for luggage, clothing and toilet accessories. Fresh sparkling water is supplied to the camp from its own artesian well.

All meals are served in the camp's private dining room at "Nestle-

down Inn," the main dining room of the Association, where only the most wholesome and tasty foods are served under the supervision of an experienced dietitian. As the food served is adequate and well balanced, campers are not permitted to receive candy or food packages from home.

This season P.F.G. Camp will be under the directorship of Miss Dolores Ward, head of the Department of Health and Physical Education at Beaver College, Jenkintown, Pa. A graduate of Teachers College, Columbia University, with the degree of B.S. in Physical Education, she has pursued graduate studies at Cornell University and at the University of Pennsylvania. In the field of camping she has had a wide range of experience that fits her for the position she is assuming at P.F.G. Camp. In addition to taking the Camping and Counsellor Courses at Columbia University she has been a camper at the Physical Education Camp, Camp Saneo, Corinth, N. Y., Counsellor and Director of Field Sports at Camp Wenonah, Naples, Maine, and Counsellor and Director of Nature Study and Dramatics at Camp Keora, Merrill, N. Y. Miss Ward will be assisted by a carefully selected staff of trained counsellors to assure to each camper the finest type of leadership.





Application blanks with the \$2.00 registration fee should be sent in as early as possible as no camper will be accepted for any period after the limit of 75 has been enrolled. While campers are accepted for two week periods, parents are urged to enroll campers for at least a month to enable the camper to get the greatest benefit possible out of her stay at camp. For campers staying less than the full eight weeks, the fee is \$15.00 per week paid weekly in advance, but campers staying the full eight weeks will be granted a 5% reduction from the total camp fee.

Excellent accommodations for parents visiting their daughters in camp can be had in the rooms of the Association at very reasonable rates. Since our accommodations are seldom adequate to care for week-end guests, parents are urged to make reservations in ample time to prevent disappointment on arrival. Unless specifically requested, rooms are held in reserve no later than five o'clock on Saturday afternoon.

There is not a shadow of a doubt but that P.F.G. Camp offers to discriminating campers and parents the answer to the summer camp question.





## DAILY SCHEDULE

- 7.00 Reveille (morning dip optional)
- 7.25 Flag Raising and Morning Devotions.
- 7.45-8.30 Breakfast.
- 8.45-9.45 Bunk Duties—Special Duties.
- 10.00 to 12.00 Activities (Baseball, Nature Study, Arts & Crafts, Swimming, Dancing, Dramatics, Volley Ball, Tennis, etc.)
- 12.00 Mail.
- 12.15 Dinner
- 1 15 Library
- 2.00-3.00 Quiet Hour
- 3.00-3.45 Hobby Hour (Bible Study for Junior Camp on Mondays and for Senior Camp on Thursdays)
- 3.50-4.30 Swimming.
- 5.15 Supper.
- 6.15 Canteen.
- 7 15-7.45 Organized Games.
- 8.00 Evening Programs.
- 8.45 Vespers.
- 9.00 Taps.

## THINGS YOU WANT TO KNOW

**Location:** At Paradise Falls in the Paradise Valley of the Poconos on the reservation of the Paradise Falls Lutheran Association.

**Mailing Address:** Paradise Falls Girls' Camp, Paradise Falls, P. O. Cresco, Pa.

**Shipping Address:** P.F.G. Camp, Paradise Falls Lutheran Association, Cresco, Pa.

**Telephone:** Stroudsburg, Pa., 23R21

**Telegrams:** Paradise Falls, Stroudsburg, Pa.

### How to Get There:

**BY AUTO—From Philadelphia and New York City Via:** East Stroudsburg. The Milford Pike (1 mile to Route 190, to Route 90, then 10 miles straight through to Paradise Falls.

**From Scranton and Wilkes-Barre Via:** Mount Pocono. Route 90, 4 miles straight through to Paradise Falls.

**BY TRAIN—From New York City Via:** Lackawanna R. R. to East Stroudsburg.

**From Philadelphia Via:** Penna. R. R. to East Stroudsburg.

**BY BUS—Frequent service from Philadelphia and New York City to Bus terminals in Stroudsburg. D. L. & W., and P. R. R. Station, Greyhound and Pocono Bus terminal, East Stroudsburg.**

Paradise Falls busses will meet Railroad and Bus Terminals on call. Phone Stroudsburg 24R2.

**Size of Camp:** Limited to 75 campers.

**Age:** Junior Camp, 8 to 12 years inclusive; Senior Camp, 13-16 years inclusive.

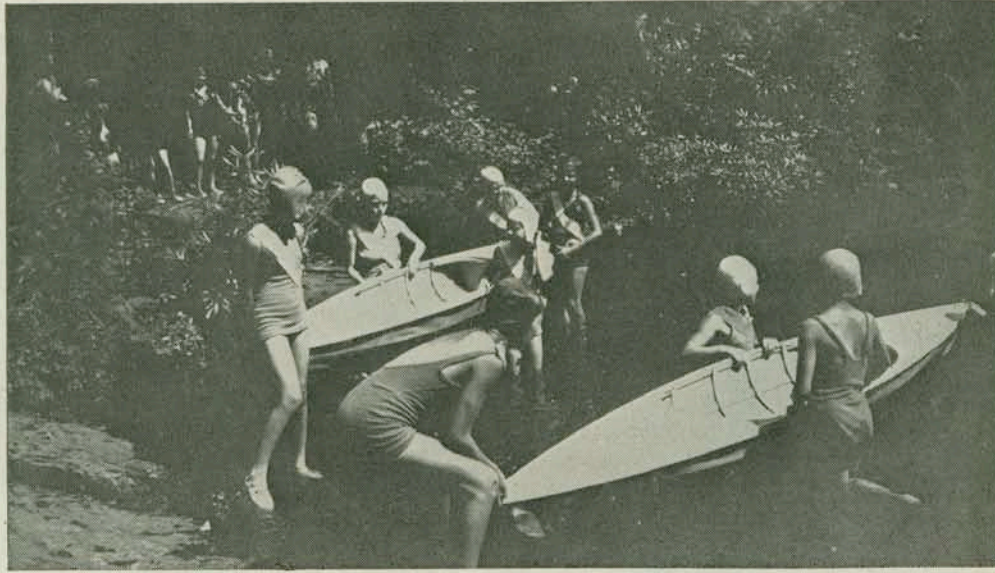
**Camping Period:** July 3 to August 28.

**Length of Stay:** Not less than two weeks. Advise at least one month.

**When to Arrive:** On Saturday if at all possible.







## THINGS YOU WANT TO KNOW

**What to Bring:** Consult the accompanying equipment list. Be sure to mark everything plainly. The Camp is not responsible for lost articles.

**Uniforms:** Worn on all occasions. Must be ordered through the camp office specifying size and number of uniforms desired. Check in full must accompany each uniform order, cost of uniform is \$1.75.

**Camp Fees:** \$15.00 per week. 5% reduction for entire season. No other reductions allowed. No refunds made for less than a week. This fee covers everything except horseback riding and special medical attention. \$2.00 fee must accompany your application. This will be credited to the first week's account.

**Spending:** No more than five cents per day for candy or ice cream. Special permission must be given to allow the purchase of souvenirs and gifts.

**Camp Bank:** No money allowed in bunks. All money must be deposited in the Camp bank. Failure to do this is considered ample grounds for expulsion from camp.

**Visiting Days:** Saturday afternoons and Sundays.

**Autos:** No camper is allowed to have an auto in camp. Counsellors only by special permission.

**Laundry:** Can be sent home or cared for by regular laundry service at camp at reasonable rates.

**Parents:** Accommodations for parents can be had in the restful rooms and the attractive dining room of the Association at moderate rates, but reservations must be made in advance.



# APPLICATION—PARADISE FALLS GIRLS' CAMP

Name .....

Street ..... City .....

Will arrive in camp.      June 28       July 26   
   July 26       Leave camp      Aug. 23

I attend ..... Church.

I was ..... years old on ..... 19 .....

Name of School .....

Grade in School ..... Height ..... Weight .....

The Association reserves the right to reject any application or to dismiss any girl for sufficient cause.

This application has my approval and consent. My daughter has my permission to go swimming and horseback riding.

.....  
Pastor      Parent or Guardian

.....  
Camper's Home Telephone      Business Address

.....  
Business Telephone

Applicants should fill out in full and send at once to the Paradise Falls Girls' Camp, Paradise Falls, Monroe County, Penna.

Camp fees are \$140.00 for four weeks — \$250.00 for eight weeks — \$200.00 for six weeks or \$75.00 for two weeks.

Registration fee of \$10.00 must accompany this application. This fee will be applied to the camp fees.

**Reservation assured only for time specified.**

**Make all checks payable to the Paradise Falls Girls' Camp**

Have you a friend, your own age group, with whom you prefer to be bunked, if possible? Name? .....

I learned of P. F. G. from .....

.....  
.....







# PARADISE FALLS GIRLS' CAMP

## Report of Physical Examination

(Examination to be made not more than five (5) days prior to admission to camp)

Date.....

Name.....

Age..... Weight..... Height.....

She has had the following diseases.....

Sequelae to above.....

Has she ever been given a serum in the form of an injection, skin test, inoculation or vaccination?..... Type..... Date.....

She has had the following operations: .....

She has at present the following clinical pathology in the Respiratory and Cardio-Vascular systems .....

Previous heat stroke? ..... Chronic Appendicitis?.....

Special Instructions .....

Restrictions in activities, exercises, diet.....



## EQUIPMENT LIST

A standard uniform in green and white is to be worn on all occasions.  
Further information in the accompanying folder.

Warm apparel is necessary for mornings and evenings.

Bring suitcases rather than trunks for convenience in storing.

### NECESSARY ARTICLES

#### I. PERSONAL EQUIPMENT

Playsuits	Slacks—Overalls
3 uniforms	Warm pajamas
2 dresses	Swimming suit (2)
1 heavy sweater or jacket	
1 light sweater or jacket	
Riding breeches	Bathing cap
Anklets	Rain coat and hat
Underclothes	Umbrella
Handkerchiefs	1 laundry bag
1 bathrobe	Sewing kit
Writing material	Flashlight
Bible	

#### II. FOOTWEAR

Bedroom slippers	Bathing shoes
2 pr shoes (minimum)	Rubbers or galoshes
Tennis shoes (rubber sole and heel)	

#### III. BEDDING EQUIPMENT

4 sheets	4 heavy blankets
2 pillow slips	1 pillow

#### IV TOILET ARTICLES

4 bath towels	Soap, tooth brush
4 wash cloths	Tooth paste, comb
	Nail file

#### DESIRABLE BUT NOT NECESSARY

Musical Instruments, Costumes, Tennis Racket and Balls, Camera.

HAVE NAME ON ALL BELONGINGS—SEE ENCLOSURE.

### CAMP UNIFORMS

To add to the distinctiveness of P. F. G. camping days the Camp Committee has adopted a standard one piece camp uniform in green and white, which is to be worn at all times, except on special occasions which will be designated by the Camp Director.

All uniforms must be ordered through the P. F. G. Camp office. Price of uniforms is \$4.00. To prevent disappointment, uniforms should be ordered at least one month before the camper expects to arrive in camp. A camper should have at least three uniforms.